



INSTRUCTIONS

J04236

2009-07-02



RIGHT SIDE TOOLBOX KIT

GENERAL

Kit Number

64227-08

Models

For model fitment information, see the P&A Retail Catalog or the Parts and Accessories section of www.harley-davidson.com (English only).

Additional Parts Required

For Models with Passenger Footrests: Separate purchase of a Hex Spacer Kit (49352-00) is required for proper installation of this kit. The Hex Spacer Kit is not required if this Toolbox Kit is installed on models with Passenger Footboard Kit (50602-00). These kits are available at a Harley-Davidson dealer.

NOTE

Lock mechanism accepts all Harley-Davidson barrel-style ignition keys.

Kit Contents

See Figure 1 and Table 1.

INSTALLATION

NOTE

Be careful not to scratch toolbox surface while performing this installation.

1. See Figure 1. Attach toolbox (1) to toolbox mounting bracket (3) using three pan head screws (4) and locknuts (5).
2. **For models with passenger footboards:**
 - a. See Figure 1. Remove screw that secures passenger footboard assembly to frame (E).
 - b. Remove footboard assembly. Refer to Passenger Footboard Kit (50602-00) for instructions. Note orientation of footboard for kit installation. Save parts for kit installation.
3. **For all 2008 models with passenger footrests:**
 - a. See Figure 1. Remove retaining ring (F), clevis pin (G), spring washer (H) and footrest (J).
 - b. Remove screw (K) that secures the footrest support (L) to the frame (E).

- c. Remove the screw and washer that secures the bottom of the splash guard to swingarm. Save all parts for kit installation.

4. Install toolbox mounting bracket as follows:

- a. Remove one of the fender support screws (A) and washers (B). Only remove one screw and washer.
- b. Install mounting bracket (3), one chrome washer (7) and one chrome screw (8) from the kit. Hand-tighten screw.
- c. Remove and discard the remaining original screw (A) and washer (B) from the fender support.
- d. Rotate the mounting bracket in-line with the remaining hole and install chrome washer (7) and chrome screw (8) from the kit. Hand-tighten screw.

NOTE

It may be necessary to move the splash guard aside to install the Hex Spacer Kit.

⚠ WARNING

Footrests must fold up and toward rear of motorcycle if struck. Failure to set footrests to fold up and back could result in death or serious injury. (00366a)

5. **For models with passenger footrests: For models with passenger footboards:**
 - a. See Figure 1. Install Hex Spacer Kit (49352-00) following instructions included with kit.
 - b. Install the footrest support (L) and the footrest (J) to the hex spacer (M).
 - c. Secure the splash guard to the swingarm with the previously removed screw and washer. Tighten screw to 4.1–5.4 N·m (36–48 in-lbs).
 - d. See Figure 1. Install the footboard assembly (from Kit 50602-00) to the toolbox mounting bracket (3) in same orientation prior to removal.
 - e. Install passenger footboard assembly screw and tighten to 47.5–61 N·m (35–45 ft-lbs).
6. Tighten both fender support screws (8) to 40.5–47.5 N·m (30–35 ft-lbs). Loosen one screw and tighten again to 52–57 N·m (38–42 ft-lbs). Repeat for the other screw.

NOTE

Maximum toolbox weight capacity is 5 lbs (2.25 Kg).

SERVICE PARTS

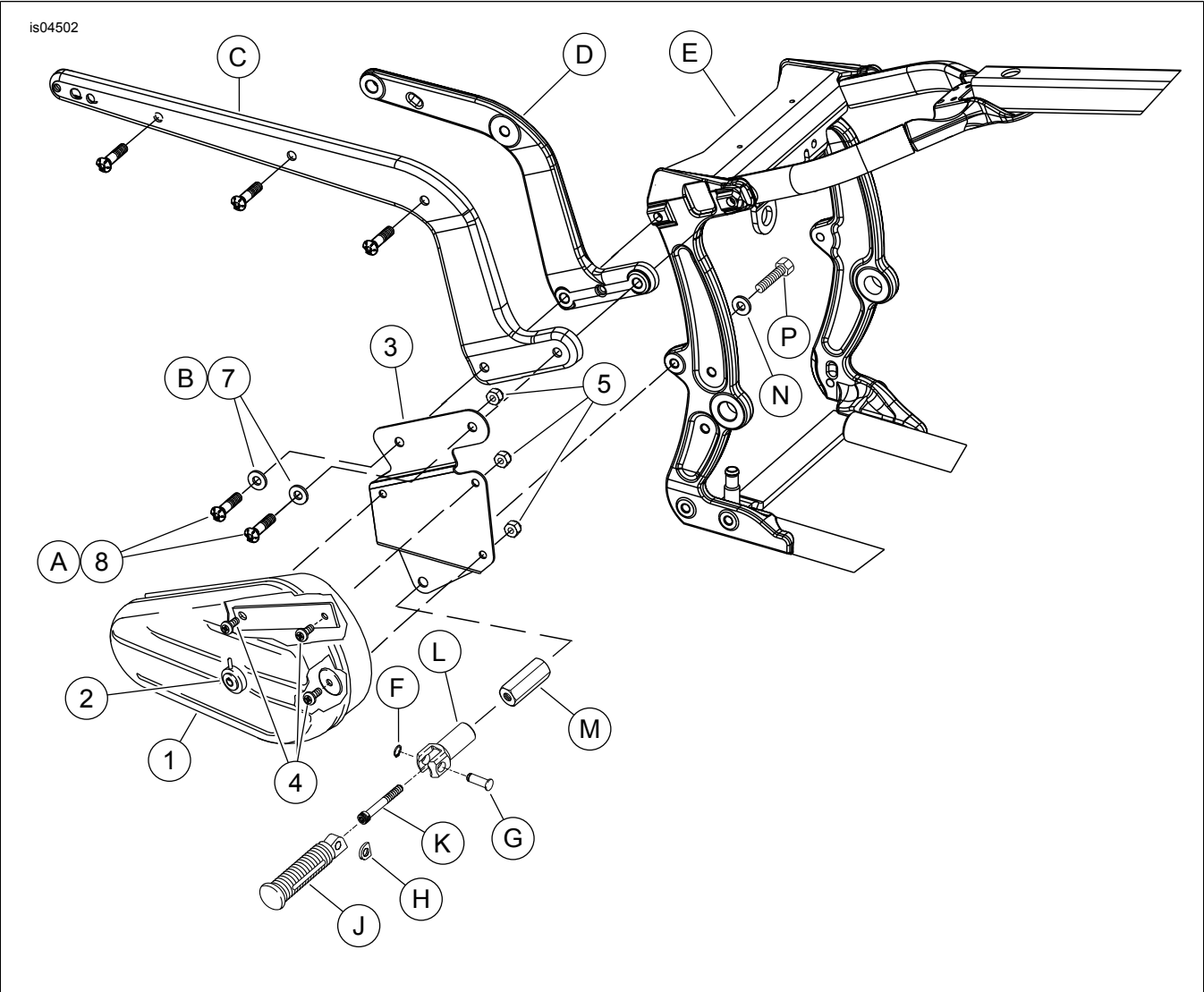


Figure 1. Service Parts: Right Side Toolbox Kit

Table 1. Service Parts: Right Side Toolbox Kit

Item	Description (Quantity)	Part Number	Item	Description (Quantity)	Part Number
1	Toolbox (includes item 2)	Not Sold Separately	E	Frame	
2	Lock, toolbox	45797-99	F	Ring, retaining	
3	Bracket, toolbox mounting	Not Sold Separately	G	Clevis pin	
4	Screw, pan head (3)	2774	H	Spring washer	
5	Locknut (3)	7686	J	Footrest	
6	Key (2), (not shown)	64204-96	K	Screw	
7	Chrome washer (2)	6595HB	L	Support, footrest	
8	Screw, button head, TORX® (2)	3086	M	Spacer, hex (included in Kit 49352-00 - purchased separately)	
Item mentioned in text, but not included in kit:			N	Washer (included in Kit 49352-00 - purchased separately)	
A	Screw, fender support (2)		P	Screw (included in Kit 49352-00 - purchased separately)	
B	Washer (2)				
C	Fender support cover				
D	Fender support				