



INSTRUCTIONS

J04647

2016-08-22



FOOTPEG KIT

GENERAL

Kit Number

51376-09, 50500435, 50500717

Models

For model fitment information, see the P&A Retail Catalog or the Parts and Accessories section of www.harley-davidson.com (English only).

⚠ WARNING

Footrests must fold up and toward rear of motorcycle if struck. Failure to set footrests to fold up and back could result in death or serious injury. (00366a)

Kit Contents

Table 1. Kit Contents

Description (Quantity)	Part Number
Assembly, footpeg (left)	Not Sold Separately
Assembly, footpeg (right)	Not Sold Separately
Clevis pin (2) (50500717)	50500501
Retaining ring (2) (50500717)	11304

INSTALLATION

1. See Figure 1. Remove screw (1) and locknut (2) from each footpeg. Save hardware.
2. Remove each footpeg with spring washer. Save spring washers.



3.

NOTE

Make sure the spring washer is positioned in the slot between the footpeg support and footpeg with the straight edge toward the inside of the support as shown.

Install new footpegs. Place spring washer (3) and footpeg in the slot of the footpeg support.

4. Secure footpeg with screw and locknut that was previously removed or clevis pin (1) and retaining ring (2) provided in kit (Part No. 50500717). **Tighten locknuts:**

Torque: 26 N·m (19 ft-lbs) *Locknuts*

5. See Figure 1. For each footpeg, loosen adjusting screw (4). Position footpeg as desired and tighten screw.

- a. **50500135 and 5050717:**

Torque: 20–24 N·m (15–18 ft-lbs) *Adjusting screw*

- b. **51379-09:**

Torque: 29 N·m (21 ft-lbs) *Adjusting screw*

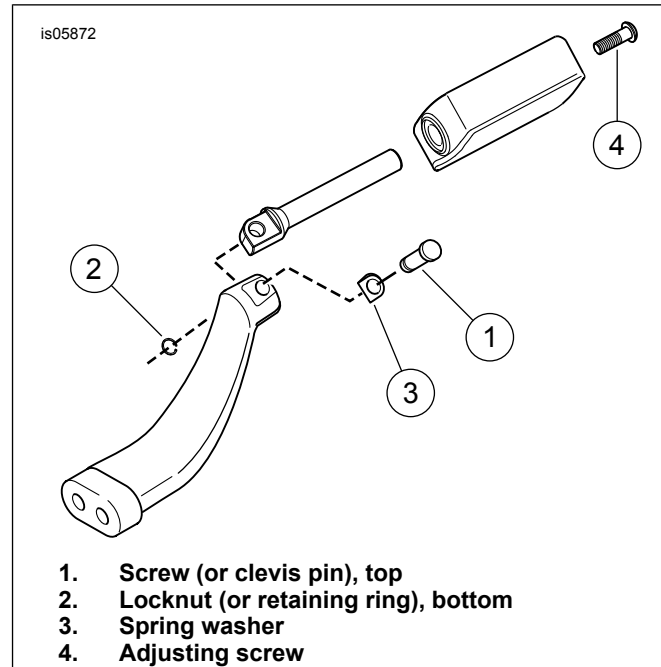


Figure 1. Installing the Footpeg