



# INSTRUCTIONS

J04527

2010-06-02



## DIRECTIONAL RELOCATION KIT

### GENERAL

#### Kit Number

53968-06C

#### Models

For model fitment information, see the P&A Retail Catalog or the Parts and Accessories section of [www.harley-davidson.com](http://www.harley-davidson.com) (English only).

#### Additional Parts and Tools Required

Separate purchase of LOCTITE® 243 Threadlocker and Sealant - Blue (99642-97) is required for proper installation of this kit. LOCTITE can be purchased from any Harley-Davidson Dealer.

Separate purchase of crimping tool (HD-38125-8 or equivalent) is required for proper installation of this kit.

UltraTorch UT-100 (HD-39969) Heat Gun (HD-25070) with Heatshrink Attachment (HD-41183) or other suitable radiant heating device is required for proper installation of this kit.

#### ⚠ WARNING

Rider and passenger safety depend upon the correct installation of this kit. Use the appropriate service manual procedures. If the procedure is not within your capabilities or you do not have the correct tools, have a Harley-Davidson dealer perform the installation. Improper installation of this kit could result in death or serious injury. (00333b)

#### NOTE

This instruction sheet references service manual information. A service manual for your model motorcycle is required for this installation and is available from a Harley-Davidson Dealer.

#### Kit Contents

See Figure 3 and Table 1.

#### REMOVAL

#### ⚠ WARNING

To prevent accidental vehicle start-up, which could cause death or serious injury, disconnect negative (-) battery cable before proceeding. (00048a)

1. Disconnect the negative (-) battery cable.
2. See Figure 1. Remove lens (8) from rear turn signal housing (4). Remove bulb (7) from the socket of reflector (6).

3. Trace the turn signal wires along the underside of the rear fender. Cut the wires 3-6 inches (7.6-15.2 cm) past the internal fender clip.

#### NOTE

The wires must be cut to allow them to fit through the new turn signal stalk. They will be spliced back together later in the installation. It may be necessary to pull back the protective wire sheath to allow splicing.

4. Carefully pry the socket (6) and grommet (5) from the housing. Gently pull the wires from the housing and slide the conduit off the wires. Discard the conduit.
5. Remove and discard the bolt (1) and lockwasher (2) that secure the turn signal housing and support (3) to the fender.

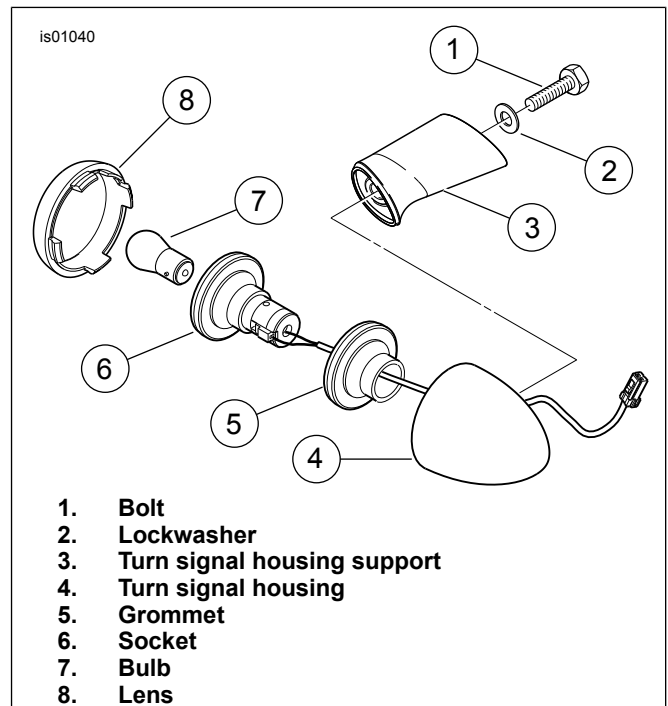


Figure 1. Stock Turn Signal Removal

#### INSTALLATION

#### Installing the Turn Signal Stalk and Rear Docking Point

1. See Figure 3. Place the rear docking point (E) and recess cover (D) over the long threaded end of the new turn signal stalk (4) with the countersunk side of docking point facing outward.



2. Insert the turn signal stalk (4) through the rear mounting hole in the fender support and fender. Apply Loctite® 243 (blue) to the stalk and thread into fender mounting bracket.
3. Tighten the stalk to 16.3–24.4 N·m (12–18 ft-lbs).
4. Loosely install a jam nut (3) and a lockwasher (2) onto the short threaded end of the turn signal stalk (4).
5. Place the recess cover (1) into position over the recess on the turn signal housing. Insert the wires from the socket through the grommet into the turn signal housing, through the threaded hole and the recess cover, and into the turn signal stalk (4).

**NOTE**

Apply a drop of liquid soap to the wires to ease insertion through the stalk or use a thin wire to pull the wires through.

6. Route the wires through the turn signal stalk (4) until they are through the fender.
7. Install the turn signal housing onto the stud. Be careful that the wires are not twisted or damaged as the stalk and housing are assembled. The lockwasher will fit inside the hole in the recess cover. Hand-tighten the jam nut against the lockwasher.
8. While pulling the turn signal wires into the inside of the fender, guide the turn signal socket and grommet into the housing.
9. Align the rear turn signal housing so that when the lens is installed it is aimed rearward for proper visibility. While holding the turn signal housing in position, tighten the jam nut against the lockwasher to 10.8–13.6 N·m (8–10 ft-lbs).

### Connecting the Turn Signal Wires

1. Strip a 3/8 inch (9.5 mm) section of insulation from the ends of the four turn signal wires underneath the fender.

**NOTE**

Be sure to match the wire colors before splicing.

The number of turn signal wires varies depending on the vehicle model. Not all models require all the wire connectors provided in this kit.

2. See Figure 2. Insert the black turn signal wires into opposite ends of sealed splice connectors. Insert the violet/brown wires into opposite ends of the other sealed splice connectors.
3. Match the color of the sealed splice connector with the color of the crimp cavity of the crimping tool. Crimp the wires into the connector.
4. Repeat all the above procedures for the opposite side.

**▲ WARNING**

Be sure to follow manufacturer's instructions when using the UltraTorch UT-100 or any other radiant heating device. Failure to follow manufacturer's instructions can cause a fire, which could result in death or serious injury. (00335a)

- Avoid directing heat toward any fuel system component. Extreme heat can cause fuel ignition/explosion resulting in death or serious injury.
  - Avoid directing heat toward any electrical system component other than the connectors on which heat shrink work is being performed.
  - Always keep hands away from tool tip area and heat shrink attachment.
5. Using the UltraTorch Heat Gun with Heatshrink Attachment, or other suitable radiant heating device, heat the crimped splice to encapsulate the sealed splice connection. Apply heat from the center of the crimp out to each end until the meltable sealant comes out of both ends of the connector.
  6. See Figure 1. Install the left side turn signal bulbs (7) into the sockets (6). Install the lenses (8) in the left side turn signal housings (4).
  7. Repeat previous step for the right side turn signals.
  8. See Figure 3. Remove adhesive backing from reflector (6) and center the reflector along the bottom edge of sideplate. Apply reflector and hold in position for 30 seconds. Repeat for other sideplate.

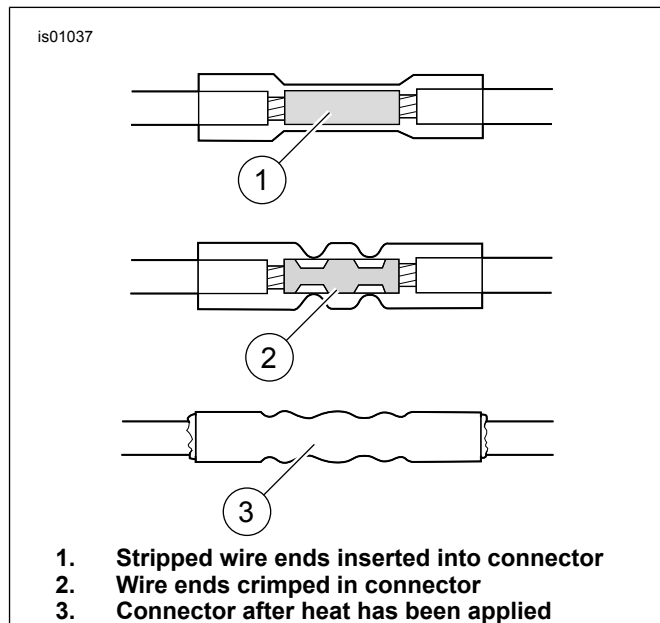


Figure 2. Sealed Splice Connections

### Final Assembly

**▲ WARNING**

After installing seat, pull upward on seat to be sure it is locked in position. While riding, a loose seat can shift causing loss of control, which could result in death or serious injury. (00070b)

**▲ WARNING**

Be sure that all lights and switches operate properly before operating motorcycle. Low visibility of rider can result in death or serious injury. (00316a)

1. Connect the battery cable, then install the seat and check the turn signals for proper operation.

## Maintenance

In time, the docking points may wear causing the mating luggage rack or sideplates to become loose. The fit may be tightened using the following procedure:

1. Loosen the docking hardware.

2. Rotate the docking points clockwise approximately 45°.
3. Tighten the docking hardware to the appropriate torque values as indicated in the installation procedures.

This procedure can be repeated up to three times before replacement of the docking points is recommended.

## SERVICE PARTS

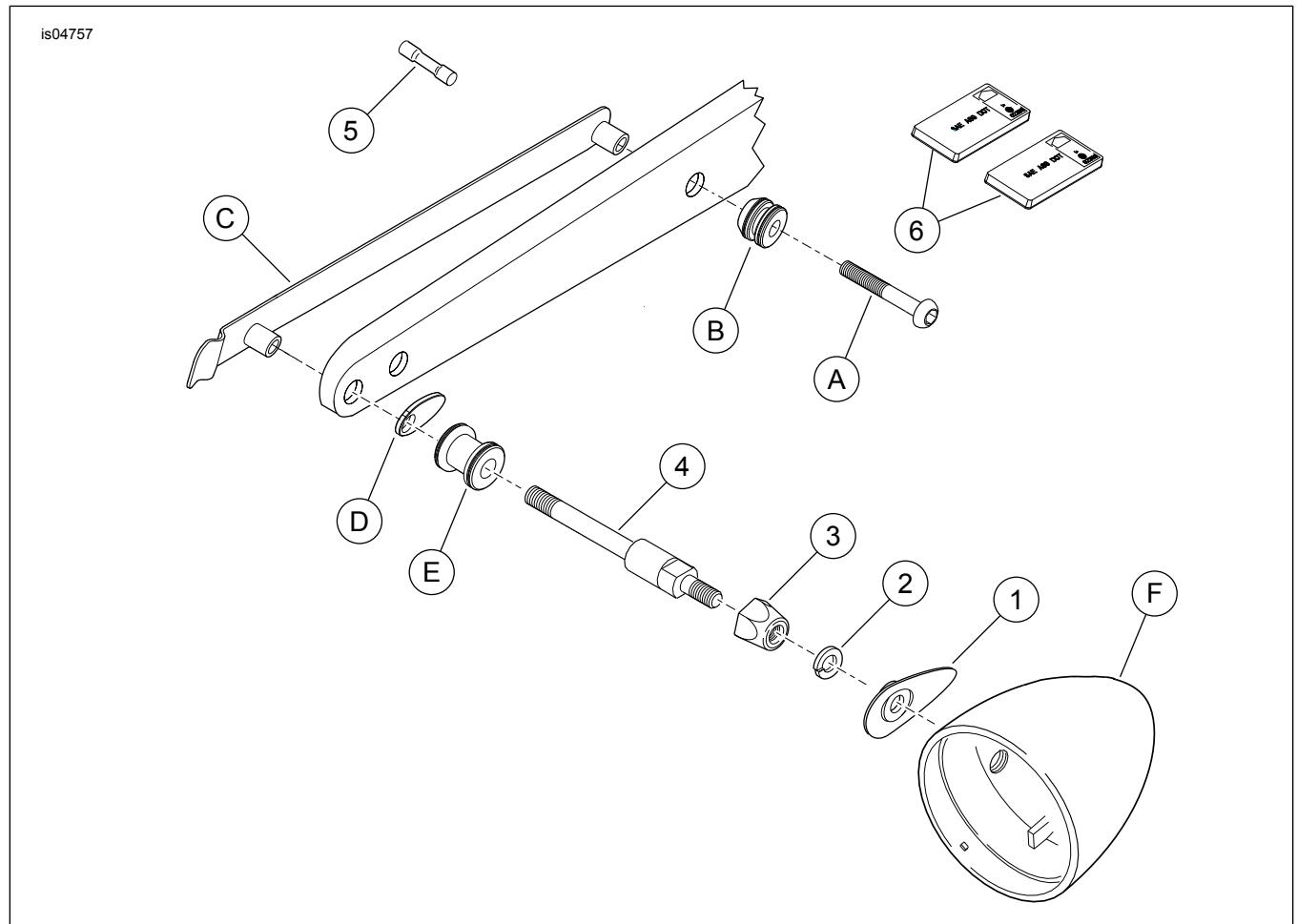


Figure 3. Service Parts: FXD Directional Relocation Kit

Table 1. Service Parts: FXD Directional Relocation Kit

| Item   | Description (Quantity)                    | Part Number |
|--|---|-------------|
| 1  | Recess cover, turn signal (2)             | 68028-03    |
| 2  | Lockwasher, helical spring, 5/16 inch (2) | 7042        |
| 3  | Jam nut, turn signal stalk (2)            | 68991-02    |
| 4  | Stalk, turn signal (2)                    | 68664-06A   |
| 5  | Wire connector, sealed splice (6)         | 70585-93    |
| 6  | Reflector, red (2)                        | 59266-09    |
| <b>Items shown, but not included in kit:</b> |   |             |
| A  | Bolt, button head                         |             |
| B  | Docking point, front                      |             |
| C  | Backing plate                             |             |
| D  | Recess cover                              |             |
| E  | Docking point, rear                       |             |
| F  | Turn signal housing                       |             |