



# INSTRUCTIONS

J04651

2008-09-10



## SIGNATURE SERIES SOLO SEAT KIT

### GENERAL

#### Kit Number

51700-09

#### Models

For model fitment information, see the P&A Retail Catalog or the Parts and Accessories section of [www.harley-davidson.com](http://www.harley-davidson.com) (English only).

#### Additional Parts Required

##### ⚠ WARNING

Rider and passenger safety depend upon the correct installation of this kit. Use the appropriate service manual procedures. If the procedure is not within your capabilities or you do not have the correct tools, have a Harley-Davidson dealer perform the installation. Improper installation of this kit could result in death or serious injury. (00333b)

##### NOTE

This instruction sheet references service manual information. A service manual for your model motorcycle is required for this installation and is available from a Harley-Davidson dealer.

#### Kit Contents

See Figure 4 and Table 1.

### REMOVAL

##### NOTE

Refer to owner's manual or service manual for seat removal instructions for your model.

1. Remove right and left saddlebags according to the instructions in the service manual. Save saddlebag mounting brackets and hardware.
2. Remove passenger seat strap. Discard passenger seat strap.
3. Remove existing seat from vehicle.
4. See Figure 1. Remove and discard stock nuts (2) from studs (1) on rear fender (3).

### INSTALLATION

#### Install Rider Seat

1. Push front seat on frame with mounting bracket at rear.
2. Firmly push front of seat downward and rearward until frame tongue engages slot in seat.

3. Push seat forward until studs are centered in slots of mounting bracket.
4. See Figure 4. Install two nuts (4) on studs to secure rear seat mounting bracket to rear fender. Alternately tighten nuts to 60-96 **in-lbs** (6.8-10.9 Nm).
5. If installing a new passenger seat, refer to the instructions included with the kit.

##### ⚠ WARNING

After installing seat, pull upward on seat to be sure it is locked in position. While riding, a loose seat can shift causing loss of control, which could result in death or serious injury. (00070b)

6. If installing passenger seat, install passenger seat strap following the instructions in the service manual.
7. Install right and left side saddlebags following the instructions in the service manual.

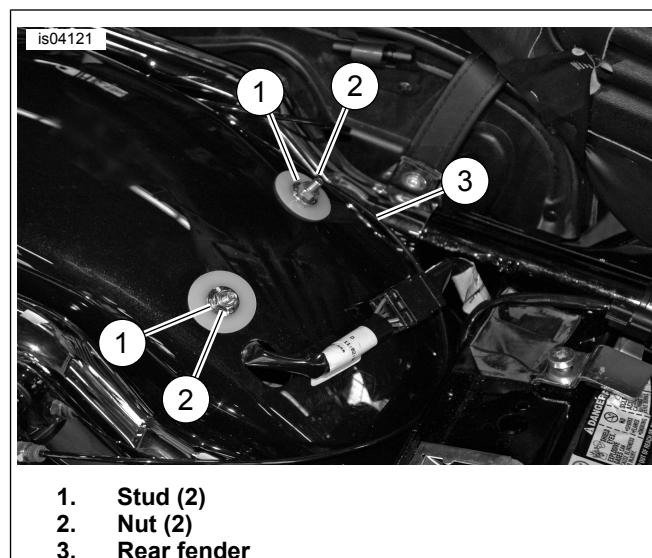


Figure 1. Rear Fender

#### Install Rider Backrest

##### NOTE

Flaps shown removed for clarity of illustration.

1. See Figure 2. Turn backrest assembly (1) at a 45 degree angle clockwise to the seat. Slide the backrest shaft (2) through the flaps and into the receptacle in the seat.

2. While pushing down on the backrest assembly, twist the backrest counterclockwise until the shaft hits the stop.
3. Verify that the backrest assembly is locked in place by pulling up in the backrest pad.

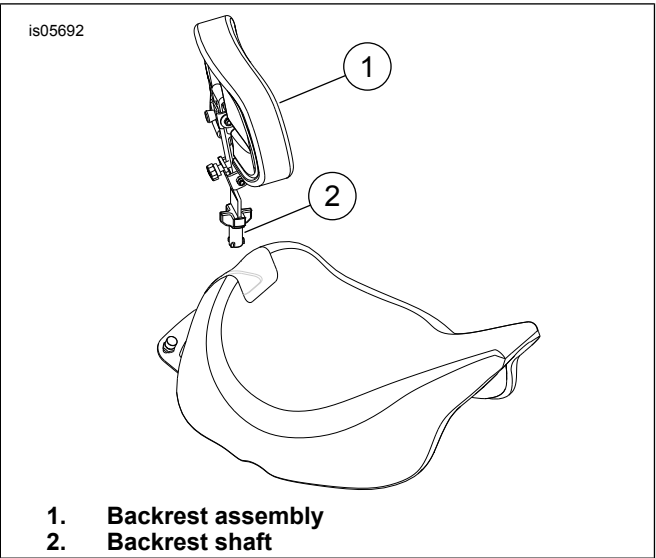


Figure 2. Install Rider Backrest

## Rider Backrest Adjustments

### NOTE

Adjust the to rider backrest before returning motorcycle to use.

## SERVICE PARTS

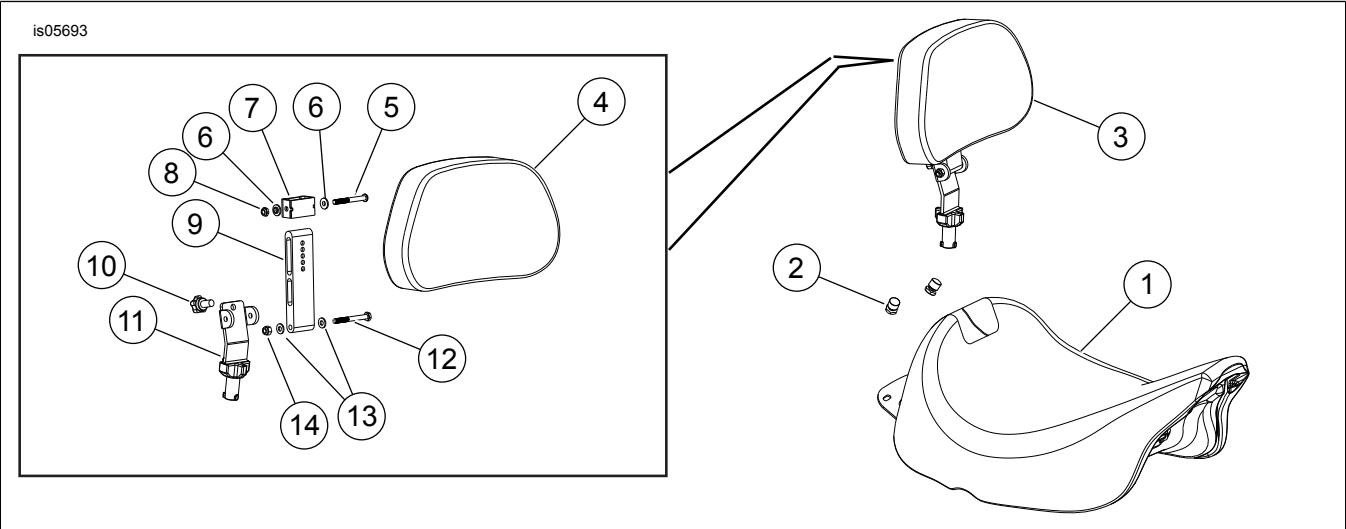


Figure 4. Service Parts: Signature Seat with Adjustable Rider Backrest

Table 1. Service Parts: Seat with Adjustable Rider Backrest

Item	Description (Quantity)	Part Number
1	Seat	Not Sold Separately
2	Nut, seat mounting (2)	3638
3	Adjustable Rider Backrest Kit (includes Items 4 through 14)	51713-09
4	Rider backrest pad	Not Sold Separately
5	Screw, button head	Not Sold Separately
6	Bushing, nylon (2)	Not Sold Separately
7	Slider with adjustment knob	51772-09
8	Locknut, nylon insert	Not Sold Separately

1. See Figure 3. Lift flap at rear of backrest and pull out slider knob (1) to adjust the backrest up or down.
2. Turn the fore/aft knob (2) at rear of backrest clockwise to adjust the backrest forward or counterclockwise to adjust backward.

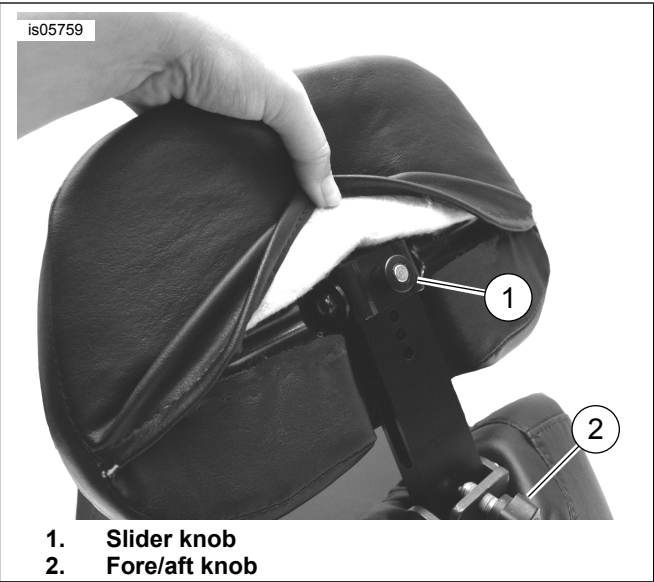


Figure 3. Adjust Rider Backrest

**Table 1. Service Parts: Seat with Adjustable Rider Backrest**

<b>Item</b>	<b>Description (Quantity)</b>	<b>Part Number</b>
9	Bracket, backrest adjustment	Not Sold Separately
10	Knob, threaded adjustment	51868-06A
11	Backrest shaft	Not Sold Separately
12	Screw	Not Sold Separately
13	Washer, nylon (2)	Not Sold Separately
14	Locknut, nylon	Not Sold Separately
15	Hardware kit (includes item 5, 6, 8, 12, 13 and 14) (not shown)	51748-09