



INSTRUCTIONS

J04653

2024-01-02



TRIKE CHROME REAR GUARD KIT

GENERAL

Kit Number

83825-09B, 83825-09C

Models

For model fitment information, see the P&A Retail Catalog or the Parts and Accessories section of www.harley-davidson.com (English only).

Tools and Supplies Required

Separate purchase of Loctite® 243 Threadlocker and Sealant - Blue (H-D Part Number 99642-97) is required for the proper installation of this kit.

The help of an assistant may be necessary when installing this kit.

Kit Contents

See Figure 1 and Table 1.

INSTALLATION

1. Set the vehicle parking brake, open the trunk door and remove the trunk liners.
2. See Figure 1. Locate four screws with washers (A) in the floor of the trunk compartment that hold the body to the rear frame. Leaving the washer in place, remove one of the screws. Save screw for step 3, then discard.
3. See Figure 1. Apply a small amount of threadlocker to screw (3).
Consumable: LOCTITE 243 MEDIUM STRENGTH THREADLOCKER AND SEALANT (BLUE) (99642-97)
 - a. Compare the length of the original equipment screw (D) to screw (3).
 - b. Mark the length of the original equipment screw (C) onto screw (3).
 - c. Apply threadlocker to threads of screws.
LOCTITE 243 MEDIUM STRENGTH
THREADLOCKER AND SEALANT (BLUE)
(99642-97)
4. Insert the screw through the washer (A) and trunk floor. Install it all the way through the U-channel on the outboard side of the rear frame (B). Do not fully tighten.
5. Repeat for the remaining three screws.
6. Tighten all four screws.
Torque: 24.4 N·m (18 ft-lbs) *Hex head cap screw*
7. With an assistant, position the rear guard assembly to the underside of the frame, fitting the four slots in the rail mounting brackets onto the threads of the screws installed in Step 4.
8. Install a washer (5) and locknut (4) to the threads of each screw to hold the rail in place. Tighten only enough so the rail lightly contacts the frame.
9. Align the rear guard evenly to the contour of the lower body for best appearance, and adjust the position of the rail to provide clearance between the rail and the rear of the vehicle body.
10. With an assistant firmly holding the screw heads inside the trunk to keep them from turning, tighten the four locknuts.
Torque: 24.4 N·m (18 ft-lbs) *Hex locknut*



SERVICE PARTS

is05371b

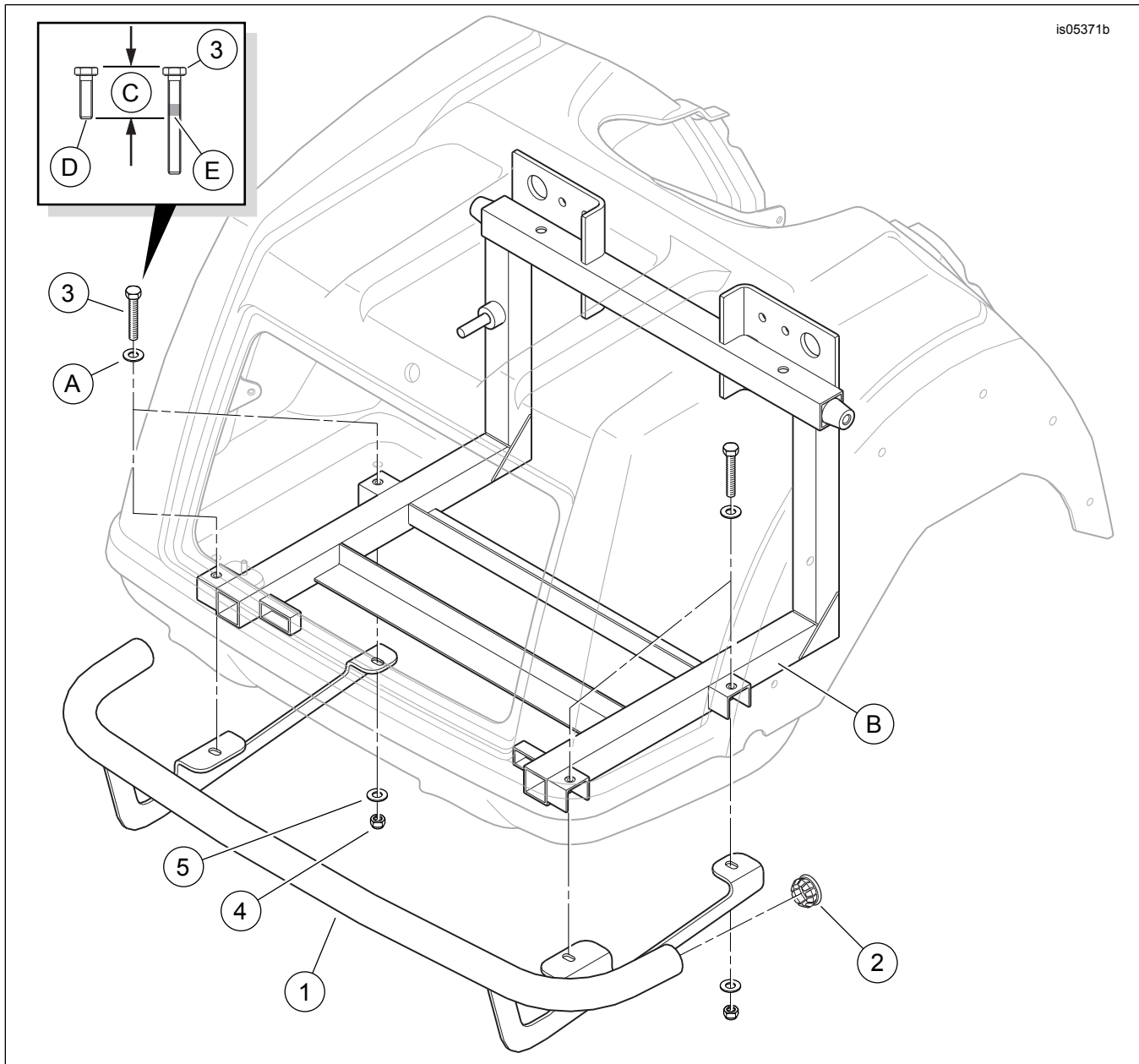


Figure 1. Service Parts: Trike Chrome Rear Guard Kit

Table 1. Service Parts Table

Item	Description (Quantity)	Part Number
1	Rear guard	Not sold separately
2	Insert, rear guard end, chrome plated steel (2) (used on 83825-09B)	83912-09
2	Insert, rear guard end, chrome plated plastic (2) (used on 83825-09C)	49000075
3	Hex head cap screw, 5/16-18 x 3.25 in (4)	10500002
4	Hex locknut, 5/16-18, with nylon insert (4)	7739
5	Plain washer (4)	6645
Items mentioned in text, but not included in kit:		
A	Original equipment washer (4)	
B	Rear frame assembly	
C	Length of original equipment screw	
D	Original equipment screw	
E	Apply Loctite - Blue to the screw (Item 3)	