



# INSTRUCTIONS

J04036

2006-01-26



## MOLDED GLOVE BOX LINER KIT

### GENERAL

#### Kit Number

58714-06

#### Models

This kit fits models equipped with vented fairing lowers.

#### Kit Contents

Table 1. Kit Contents

Description (Quantity)	Part Number
Glove box liner, R.H.	Not Sold Separately
Glove box liner, L.H.	Not Sold Separately

There are no Service Parts available with this kit.

### INSTALLATION

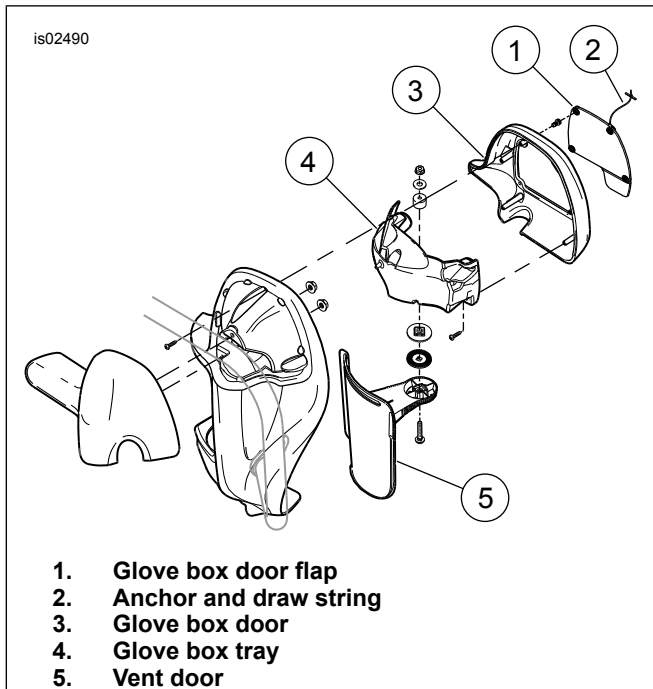


Figure 1. Lower Fairing Assembly



Figure 2. Glove Box (left side shown)

#### NOTE

The molded glove box liners are labeled (Left and Right) for easier identification.

- See Figure 3. Unfasten snaps to release glove box door flap.
- Release anchor on draw string from hole in glove box door. Set door flap aside.
- Wash the inside of the glove box with warm, soapy water. Rinse and dry thoroughly.

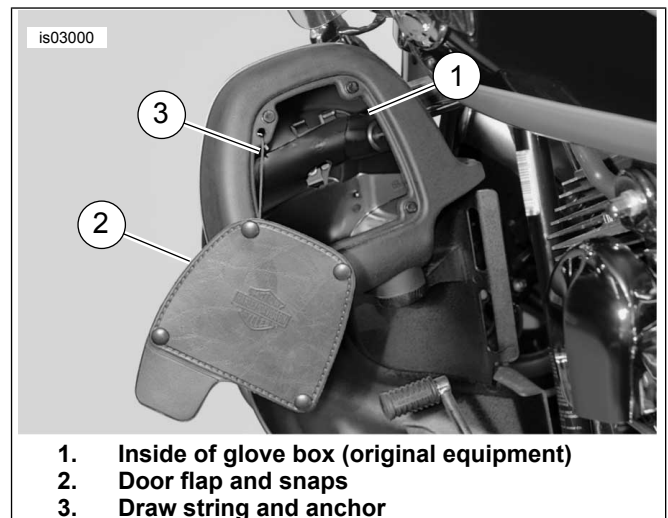
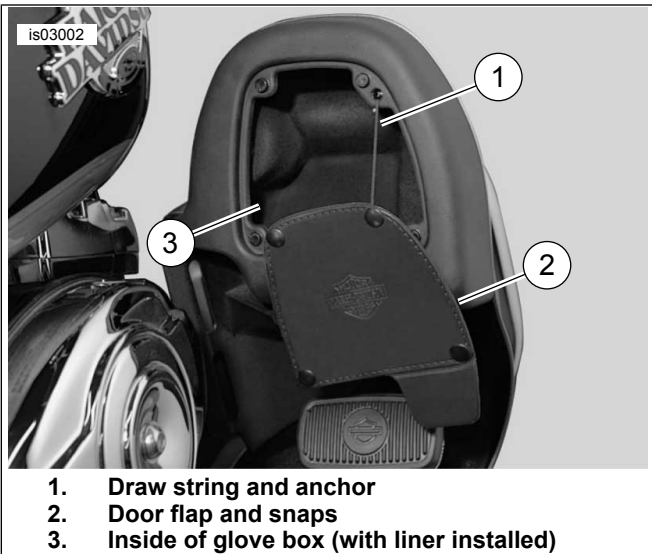


Figure 3. Remove Glove Box Door Flap



**Figure 4. Install Liner into Glove Box (right side shown)**

4. See Figure 4. Compress liner with fingers and press into glove box.
5. Apply pressure on liner surfaces until it fits snugly inside glove box.
6. See Figure 5. Install anchor and draw string of glove box door flap into hole in glove box door.
7. Fasten snaps to install glove box door flap.
8. Repeat for molded glove box liner on opposite side.



1. Draw string and anchor
2. Door flap and snaps
3. Inside of glove box (with liner installed)

**Figure 5. Install Glove Box Door Flap**