



# INSTRUCTIONS

J04655

2009-04-06



## CHROME SADDLEBAG SUPPORT KIT

### GENERAL

#### Kit Number

90881-09A

#### Models

For model fitment information, see the P&A Retail Catalog or the Parts and Accessories section of [www.harley-davidson.com](http://www.harley-davidson.com) (English only).

#### Additional Parts Required

##### ⚠ WARNING

Rider and passenger safety depend upon the correct installation of this kit. Use the appropriate service manual procedures. If the procedure is not within your capabilities or you do not have the correct tools, have a Harley-Davidson dealer perform the installation. Improper installation of this kit could result in death or serious injury. (00333b)

##### NOTE

This instruction sheet references service manual information. A service manual for your model motorcycle is required for this installation and is available from a Harley-Davidson Dealer.

#### Kit Contents

See Figure 1 and Table 1.

#### REMOVAL

1. Remove saddlebags from motorcycle following the instructions in the service manual.
2. See Figure 1. Remove grab strap screw and washer (G). Remove grab strap (H). Remove seat following the instructions in the service manual.
3. Remove left and right side covers (located in front of saddlebags) by removing screw from bottom of side cover. Save hardware and side covers for final assembly.
4. Support muffler assembly with a block of wood or other suitable method. Remove and save muffler support screws (F).

#### For FLHTCU and FLHTC Models

1. Remove and discard screws (X) and guard rail mounts (W and V).
2. Remove screw (Q) and rear guards (U). Discard rear guard assembly including screws (T) and clamps (R and S). Discard screw (Q).
3. Remove and discard screw (K) and nut (L).

4. Remove screws (B, N and C) and nut (E). Save screws (B and C) for installation. Discard nut (E), screw (N) and forward guard.
5. Remove stud receptacle (I) and save for installation.
6. Repeat Steps 1 through 5 for other side.

#### For All Other Models

1. Remove screws (B, N and C) and nut (E). Save screws (B and C) for installation. Discard nut (E) and screw (N).
2. Remove and discard screw (K) and nut (L).
3. Remove forward guard (D) and discard.
4. Remove support (J) and discard.
5. Remove stud receptacle (I). Save for installation.
6. Repeat for other side.

#### INSTALLATION

1. See Figure 1. Install bolt (M) and nut (3). Tighten finger-tight.
2. Install stud receptacle (I) into saddlebag guard.
3. Install saddlebag guard (1 or 2) with upper bolt (N) and lower bolt (C) with nut (4). Tighten finger-tight.
4. Install rear saddlebag support mounting screw (B) through air suspension bracket (A) and saddlebag guard (1 or 2). Tighten finger-tight.
5. Tighten the lower screw (C) and nut (4) to 43–49 N·m (32–36 ft-lbs).
6. Tighten the rear saddlebag support mounting screw (B) to 20–27 N·m (15–20 ft-lbs).
7. Tighten fender bracket screw (M) and nut (3) to 20–27 N·m (15–20 ft-lbs).
8. Install muffler with screws (F) and remove wooden support. Tighten screws to 10.8–16.3 N·m (96–144 in-lbs).
9. Repeat all steps for opposite side of vehicle.
10. Install seat and grab strap (H). Tighten grab strap screw (G) to 16.3–20.3 N·m (12–15 ft-lbs).
11. Install left and right side covers with original hardware.

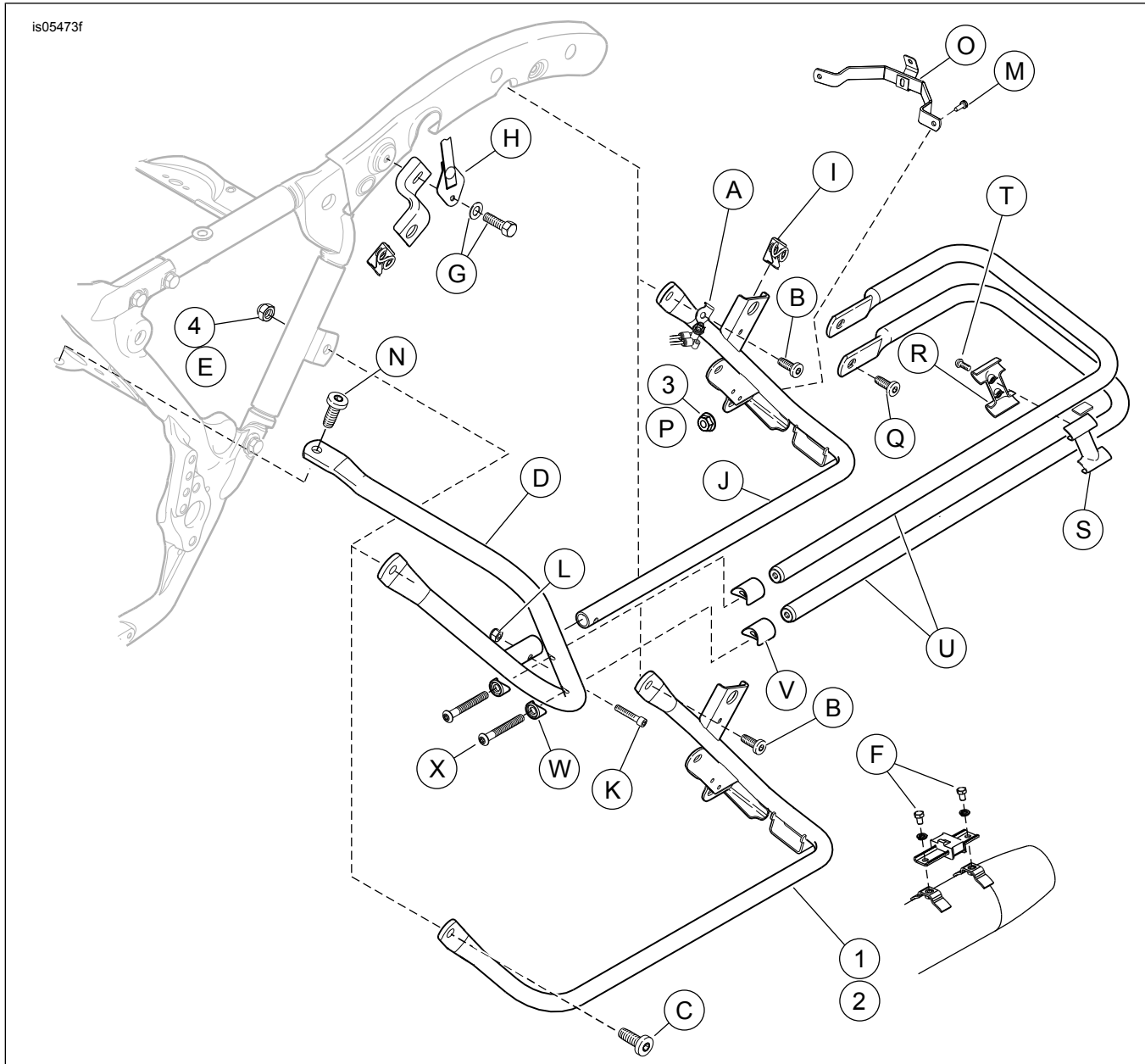


**▲ WARNING**

If Equipped: Front and/or rear guards are not intended to provide protection from bodily injury in a collision with another vehicle or any other object. (00022d)

12. Install saddlebags with the original hardware following the instructions in the service manual.

**SERVICE PARTS**



**Figure 1. Service Parts: Saddlebag Support Kit**

**Table 1. Service Parts Table**

Item	Description (Quantity)	Part Number
1	Forward guard, left	49206-09
2	Forward guard, right	49207-09
3	Locknut	7531
4	Locknut	7601
<b>Items mentioned in text, but not included in kit:</b>		
A	Air suspension mounting bracket	
B	Rear saddlebag support mounting screw	
C	Lower saddlebag guard screw	
D	Saddlebag support	
E	Lower saddlebag guard nut	

**Table 1. Service Parts Table**

<b>Item</b>	<b>Description (Quantity)</b>	<b>Part Number</b>
F	Muffler screw (2)	
G	Grab strap mounting hardware	
H	Grab strap	
I	Stud receptacle	
J	Saddlebag support	
K	Stock screw	
L	Stock nut	
M	Stock screw	
N	Stock screw	
O	Stock fender bracket	
P	Nut	
Q	Screw, 0.312-18 x 0.63 inch (4)	
R	Inner clamp (2)	
S	Outer clamp (2)	
T	Screw, #10-24 x 0.50 inch TORX (4)	
U	Rear guard (4)	
V	Guard rail mounts, rear (4)	
W	Guard rail mounts, front (4)	
X	Screw, hex cap (4)	