



INSTRUCTIONS

J04430

2009-06-17



SCREAMIN' EAGLE PRO SUPER BORE 51MM CV CARBURETOR MANIFOLD KIT

GENERAL

Kit Number

29414-07

Models

For model fitment information, see the P&A Retail Catalog or the Parts and Accessories section of www.harley-davidson.com (English only).

NOTE

This Screamin' Eagle performance intake manifold kit is intended for high performance applications only.

This manifold has intake runners which are 0.100" larger in diameter than all stock Twin Cam heads and early Screamin' Eagle performance cylinder heads. The intake port diameter in the cylinder heads should be 1.750". If not, an experienced engine builder can open the cylinder head ports to this diameter to be sure of a smooth transition and air-flow.

Additionally, the larger intake flanges supplied in this kit will only work with cylinder heads machined for use with the stock symmetrical intake flanges (OE since MY06).

All Screamin' Eagle performance cylinder heads (except Kompressor) with kit p/n extension of -06 or later have a intake port diameter of 1.750" and are machined for use with symmetrical intake flanges.

This engine related performance part is not legal for use on pollution controlled motor vehicles. This kit may reduce or void the Limited Vehicle Warranty coverage. Engine related performance parts are intended for the experienced rider only.

⚠ WARNING

Rider and passenger safety depend upon the correct installation of this kit. Use the appropriate service manual procedures. If the procedure is not within your capabilities or you do not have the correct tools, have a Harley-Davidson dealer perform the installation. Improper installation of this kit could result in death or serious injury. (00333b)

NOTE

This instruction sheet references service manual information. A service manual for your model motorcycle is required for this installation and is available from a Harley-Davidson Dealer.

Kit Contents

See Figure 3 and Table 1.

INSTALLATION

1. Remove air cleaner, carburetor, and manifold according to service manual instructions.
2. If vehicle is equipped with electronic ignition and a map sensor, install map sensor to performance intake manifold.
3. If vehicle is equipped with electronic ignition and a vacuum-operated electric switch (VOES), connect vacuum line to fitting on carburetor.

NOTE

If your motorcycle is VOES equipped, and you do not install the vacuum line to the VOES, you can expect poor midrange performance and reduced fuel economy.

The flanges are symmetrical and can be used on either intake of the manifold.

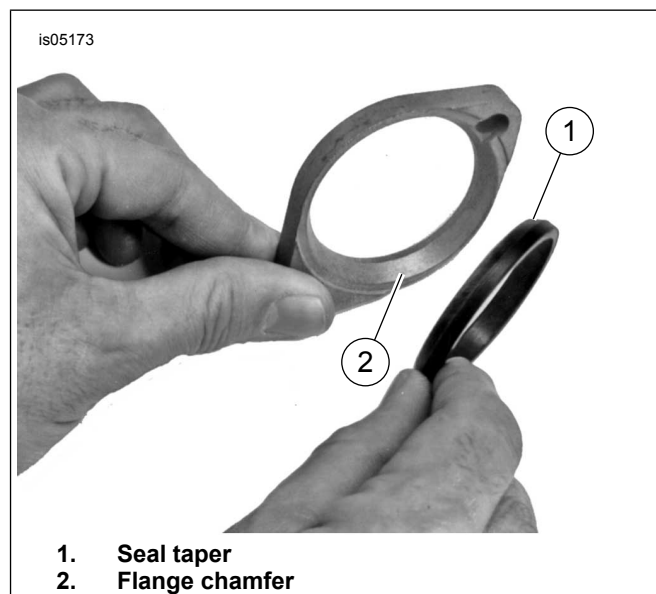


Figure 1. Assemble Tapered Seal to Flange Chamfer

4. See Figure 1. The flanges (2) have a chamfer and the seals (1) are tapered to fit into the chamfer. Place the flanges on the manifold so the chamfer faces outward. Install intake seals.

NOTE

The slotted bolt holes of the manifold flanges are positioned to the bottom bolt holes of the cylinder head intake ports.

5. See Figure 2. Install manifold seal ring (2).



6. See Figure 3 and Table 1. Position the manifold assembly to the intake ports of the cylinder heads. Install the socket head screws (5). Do not tighten at this time.
7. Install the carburetor and air cleaner. Refer to the Instruction Sheet included with the Carburetor and Air Cleaner Kit, Support Bracket/Adapter Kit or applicable service manual.
8. Tighten all screws to specifications in service manual.

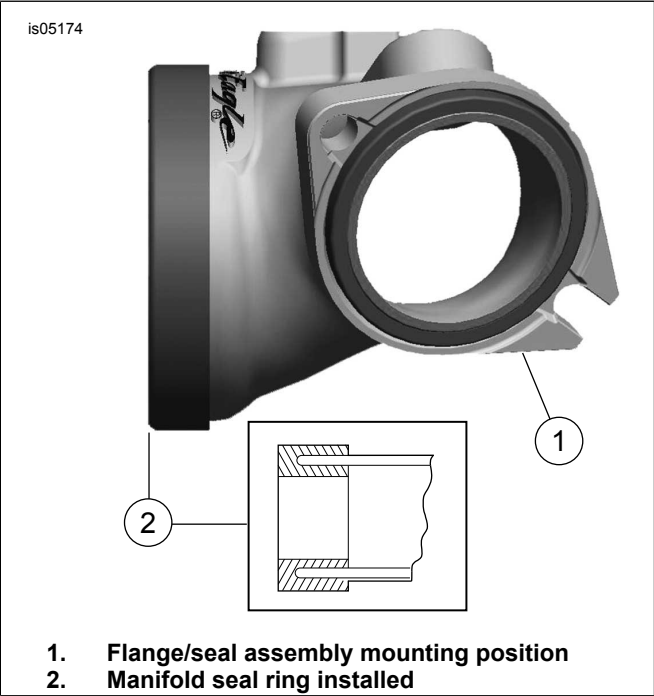


Figure 2. Manifold Seal Ring and Flange/Seal Assembly

SERVICE PARTS

Table 1. Service Parts Table

Item	Description (Quantity)	Part Number
1	Manifold intake seal, 44mm (2)	27035-05
2	Manifold mounting flange, symmetric, 44mm	27059-05A
3	Intake manifold	Not Sold Separately
4	Manifold seal ring	29230-07
5	Hex socket head cap screw (4)	3201WA

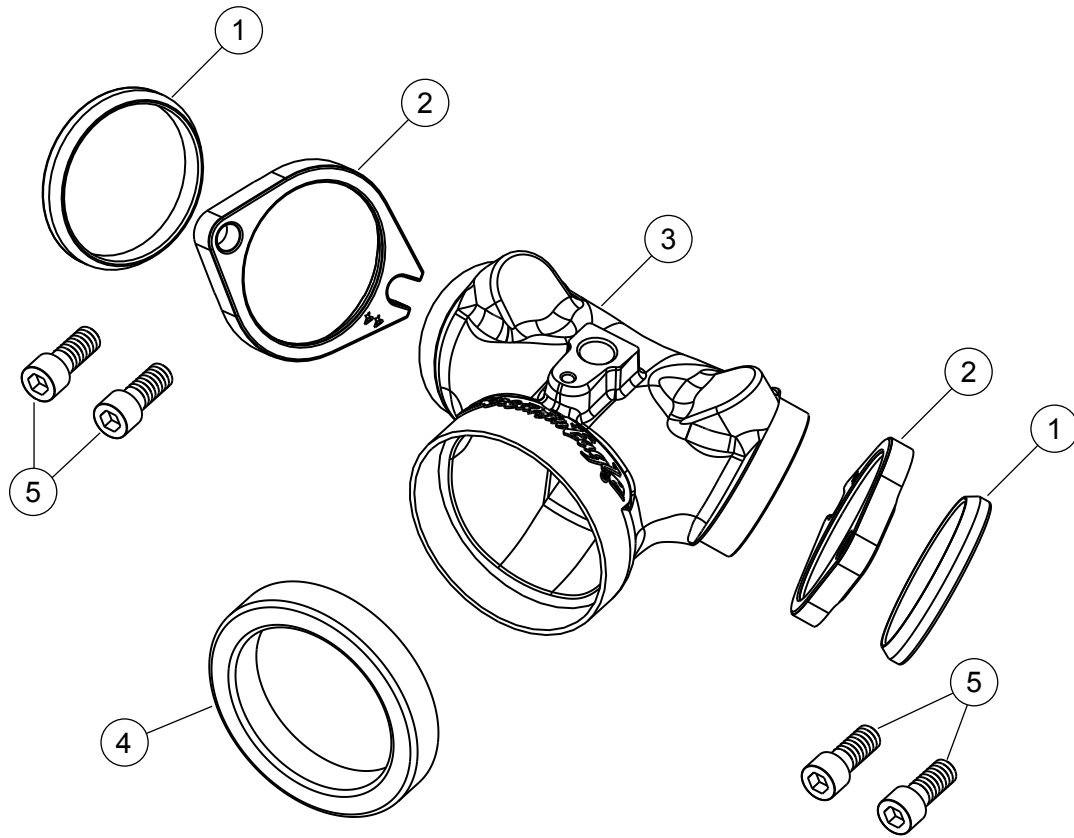


Figure 3. Service Parts: Performance Intake Manifold