



INSTRUCTIONS

J04725

2012-07-18



TOURING STARTER COVER

GENERAL

Kit Number

66477-10

Models

For model fitment information, see the P&A Retail Catalog or the Parts and Accessories section of www.harley-davidson.com (English only).

Additional Parts Required

Loctite 243 Threadlocker and Sealant (blue) (P/N 99642-97).

⚠ WARNING

Rider and passenger safety depend upon the correct installation of this kit. If the procedure is not within your capabilities or you do not have the correct tools, have a Harley-Davidson dealer perform the installation. Improper installation of this kit could result in death or serious injury. (00308b)

Kit Contents

See Figure 4 and Table 1.

There are no Service Parts available with this kit.

INSTALLATION

⚠ WARNING

To prevent accidental vehicle start-up, which could cause death or serious injury, disconnect negative (-) battery cable before proceeding. (00048a)

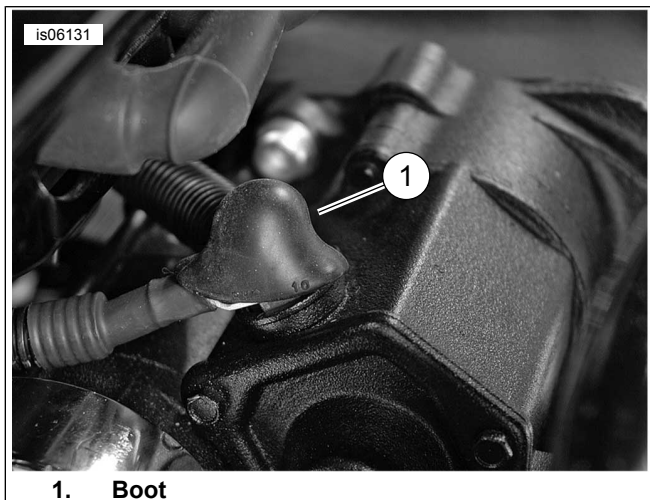


Figure 1. Tri-Glide Positive Cable At Starter With Boot



Figure 2. Touring Positive Cable At Starter With Boot

1. Disconnect the battery cables, negative cable first.
2. Disconnect spark plug wires at the coil
3. See Figure 1 and Figure 2. Verify that the positive battery cable rubber boot at the starter terminal is in place and in good condition. Verify that the cable is routed correctly.
4. See Figure 3. Remove starter motor end cover (1) and cover mounting bracket (2). Save nuts.

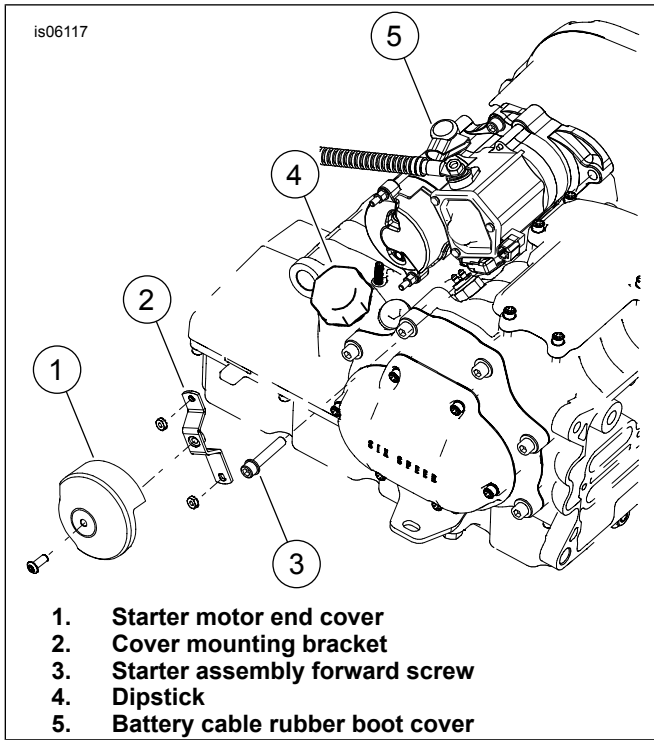


Figure 3. Remove Components

5. Remove starter assembly forward screw. Save screw (3).
6. Remove dipstick (4).

7. See Figure 4 and Table 1. Mount the new cover mounting bracket (2) with the nuts (A) removed in Step 1. Position the bracket in the center of its slotted holes. Tighten nuts to 4.5–6.8 N·m (40–60 in-lbs).
8. Position the starter cover (1) over the starter/solenoid assembly.
9. Fasten the left side of the cover using the washer (4) and the forward screw (B), previously removed in Step 5. Apply Loctite 243 threadlocker and sealant (blue) to screw and and tighten screw to 33.9–36.6 N·m (25–27 ft-lbs).
10. Mount the right side of the cover to the bracket previously installed using screws (3). If the cover and bracket holes are misaligned, remove the cover and adjust the mounting bracket up or down as required. Tighten screws to 5.7–7.9 N·m (50–70 in-lbs).
11. Remove the adhesive backing from the dual lock strip on the inside of the starter cover end trim (5). Position the small pry notch in the end trim at approximately the 7:30 o'clock position and snap the trim into the starter cover. Press firmly on the center of the end trim to adhere the dual lock strip to the cover.

12. Install dipstick.

13. Connect spark plug wires.

14. Connect the battery cables, positive cable first.

SERVICE PARTS

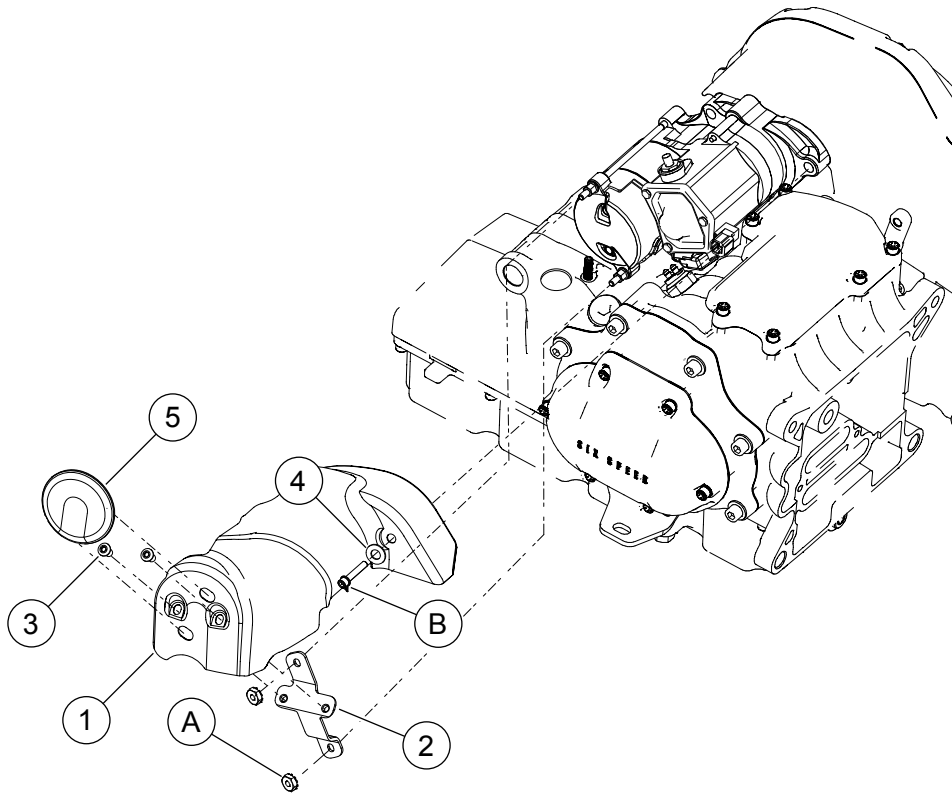


Figure 4. Service Parts: Touring Starter Cover

Table 1. Service Parts Table

Item	Description (Quantity)	Part Number
1	Starter cover	Not Sold Separately
2	Cover mounting bracket	Not Sold Separately
3	Screws, buttonhead, 1/4-20 x 0.50 in. (2)	Not Sold Separately
4	Washer, 0.34 I.D. x 0.369 O.D. x 0.45 thick	Not Sold Separately
5	Starter cover end trim	66481-10
Items mentioned in text, but not included in kit:		
A	Nut (2)	
B	Screw	