



# INSTRUCTIONS

J04742

2008-06-19



## ADVANCED AUDIO CB ANTENNA KIT (TOUR-PAK MOUNT)

### GENERAL

#### Kit Number

76400-09

#### Models

For model fitment information, see the P&A Retail Catalog or the Parts and Accessories section of [www.harley-davidson.com](http://www.harley-davidson.com) (English only).

#### Additional Parts Required

Unless they have already been fitted:

**FLHT models** will require the installation of an Advanced Audio AM/FM/CD Radio Kit (76412-06).

**For ALL models**, a CB Radio Kit (76416-06B) is needed.

Prior installation of a Tour-Pak<sup>®</sup> is required. See a Harley-Davidson dealer for availability of color-matched King or Chopped Tour-Paks to match your vehicle and additional items that may be required when mounting the Tour-Pak to your model.

These items are available from a Harley-Davidson Dealer.

#### ⚠ WARNING

**Rider and passenger safety depend upon the correct installation of this kit. Use the appropriate service manual procedures. If the procedure is not within your capabilities or you do not have the correct tools, have a Harley-Davidson dealer perform the installation. Improper installation of this kit could result in death or serious injury. (00333b)**

#### NOTE

*This instruction sheet references service manual information. A service manual for your model motorcycle is required for this installation and is available from a Harley-Davidson Dealer.*

### Kit Contents

See Figure 4 and Table 1.

### INSTALLATION

#### NOTE

*Harley-Davidson strongly recommends that the antenna be installed where indicated. In this position the antenna will cause the least interference with the opening and closing of the Tour-Pak lid.*

#### Tour-Pak Preparation

1. Refer to the service manual and follow the instructions given to remove the right side saddlebag.

2. Open the Tour-Pak lid and remove all items from the Tour-Pak base.

3. **Models with rubber mat:** Remove the mat. **Models with molded liner:** Open the map pocket and remove the acorn nuts with flat washers. Remove the map pocket and liner.

#### ⚠ WARNING

**To prevent accidental vehicle start-up, which could cause death or serious injury, remove main fuse before proceeding. (00251b)**

4. Remove the main fuse following the instructions in the service manual.

5. See Figure 1. Measure and determine the center (1) of the outside rear Tour-Pak wall.

6. Lay a strip of 2 in (51 mm) wide masking tape from top to bottom over the approximate center of the outside rear Tour-Pak wall.

7. Measure again and mark the center near the top of the tape strip. Measure and mark the center near the bottom of the strip. Draw a line from the top mark to the bottom mark.

8. Facing the tape, measure 9-1/4 in (235 mm) from the center line to the right side of the outside rear Tour-Pak wall.

9. Lay a strip of 2 in (51 mm) wide masking tape from the top to approximately half-way down the outside rear Tour-Pak wall at the 9-1/4 in (235 mm) distance from the center line.

10. Measure again and mark the tape 9-1/4 in (235 mm) (6) from the center line near the top of the tape strip and again near the bottom of the strip. Draw a line from the top mark to the bottom mark.

11. Measure down 1-1/4 in (31.8 mm) (4) from the top edge of the Tour-Pak on the right side vertical line and draw a short horizontal line (2) across the vertical line.

12. Measure down 1-1/2 in (38.1 mm) (5) from the **first** horizontal line and draw another short horizontal line (3) across the vertical line.

13. Mark the center of the crossed lines with a center punch, then:

a. Drill two 1/8 in (3 mm) guide holes through the Tour-Pak wall.



- b. Drill a 17/32 in (13.5 mm) hole (2) through the **upper** guide hole.
- c. Drill a 1/4 in (6.4 mm) hole (3) through the **lower** guide hole.

14. Remove the tape. Lightly sand to remove burrs and sharp edges. Clean the Tour-Pak surface of tape residue with a mixture of 50-70% isopropyl alcohol and 30-50% distilled water.

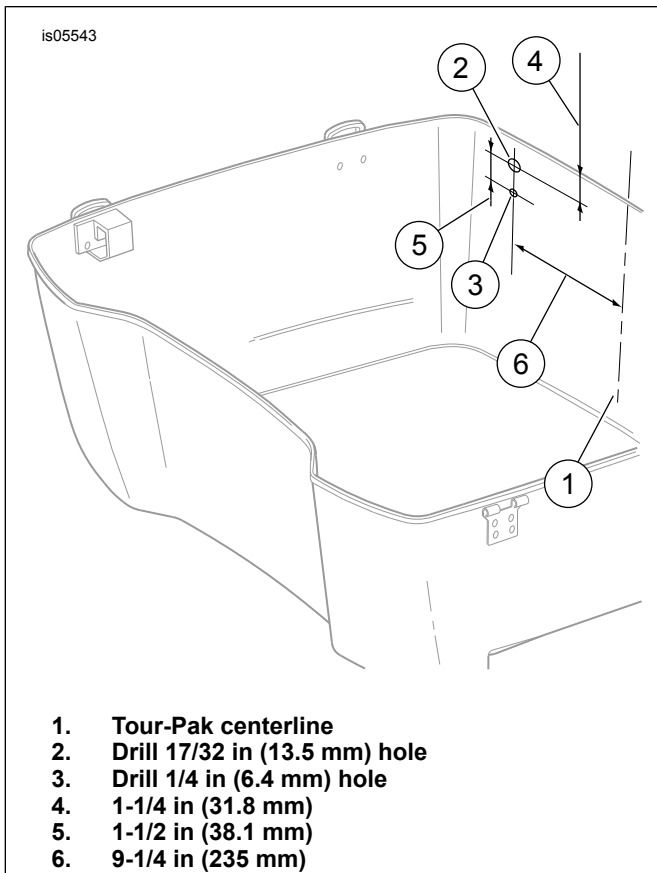


Figure 1. Tour-Pak CB Antenna Drilling Location

15. If the Tour-Pak IS NOT drilled for wiring at the lower right forward edge and if the Tour-Pak interior has a MEDIUM GRAY, GLOSSY finish (Type 1 Tour-Pak): If the Tour-Pak interior has a MATTE BLACK finish (Type 2 Tour-Pak):

- a. See Figure 2. Measure and determine the center (1) of the support plate (2) that covers the floor of the Tour-Pak.
- b. Lay a strip of 2 in (51 mm) wide masking tape from the front to about half-way back down the approximate center of the support plate.
- c. Measure again and mark the center of the support plate (2) at the front of the tape strip, and again near the back. Draw a straight line through the two marks.
- d. Facing the tape, measure 7-1/2 in (190 mm) (5) from the center line to the right side floor of the Tour-Pak.

- e. Lay a strip of 2 in (51 mm) wide masking tape on the Tour-Pak floor in front of the support plate at the 7-1/2 in (190 mm) distance from the center line, from the support plate to the front wall.
- f. Measure again and mark the tape 7-1/2 in (190 mm) from the center line, near the front wall and again near the support plate. Draw a line between the two marks.
- g. Measure forward 5/8 in (16 mm) (4) from the front edge of the support plate, and draw a short line across the line drawn in the step above.
- h. Mark the center of the crossed lines with a center punch, then drill a 1/8 in (3 mm) guide hole through the Tour-Pak floor.
- i. Lay a strip of 2 in (51 mm) wide masking tape on the outer surface of the Tour-Pak floor, centered on the guide hole. Cut a hole in the tape at the guide hole.
- j. From the underside of the Tour Pak drill a 3/4 in (19 mm) hole (3) from the outside of the Tour-Pak to the inside.
- k. Remove the tape. Lightly sand to remove burrs and sharp edges. Clean the inside and outside Tour-Pak surfaces of tape residue with a mixture of 50-70% isopropyl alcohol and 30-50% distilled water.
- l. See Figure 3. Measure and determine the center (1) of the inside front Tour-Pak wall.
- m. Lay a strip of 2 in (51 mm) wide masking tape from top to bottom over the approximate center of the inside front Tour-Pak wall.
- n. Measure again, and mark the center near the top of the tape strip. Measure and mark the center near the bottom of the strip. Draw a line from the top mark to the bottom mark.
- o. Facing the tape, measure 6-3/8 in (162 mm) from the center line to the right side front Tour-Pak wall. Do not follow the curve of the wall, but measure **straight across**. See Figure 3 inset.
- p. Lay a strip of 2 in (51 mm) wide masking tape from the bottom to approximately half way up the inside front Tour-Pak wall at the 6-3/8 in (162 mm) distance from the center line.
- q. Measure again and mark the tape 6-3/8 in (162 mm) (5) **straight across** from the center line, near the top of the tape strip and again near the bottom of the strip. Draw a line from the top mark to the bottom mark.
- r. **For King Tour-Pak:** Measure down 7-19/32 in (193 mm) (3) from the top edge of the Tour-Pak. **For Chopped Tour-Pak:** Measure down 4-19/32 in (117 mm) (3) from the top edge of the Tour-Pak. Draw a short horizontal line across the vertical line.
- s. Mark the center of the crossed lines with a center punch, then drill a 1/8 in (3 mm) guide hole through the Tour-Pak front wall.

- t. Lay a strip of masking tape on the outer surface of the Tour-Pak front wall, centered on the guide hole. Cut a hole in the tape at the guide hole.
- u. From the outside of the Tour Pak drill a 3/4 in (19 mm) hole (4) through the guide hole to the inside.
- v. Remove the tape. Lightly sand to remove burrs and sharp edges. Clean the inside and outside Tour-Pak surfaces of tape residue with a mixture of 50-70% isopropyl alcohol and 30-50% distilled water.

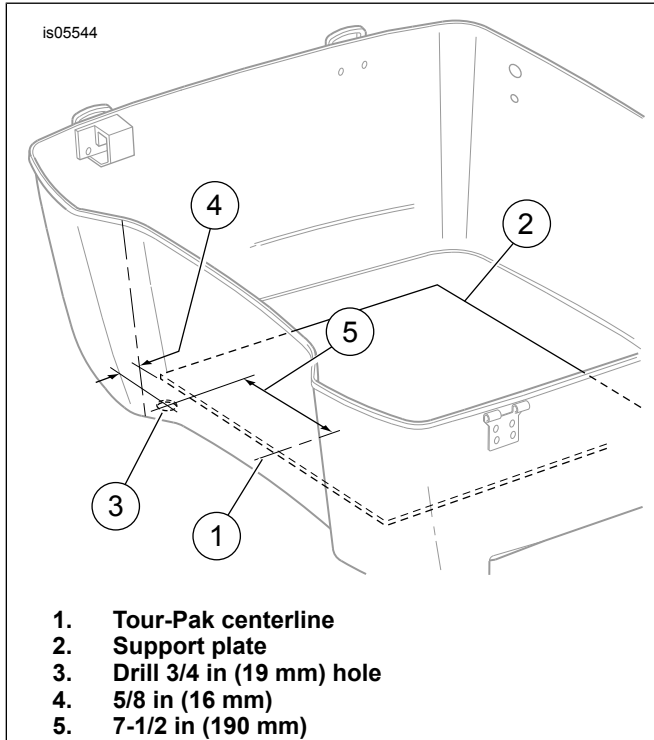


Figure 2. CB Antenna Cable Drilling Location (Type 1 Tour-Pak)

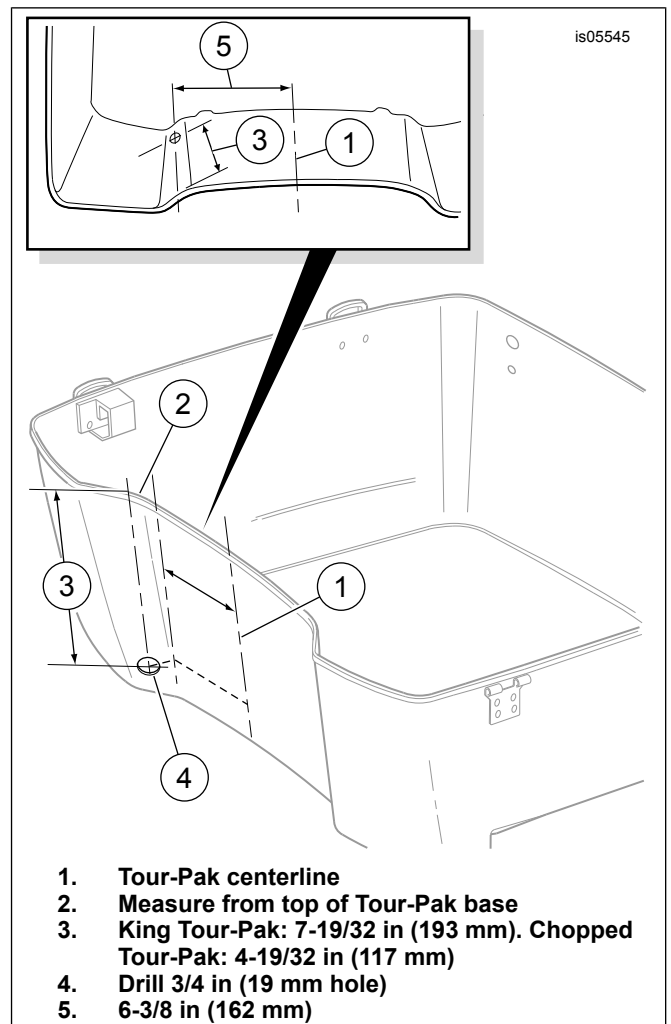


Figure 3. CB Antenna Cable Drilling Location (Type 2 Tour-Pak)

## Antenna Mounting

1. See Figure 4. Insert the adapter (3) into the hole on the **top** of the antenna base (2).
2. Line up the threaded hole in the **SIDE** of the adapter with the upper hole on the back side of the base. Insert the threaded stud (8) into the **upper** hole on the back side of the base, and thread the stud into the hole in the adapter. Tighten the stud securely.
3. Assemble the base gasket (4) to the antenna base.
4. With the adapter (3) facing **up**, position the base assembly over the holes drilled earlier in the outside rear Tour-Pak wall. Be sure the threaded stud (8) goes through the larger (top) hole.
5. Place the antenna reinforcement plate (5) in position inside the Tour-Pak. Place the ring terminal over the antenna mast stud. Use the hex nut with lock washer (9) to attach the cable extension, but do not fully tighten at this time.
6. Install the TORX<sup>®</sup> screw (7) and small lockwasher (6) through the smaller (bottom) hole of the antenna reinforcement plate into the antenna base. Tighten the screw securely. Tighten the hex nut securely.
7. Install the antenna mast (1) onto the antenna base adapter (3).

## Antenna Connection

1. Route the socket end of the antenna cable (10) through the hole in the lower right front of the Tour-Pak.
2. Mate the socket end of the antenna cable to the pin terminal coming from the CB antenna cable extension (13).
3. Route enough cable into the Tour-Pak so the cable rests flat on the bottom of the Tour-Pak. Insert the antenna cable in the rear clip at the bottom of the Tour-Pak.
4. Install the grommet (11) onto the antenna cable near the hole in the Tour-Pak. Carefully work the grommet into the hole to seal the opening around the cable.
5. Install the rubber mat or molded liner. Close the Tour-Pak lid.
6. Route the CB antenna cable along the inside of the luggage rack, forward to the front luggage rack mount. Use a cable strap (12) to secure the cable to the frame rail, underneath the chrome cover.
7. Continue routing the antenna cable forward on the vehicle:
  - a. Tuck the cable inboard of the frame tube and avoid the forward saddlebag guard mounting screw head so the cable does not get pinched by the seat. Use four cable straps to fasten the antenna cable to the frame tube.
  - b. Route the cable along the right side of the battery cavity and harness tray to the rear of the fuel tank.
  - c. Remove the fuel tank console attaching hardware and lift the console from the tank.
  - d. Route the antenna cable forward under the right rear edge of the console, along the right side of the fuel tank canopy and under the right front edge of the console. Install the console, taking care not to pinch the antenna cable under the console.
  - e. Route the cable down tight to the fuel tank and cable strap it tight to the main harness, as close to the fuel tank as possible.
  - f. Continue the antenna cable forward into the fairing, using cable straps to fasten to the main harness.

Be sure the wires or antenna cable do not pull tight when handlebars are turned fully to left or right fork stops.

30. Remove the outer fairing and windshield. Refer to the service manual.
31. If not already done, install the AM/FM radio, AM/FM antenna and CB radio per the instructions in **those** kits.
32. Locate the front end of the CB antenna cable.
33. Route the antenna cable over to the CB module.
34. Plug the antenna cable connector into the back of the CB module.
35. Tighten the knurled nut to secure the connector to the CB module.
36. Use cable straps to fasten the antenna cable to the existing harnesses inside the fairing.

### NOTE

*To prevent possible damage to the sound system, verify that the ignition/key switch is in the OFF position before installing the main fuse.*

37. Verify that the ignition/key switch is in the OFF position. Refer to the service manual and follow the instructions given to install the main fuse.
38. Test the CB radio functions for proper operation. If poor reception or transmission is noted, see Standing Wave Ratio (SWR) Adjustment, below.
39. Install the outer fairing and windshield. Refer to the service manual.

## Standing Wave Ratio (SWR) ADJUSTMENT

Standing wave ratio (SWR) is a procedure that verifies how well the CB transmitter and antenna are matched. If poor CB reception or transmission is detected, the SWR adjustment should be performed.

The SWR adjustment procedure is in the electrical diagnostic manual or can be performed by a Harley-Davidson dealer.

### ▲ WARNING

**Be sure that steering is smooth and free without interference. Interference with steering could result in loss of vehicle control and death or serious injury. (00371a)**

## SERVICE PARTS

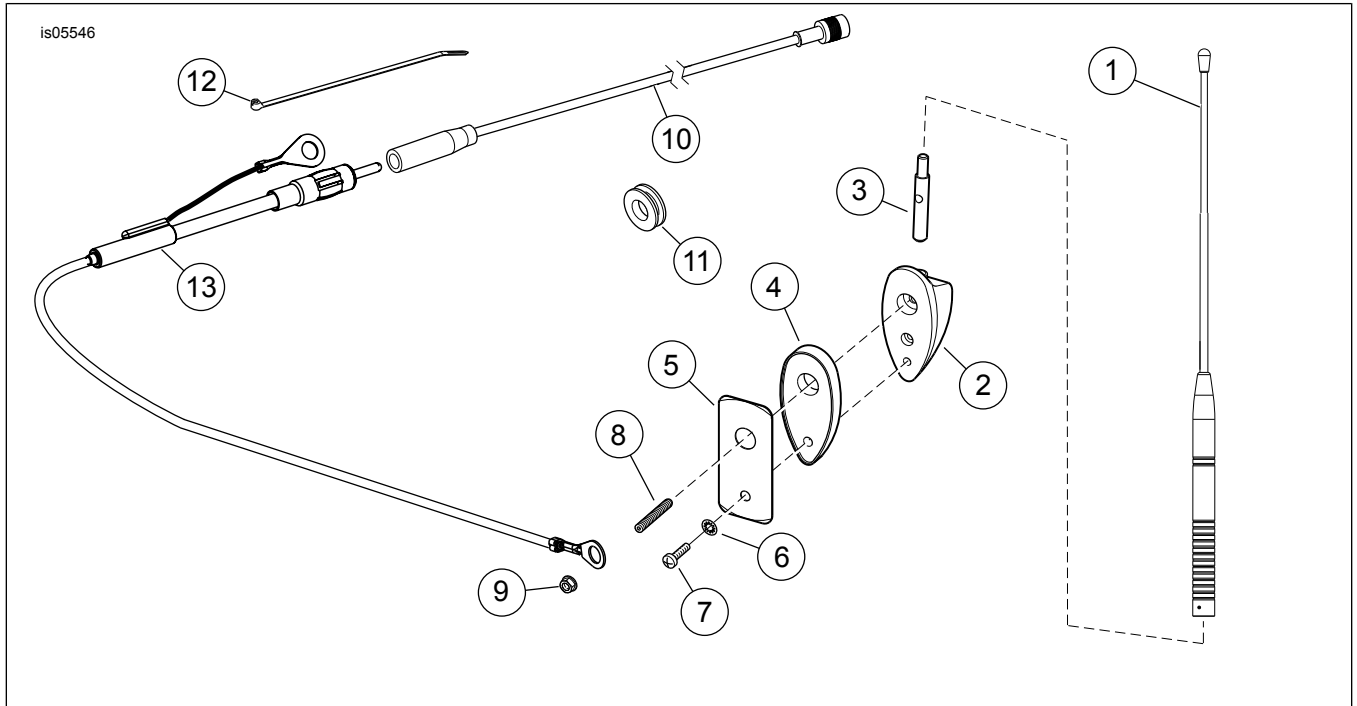


Figure 4. Service Parts: Advanced Audio CB Antenna Kit

Table 1. Service Parts Table

Item	Description (Quantity)	Part Number
1	Antenna mast, CB	76250-09
2	Antenna base	Not Sold Separately
3	Adapter, antenna	Not Sold Separately
4	Gasket, antenna base	76255-86
5	Reinforcement plate	76322-97
6	Lock washer, internal tooth, #10	7118
7	Screw, pan head, TORX, #10-32 x 3/4 in	2576
8	Stud, M5 x 35 mm	3227
9	Nut, with lock washer, M5	7492
10	CB antenna cable	76319-06
11	Grommet	11486
12	Cable strap (10)	10006
13	CB antenna cable extension	76294-09