



INSTRUCTIONS

J05074

2011-05-31



RIM SEAL KITS FOR TUBELESS TIRES ON LACED WHEELS

GENERAL

Kit Numbers

44752-11, 44753-11, 44754-11, 44755-11

Kit Identification

Table 1. Kit Identification

Kit	Wheel Size
44752-11	16 x 3
44753-11	17 x 3
44754-11	18 x 3.5
44755-11	16 x 5

Kit Contents

See Figure 3 and Table 2.

INSTALLATION

⚠ WARNING

Only install original equipment tire valves and valve caps. A valve, or valve and cap combination, that is too long or too heavy can strike adjacent components and damage the valve, causing rapid tire deflation. Rapid tire deflation can cause loss of vehicle control, which could result in death or serious injury. (00281a)

⚠ WARNING

Match tires, tubes, rim strips or seals, air valves and caps to the correct wheel. Contact a Harley-Davidson dealer. Mismatching can lead to tire damage, allow tire slippage on the wheel or cause tire failure, which could result in death or serious injury. (00023c)

⚠ WARNING

Do not use lubricants when installing rim seal. Lubricants can cause rim seal slippage leading to rapid tire deflation, which could result in death or serious injury. (00612b)

⚠ WARNING

Install new seal before mounting tire. Riding motorcycle without seal in place can sever valve stem causing rapid air loss leading to the loss of control, which could result in death or serious injury. (00622b)

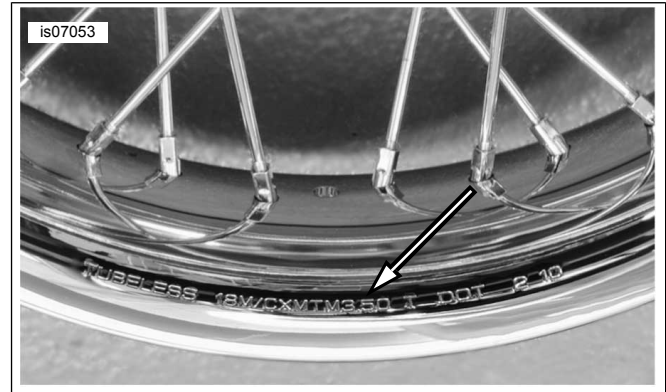


Figure 1. Tubeless Laced Wheel Identification

See Figure 1. Tubeless laced (spoked) rims are identified by the word "TUBELESS" etched into the outside of the rim and are manufactured to the MTM profile. A typical identifier would be "TUBELESS 16M/CxMTM3.00 T DOT".

- DO NOT install a rim seal and tubeless tire on a laced rim that is not identified as such.
- DO NOT install a tube in a tire mounted on a tubeless laced rim.
- DO NOT install a tire on a tubeless laced rim without the rim strip and rim seal installed.

Failure to follow these guidelines could result in sudden and unexpected loss of air pressure, resulting in loss of control, serious injury, or death.

NOTE

- On tubeless laced wheels, a damaged or leaking valve stem requires replacement of the rim seal.
- The rim strip and rim seal must be replaced whenever the tire is removed.
- Make sure no spokes protrude through nipples. Be sure to align the valve stem hole in the rim strip with the valve stem hole in the rim.
- Do not use lubricant when installing the rim strip and rim seal to the rim. Lubricant must be used when installing the tire to the rim.
- Only install original equipment tubeless rim seals and valve caps.
- Place the rim in a tire mounting fixture to ease rim strip and seal installation.

1. See Figure 2. Install a **new** rim strip into the rim well. Make sure no spokes protrude through the spoke nipples, and be sure to align the valve stem hole in the rim strip with the valve stem hole in the rim.

- See Figure 3. Install the **new** rim seal (1), aligning the valve stem (A) with the hole in the wheel (B) rim and rim strip (2).
- Insert the valve stem through the rim hole and secure with the nut (3). Tighten to 1.4–1.7 N·m (12–15 **in-lbs**).
- Install the tire.



Figure 2. Installing Rim Strip, Tubeless Laced Wheel

SERVICE PARTS

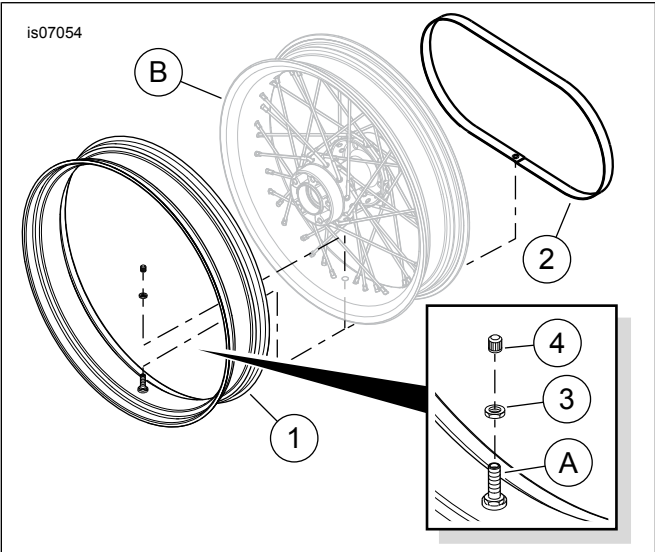


Figure 3. Service Parts, Rim Seal Kits

Table 2. Service Parts		
Item	Description (Quantity)	Part Number
Rim Seal Kit (16 x 3), Part No. 44752-11:		
1	Rim seal (16 x 3)	Not sold separately
2	Rim strip, for 16 in wheel	43164-05
3	Hex nut	54321-85

Table 2. Service Parts		
Item	Description (Quantity)	Part Number
4	Valve cap	41123-79
Rim Seal Kit (17 x 3), Part No. 44753-11:		
1	Rim seal (17 x 3)	Not sold separately
2	Rim strip, for 17 in wheel	43341-09A
3	Hex nut	54321-85
4	Valve cap	41123-79
Rim Seal Kit (18 x 3.5), Part No. 44754-11:		
1	Rim seal (18 x 3.5)	Not sold separately
2	Rim strip, for 18 in wheel	42300007
3	Hex nut	54321-85
4	Valve cap	41123-79
Rim Seal Kit (16 x 5), Part No. 44755-11:		
1	Rim seal (16 x 5)	Not sold separately
2	Rim strip, for 16 in wheel	43099-09
3	Hex nut	54321-85
4	Valve cap	41123-79
Items mentioned in text, but not included in kit.		
A	Valve stem (part of rim seal)	
B	Tubeless laced wheel	