



# INSTRUCTIONS

J04746

2008-06-20



## ADVANCED AUDIO CB ANTENNA KIT (FRAME MOUNT)

### GENERAL

#### Kit Number

76410-09

#### Models

For model fitment information, see the P&A Retail Catalog or the Parts and Accessories section of [www.harley-davidson.com](http://www.harley-davidson.com) (English only).

#### Additional Parts Required

For **ALL** models, a CB Radio Kit (76416-06B) is needed.

#### ⚠ WARNING

Rider and passenger safety depend upon the correct installation of this kit. Use the appropriate service manual procedures. If the procedure is not within your capabilities or you do not have the correct tools, have a Harley-Davidson dealer perform the installation. Improper installation of this kit could result in death or serious injury. (00333b)

#### NOTE

This instruction sheet references service manual information. A service manual for your model motorcycle is required for this installation and is available from a Harley-Davidson Dealer.

### Kit Contents

See Figure 2 and Table 1.

### INSTALLATION

#### ⚠ WARNING

To prevent accidental vehicle start-up, which could cause death or serious injury, remove main fuse before proceeding. (00251b)

1. Refer to the service manual and follow the instructions to remove the main fuse.
2. Refer to the service manual and follow the instructions given to remove the **right side** saddlebag.
3. See Figure 1. Install the CB antenna bracket clamps (1 and 2) around the saddlebag guard (3) and install four screws (4). Tighten screws finger-tight.
4. **FLHX models:** Remove and discard the hole plug from the right side rear fender fascia. Install grommet (10).

5. See Figure 2. Thread one of the 1/2-20 thin nuts (3) from the kit onto the antenna base assembly. Install the large internal tooth lockwasher (4) on the threads of the antenna base and insert the antenna base, from the top, through the hole in the antenna mounting bracket.
6. Install the second 1/2-20 nut on the antenna base threads. Tighten the lower nut to 5.4–10.8 N·m (48–96 in-lbs).
7. Install the antenna mast (1) on the antenna base (2).
8. **FLHX models:** Install antenna through the grommet.
9. Align the CB antenna parallel with the radio antenna. Adjust position of the antenna bracket clamp location if necessary. Tighten the mounting screws to 4.5–6.7 N·m (40–60 in-lbs).

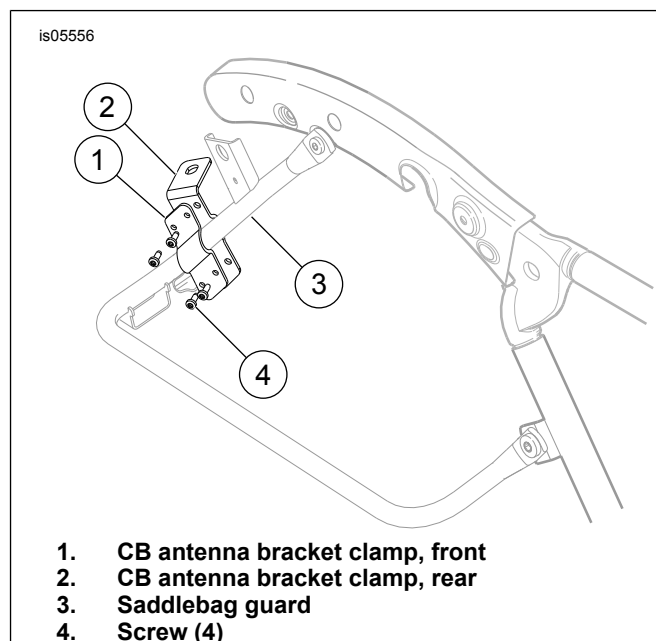


Figure 1. Antenna Mounting Bracket Location

10. Install the **90 degree** antenna cable connector into the antenna base.
11. Tighten the knurled nut to secure the connector to the antenna base.
12. Secure the antenna cable to the saddlebag rear support bracket with a cable strap (8).
13. Route the CB antenna cable (9) up the saddlebag rear support bracket, along the inside of the luggage rack, forward to the front luggage rack mount, then across to the left side of the vehicle.

14. Use cable straps (8) to secure the cable to the frame rail, underneath the chrome cover.

15. Continue routing the antenna cable forward on the vehicle:

- a. Tuck the cable inboard of the frame tube and avoid the forward saddlebag guard mounting screw head so the cable does not get pinched by the seat. Use four cable straps from the kit to fasten the antenna cable to the frame tube.
- b. Route the cable along the left side of the battery cavity and harness tray to the rear of the fuel tank.
- c. Remove the fuel tank console attaching hardware and lift the console from the tank.
- d. Route the antenna cable forward under the left rear edge of the console, along the left side of the fuel tank canopy and out under the left front edge of the console. Install the console, taking care not to pinch the antenna cable under the console.
- e. Route the cable along the fuel tank and cable strap it to the main harness, as close to the fuel tank as possible.
- f. Continue the antenna cable forward into the fairing, using cable straps to fasten to the main harness.

#### ⚠ WARNING

Be sure that steering is smooth and free without interference. Interference with steering could result in loss of vehicle control and death or serious injury. (00371a)

- Be sure the wires or antenna cable do not pull tight when handlebars are turned fully to left or right fork stops.

16. Remove the outer fairing and windshield. Refer to the service manual.

17. If not already done, install the AM/FM radio, AM/FM antenna and CB radio following the instructions in **those** kits.

18. Locate the front end of the CB antenna cable.

19. Route the antenna cable over to the CB module.

20. Plug the antenna cable connector into the back of the CB module.

21. Tighten the knurled nut to secure the connector to the CB module.

22. Use cable straps (8) to secure the antenna cable to the existing harnesses inside the fairing.

#### NOTE

To prevent possible damage to the sound system, verify that the ignition/light key switch is in the OFF position before installing the main fuse.

23. Verify that the ignition/light key switch is in the OFF position. Refer to the service manual and follow the instructions to install the main fuse.

24. Test the CB radio functions for proper operation. If poor reception or transmission is noted, see SWR ADJUSTMENT, below.

25. Install the outer fairing and windshield. Refer to the service manual.

## Standing Wave Ratio (SWR) ADJUSTMENT

Standing wave ratio (SWR) is a procedure that verifies how well the CB transmitter and antenna are matched. If poor CB reception or transmission is detected, the SWR adjustment should be performed.

The SWR adjustment procedure is in the electrical diagnostic manual or can be performed by a Harley-Davidson dealer.

## SERVICE PARTS

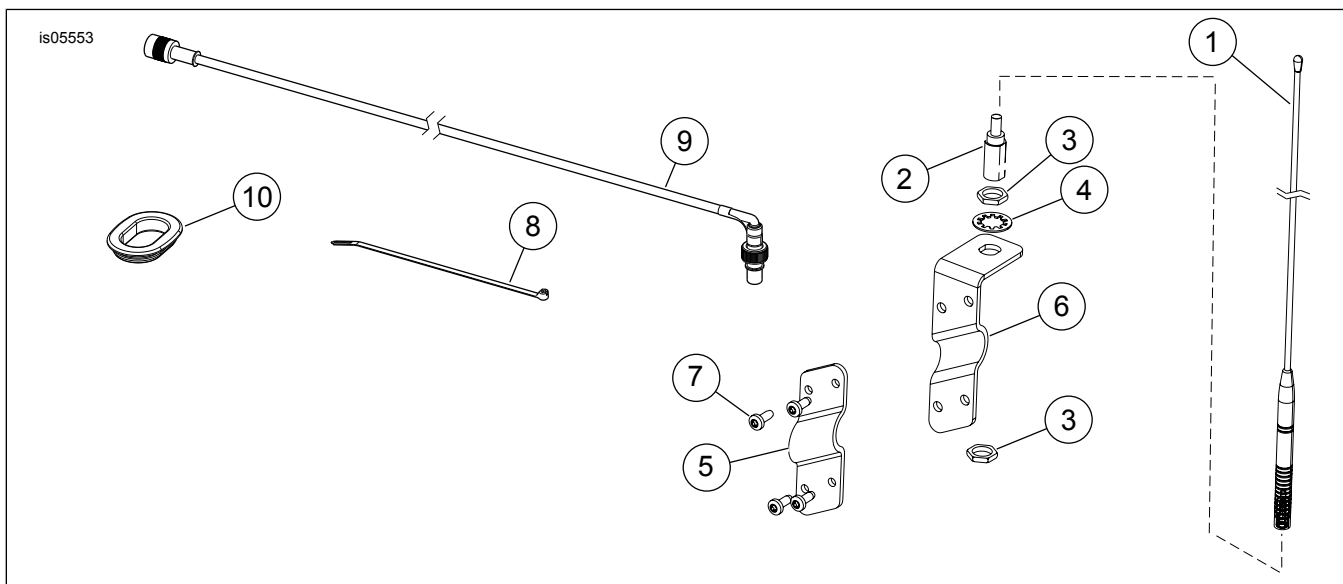


Figure 2. Service Parts: CB Frame Mount Antenna

**Table 1. Service Parts Table**

<b>Item</b>	<b>Description (Quantity)</b>	<b>Part Number</b>
1	Mast, CB antenna	76250-09
2	Antenna base	76354-00
3	Hex nut, thin, 1/2-20 (2)	76353-00
4	Lockwasher, internal tooth, 1/2 inch	7129
5	Bracket, CB antenna front	Not Sold Separately
6	Bracket, CB antenna rear	Not Sold Separately
7	Screw, pan head, #10-24 (4)	2441
8	Cable strap (10)	10006
9	CB antenna cable	76428-06
10	Grommet (for FLHX models)	59778-06