



INSTRUCTIONS

J04800

2008-10-07



SCREAMIN' EAGLE PRO TC 103 (1690 CC) STAGE 3 KIT

GENERAL

Kit Number

27514-08 (Silver) and 27513-08 (Black)

Models

For model fitment information, see the P&A Retail Catalog or the Parts and Accessories section of www.harley-davidson.com (English only).

Additional Parts Required

This kit requires the separate purchase of a SE high flow air cleaner kit. See SE Pro catalog for available kits.

This kit also requires the separate purchase of the Cam Drive Retention Kit (25566-06) and Cam Service Gasket Kit (17045-99C) which are available from a Harley-Davidson dealer.

Please see appropriate sections in service manual for the special tools required to install this kit.

Proper installation of this kit also requires ECM recalibration using EFI Race Tuner Kit. Refer to Screamin' Eagle Pro Catalog or contact a Harley-Davidson dealer.

▲ WARNING

Rider and passenger safety depend upon the correct installation of this kit. Use the appropriate service manual procedures. If the procedure is not within your capabilities or you do not have the correct tools, have a Harley-Davidson dealer perform the installation. Improper installation of this kit could result in death or serious injury. (00333b)

NOTE

This instruction sheet references service manual information. A service manual for your model motorcycle is required for this installation and is available from a Harley-Davidson dealer.

Kit Contents

See Figure 1 to Figure 3, and Table 1 to Table 3.

NOTE

This kit is intended for High Performance or Racing applications only and is not legal for sale or use on pollution controlled motor vehicles. This kit may reduce or void the limited vehicle warranty. Engine related performance parts are intended for the experienced rider only.

REMOVAL

Prepare for Service

1. Position motorcycle on a suitable lift.

NOTE

If vehicle is equipped with Harley-Davidson Smart Security System, see owner's manual for instructions to disarm the system.

2. Remove seat according to the instructions in the service manual.

▲ WARNING

When servicing the fuel system, do not smoke or allow open flame or sparks in the vicinity. Gasoline is extremely flammable and highly explosive, which could result in death or serious injury. (00330a)

3. Remove fuel tank according to the instructions in the service manual.
4. Remove main fuse. Refer to service manual for your motorcycle.

Remove Engine Components

1. Remove existing air cleaner assembly. Refer to AIR CLEANER REMOVAL in service manual.
2. Remove existing exhaust system. Refer to EXHAUST SYSTEM REMOVAL in service manual.
3. Disassemble engine top end and camplate assembly. Refer to appropriate ENGINE sections in service manual.
4. Remove existing clutch diaphragm spring. Refer to CLUTCH REMOVAL in service manual.

INSTALLATION

Install Engine and Clutch Components

1. See Figure 3. Inspect camshaft needle bearings (7) and replace if necessary.
2. See Figure 1 through Figure 3. Assemble cams to camplate, performance valve springs to cylinder heads and engine top end using parts from kit. Refer to appropriate ENGINE sections in service manual.
3. Install clutch diaphragm spring from kit. Refer to CLUTCH INSTALLATION in service manual.
4. Install exhaust system. Refer to EXHAUST SYSTEM INSTALLATION in service manual.
5. Install air cleaner assembly. Refer to AIR CLEANER INSTALLATION in service manual.

Final Assembly

1. Install main fuse. Refer to service manual for your motorcycle.



2. Install fuel tank according to the instructions in the service manual.
3. Install seat according to the instructions in the service manual.

⚠ WARNING

After installing seat, pull upward on seat to be sure it is locked in position. While riding, a loose seat can shift causing loss of control, which could result in death or serious injury. (00070b)

NOTICE

You must recalibrate the ECM when installing this kit. Failure to properly recalibrate the ECM can result in severe engine damage. (00399b)

SERVICE PARTS

4. Download the new ECM calibration using EFI Race Tuner Kit and Interface Box supplied with kit. Refer to Screamin' Eagle Pro Catalog or contact a Harley-Davidson dealer.
5. Start and run engine. Repeat several times to verify proper operation.

Operation

Refer to BREAK-IN RIDING RULES in the Owner's Manual for instructions to break-in the motorcycle.

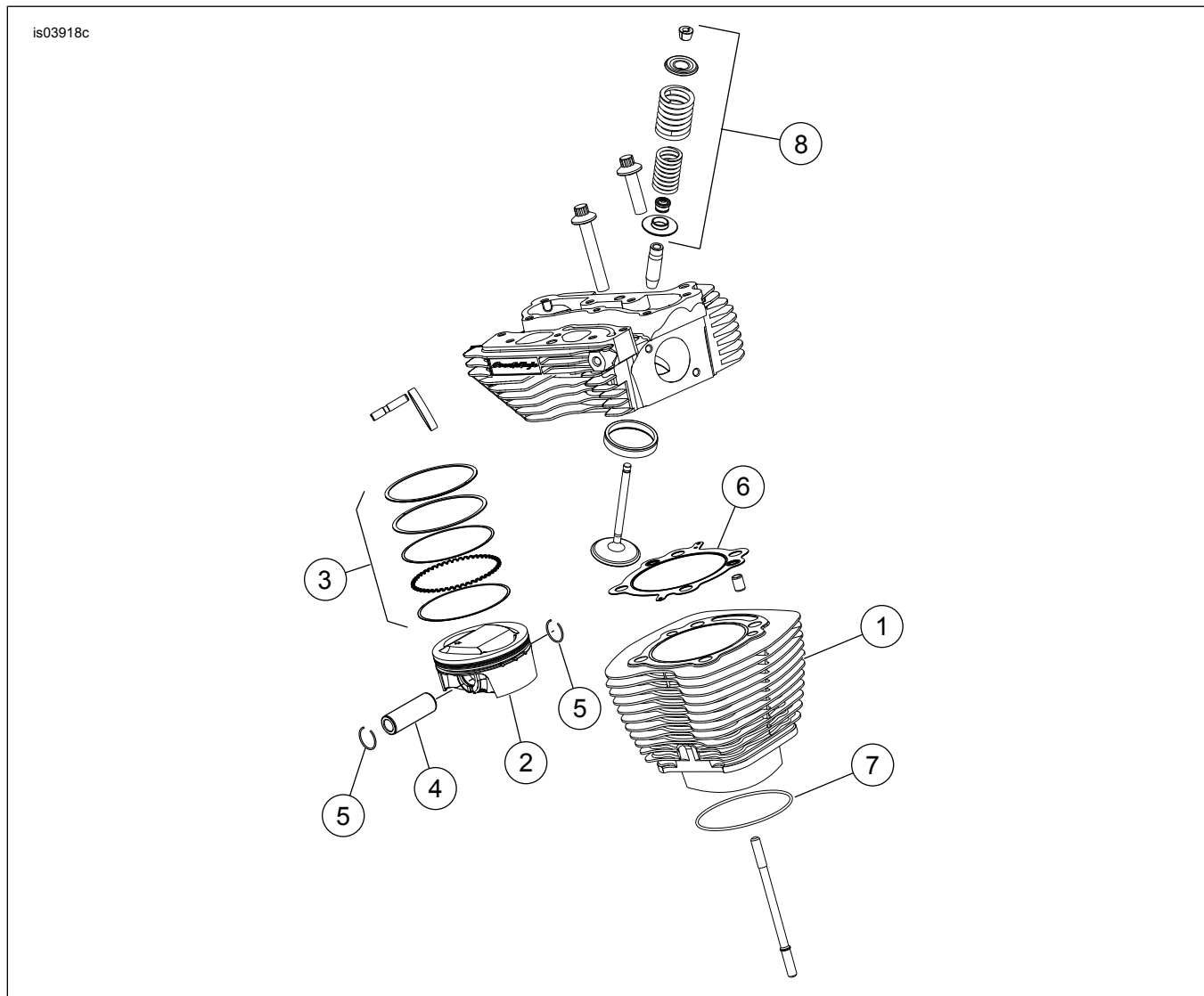


Table 1. Service Parts Table: Screamin' Eagle PRO TC 103 (1690 cc) Stage 3 Kit

Item	Description (Quantity)	Part Number	Item	Description (Quantity)	Part Number
1	3.875 Cylinder assembly, black (2) (used in kit 27513-08)	16547-99	5	Piston pin circlip (4)	22456-03
	3.875 Cylinder assembly, silver (2) (used in kit 27514-08)	16548-99	6	Gasket, cylinder head (2)	16787-99
2	Piston (2)	Not Sold Separately	7	O-ring, cylinder base (2)	11256
3	Piston ring set (2)	22457-03	8	Performance valve spring kit	18013-03A
4	Piston pin (2)	22455-03	Notes: Piston Kit (22144-08) includes items 2 through 5. Item 5 is also included in Engine Overhaul Gasket Kit (17053-99B). For valve spring components (Item 8) refer to instruction sheet J03548.		

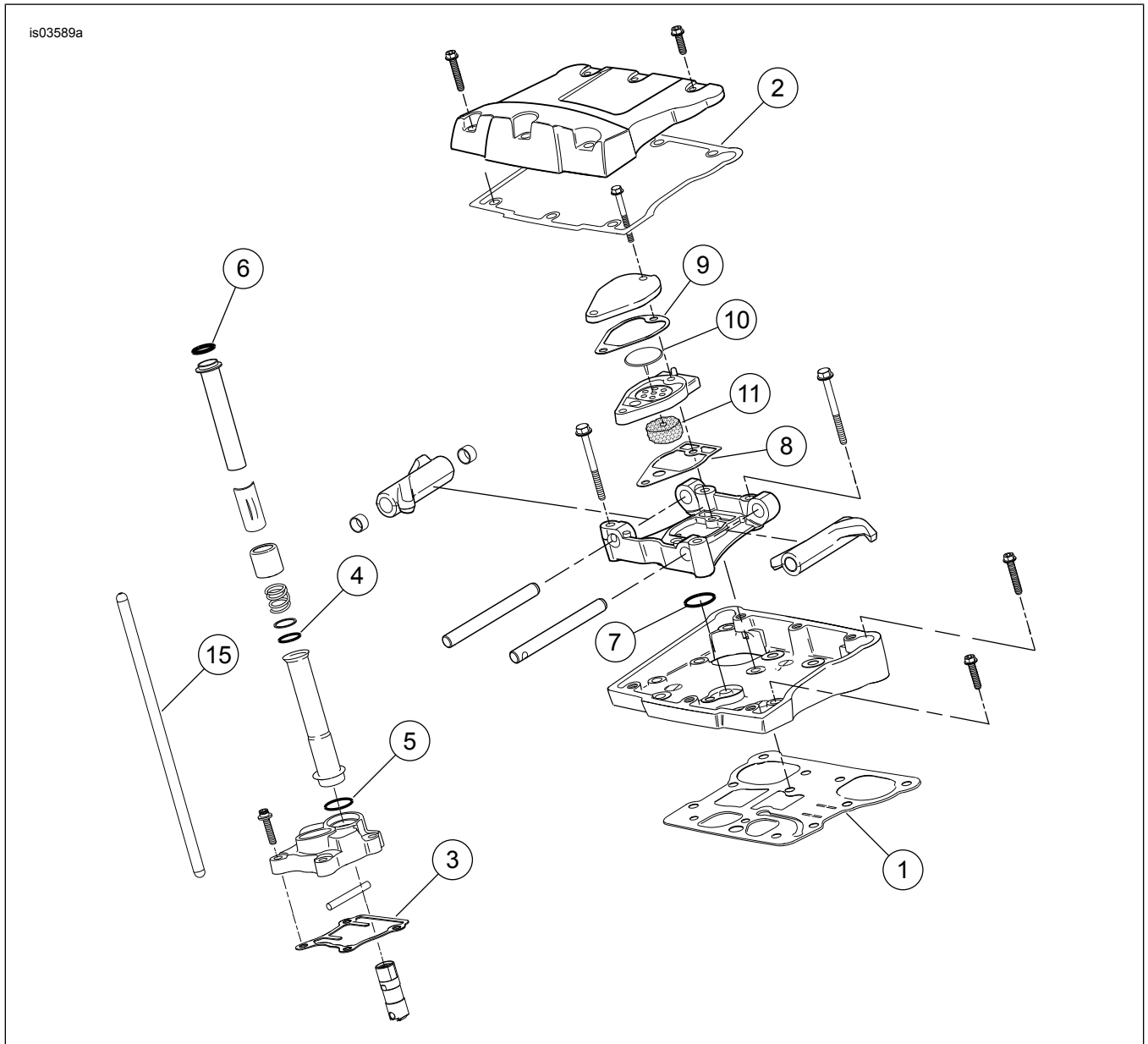


Figure 2. Service Parts: Screamin' Eagle Pro TC 103 (1690 cc) Stage 3 Kit

Table 2. Service Parts: Screamin' Eagle Pro TC 103 (1690 cc) Stage 3 Kit

Item	Description (Quantity)	Part Number	Item	Description (Quantity)	Part Number
1	Gasket, rocker cover base (2)	16719-99A	9	Gasket, breather (2)	Not Sold Separately
2	Gasket, rocker cover top (2)	17386-99A	10	Umbrella valve (2)	26858-99
3	Gasket, tappet cover (2)	18635-99B	11	Filter element, breather (2)	63815-99
4	O-ring, middle push rod cover (4)	11132A	12	Seal, EFI intake (2) (Not Shown)	29995-86B

Table 2. Service Parts: Screamin' Eagle Pro TC 103 (1690 cc) Stage 3 Kit

Item	Description (Quantity)	Part Number	Item	Description (Quantity)	Part Number
5	O-ring, lower push rod cover (4)	11145A	13	Seal, map sensor (Not Shown)	11291
6	O-ring, upper push rod cover (4)	11293	14	Spring, clutch diaphragm (Not Shown)	37951-98
7	O-ring, rocker arm support (2)	11270	15	Perfect fit pushrods kit, (+0.030 inch)	18401-03
8	Gasket, breather (2)	Not Sold Separately	Notes: Breather Gasket Kit (17162-03) includes 8 through 11. Items 1 through 13 are included in Upper End Overhaul Kit (17052-99B) and Items 6 and 7, Figure 1.		

is05094a

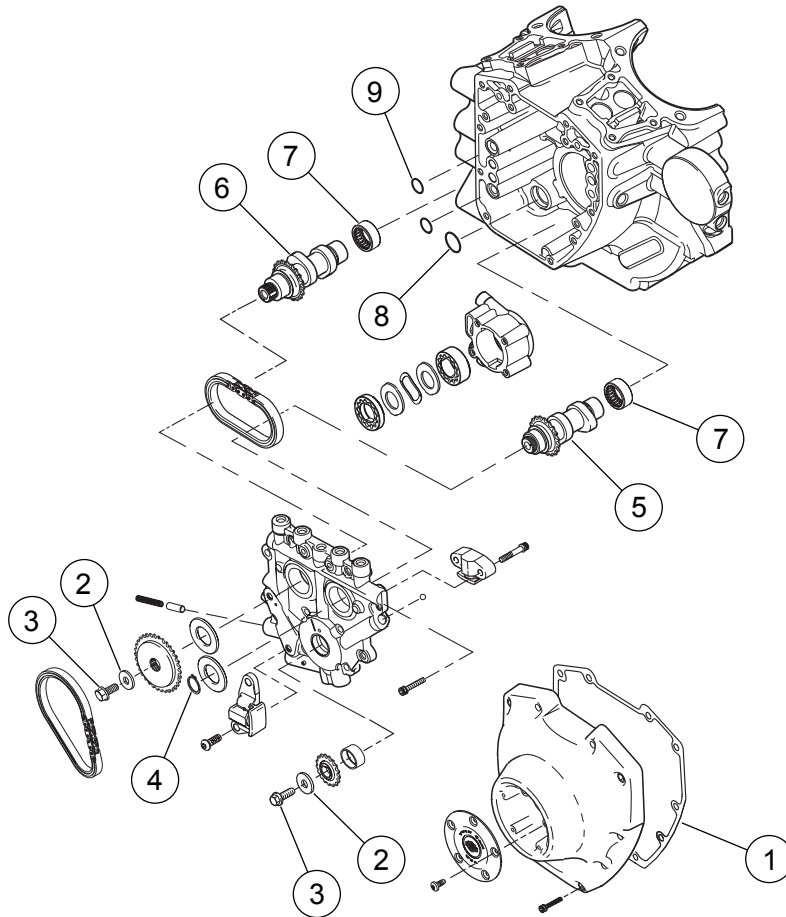


Figure 3. Service Parts: Screamin' Eagle Pro TC 103 (1690 cc) Stage 3 Kit

Table 3. Service Parts: Screamin' Eagle Pro TC 103 (1690 cc) Stage 3 Kit

Item	Description (Quantity)	Part Number
1	Gasket, cam cover	25244-99A
2	Washer	Not Sold Separately
3	Capscrew, flanged	Not Sold Separately
4	Retaining ring	11461
5	Camshaft, front	Not Sold Separately
6	Camshaft, rear	Not Sold Separately
7	Bearing, needle (2) (must be purchased separately, if needed)	9215
8	O-ring, oil pump to cam plate	11293
9	O-ring, cam plate to crankcase (2)	11301
10	Interface box, (VCI), Super Tuner (not shown)	32109-08A

Notes: Cam Drive Retention Kit (25566-06) includes 2 and 3. Items 1, 4, 8 and 9 are included in Cam Service Gasket Kit (17045-99C). Items 5 and 6 available in Cam Kit (25475-06).