



INSTRUCTIONS

J04974

2009-05-14



DYNA DOCKING HARDWARE KIT

GENERAL

Kit Number

54097-10

Models

For model fitment information, see the P&A Retail Catalog or the Parts and Accessories section of www.harley-davidson.com (English only).

Additional Parts Required

Without saddlebags: Turn signal relocation kit (P/N 53968-06C)

For Turn Signal Relocation: UltraTorch UT-100 (HD-39969) or Robinair Heat Gun (HD-25070) and Heatshrink Attachment (HD-41183)

For Turn Signal Relocation: Crimping tool (HD-38125-8 or equivalent).

Loctite® 243 Threadlocker and Sealant-Blue (99642-97)

▲ WARNING

Rider and passenger safety depend upon the correct installation of this kit. Use the appropriate service manual procedures. If the procedure is not within your capabilities or you do not have the correct tools, have a Harley-Davidson dealer perform the installation. Improper installation of this kit could result in death or serious injury. (00333b)

NOTE

This instruction sheet references service manual information. A service manual for your model motorcycle is required for this installation and is available from a Harley-Davidson Dealer.

Kit Contents

See Figure 1 and Table 1.

INSTALLATION

▲ WARNING

Disconnect negative (-) battery cable first. If positive (+) cable should contact ground with negative (-) cable connected, the resulting sparks can cause a battery explosion, which could result in death or serious injury. (00049a)

Sissy Bar and Fender Removal

1. Remove the seat and disconnect the battery cables, negative cable first.
2. Refer to the "CHASSIS" section in the service manual to remove the sissy bar and fender.

Front and Rear Docking Points

1. See Figure 1 and Table 1. Remove the OEM fender bracket, wire channel (G) and turn signal.
2. Place the flat side of front docking point (3) on the screw (2) followed by the washer (4). The tapered side of the docking point is towards the frame rail cover. Remove the adhesive cover from the large spacer (5) and attach the spacer to the mounting hole on the frame rail (between the fender and frame rail). Install the new fender mounting bracket (1) with the wire channel (G) and tighten the screw finger tight.

NOTE

If used without saddlebags, install rear docking point (7) and recess cover (8) according to instructions in Part Number 53968-06C, Directional Relocation Kit. If used with saddlebags, mount rear docking point according to instructions with saddlebag kit.

3. Place the rear docking point (7) over the long threaded end of the new turn signal stalk (D) with the countersunk side facing outward. Install the recess cover spacer (8) to turn signal stalk with the spacer stud facing toward the frame rail cover.
4. Place the spacer (6) between the fender and frame rail as you insert the docking point hardware through the hole in the frame rail cover, frame rail and fender.
5. Apply Loctite 242 to the turn signal stalk threads. Tighten the turn signal stalk with a wrench on the stalk's wrench flats to 16.3–24.4 N·m (12–18 ft-lbs).
6. Apply Loctite 242 to the front docking screw and tighten the screw to 16.3–24.4 N·m (12–18 ft-lbs).
7. Repeat steps for opposite side of fender.

Turn Signal Relocation

1. Refer to the instruction sheet in Kit 53968-06C for the turn signal relocation procedures if necessary.

Final Assembly

1. Refer to the service manual CHASSIS and/or REAR FENDER sections for any other procedures if necessary.
2. Connect the battery cables, positive cable first, then install the seat and check the turn signals for proper operation.



▲ WARNING

After installing seat, pull upward on seat to be sure it is locked in position. While riding, a loose seat can shift causing loss of control, which could result in death or serious injury. (00070b)

▲ WARNING

Be sure that all lights and switches operate properly before operating motorcycle. Low visibility of rider can result in death or serious injury. (00316a)

Maintenance

NOTE

In time, the docking points may wear causing the mating luggage rack or sideplates to become loose. The fit may be tightened using the following procedure.

1. Loosen the docking hardware.
2. Rotate the docking points clockwise approximately 45 degrees.
3. Tighten the docking hardware to the appropriate torque values as indicated in the installation procedures.

NOTE

This procedure can be repeated up to 3 times before replacement of the docking points is recommended.

SERVICE PARTS

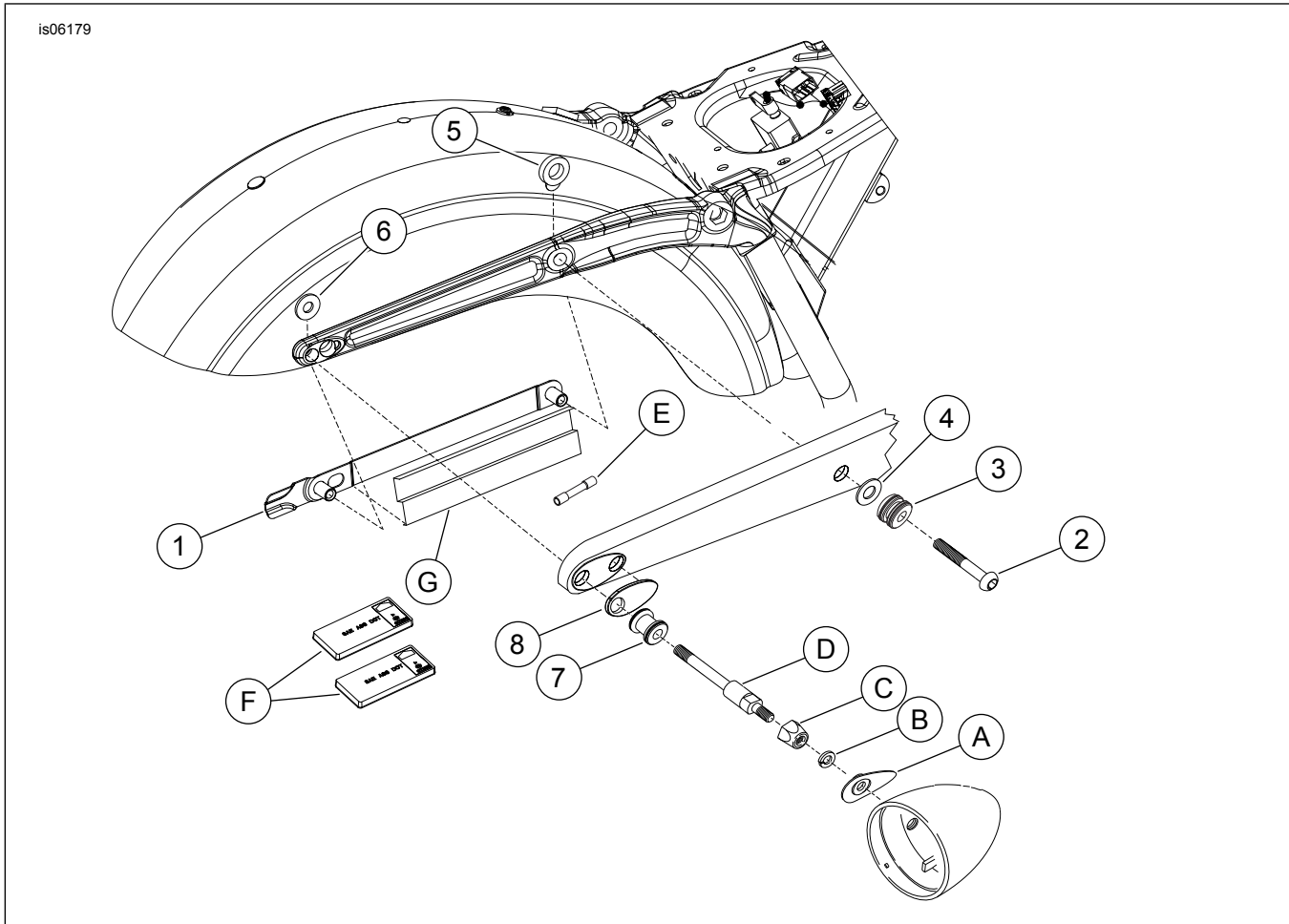


Figure 1. Service Parts: Dyna Docking Hardware Kit

Table 1. Service Parts Table

Kit	Item	Description (Quantity)	Part Number
Kit 54097-10 Docking Hardware	1	Rear fender mounting bracket (2)	60937-10
	2	Hex socket button head screw 3/8-16 x 2 in. chrome (2)	4999
	3	Front docking point (2)	53697-06
	4	Washer, 0.050 in. thick (2)	6379W
	5	Spacer, 0.250 in. thick (2)	6986
	6	Washer, 0.120 in. thick (2)	6984
	7	Rear docking point (2)	53684-96A
	8	Recess cover (2)	54103-10

Table 1. Service Parts Table

Kit	Item	Description (Quantity)	Part Number
Items mentioned in text, but not included in kit:			
	A	Turn signal recess cover (2)	
	B	Lockwasher (2)	
	C	Jam nut, turn signal stalk (2)	
	D	Turn signal stalk (2)	
	E	Butt splice wire connector, 18-22 GA. (6)	
	F	Red reflector (2)	
	G	Wire channel (2)	