



# INSTRUCTIONS

J04081

2006-04-16



## CENTERLINE SHIFTER PEG

### GENERAL

#### Kit Numbers

49268-07

#### Models

**Shifter Peg Kit, Part Number 49268-07** is designed for installation on all model Harley-Davidson motorcycles except 2006 and later VRSCA and 2006 and later Dyna models.

#### Kit Contents

See Figure 1 and Table 1.

### INSTALLATION

#### Shifter Peg

1. Remove and discard the original equipment shifter peg. If needed, use a heat gun to apply heat to the shift lever and shifter peg threads to aid in peg removal.

2. See Figure 1. On the **new** footpeg assembly, remove 10-32 flat head screw (4), shift peg cover (3) and shifter peg insert tread from the shifter peg pedal (1).

#### NOTE

See Figure 1. When installing the shifter peg pedal (1) to the shift lever, the lockwasher (6) should be installed between the shifter peg pedal and shift lever.

3. Using the screw (5) and lockwasher (6), attach the shifter peg pedal (1) to the shift lever. Tighten the screw to 11-15 ft-lbs (15-20 Nm).
4. Install the shift peg cover (3) into the shifter peg insert tread (2) and place into the shifter peg pedal (1). From the bottom, install screw (4) into shift peg cover and tighten to 15-25 in-lbs (1.6-2.8 Nm).

### SERVICE PARTS

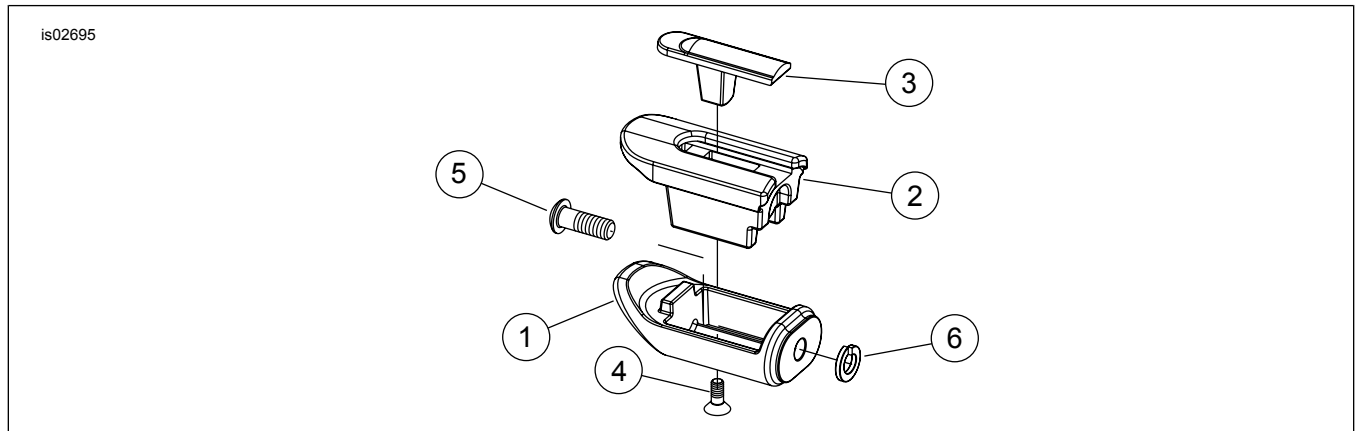


Figure 1. Service Parts: Centerline Shifter Peg Kit

Table 1. Service Parts Table

Item	Description (Quantity)	Part Number
1	Pedal, shifter peg	50858-07
2	Tread, shifter peg insert	50857-07
3	Cover, shift peg	50861-07
4	Screw, 10-32, flat head	42534-82
5	Screw, button head, 5/16-24 x 7/8 inch, zinc plated	4387
6	Lockwasher, 5/16 inch, zinc plated	94081-90T