



# INSTRUCTIONS

J05191

2010-04-23



## RIDER CUP HOLDER

### GENERAL

#### Kit Number

50700001, 50700002, 57478-11

#### Models

For model fitment information, see the P&A Retail Catalog or the Parts and Accessories section of [www.harley-davidson.com](http://www.harley-davidson.com) (English only).

#### Additional Parts Required

Loctite® 220™ Blue Threadlocker

#### Kit Contents

See Figure 1 and Table 1.

### INSTALLATION

1. See Figure 1 and Table 1. Install clamp (7, 8 or 9 depending on motorcycle model) to the left frame downtube. Position the clamp so that it butts up against the frame casting. Install clamp backplate with four screws. Tighten screws enough to hold the clamp in place.
2. Install the cup (1) to the arm using screw (3).
3. Apply Loctite 220 Blue Threadlocker to threads of screw (6). Install the cup holder arm (4) to the clamp using washer (5) and screw (6).
4. Adjust the cup holder assembly so that the clamp is up against the frame casting and within easy reach when sitting on the motorcycle.
  - Tighten four frame clamp screws (2) to 10.8 N·m (8 ft-lbs).
  - Tighten screw (6) to 27.1 N·m (20 ft-lbs).
  - Tighten cup holder screw (3) to 16.3 N·m (12 ft-lbs).

### SERVICE PARTS

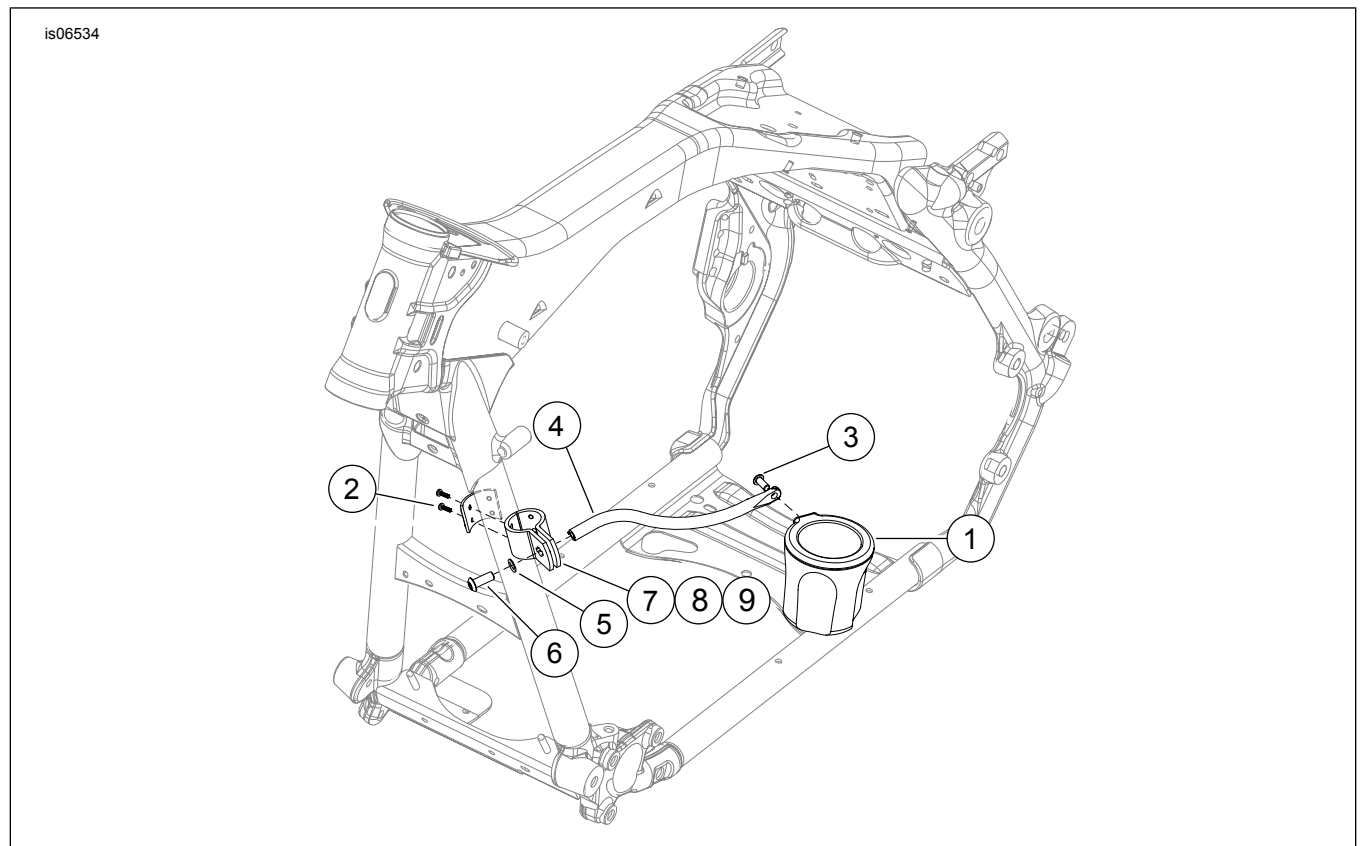


Figure 1. Service Parts: Rider Cup Holder

**Table 1. Service Parts Table**

<b>Item</b>	<b>Description (Quantity)</b>	<b>Part Number</b>
1	Cup holder	57482-11
2	Screw (4)	Not Sold Separately
3	Hex socket button head screw	4092
4	Arm, rider cup holder	57481-11
5	Washer	6379W
6	Hex socket button head cap screw	94403-92T
7	Clamp assembly, 1.25 inch	57479-11
8	Clamp assembly, 1.375 inch	57480-11
9	Clamp assembly, 1.50 inch	50700003