



INSTRUCTIONS

J05104

2013-07-29



ONE-PIECE DETACHABLE SISSY BAR UPRIGHTS

GENERAL

Kit Number

52760-11, 52828-11

Models

For model fitment information, see the P&A Retail Catalog or the Parts and Accessories section of www.harley-davidson.com (English only).

Installation Requirements

Separate purchase and installation of additional parts or accessories may be required for proper installation of this kit on your model motorcycle. See the P&A Retail Catalog or the Parts and Accessories section of www.harley-davidson.com (English only) for a list of required parts or accessories for your model.

Models equipped with a center-mount license plate and fender-mounted reflectors require installation of a red (Part No. 67900223) or amber (Part No. 67900224) reflector kit. Select the appropriate kit based on the color reflector that was previously installed on the fender.

⚠ WARNING

Federal Motor Vehicle Safety Standard (FMVSS) 108 requires motorcycles to be equipped with rear and side reflectors. Be sure rear and side reflectors are properly mounted. Poor visibility of rider to other motorists can result in death or serious injury. (00336b)

⚠ WARNING

Rider and passenger safety depend upon the correct installation of this kit. If the procedure is not within your capabilities or you do not have the correct tools, have a Harley-Davidson dealer perform the installation. Improper installation of this kit could result in death or serious injury. (00308b)

Kit Contents

See Figure 3 and Table 1.

INSTALLATION

Install Docking Point Kit and Turn Signal Relocation Kit

Install the docking point kit and turn signal relocation kits. Follow the kit instructions.

Passenger Upright Installation

1. See Figure 1. Stand behind the motorcycle, and place (10) the front upright notches (2) into the front docking points (3).

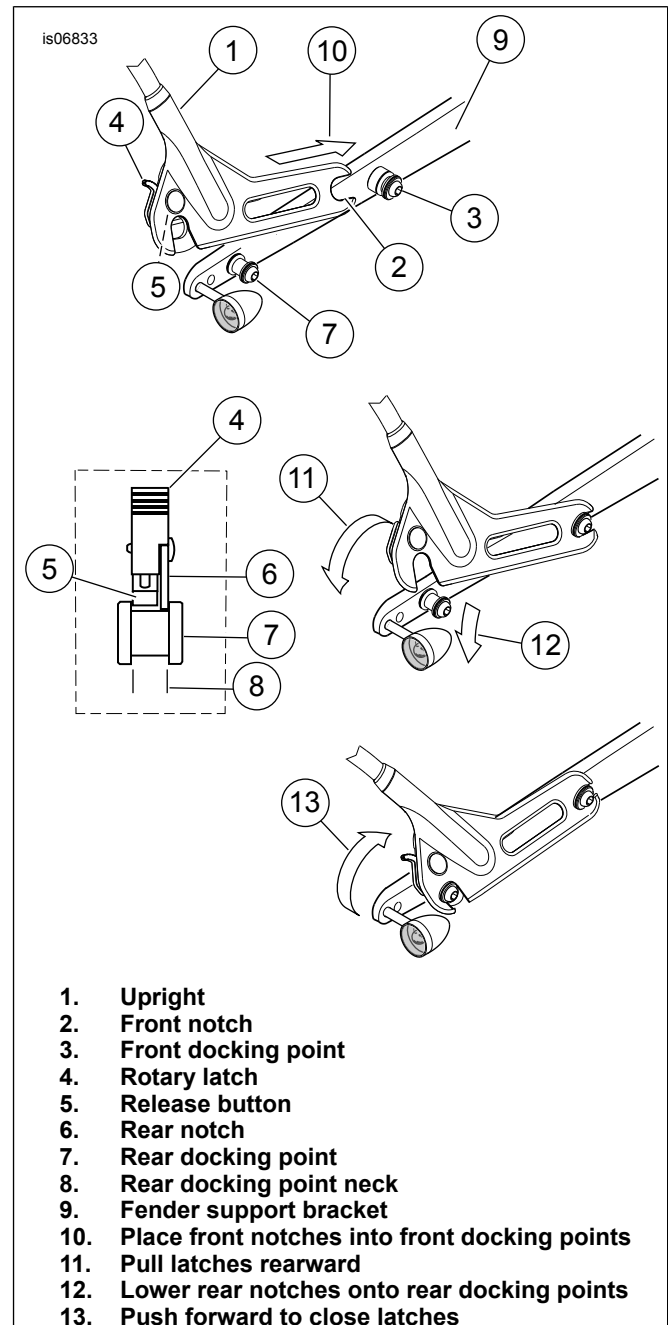


Figure 1. Detachable Upright

1. Upright
2. Front notch
3. Front docking point
4. Rotary latch
5. Release button
6. Rear notch
7. Rear docking point
8. Rear docking point neck
9. Fender support bracket
10. Place front notches into front docking points
11. Pull latches rearward
12. Lower rear notches onto rear docking points
13. Push forward to close latches

- See Figure 2. Check for correct notch engagement.

NOTE

Make sure the sideplate notches engage the docking points properly to prevent damage to the rear docking points.

- See Figure 1. Pull (11) the rotary latches (4) into to the rearward position. Align the latches over the rear docking points (7). Make sure the latches and rear notches (6) fit into the neck (8) of the rear docking points.

NOTE

If necessary, squeeze or spread the upright to fit on to the docking points.

- Push downward (12) on the sideplates, and close the rotary latches by pushing (13) the latch levers forward. The latch clicks when in place. **If the latch does not close, do not force it.**

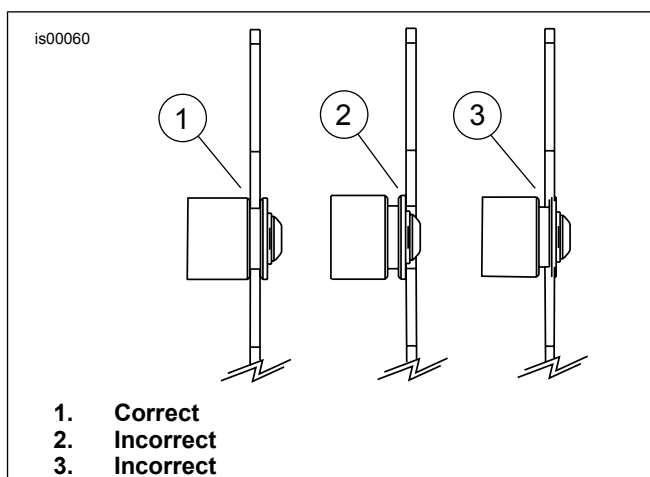


Figure 2. Upright Notch to Docking Point Engagement

⚠ WARNING

After installing sissy bar/sideplate assembly, pull upward to be sure it is locked in position. While riding, a loose sissy bar/sideplate assembly can shift causing loss of control, which could result in death or serious injury. (00388a)

- See Figure 2. Confirm that notches are engaged.

REMOVAL

To remove the upright, press the release buttons and pull the rotary latches rearward. Carefully lift the rear of the sideplates up, and pull the upright out of the front docking points.

SERVICE PARTS

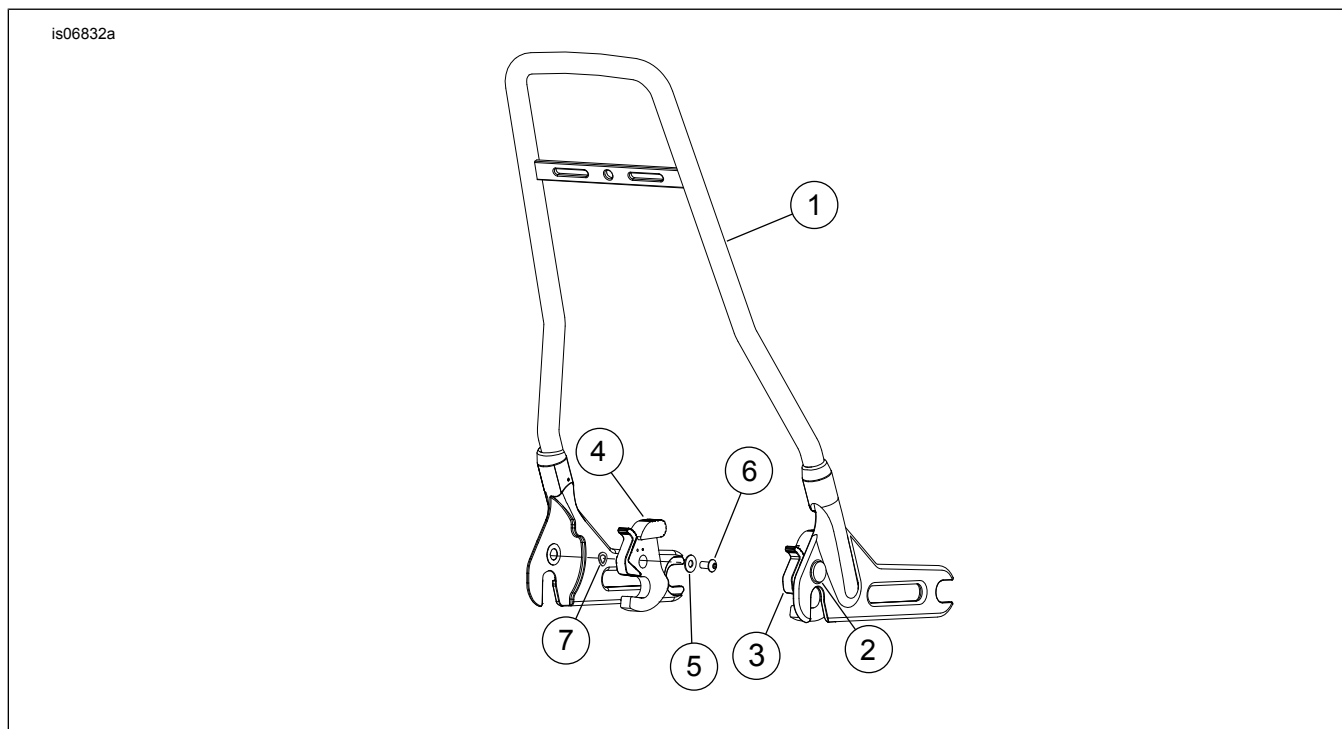


Figure 3. Service Parts: Detachable Sissy Bar and Rear Bracket License Plate Assembly

Table 1. Service Parts Table

Item	Description (Quantity)	Part Number
1	Detachable upright	Not Sold Separately
2	Stud, pivot (2)	Not Sold Separately
3	Latch assembly, (includes items 5-7)	12600021
4	Latch assembly, (includes items 5-7)	12600022
5	Flatwasher	Not Sold Separately
6	Button head screw	Not Sold Separately
7	Wave spring washer	Not Sold Separately