



# INSTRUCTIONS

J05481

2011-07-08



## SCREAMIN' EAGLE TWIN CAM 4.375" STROKE FLYWHEEL KIT

### GENERAL

#### Kit Numbers

23601-05A

#### Models

For model fitment information, see the P&A Retail Catalog or the Parts and Accessories section of [www.harley-davidson.com](http://www.harley-davidson.com) (English only).

#### Kit Contents

Table 1. Kit Contents

Description (Quantity)	Part Number
Flywheel assembly (1)	Not Sold Separately

#### Additional Parts Required

##### NOTE

*SE Lefty Bearing Kit (P/N 24004-03B) must be used on the primary side of flywheel. Follow instructions included with bearing assembly.*

*If an SE crankcase is used, the lefty main bearing is already installed. However, an additional thrust washer (Part Number 8972) will be required.*

*SE Lefty bearing Kit, (Part Number 24004-03B)*

##### ⚠ WARNING

Rider and passenger safety depend upon the correct installation of this kit. Use the appropriate service manual procedures. If the procedure is not within your capabilities or you do not have the correct tools, have a Harley-Davidson dealer perform the installation. Improper installation of this kit could result in death or serious injury. (00333b)

##### NOTE

*This instruction sheet references service manual information. A service manual for your model motorcycle is required for this installation and is available from a Harley-Davidson Dealer.*

##### NOTE

*Harley-Davidson motorcycles equipped with some Screamin' Eagle® high-performance parts may not be used on public roads and in some cases must be restricted to closed course competition. This engine related performance part is intended for racing applications and is not legal for sale or use in California on pollution controlled motor vehicles.*

##### ⚠ WARNING

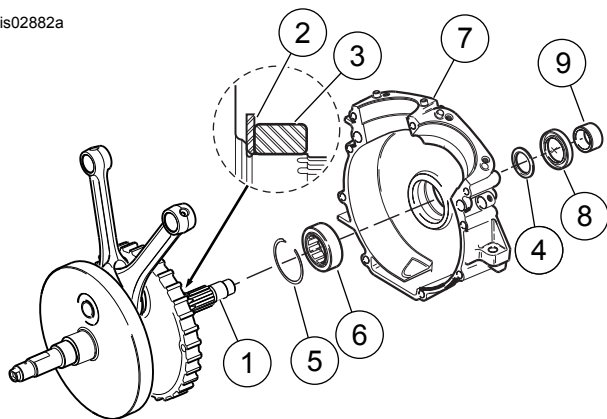
When servicing the fuel system, do not smoke or allow open flame or sparks in the vicinity. Gasoline is extremely flammable and highly explosive, which could result in death or serious injury. (00330a)

### INSTALLATION

#### ⚠ WARNING

Disconnect negative (-) battery cable first. If positive (+) cable should contact ground with negative (-) cable connected, the resulting sparks can cause a battery explosion, which could result in death or serious injury. (00049a)

1. Disconnect the battery, negative cable first.
2. Follow instructions in applicable service manual and remove engine from chassis.
3. Refer to the ENGINE section in the service manual and follow steps to disassemble engine and remove crankshaft.
4. **For stock crankcases-** Refer to the service manual for removal and installation of the main bearing in the left crankcase half from the SE Lefty Bearing Kit. *The inner bearing race (3) and one thrust washer (2) will be discarded from the SE Lefty Bearing kit (see Figure 1), since the new flywheel comes with a race and thrust washer installed.* **For SE crankcases-** Use thrust washer (4) (Part Number 8972) purchased separately when installing flywheel in crankcase (see Figure 1).



1. Flywheel assembly (includes items 2 and 3)
2. Thrust washer
3. Bearing inner race (remove and replace)
4. Thrust washer (from Lefty Bearing Kit)
5. Bearing inner race (from Lefty Bearing Kit)
6. Lock Ring (from Lefty Bearing Kit)
7. Straight roller bearing (from Lefty Bearing Kit)
8. Crankcase (left side shown) (save existing parts)
9. Seal (purchased separately)
10. Spacer (save existing part)

Figure 1. Bearing and Thrust Washer Installation

## OPERATION

1. Refer to BREAK-IN RIDING RULES in the owner's manual for instructions to break-in a new engine.