



INSTRUCTIONS

J04120

2017-10-30



DETACHABLE WINDSHIELD KITS

GENERAL

Kit Number

57331-07, 57400315

Kit Contents

See Figure 3 and Table 1.

INSTALLATION

⚠ WARNING

Rider and passenger safety depend upon the correct installation of this kit. If the procedure is not within your capabilities or you do not have the correct tools, have a Harley-Davidson dealer perform the installation. Improper installation of this kit could result in death or serious injury. (00308b)

NOTE

Cover front fender and front of fuel tank with clean shop towels to prevent scratching. Damage to the finish could result.

Preparation

1. See Figure 1. Remove windshield sub-assembly from packaging and place face down on a clean, soft surface with mount brackets facing upward.
2. Separate the four clamps, shoulder bolts, cup washers and Belleville washers from packaging.

Assemble Clamps to Windshield

1. See Figure 2. Place one Belleville washer on a shoulder bolt so that cupped side of washer is facing away from bolt head.

⚠ WARNING

The cupped side of the Belleville (cone) washers must face each other and sandwich the windshield mount brackets at each mount point. Failure to orient washers correctly can reduce windshield's ability to break away in a collision, which could result in death or serious injury. (00422b)

2. With bolt threads facing outward, insert bolt with washer through one of the bracket holes.
3. Install a Belleville washer with cupped side of washer facing windshield bracket.
4. Install cup washer with cup side facing Belleville washer.

5. Using a 1/4 inch hex wrench, thread shoulder bolt into clamp with jaws facing upward. Tighten shoulder bolt so clamp remains secure when handled.
6. See Figure 2. Assemble second hardware stack.
7. Loosely thread shoulder bolt into clamp.
8. Spread Belleville washers apart and slide assembly into mounting slot of windshield bracket. Insert shoulder portion of bolt to depth of slot.
9. Tighten shoulder bolt so clamp remains secure when handled.
10. Repeat above installation procedures for opposite bracket clamps.

11.

NOTE

Before installing windshield, top and bottom clamps must be aligned.

Using a straight edge placed between the upper clamps along the face of the rubber clamp gasket, align the clamps. Tighten shoulder bolts to 60 **in-lbs** (6.8 Nm). Repeat alignment procedure for lower clamps and tighten to 60 **in-lbs** (6.8 Nm).

NOTE

Clamps can be rotated a small amount after tightening the shoulder bolt to help final clamp alignment.

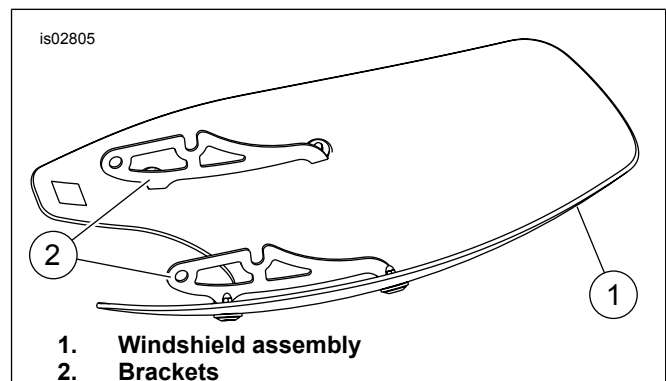


Figure 1. Windshield Mounting Brackets

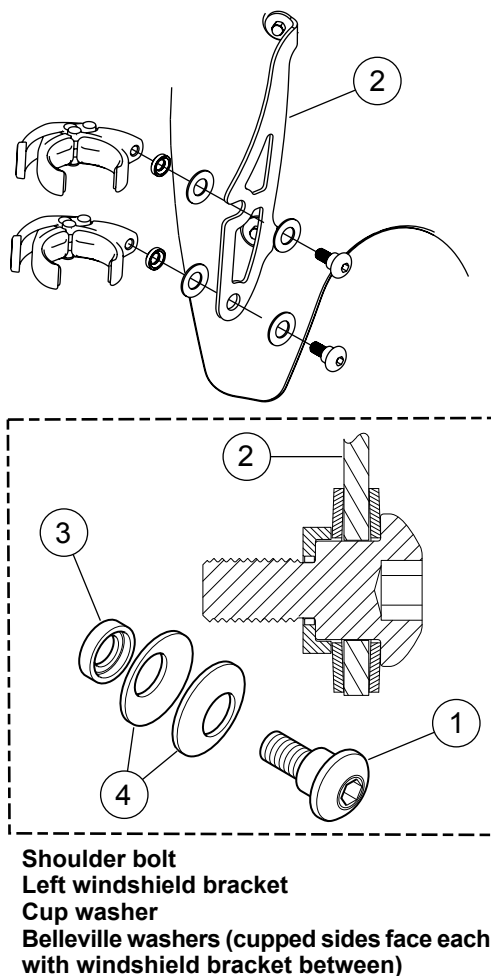


Figure 2. Windshield Mounting Clamp

Install Windshield

If equipped, remove speed screen by gently pulling on speed screen near the barb/grommet attachment points. Store speed screen.

NOTE

Keep front wheel straight to prevent brackets from scratching fuel tank.

1. Make sure all clamps are "open". Bring windshield (with clamp side toward motorcycle) to front of motorcycle.

NOTE

Take care not to scratch headlamp housing with clamps while positioning windshield on front fork.

2. Straddle front fender and center windshield around headlamp while positioning clamps onto front fork.
3. Starting at the bottom of either side, close each clamp.

NOTE

If interference occurs, adjust windshield as needed until proper clearance is obtained. Have experienced Harley-Davidson

service personnel correct any problems before riding with this accessory installed.

Remove and Store Windshield

To remove windshield, open four clamps, in any sequence, and remove windshield. Take care to not scratch headlamp housing or fuel tank as noted during installation.

When storing windshield, place in a location where windshield clamps will receive the greatest protection. Keep from locations where the windshield may be bumped or dropped. Do not stack anything on top of assembly.

Before installation after any storage period, inspect clamps and hardware for fastener preload and cleanliness. Verify each clamp can be cycled open and closed freely and is free of any debris.

CARE AND CLEANING

NOTE

Sunlight reflections off inside surface of windshield can cause extreme heat build-up on motorcycle instruments. Exercise care in parking. Park facing the sun, place an opaque object over instruments, or adjust windshield to avoid reflections.

NOTICE

Polycarbonate windshields/wind deflectors require proper attention and care to maintain. Failure to maintain polycarbonate properly can result in damage to the windshield/wind deflector. (00483e)

NOTICE

Use only Harley-Davidson recommended products on Harley-Davidson windshields. Do not use harsh chemicals or rain sheeting products, which can cause windshield surface damage, such as dulling or hazing. (00231c)

- Do not use benzene, paint thinner, gasoline or any other type of harsh cleaner on the windshield. Doing so will damage the surface.
- Do not clean polycarbonate in hot sun or high temperature.
- Powdered, abrasive or alkaline cleanser will damage the windshield.
- Sunlight reflections off of the inside curvature of a windshield can, at certain times of the day, cause extreme heat build-up on motorcycle instruments. Exercise care in parking. Park facing the sun, place an opaque object over the instruments, or adjust the windscreen/windshield to avoid reflections.
- Never scrape windshield with a razor blade or other sharp instruments. Permanent damage will result.
- Do not use benzene, paint thinner, gasoline, lubricants (including Armorall®), or other cleaning agents on rubber bushings or rubber clamp gaskets. They will damage the rubber surfaces.

NOTE

Covering the windshield with a clean, wet cloth for about 15 minutes before washing makes dried bug removal easier.

SERVICE PARTS

1137091

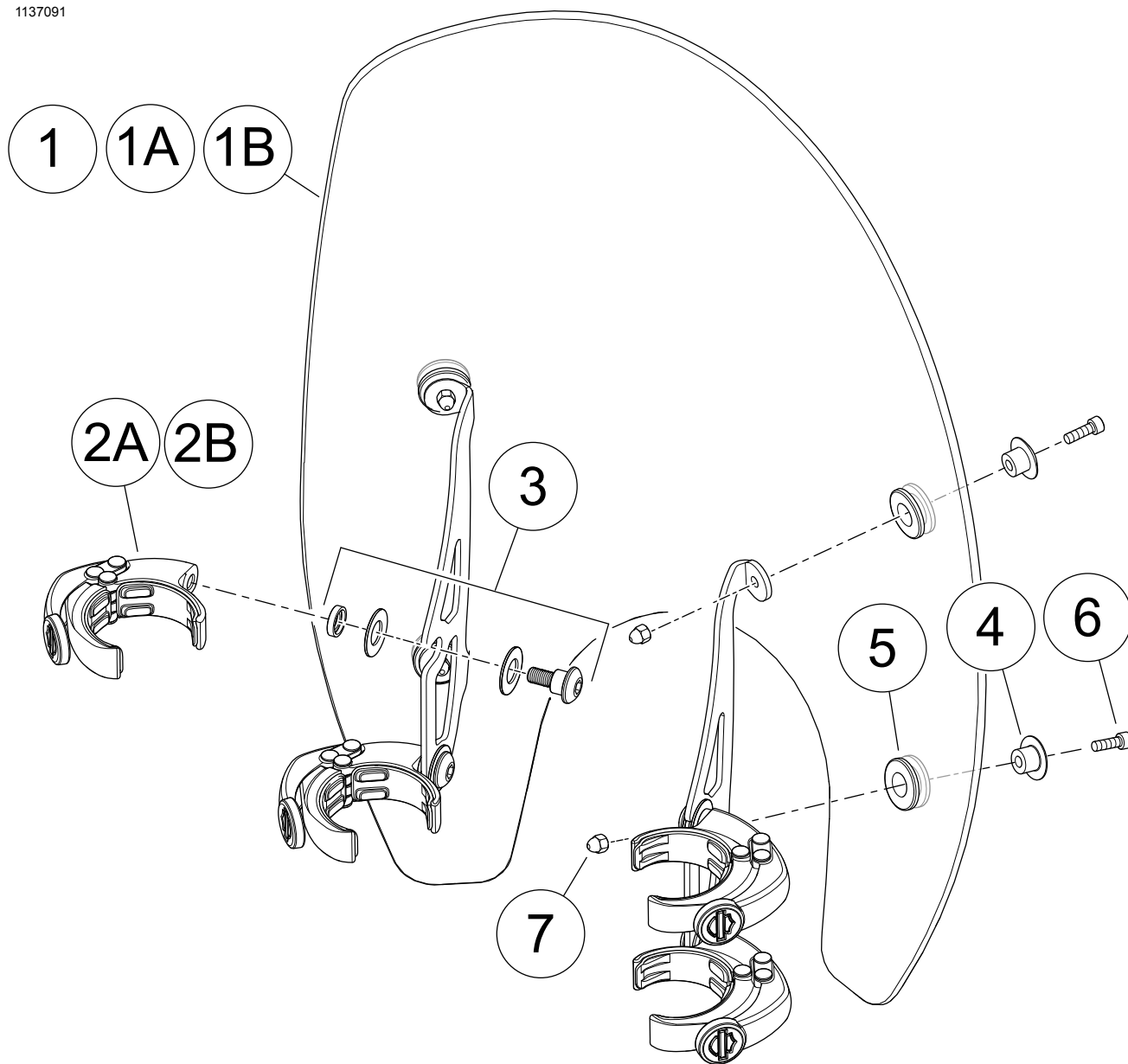


Figure 3. Service Parts: Super Sport Quick-Release Windshield Kit

Table 1. Service Parts Table

Item	Description (Quantity)	Part Number
1	Windshield assembly (includes item 4 thru 7)	Not Sold Separately
1A	Service windshield (replacement for 57331-07)	57332-07
1B	Service windshield (replacement for 57400315)	57400317
2A	55 mm quick clamp assembly (4) (replacement for 57400315)	57287-07
2B	52 mm quick clamp assembly (4) (replacement for 57331-07)	57285-07
3	Mounting hardware kit (4)	58790-04
4	Top mount cap (4)	57818-01
5	Grommet (4)	11564
6	Screw, M5 x 0.8 x 16 mm (4)	3080M
7	Nut, acorn, M5 x 0.8 (4)	7154M