



# INSTRUCTIONS

J04841

2008-12-16



## SCREAMIN' EAGLE PRO TWIN CAM ACR PERFORMANCE CYLINDER HEADS

### GENERAL

#### Kit Number

17165-08A (Black)

#### Models

For model fitment information, the P&A Retail Catalog or the Parts and Accessories section of [www.harley-davidson.com](http://www.harley-davidson.com) (English only).

#### Additional Parts Required

This kit requires an ACR Overlay Wire Harness Kit (70623-06). This kit is available from a Harley-Davidson dealer.

Top end overhaul gasket kit (17052-99B)

#### ⚠ WARNING

**Rider and passenger safety depend upon the correct installation of this kit. Use the appropriate service manual procedures. If the procedure is not within your capabilities or you do not have the correct tools, have a Harley-Davidson dealer perform the installation. Improper installation of this kit could result in death or serious injury. (00333b)**

#### NOTE

*This instruction sheet references service manual information. A service manual for your model motorcycle is required for this installation and is available from a Harley-Davidson dealer.*

### Kit Contents

See Figure 1 and Table 1.

#### NOTE

*This kit is intended for High Performance or Racing applications only and is not legal for sale or use on pollution controlled motor vehicles. This kit may reduce or void the limited vehicle warranty. Engine related performance parts are intended for the experienced rider only.*

### REMOVAL

#### Prepare for Service

1. Position motorcycle on a suitable lift.

#### NOTE

*If vehicle is equipped with Harley-Davidson Smart Security System, see Owner's Manual for instructions to disarm the system.*

2. Remove seat according to the instructions in the service manual.

#### ⚠ WARNING

**When servicing the fuel system, do not smoke or allow open flame or sparks in the vicinity. Gasoline is extremely flammable and highly explosive, which could result in death or serious injury. (00330a)**

3. Remove fuel tank according to the instructions in the service manual.
4. Remove main fuse. Refer to service manual for your motorcycle.

### Remove Engine Components

1. Remove existing air cleaner assembly. Refer to AIR CLEANER REMOVAL in service manual.
2. Remove existing exhaust system. Refer to EXHAUST SYSTEM REMOVAL in service manual.
3. Remove engine from chassis following the instructions in the service manual.
4. Disassemble cylinder heads from engine. Refer to appropriate ENGINE sections in service manual.

### INSTALLATION

#### Install Engine Components

1. Install cylinder heads to engine. Refer to appropriate ENGINE section in service manual.
2. Install engine in chassis following the instructions in the service manual.
3. Install exhaust system. Refer to EXHAUST SYSTEM INSTALLATION in service manual.
4. Install air cleaner assembly. Refer to AIR CLEANER INSTALLATION in service manual.

#### Install ACR Overlay Wire Harness

Refer to the instructions in the ACR Overlay Wire Harness Kit for installation.

#### Final Assembly

1. Install main fuse. Refer to service manual for your motorcycle.
2. Install fuel tank according to the instructions in the service manual.

3. Install seat according to the instructions in the service manual.

**⚠ WARNING**

After installing seat, pull upward on seat to be sure it is locked in position. While riding, a loose seat can shift causing loss of control, which could result in death or serious injury. (00070b)

**NOTICE**

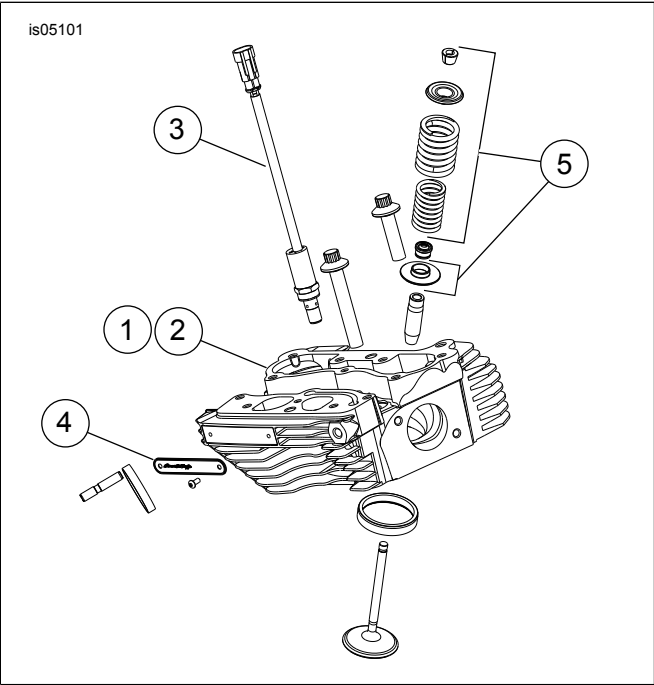
You must recalibrate the ECM when installing this kit. Failure to properly recalibrate the ECM can result in severe engine damage. (00399b)

4. Download the new ECM calibration using EFI Race Tuner Kit. Refer to Screamin' Eagle Pro Catalog or contact a Harley-Davidson dealer.
5. Start and run engine. Repeat several times to verify proper operation.

**Operation**

Refer to BREAK-IN RIDING RULES in the Owner's Manual for instructions to break-in the motorcycle.

**SERVICE PARTS**



**Figure 1. Service Kit: Screamin' Eagle Pro TC ACR Performance Cylinder Heads**

**Table 1. Service Parts**

Item	Description (Quantity)	Part Number
1	Cylinder head assembly, front, black	17413-08
2	Cylinder head assembly, rear, black	17414-08
3	Automatic compression release (ACR)	28861-07A
4	Medallion, cylinder head (2)	16897-07

**Table 1. Service Parts**

Item	Description (Quantity)	Part Number
5	Performance valve spring kit	18273-00

NOTES: For cylinder head assembly (1, 2) components, refer to FXDSE2 (99430-08) and 2008 FXSTSSE2 (99458-08) Parts Catalog for service part numbers (machined with seats and guides).