



# INSTRUCTIONS

J05569

2011-11-15



## SOFTAIL MID-FRAME AIR DEFLECTORS

### GENERAL

#### Kit Number

29200008A

#### Models

For model fitment information, see the P&A Retail Catalog or the Parts and Accessories section of [www.harley-davidson.com](http://www.harley-davidson.com) (English only).

#### Additional Parts Required

##### ⚠ WARNING

Rider and passenger safety depend upon the correct installation of this kit. Use the appropriate service manual procedures. If the procedure is not within your capabilities or you do not have the correct tools, have a Harley-Davidson dealer perform the installation. Improper installation of this kit could result in death or serious injury. (00333b)

##### NOTE

This instruction sheet references service manual information. A service manual for your model motorcycle is required for this installation and is available from a Harley-Davidson Dealer.

#### Kit Contents

See Figure 4 and Table 1.

### INSTALLATION

##### ⚠ WARNING

To prevent accidental vehicle start-up, which could cause death or serious injury, disconnect negative (-) battery cable before proceeding. (00048a)

- See the owner's manual. Remove the seat and disconnect the battery negative (-) cable.
- See Figure 1. Note ground connection locations. Remove two screws and move aside the ground bracket and ground connections from the ground location (2).
- See Figure 1. Install mounting bracket as follows:
  - Remove the right oil tank mounting screw (1).
  - See Figure 2. Install the right side mounting bracket (3) and previously removed oil tank mounting screw (1). Tighten screw finger-tight.
  - Repeat step for the left side mounting bracket (2).
- See Figure 4. Install the crossbar to the mounting bracket as follows:
  - Install set screw (8) into the lock plate (4). The bottom of the set screw should be flush with the bottom of the lock plate weld nut.
  - Loosely install the jam nut (9) onto the set screw.
  - Slide the lock plate assembly through the frame gap with the set screw positioned inside the frame tube.
  - Position the crossbar beneath the frame and mounting brackets.
  - Catch the crossbar with the lock plate. Temporarily secure in place with two screws (7) at the mounting brackets.

NOTE

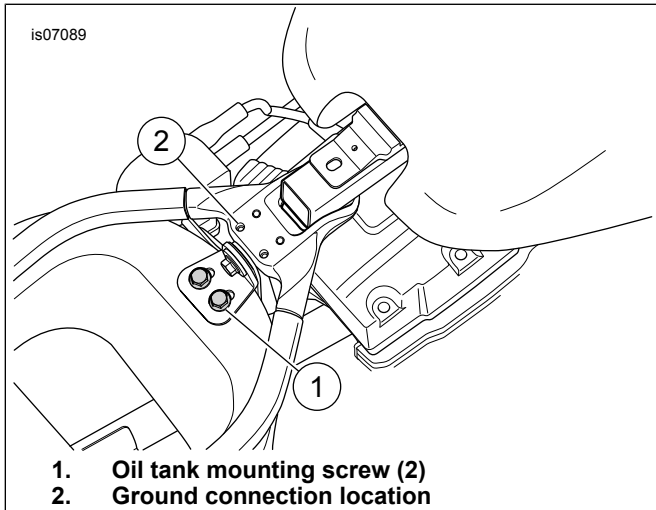
*It may be necessary to loosen the screws at the oil tank to slide the deflectors into position.*
- Install the mid-frame air deflectors to the mounting brackets as follows:
  - Remove screw (7) from the right mounting bracket and crossbar without changing the alignment of the bracket and crossbar.
  - See Figure 3. Position the right side mid-frame air deflector (2) on the mounting bracket and crossbar and secure with two screws (3). Tighten screws finger-tight.
  - Repeat step for the left side mid-frame air deflector (1).
- Align the mid-frame air deflectors along the centerline of the frame and check for clearance to all surrounding components. Tighten the screws as follows:
  - Tighten oil tank mounting screws to 16–20 N·m (12–15 ft-lbs).
  - Tighten mid-frame air deflector screws to 7.3–8.5 N·m (65–75 in-lbs).
  - Tighten the lock plate set screw until finger-tight, then tighten an additional 1-1/2 turns. Hold the set screw in place and secure with the jam nut.
- Install ground bracket and all ground connections to frame and secure with two previously removed screws.
- See owner's manual and connect battery negative (-) cable.



**▲ WARNING**

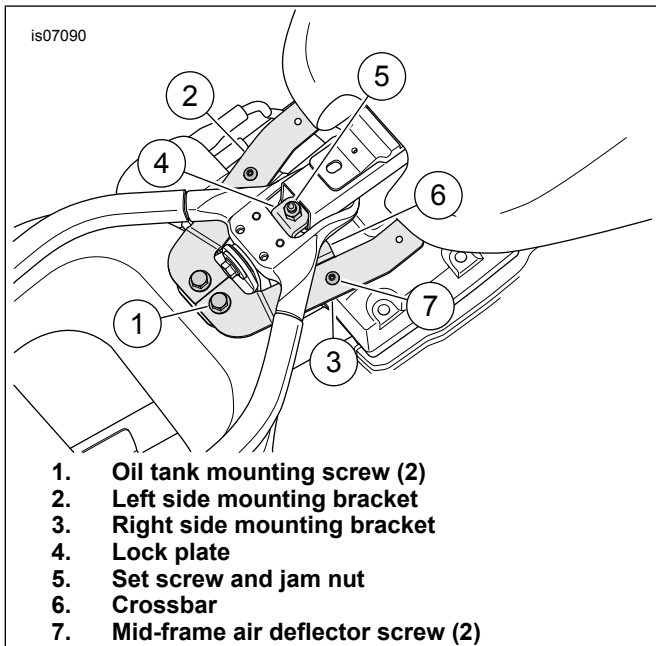
After installing seat, pull upward on seat to be sure it is locked in position. While riding, a loose seat can shift causing loss of control, which could result in death or serious injury. (00070b)

9. See owner's manual and install the seat.



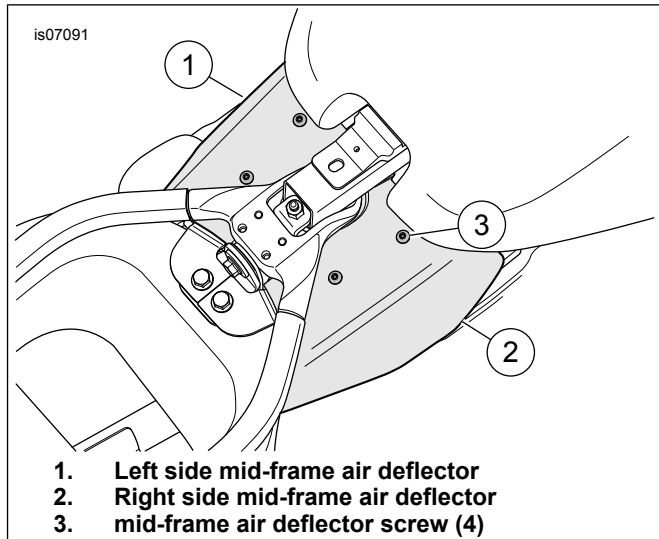
- 1. Oil tank mounting screw (2)
- 2. Ground connection location

Figure 1. Oil Tank Mounting Screws



- 1. Oil tank mounting screw (2)
- 2. Left side mounting bracket
- 3. Right side mounting bracket
- 4. Lock plate
- 5. Set screw and jam nut
- 6. Crossbar
- 7. Mid-frame air deflector screw (2)

Figure 2. Install Mounting Brackets and Crossbar



- 1. Left side mid-frame air deflector
- 2. Right side mid-frame air deflector
- 3. mid-frame air deflector screw (4)

Figure 3. Install Mid-Frame Air Deflectors

**SERVICE PARTS**

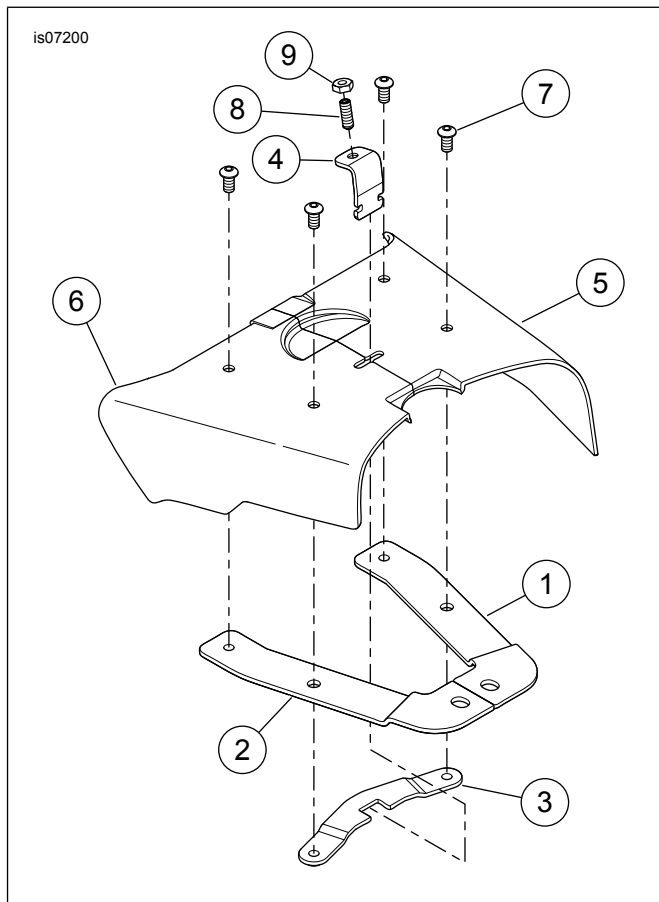


Figure 4. Service Parts: Softtail Mid-Frame Air Deflectors

Table 1. Service Parts

Item	Description (Quantity)	Part Number
1	Mounting bracket, right	Not Sold Separately
2	Mounting bracket, left	Not Sold Separately
3	Crossbar, mounting	Not Sold Separately
4	Lock plate	Not Sold Separately
5	Mid-frame deflector, right	29200009
6	Mid-frame deflector, left	29200010

**Table 1. Service Parts**

<b>Item</b>	<b>Description (Quantity)</b>	<b>Part Number</b>
7	Button head screw, SS, 1/4-20 x 0.5 in (4)	Not Sold Separately
8	Set screw, 1/4-20 x 0.75 in	3278
9	Jam nut, 1/4-20 in	7689W