



# INSTRUCTIONS

J05227

2010-12-22



## TRIKE REPLACEMENT BODY (MIDSECTION) KITS

### GENERAL

#### Kit Numbers

83000001CPC, 83000001CWA, 83000001CYS, 83000001DCK, 83000001DH, 83000001DJF, 83000001GY, 83000001QH, 83000002CYS, 83000002DH

#### Models

These kits fit 2009-2010 FLHTCUTG and FLHXXX models.

#### Additional Parts and Supplies Required

If **studs**, nuts and washers are used to attach the current rear fenders to the body, an appropriate Trike Replacement Rear Fender Kit (see Table 4, Item K) will be required.

If **TORX head screws**, nuts and washers are used to attach the current rear fenders to the body, those fenders can be used with the **new** body.

If the original trunk lock mechanism U-clip is bent or damaged, obtain a new U-clip (Part No. 53868-06) for installation.

Loctite<sup>®</sup> 243 Threadlocker and Sealant - Blue (Part No. 99642-97), Electrical Contact Lube (Part No. 99861-02) or equivalent, and Harley<sup>®</sup> Lube (Part No. 94968-09) or equivalent are required for the proper installation of this kit.

These items are available from a Harley-Davidson dealer.

**The help of an assistant** will be needed for portions of the disassembly and assembly procedures.

#### ▲ WARNING

**Rider and passenger safety depend upon the correct installation of this kit. Use the appropriate service manual procedures. If the procedure is not within your capabilities or you do not have the correct tools, have a Harley-Davidson dealer perform the installation. Improper installation of this kit could result in death or serious injury. (00333b)**

#### NOTE

- *This instruction sheet refers to service manual information. A service manual for **this year/model Trike** is required for removal procedures. A service manual for **2011 model year Trikes** is required for installation procedures.*
- *It is **strongly** recommended that a Harley-Davidson dealer perform this installation.*

#### Kit Contents

Each kit consists of a painted body (midsection) , trunk door , right and left side covers, and attaching parts to replace many of the original equipment (OE) components on 2009 and 2010 FLHTCUTG and FLHXXX model Trikes.

Some original items will be used with the replacement body. Retain ALL removed items and attaching parts for assembly to the new body unless instructed otherwise.

See Figure 1, Table 1, Table 2, Table 3 and Table 4.

### PREPARATION

#### NOTE

*For vehicles equipped with security siren:*

- *Verify that the Hands-Free Fob is present.*
- *Turn the ignition key switch to IGNITION.*

#### ▲ WARNING

**To prevent accidental vehicle start-up, which could cause death or serious injury, disconnect negative (-) battery cable before proceeding. (00048a)**

1. Refer to the service manual and follow the instructions to remove the seat and disconnect the negative (black) battery cable from the negative (-) battery terminal. Retain all seat mounting hardware.
2. Pull the left-side and right-side covers to remove. The side covers can be discarded.

### BODY (MIDSECTION) REMOVAL

#### NOTE

*Retain ALL removed items and attaching parts for assembly to the new body unless instructed otherwise.*

1. Open the vehicle trunk and Tour-Pak<sup>®</sup> (if equipped) and remove any items inside. Remove the trunk liners or mat.
2. Unplug the electrical, sound system and antenna connectors per service manual instructions.
3. Remove any previously installed Genuine Motor Parts or Accessories (or those from other sources) that are to be transferred to the **new** body per the instructions supplied with those items.
4. Follow service manual instructions to remove the fasteners retaining the body to the rear and intermediate frames.
5. With the help of an assistant, lift the body from the rear frame and set aside for disassembly.

### Disassembly

1. **For models WITH Tour-Pak:** Remove the Tour-Pak and rack from the body per service manual instructions. **For models WITHOUT Tour-Pak:** Remove the trim strips and gaskets from the body. Inspect the gaskets and rubber washers, and replace if damaged (gasket Part No. 8342, rubber washer Part No. 61121-04, purchased separately). Remove the antenna from the body side per service manual instructions. Inspect the gasket and replace if damaged (Part No. 8344, purchased separately).



#### NOTE

**For ALL models:** Make note of wire routings and mounting locations before removing the rear lighting harness from the original body and rear fenders.

2. Follow the body disassembly instructions in the service manual to remove any items applicable to the specific vehicle with the following exceptions:
  - a. If **studs**, nuts and washers are used to attach the current rear fenders to the body, removal of the rear fenders will not be necessary. If **TORX head screws**, nuts and washers are used to attach the current rear fenders to the body, remove the fenders for installation on the **new** body.
  - b. **For ALL applications:** The trunk door **seal** does not need to be removed from the body.

## INSTALLATION

### Body (Midsection) Assembly

#### NOTE

*Clean all residual threadlocking agent from original fasteners if being reused, and apply Loctite 243 - Blue before use in the new assembly.*

1. See Figure 1. Install the fenders to the **new** body per the instructions in the Rear Fender Kit (K) with the following exception:
  - **If installing new fenders:** DO NOT install the reflectors at this time.
2. Install the original rear lighting harness onto the **new** body and rear fenders following the wire routings and mounting notes made earlier and the instructions in the service manual.
3. Follow service manual instructions to install the tail lamps to the fenders.
4. **For models WITH Tour-Pak:** **For models WITHOUT Tour-Pak:**
  - a. Install the rack and Tour-Pak to the body per the instructions in the service manual.
  - b. Secure one end of the original ground strap (J) to the stud on the underside of the Tour-Pak mount reinforcement with a **new** hex locknut (22) from the kit and an original plain washer (I). Tighten the locknut to 10.8–13.5 N·m (96–120 **in-lbs**).
  - c. Install the trim strips to the top of the body per service manual instructions, using saved or new rubber washers and gaskets.
  - d. Install the antenna to the side of the body per service manual instructions, using the saved or new gasket.
  - e. Secure the ground wire to the antenna base per service manual instructions.
5. **ALL models:** With the help of an assistant, follow service manual instructions to set the **new** body onto the rear frame.

6. Connect the tail lamp harnesses per service manual instructions.
7. Feed the license lamp branch of the harness (and antenna lead on FLHXXX models) into the trunk and install the original grommet at the trunk wiring hole.
8. **For models WITHOUT Tour-Pak:** Place the original ground plate (G) in the trunk
9. **ALL models:** Initially secure the body to the rear and intermediate frame sections following the sequence shown in the service manual, using the fasteners listed below. DO NOT fully tighten at this time.
  - **Models WITH Tour-Pak:** **Floor (inside)**, four screws (24) and washers (25) from the kit. **Left front wall (inside)**, original ground stud (H) and washer (25) from the kit. **Right front wall (inside)**, screw (21) and washer (25) from the kit. **Lower front flange (outside)**, screw (48) and washer (23) from the kit.
  - **Models WITHOUT Tour-Pak:**
    - **Floor (inside)**, four screws (24) and washers (25) from the kit. **Front wall (inside)**, two screws (21) and washers (25) from the kit. **Lower front flange (outside)**, screw (48) and washer (23) from the kit.
10. **ALL models:** Tighten all fasteners per service manual specifications.
11. **For models WITH Tour-Pak:** Install a plain washer (16) from the kit onto the ground stud (H). Secure the loose end of the ground strap (J) to the ground stud with a **new** hex locknut (22) and plain washer (16) from the kit. Tighten the locknut to 19–23 N·m (14–17 **ft-lbs**) **For models WITHOUT Tour-Pak:** Secure the AM-FM antenna ground wire to the ground plate with the original truss head screw. Tighten the screw to 2.3–4.5 N·m (20–40 **in-lbs**). Install the mast and attach the antenna cable.

### Trunk Latch and Lockset Assembly

#### NOTE

*If the U-clip (F) from the original trunk lock assembly (E) is bent or damaged, obtain a new U-clip (Part No. 53868-06) from a Harley-Davidson dealer.*

1. See Figure 1. Examine the foam trunk lockset sealing washer (9) at the lock opening on the body, and replace if damaged. Follow service manual instructions to install the **new** latch assembly (26) to the body, with the following exceptions:
  - a. Position the **new** O-ring (39) from the kit around the lock opening in the latch assembly housing.
  - b. Install the latch housing assembly with four **new** TORX® screws (38).
  - c. Install the **new** latch cover (30) with two **new** flat head screws (37).
2. Install the original trunk lockset through the body and into the lock mechanism (27) in the latch housing assembly.

## Trunk Door Assembly

1. See Figure 1. Use two **new** nuts (47), and the original washers (C) and O-rings to assemble the original license plate lamp to the **new** trunk door assembly (11) per service manual instructions.
2. Assemble the original license plate bracket to the trunk door assembly with three original screws per service manual instructions. Install the license plate (if equipped).
3. **Loosely** install the **new** latch pin assembly (43) to the trunk door using three TORX screws (38).
4. Follow service manual instructions to install the left (A) and right (B) trunk door hinges to the door with the six original flat head screws (D).
5. Examine the trunk door seal (8) around the door opening, and replace if damaged.

### NOTE

*If a Trunk Interior Light Kit (Part No. 83946-11) is being installed, refer to the instructions in **that** kit for installation of components to the trunk door hinge.*

6. Use **new** lock nuts (47) and original washers (C) to fasten the trunk door hinges to the stud plates on the body. Lubricate the hinges with Harley® Lube (Part No. 94968-09) or equivalent.
7. Connect the license plate lamp connector, and capture the rear lighting harness under the retainer clips.
8. Follow service manual instructions to install one end of each lanyard (41) to the tabs on each side of the trunk opening, using the shoulder bolts (42) from the kit.

### NOTE

*Give the lanyards a 180 degree twist toward the trunk opening before installing the second bolt.*

9. Install the other ends of the lanyards to the trunk door with the remaining shoulder bolts from the kit.
10. Adjust the trunk door latch pin per service manual instructions.
11. Install the trunk door inner cover (40) with four TORX screws (38) per service manual instructions.

## Side Covers

See Figure 1. Remove the original side cover attaching hardware and install the **new** side covers per the instructions in the Side Cover Kit (17).

## Final Assembly

1. See Figure 1. Install the **new** vertical and bottom trunk liners (Items 19 and 20, FLHTCUTG) or original trunk mat (FLHXXX).
2. Plug in the remaining electrical connections, sound system connections and antenna connectors per service manual instructions.
3. Follow the body assembly instructions in the service manual to install any other items applicable to the specific vehicle.
4. Install any Genuine Motor Parts or Accessories (or those from other sources) that are being transferred from the original body per the instructions supplied with those items.
5. **For new fenders**, install the reflectors per the instructions in the fender kit.

## RETURN TO SERVICE

### NOTE

*Verify that the ignition key switch is in the OFF position **before** attaching the negative battery cable.*

1. Refer to the service manual and follow the instructions to attach the negative battery cable. Apply a light coat of Harley-Davidson electrical contact lubricant (Part No. 99861-02), petroleum jelly or corrosion retardant material to the negative battery terminal.

### ▲ WARNING

**After installing seat, pull upward on seat to be sure it is locked in position. While riding, a loose seat can shift causing loss of control, which could result in death or serious injury. (00070b)**

2. Refer to the service manual, and follow instructions to install the seat.

# SERVICE PARTS

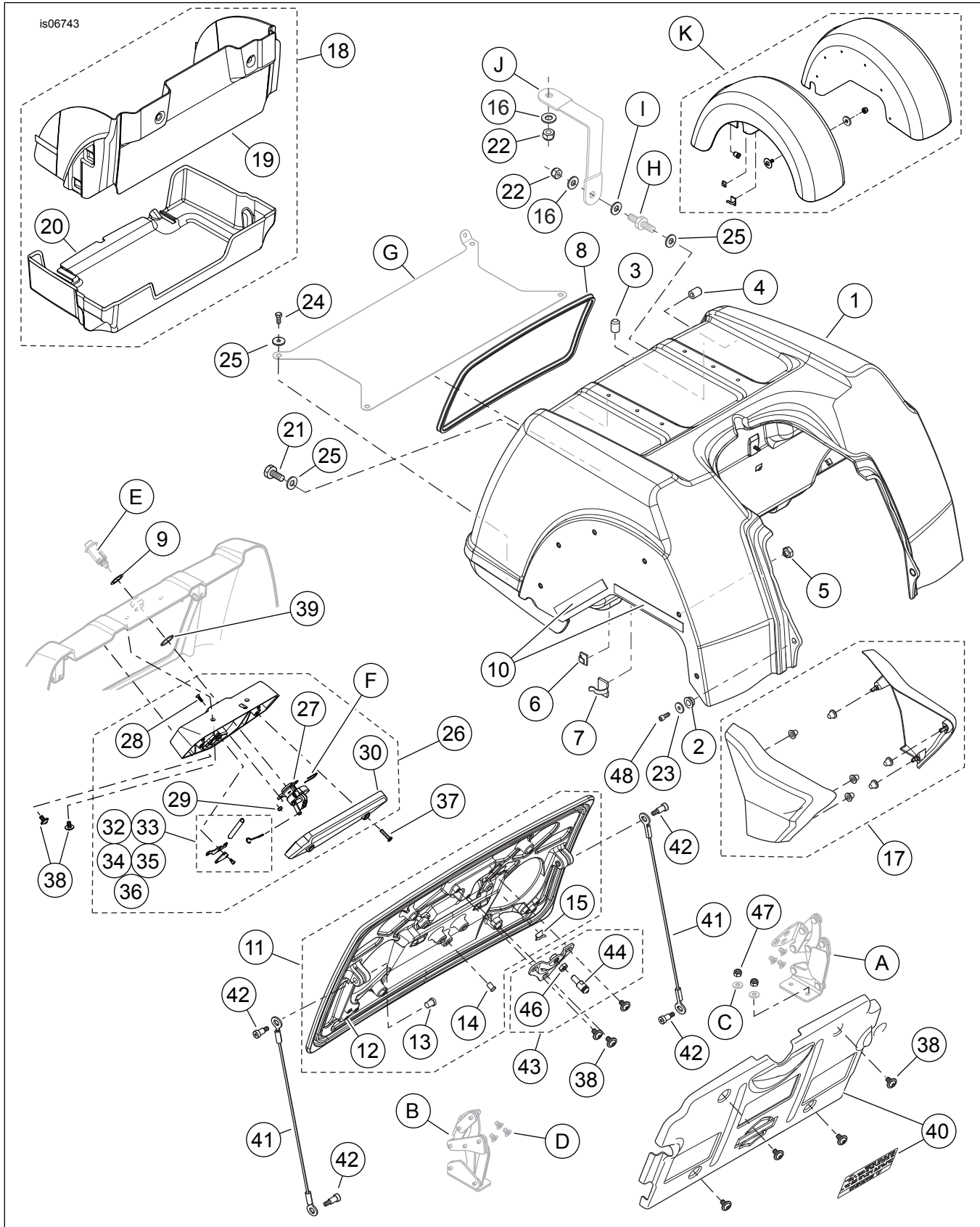


Figure 1. Service Parts, Trike Replacement Body Kits

## SERVICE PARTS

Table 1. Service Parts

Kit	Item	Description (Quantity)	Part Number
Kit 83000001CPC Dark Blue Pearl. FLHTCUTG models.	1	Body assembly, Dark Blue Pearl (includes Items 2-10)	83318-11CPC
	11	Trunk door assembly, Dark Blue Pearl (includes Items 12-15)	83341-11CPC
	16	Plain washer, 5/16 (2)	6702
	17	Side cover kit, Dark Blue Pearl	57200005CPC
	18	Trunk liner kit (includes Items 19 and 20)	83447-11
	21	Screw, hex head, 5/16-18 x 19 mm (0.75 in), with lock patch	3445
	22	Hex locknut, 5/16-18, with nylon insert (2)	7739
Kit 83000001CWA Flame Blue Pearl. FLHTCUTG models.	1	Body assembly, Flame Blue Pearl (includes Items 2-10)	83318-11CWA
	11	Trunk door assembly, Flame Blue Pearl (includes Items 12-15)	83341-11CWA
	16	Plain washer, 5/16 (2)	6702
	17	Side cover kit, Flame Blue Pearl	57200005CWA
	18	Trunk liner kit (includes Items 19 and 20)	83447-11
	21	Screw, hex head, 5/16-18 x 19 mm (0.75 in), with lock patch	3445
	22	Hex locknut, 5/16-18, with nylon insert (2)	7739
Kit 83000001CYS Red Hot Sunglo (2010). FLHTCUTG models.	1	Body assembly, Red Hot Sunglo (2010) (includes Items 2-10)	83318-11CYS
	11	Trunk door assembly, Red Hot Sunglo (2010) (includes Items 12-15)	83341-11CYS
	16	Plain washer, 5/16 (2)	6702
	17	Side cover kit, Red Hot Sunglo (2010)	57200005CYS
	18	Trunk liner kit (includes Items 19 and 20)	83447-11
	21	Screw, hex head, 5/16-18 x 19 mm (0.75 in), with lock patch	3445
	22	Hex locknut, 5/16-18, with nylon insert (2)	7739
Kit 83000001DCK Flame Blue Pearl/ Bright Silver Pearl. FLHTCUTG models.	1	Body assembly, Flame Blue Pearl (includes Items 2-10)	83318-11CWA
	11	Trunk door assembly, Flame Blue Pearl (includes Items 12-15)	83341-11CWA
	16	Plain washer, 5/16 (2)	6702
	17	Side cover kit, Flame Blue Pearl	57200005CWA
	18	Trunk liner kit (includes Items 19 and 20)	83447-11
	21	Screw, hex head, 5/16-18 x 19 mm (0.75 in), with lock patch	3445
	22	Hex locknut, 5/16-18, with nylon insert (2)	7739
Kit 83000001DH Vivid Black. FLHTCUTG models.	1	Body assembly, Vivid Black (includes Items 2-10)	83318-11DH
	11	Trunk door assembly, Vivid Black (includes Items 12-15)	83341-11DH
	16	Plain washer, 5/16 (2)	6702
	17	Side cover kit, Vivid Black	57200005DH
	18	Trunk liner kit (includes Items 19 and 20)	83447-11
	21	Screw, hex head, 5/16-18 x 19 mm (0.75 in), with lock patch	3445
	22	Hex locknut, 5/16-18, with nylon insert (2)	7739
Kit 83000001DJF Red Hot Sunglo (2009). FLHTCUTG models.	1	Body assembly, Red Hot Sunglo (2009) (includes Items 2-10)	83318-11DJF
	11	Trunk door assembly, Red Hot Sunglo (2009) (includes Items 12-15)	83341-11DJF
	16	Plain washer, 5/16 (2)	6702
	17	Side cover kit, Red Hot Sunglo (2009)	57200005DJF
	18	Trunk liner kit (includes Items 19 and 20)	83447-11
	21	Screw, hex head, 5/16-18 x 19 mm (0.75 in), with lock patch	3445
	22	Hex locknut, 5/16-18, with nylon insert (2)	7739
Kit 83000001GY Arctic White. FLHTCUTG models.	1	Body assembly, Arctic White (includes Items 2-10)	83318-11GY
	11	Trunk door assembly, Arctic White (includes Items 12-15)	83341-11GY
	16	Plain washer, 5/16 (2)	6702
	17	Side cover kit, Arctic White	57200005GY
	18	Trunk liner kit (includes Items 19 and 20)	83447-11
	21	Screw, hex head, 5/16-18 x 19 mm (0.75 in), with lock patch	3445
	22	Hex locknut, 5/16-18, with nylon insert (2)	7739
Kit 83000001QH Concord Purple. FLHTCUTG models.	1	Body assembly, Concord Purple (includes Items 2-10)	83318-11QH
	11	Trunk door assembly, Concord Purple (includes Items 12-15)	83341-11QH
	16	Plain washer, 5/16 (2)	6702
	17	Side cover kit, Concord Purple	57200005QH
	18	Trunk liner kit (includes Items 19 and 20)	83447-11
	21	Screw, hex head, 5/16-18 x 19 mm (0.75 in), with lock patch	3445
	22	Hex locknut, 5/16-18, with nylon insert (2)	7739
Kit 83000002CYS Red Hot Sunglo (2010). FLHXXX models.	1	Body assembly, Red Hot Sunglo (2010) (includes Items 2-10)	83530-11CYS
	11	Trunk door assembly, Red Hot Sunglo (2010) (includes Items 12-15)	83341-11CYS
	17	Side cover kit, Red Hot Sunglo (2010)	57200005CYS
	21	Screw, hex head, 5/16-18 x 19 mm (0.75 in), with lock patch (2)	3445

**Table 1. Service Parts**

<b>Kit</b>	<b>Item</b>	<b>Description (Quantity)</b>	<b>Part Number</b>
Kit 83000002DH Vivid Black. FLHXXX models.	1	Body assembly, Vivid Black (includes Items 2-10)	83530-11DH
	11	Trunk door assembly, Vivid Black (includes Items 12-15)	83341-11DH
	17	Side cover kit, Vivid Black	57200005DH
	21	Screw, hex head, 5/16-18 x 19 mm (0.75 in), with lock patch (2)	3445

**Table 2. Service Parts (Continued)**

<b>Kit</b>	<b>Item</b>	<b>Description (Quantity)</b>	<b>Part Number</b>
Item 1, Body Assembly; Available components:	2	Insert, spacer, flanged ("top hat") (2)	83798-11
	3	Insert, press-in, 1/4-20 (4)	83782-11
	4	Insert, "top hat", press-in, 1/4-20 (2)	83778-11
	5	Insert, press-in, 5/16-18 (12)	83777-11
	6	Clip, adhesive-back, small (17 used on FLHTCUTG, 22 on FLHXXX)	10102
	7	Clip, adhesive-back, large (3)	10103
	8	Seal, trunk door (cut to fit)	83991-11
	9	Sealing washer, trunk lock	12300002
	10	Foam tape (4)	83811-09
	Item 11, Trunk Door Assembly; Available components:	12	Insert, molded-in, 1/4-20 (13)
13		Insert, "top hat", press-in, 1/4-20 (2)	83778-11
14		Insert, blind "top hat", press-in, 1/4-20 (3)	83783-11
15		Clip, adhesive-back, small (2)	10102
Item 18, Trunk Liner Kit components:	19	Trunk liner, vertical	83457-11
	20	Trunk liner, bottom	83458-11

## SERVICE PARTS

**Table 3. Service Parts (Continued)**

Kit	Item	Description (Quantity)	Part Number
Items common to ALL kits.	23	Washer (2)	6116
	24	Screw, hex head, 5/16-18 x 38 mm (1.5 in), with lock patch (4)	8369
	25	Flat washer, 25.4 mm (1.0 in) OD (6)	6645
	26	Latch housing assembly, trunk door (includes Items 27-36)	83346-11
	27	• Lock mechanism	83352-11
	28	• Screw, lock mechanism (2)	8366
	29	• Nut, lock mechanism (2)	8364
	30	• Latch cover	83296-11
	31	• Latch lever kit (includes Items 32-36)	53000077
	32	• ..... Screw, latch lever (3)	8365
	33	• ..... Cam latch	Not sold separately
	34	• ..... Latch retainer plate	Not sold separately
	35	• ..... Retention spring	Not sold separately
	36	• ..... Release link	Not sold separately
	37	Screw, hex socket flat head, #10-24 x 25.4 mm (1.0 in) (2)	4239
	38	Screw, TORX button head, with washer, 1/4-20 x 13 mm (0.5 in) • Trunk latch housing to body (4) • Trunk latch pin assembly to trunk door (3) • Trunk door inner cover to trunk door (4)	10200004
	39	O-ring, trunk lock	8367
	40	Cover, trunk door inner (includes label 83446-09)	83434-11
	41	Lanyard, trunk door (2)	83344-11
	42	Shoulder bolt, 1/4-20 x 11 mm (0.438 in) (4)	8359
	43	Latch pin assembly (includes Items 44-46)	83538-11
	44	• Latch pin	83781-11
	45	• Bracket, latch pin	Not sold separately
	46	• Hex jam nut	7763W
	47	Nut, Nylok, 1/4-20 (6)	7686
	48	Screw, hex socket head, with lock patch (2) 5/16-18 x 25.4 mm (1.0 in) long	2708A

## SERVICE PARTS

**Table 4. Service Parts (Continued)**

Kit	Item	Description (Quantity)	Part Number
	A	Original left-hand trunk door hinge	
	B	Original right-hand trunk door hinge	
	C	Original plain washers (6)	
	D	Original Phillips flat head screws, 1/4-20 x 12.7 mm (0.5 in) long> (6)	
	E	Original trunk lockset assembly	
	F	Original trunk lock U-clip	
	G	Original antenna ground plate (FLHXXX models only)	
	H	Original ground stud (FLHTCUTG models only)	
	I	Original plain washer (FLHTCUTG models only)	
	J	Original ground strap (FLHTCUTG models only)	
Items mentioned in text, but not included in kits.	K	Trike Replacement Rear Fender Kit:	
		• Dark Blue Pearl with pinstripe	
		• Flame Blue Pearl with pinstripe	
		• Red Hot Sunglo (2010) with pinstripe	
		• Flame Blue Pearl/Bright Silver Pearl, with pinstripe	
		• Vivid Black with pinstripe	
		• Red Hot Sunglo (2009) with pinstripe	
		• Arctic White with pinstripe	
		• Concord Purple with pinstripe	
		• Red Hot Sunglo (2010), no pinstripe	
		• Vivid Black, no pinstripe	
		Part Number: 59500033CPS 59500033CWB 59500033CYT 59500033DCK 59500033BHJ 59500033DJG 59500033CCP 59500033CZ 59500033CYS 59500033DH	