



INSTRUCTIONS

J05493

2013-01-22



LICENSE PLATE RELOCATION KIT

GENERAL

Kit Number

67900127

Models

For model fitment information, see the P&A retail catalog or the Parts and Accessories section of www.harley-davidson.com (English only).

Additional Parts Required

This kit is needed in order to complete the installation of accessories on specific model motorcycles. See the P&A retail catalog or the Parts and Accessories section of www.harley-davidson.com (English only) for available saddlebag kits, model fitment information and additional part requirements.

Tools and Supplies Required

The license plate kit is completely assembled for installation. Should you need service parts refer to the service parts illustration and table.

Electrical Contact Lube (Part No. 99861-02) or equivalent is required for the proper installation of this kit. This item is available from a Harley-Davidson dealer.

Vehicles equipped with a center mount license plate and fender mounted reflectors require installation of additional components (sold separately). Bracket, reflector, left (Part Number 68966-08) (qty 1), Bracket, reflector right (Part Number 68992-08) (qty 1) and Reflector, red (Part Number 59259-90 (qty 2). See Service Parts Table 2.

⚠ WARNING

Rider and passenger safety depend upon the correct installation of this kit. Use the appropriate service manual procedures. If the procedure is not within your capabilities or you do not have the correct tools, have a Harley-Davidson dealer perform the installation. Improper installation of this kit could result in death or serious injury. (00333b)

NOTE

This instruction sheet refers to service manual information. A service manual for this year/model motorcycle is required for this installation and is available from a Harley-Davidson dealer.

Kit Contents

See Figure 2 and Table 2.

PREPARATION

NOTE

For vehicles equipped with security siren:

- Verify that the Hands-Free Fob is present.
- Turn the ignition key switch to **IGNITION**.

1. Remove the seat per service manual instructions. Retain all seat mounting hardware.

⚠ WARNING

To prevent accidental vehicle start-up, which could cause death or serious injury, remove main fuse before proceeding. (00251b)

2. Refer to the service manual and follow the instructions to remove the main fuse.

INSTALLATION

Electrical Disconnection

NOTE

- **DO NOT unplug the electrical connector [78] from the electronic control module (ECM).**
- *Electrical connectors are identified in the service manual by the numbers and letters within brackets.*

1. Remove the nylon push fastener at the top of the ECM mounting bracket to separate the ECM and bracket from the rear fender.
2. Remove the cable strap and unplug the four-way stop/tail/turn signal (STT) connectors [18] and [19] and two-way license plate illuminator connector [93] in front of the rear fender.
3. Loosen, but do not remove the two button head screws on each side of the fender.
4. Protect the painted surfaces of the fender, oil tank and frame, and remove the four screws and washers holding the rear fender supports to the vehicle frame.
5. Remove the rear fender, license plate module support and fender supports from the vehicle as an assembly, and place the protected fender, upside-down, on a smooth, clean work surface.
6. Remove the two button head screws on the inside of the fender to free the front of the fender supports.
7. Remove the two button head screws loosened in Step 5 on the outside of each fender support, and remove the fender mounting bracket and fender support on each side of the fender.
8. Remove the screws and washers from the inside of each fender support, and remove the STT lamps and lamp supports from the fender supports.
9. Remove and discard side mount license plate assembly.



- Remove and discard stock license plate support bracket from fender.

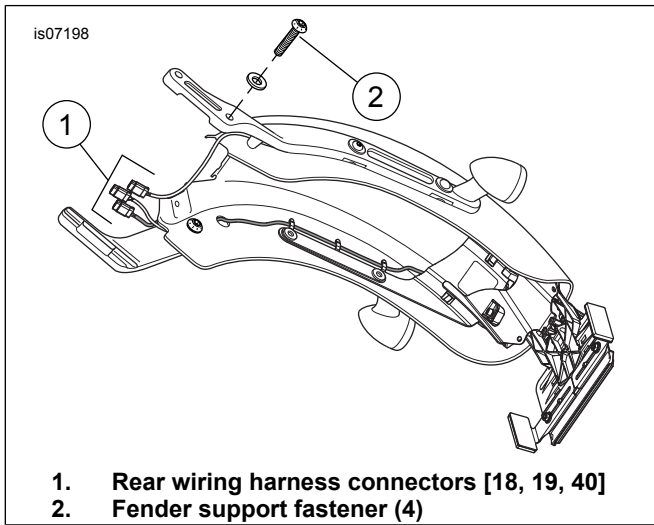


Figure 1. Rear Fender

License Plate Bracket Assembly and Installation

NOTE

Make sure wires are routed properly to prevent tire from contacting wiring.

When installing license plate bracket assembly, make sure wiring is routed through the four wire retainers (8) on the right side.

- See Figure 2. Place license plate bracket assembly into position and install fender mounting brackets (C).
- Route wiring through hole (A) to outside of fender.
- Install **new** cable strap securing wiring to fender between last wire retainer (D) and hole (A).

NOTE

When installing fender supports to fender, make sure wire routing is correct. See service manual, 7.19 TURN SIGNALS AND RUNNING LIGHTS, Lamp Replacement.

- Apply Loctite Threadlocker and Sealant 243 (blue) to fasteners (B) and install fender supports to fasteners (B) and install fender supports to fender with fasteners (B). Tighten fasteners to 28.5–36.6 N·m (21–27 ft-lbs).

- Install wiring to connector housing, if removed. Refer to the service manual table 2-19 or table 2-20 and see A. 15 DEUTSCH DTM SEALED SOLID BARREL MINI TERMINAL REPAIR.

Fender Installation

- See Figure 1. Carefully place the fender into position.
- Install fender support fasteners (2). Tighten fasteners to an initial torque of 40.7–47.5 N·m (30–35 ft-lbs). Loosen fasteners and final-tighten to 51.5–56.9 N·m (38–42 ft-lbs).
- Install nylon fastener that secures ECM to rear fender. See 7.4 ELECTRONIC CONTROL MODULE (ECM).
- Connect all three rear wiring harness connectors [18, 19, 40] (1).
- Install main fuse.

▲ WARNING

After installing seat, pull upward on seat to be sure it is locked in position. While riding, a loose seat can shift causing loss of control, which could result in death or serious injury. (00070b)

- Install seat.

▲ WARNING

Be sure that all lights and switches operate properly before operating motorcycle. Low visibility of rider can result in death or serious injury. (00316a)

- Check rear lighting for proper operation.

Table 1. License Plate Lighting Connector Pin Location (Domestic and HDI)

PIN	COLOR	FUNCTION
1	BK	License plate lamp
2	-	Not used
3	BK	Ground

SERVICE PARTS

is07208

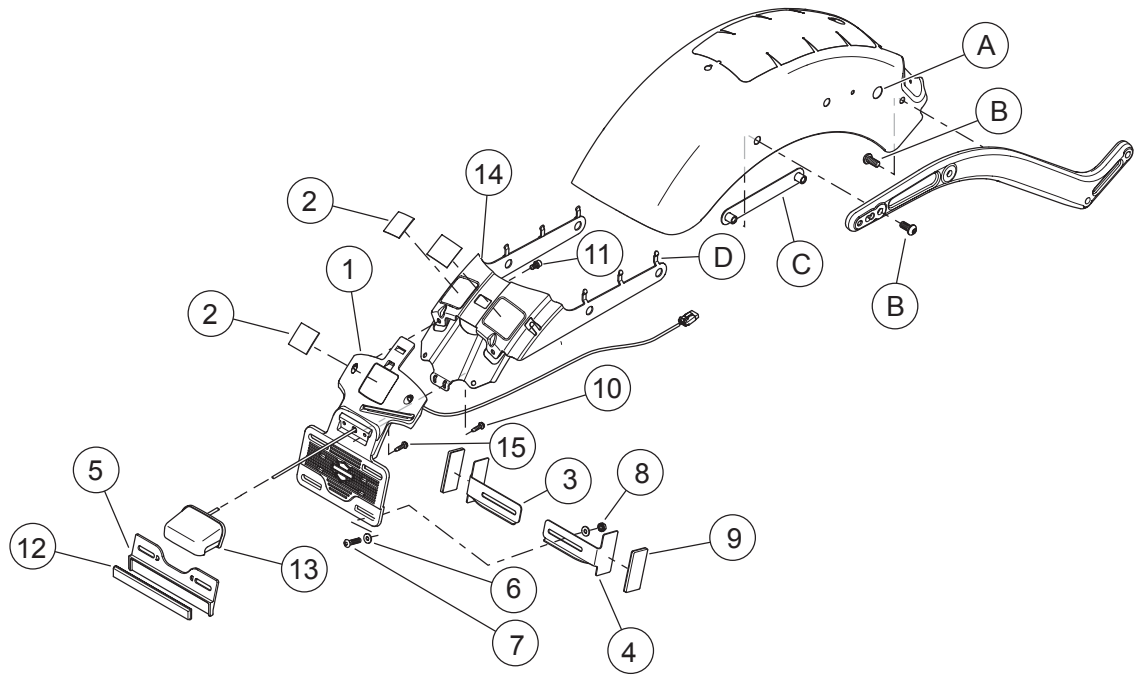


Figure 2. Service Parts: License Plate Relocation Kit

Table 2. Service Parts Table

Item	Description (Quantity)	Part Number
1	License plate bracket	60154-11
2	Adhesive foam tape	11100010
3	Bracket, reflector left	68966-08
4	Bracket, reflector right	68992-08
5	Reflector bracket, DOM	73410-11
6	Plain washer, type A (4)	6703
7	Hex socket button head screws (2)	940
8	Keps nut (2)	7792
9	Reflector, red (2)	59259-90
10	TORX® pan head tapping screws (2)	3612
11	Hex socket head cap screws (2)	4705
12	Reflector, red	59988-72A
13	License plate light assembly (Domestic/HDI)	73504-11
14	Mounting bracket	59679-11
15	Screw (2)	4091
Items mentioned in text, but not included in kit:		
A	Hole for license plate light wire routing	
B	Fastener (6)	
C	Fender mounting bracket (2)	
D	Wire retainer (part of mounting bracket)	