



INSTRUCTIONS

J05735

2020-04-01



BOOM! AUDIO SADDLEBAG SPEAKER COVER KIT

GENERAL

Kit Number

90200827, 90200826, 90201108, 90201109, 90201397xxx, 90201401xxx, 90201505xxx, 90201506xxx, 92200071xxx and 92200069xxx

Models

For model fitment information, see the P&A retail catalog or the Parts and Accessories section of www.harley-davidson.com (English only).

NOTE

The speakers in this kit are for use ONLY on specific 2014 and later Harley-Davidson® audio systems. See the P&A retail catalog or the Parts and Accessories section of www.harley-davidson.com (English only).

*Using these speakers on 2005 or earlier Harley-Davidson audio systems **WILL cause permanent damage** to those systems.*

Installation Requirements

Proper installation of this kit requires the replacement of the saddlebag covers. Covers are available separately from a Harley-Davidson dealer.

For CVO models with power lock module, the installation requires separate purchase of drilled handle kit 90201116.

▲ WARNING

Rider and passenger safety depend upon the correct installation of this kit. Use the appropriate service manual procedures. If the procedure is not within your capabilities or you do not have the correct tools, have a Harley-Davidson dealer perform the installation. Improper installation of this kit could result in death or serious injury. (00333b)

NOTE

This instruction sheet references service manual information. A service manual for this year/model motorcycle is required for this installation. One is available from a Harley-Davidson dealer.

▲ WARNING

Do not exceed saddlebag weight capacity. Put equal weight in each bag. Too much weight in saddlebags can cause loss of control, which could result in death or serious injury. (00383a)

NOTE

Maximum saddlebag weight capacity is 6.8 kg (15 lb) with the speakers installed.

Kit Contents

See Figure 8 and Table 1.

SADDLEBAG PREPARATION

Saddlebag Cover Removal

NOTE

Vehicles equipped with security siren:

- Verify that the Hands-Free Fob is present.

NOTE

For ALL vehicles:

- Remove all items from the saddlebags.
- The saddlebags do not have to be removed from the vehicle to perform the **cover removal** procedure.
- Take care to avoid damage to the saddlebag bottom when removing the cover.

1. See the service manual. Remove and disassemble the saddle bag covers.

Saddlebag Cover Assembly

NOTE

Unfinished saddlebag covers must be finish painted before installation.

1. See Figure 1. Install the grommet from the original cover in the lever hole.

NOTE

*Ambient temperature should be **at least** 16 °C (61 °F) for proper adhesion of the gasket to the saddlebag cover.*

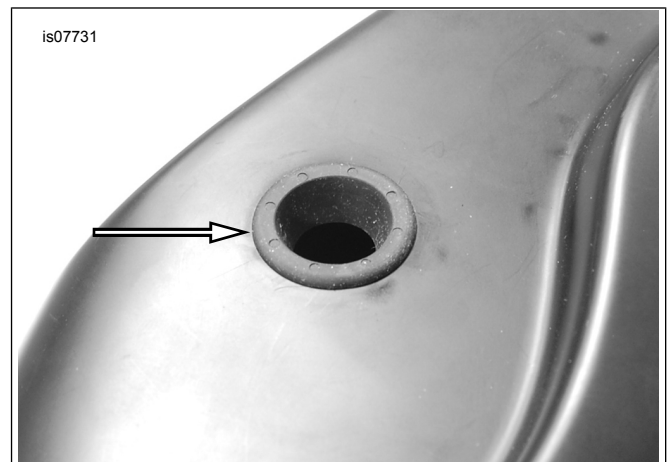


Figure 1. Lever Grommet



- See Figure 2. Install the lever bolt into the latch assembly.

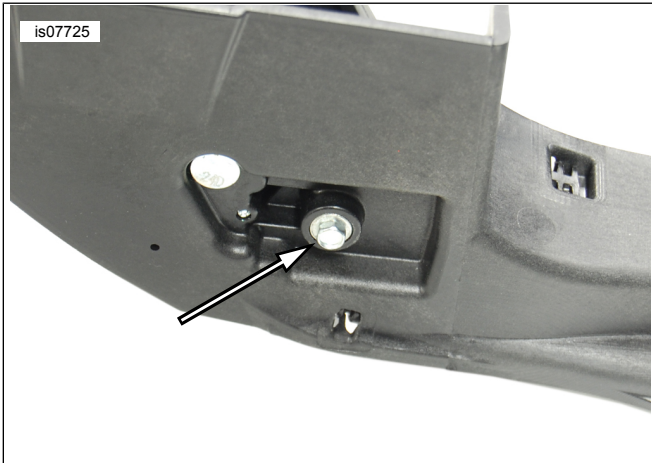


Figure 2. Lever Bolt

- See Figure 3. Position the latch assembly (2) and verify the hex head (3) bolt stayed in position. Lift the latch assembly (end opposite of the speaker) and position the speaker end under the locating tab (1).

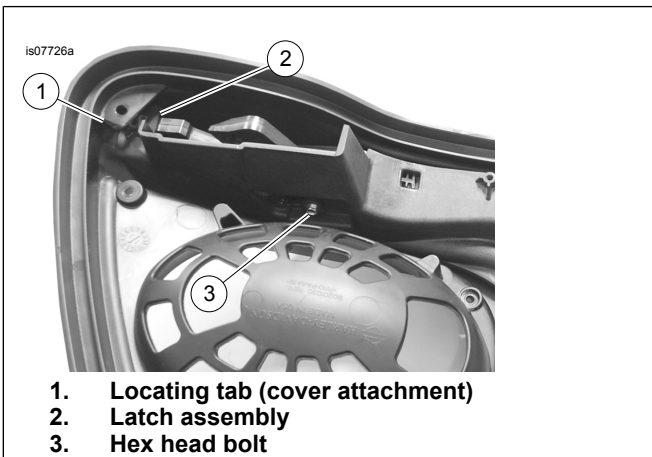


Figure 3. Latch Assembly (Lever end)

- See Figure 4. To install the latch assembly (1), pull the latch assembly towards the center of the cover to clear the cover locating tabs (2).

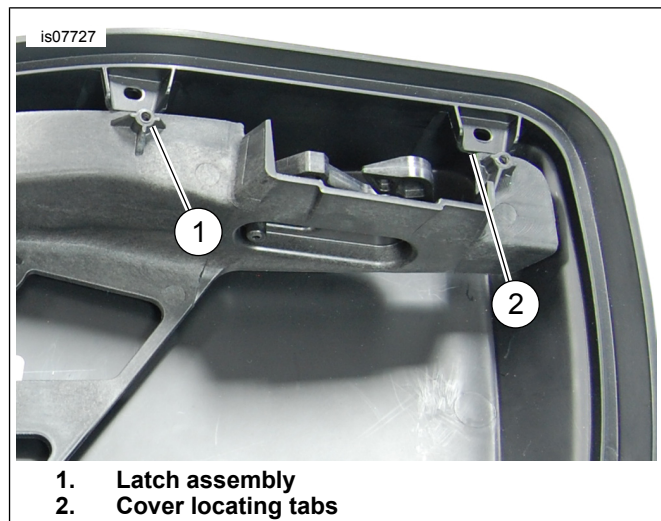


Figure 4. Install Latch Assembly

- See Figure 5. Install three of the original four latch assembly screws. Tighten.

Torque: 2.2–3.3 N·m (19–29 in-lbs)

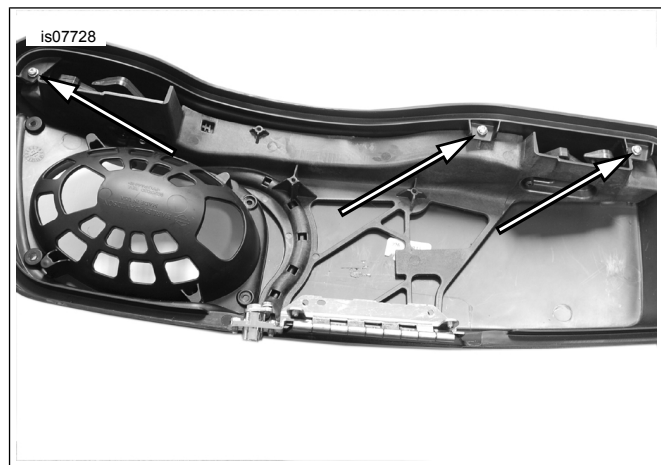


Figure 5. Latch Assembly Screws

- See Figure 6. Hold faceplate (1) in place and install three screws (2). Tighten.

Torque: 5.1–6.2 N·m (45–55 in-lbs)

NOTE

This step is essential to prevent water intrusion.

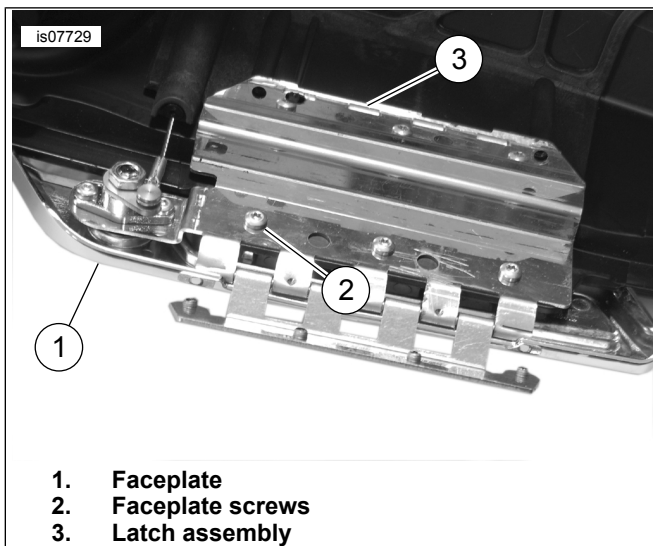


Figure 6. Faceplate and Latch Assembly

7. See Figure 7. Clean the area (1) with a mixture of 50-70 percent isopropyl alcohol and 30-50 percent distilled water. Remove the protective seal from foam gasket and install the foam gasket in orientation shown by applying pressure to the adhesive tape.
8. Install the handle. Tighten.
Torque: 5.1–6.2 N·m (45–55 in-lbs)

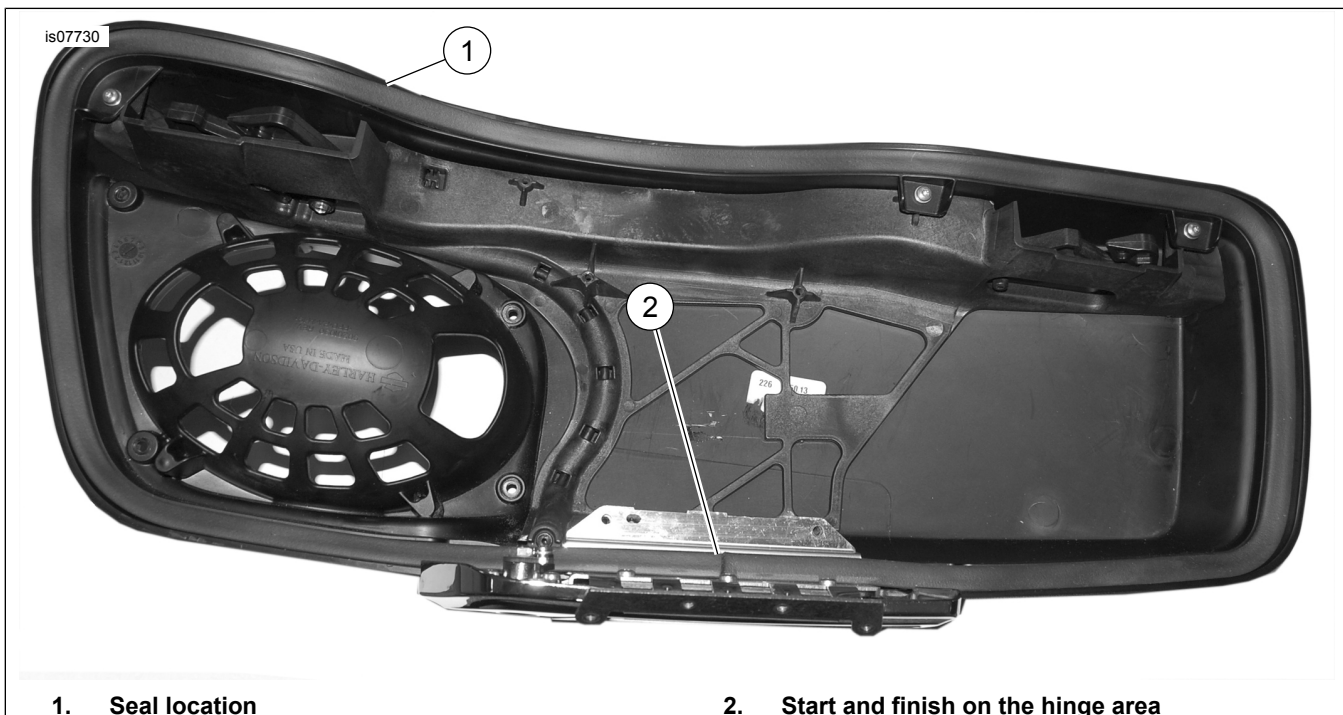


Figure 7. Install Foam Gasket

9. See the service manual. Install the cover.
10. Install the speaker according to the instruction sheet included with that kit.
11. Apply new load capacity label over the original label in the lower half of the saddlebag.

SERVICE PARTS

is07732

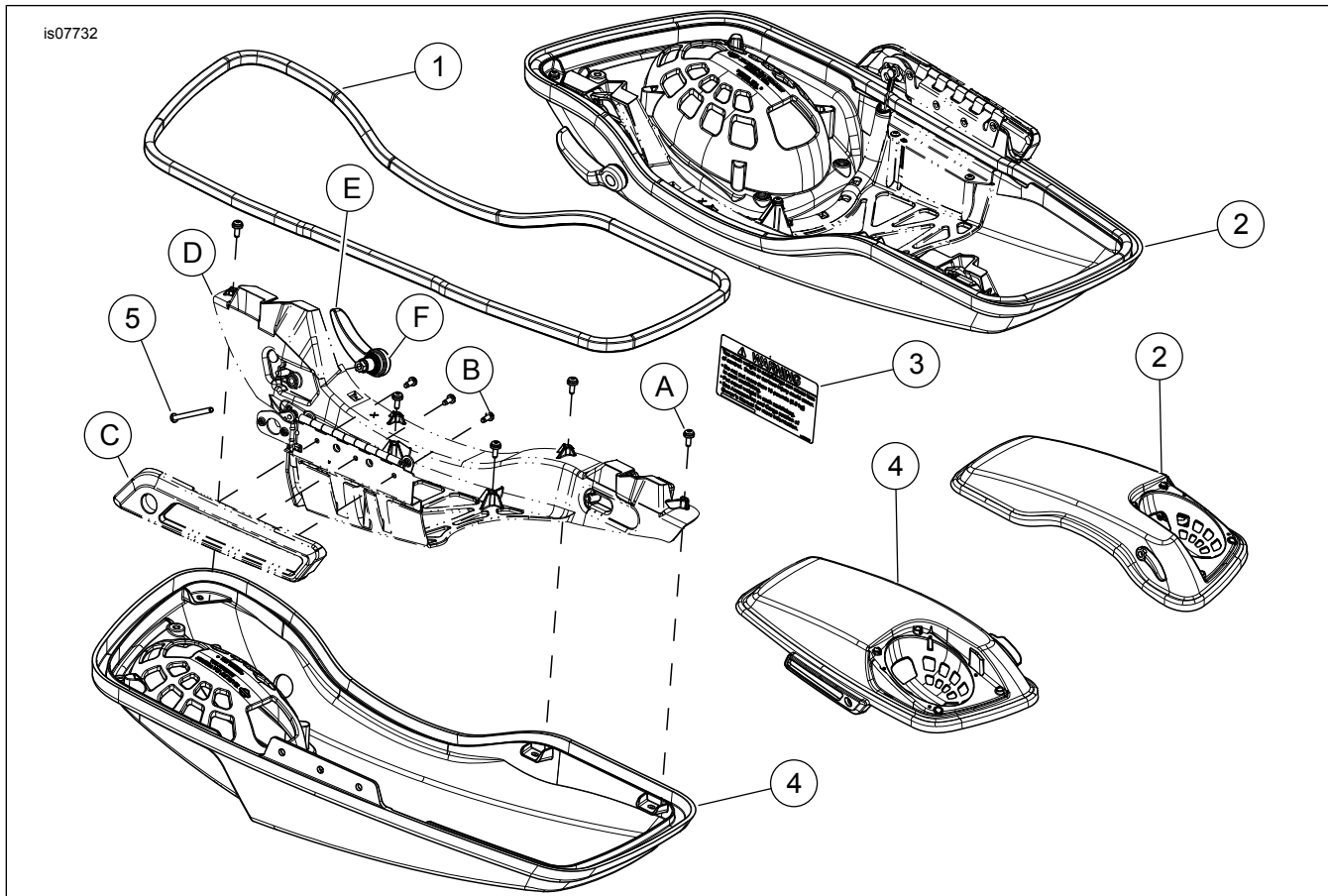


Figure 8. Service Parts, Boom! Audio Saddlebag Speaker Cover Kit

Table 1. Service Parts, Touring Model Saddlebag Covers With Speaker Mount

Item	Description (Quantity)	Part Number
1	Gasket saddlebag, cover (1)	90200415
2	Cover, saddlebag, speaker painted, solid, LH (1)	Not sold separately
3	Label, capacity (1)	14002201
4	Cover, saddlebag, speaker painted, solid, RH (1)	Not sold separately
5	Hex head screw #8-32 x 1.00in. stainless steel (1)	Not sold separately
Items mentioned in text, but not included in kit:		
A	Screw, self-tapping (8 on original 6 re-used)	
B	Screw, machine (6)	
C	Faceplate (2)	
D	Latch assembly (2)	
E	Handle, saddlebag (2)	
F	Handle grommet (2)	