



INSTRUCTIONS

J05329

2010-12-08



SCREAMIN' EAGLE CRANKCASE MAIN SEAL INSTALL/REMOVAL TOOL

GENERAL

Kit Number

14900015

Models

For TC-88 and TC-96 main seal installation and removal.

▲ WARNING

Rider and passenger safety depend upon the correct installation of this kit. Use the appropriate service manual procedures. If the procedure is not within your capabilities or you do not have the correct tools, have a Harley-Davidson dealer perform the installation. Improper installation of this kit could result in death or serious injury. (00333b)

NOTE

This instruction sheet references service manual information. A service manual for your model motorcycle is required for this installation and is available from a Harley-Davidson Dealer.

Kit Contents

See Figure 1 and Table 1.

REMOVAL OF MAIN SEAL

1. Remove the primary cover and drive components using the appropriate service manual.
2. See Figure 1 and Table 1. Select the appropriate protection device for the end of the sprocket shaft based on your engine:
 - a. TC-88 based engines (except MY '06 Dynaglide), thread the sprocket shaft cap (4) onto the end of the sprocket shaft finger tight.
 - b. TC-96 based engines (including MY '06 Dynaglide), slide the sprocket shaft plug (3) into the end of the sprocket shaft screw.
3. Slide the installer/remover tool main body (1) over the end of the sprocket shaft screw (2) with the large end toward the crankcase. The large end should sit snugly against the crank case.

4. Carefully install the three self tapping screws (5) through the three holes in the tool main body. Using firm pressure and the appropriate sized nut driver, turn the screws into the seal until the screw punctures through the old seal. Only perform this operation by hand and stop as soon as the screw has pierced the seal and engaged by 1 revolution. Adjust screw depth so that the clearance between the head of the screws and the main tool body is consistent so that the seal is pulled on evenly.

NOTE

Installing the screws too deep into the seal can cause the screw to contact the bearing cage resulting in damage.

5. Install the tool screw (2) into the tool main body. Thread it in by hand until the screw contacts the sprocket shaft protective device and the clearance is taken up between the tool main body and the heads of the self tapping screws.

NOTE

Apply graphite lubricant sparingly to the threads of the tool screw to prolong the service life and enhance smooth operation.

6. Using a 3/4" hand wrench, tighten the tool screw (2) to remove the seal.

INSTALLATION OF SCREW

1. Apply a light coating of SE Assembly Lube (Part Number 94971-09) to the inside lip of the oil seal and slide the seal onto the sprocket shaft with the lettering on the oil seal facing outward. Slide the seal up to the crankcase so that the outer edge of the seal body squarely resting against the crankcase bore.
2. Select the appropriate protection device for the end of the sprocket shaft based on your engine. TC-88 based engines (except MY '06 Dynaglide), thread the sprocket shaft cap (4) onto the end of the sprocket shaft finger tight. TC-96 based engines (including MY '06 Dynaglide), slide the sprocket shaft plug (3) into the end of the sprocket shaft.
3. Slide the Installer/Remover tool main body (1) over the end of the sprocket shaft with the large end toward the crankcase.
4. With one hand holding the tool main body against the seal, lightly tap the end of the tool main body with a rubber mallet or plastic faced hammer to drive the oil seal into the bore. Drive the oil seal into the bore until the tool main body seats against the crank case.
5. Reassemble drive components and primary cover using the appropriate service manual.



SERVICE PARTS

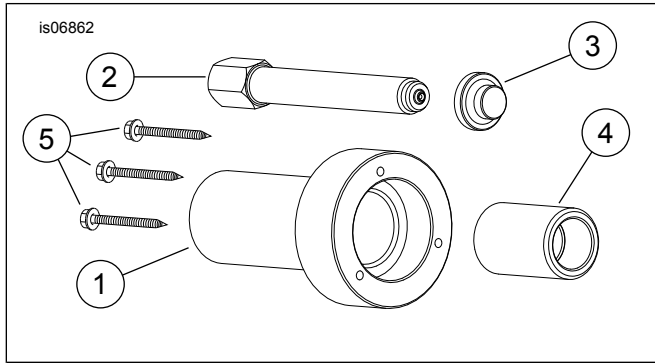


Figure 1. Service Parts: Main Seal Installer/Remover

Table 1. Service Parts

| Item | Description (Quantity) | Part Number |
|------|--|-------------|
| 1 | Remover/Installer tool main body | 775-1 |
| 2 | Screw | 1024 |
| 3 | Sprocket shaft plug | 995-3 |
| 4 | Sprocket shaft cap | 775-2 |
| 5 | Screw, #6 x 1-1/2 inch, self-tapping (3) | 2102 |