



INSTRUCTIONS

J05043

2012-04-20



CHROME FORWARD CONTROL BRACKET KIT

GENERAL

Kit Number

33920-00A

Models

For model fitment information, see the P&A Retail Catalog or the Parts and Accessories section of www.harley-davidson.com (English only).

Additional Parts Required

Loctite® 243 Medium Strength Threadlocker and Sealant - Blue (Part No. 99642-97) is required for proper installation of this kit.

⚠ WARNING

Rider and passenger safety depend upon the correct installation of this kit. Use the appropriate service manual procedures. If the procedure is not within your capabilities or you do not have the correct tools, have a Harley-Davidson dealer perform the installation. Improper installation of this kit could result in death or serious injury. (00333b)

NOTE

This instruction sheet references service manual information. A service manual for your model motorcycle is required for this installation and is available from a Harley-Davidson Dealer.

Kit Contents

See Figure 1 and Table 1.

INSTALLATION

Shifter Side - Left

1. Remove footpeg.
2. Remove jiffy stand, shifter linkage and bracket per service manual instructions. Save mounting hardware for later installation.
3. Push bushings in to a depth similar to original bracket.
4. Thoroughly clean threads of bolts and threaded holes.
5. See the service manual and install jiffy stand and new bracket to frame. Use Loctite® Threadlocker 243 (blue) on bolts.
6. See the service manual and install footpeg.

Brake Side - Right

1. See the service manual and remove master cylinder.

2. Remove brake pedal and footpeg.
3. Remove bracket from frame. Save mounting hardware for later installation.
4. Thoroughly clean threads of bolts and threaded holes.
5. See the service manual and install new bracket to frame. Use Loctite® Threadlocker 243 (blue) on bolts.
6. See the service manual and install footpeg.
7. See the service manual and install master cylinder.
8. See the service manual and bleed the rear brakes.

⚠ WARNING

After repairing the brake system, test brakes at low speed. If brakes are not operating properly, testing at high speeds can cause loss of control, which could result in death or serious injury. (00289a)

9. Test the motorcycle brakes and shift linkage.

SERVICE PARTS

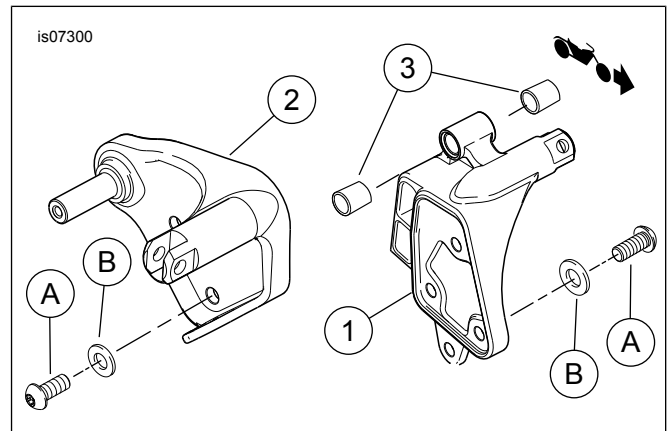


Figure 1. Service Parts: Chrome Forward Control Bracket Kit

Table 1. Service Parts

Item	Description (Quantity)	Part Number
1	Chrome shifter bracket	33921-00
2	Chrome brake bracket	42646-00A
3	Bearing sleeve (2)	33708-94
Items mentioned in text, but not included in kit:		
A	Bolt (2)	
B	Washer (2)	