



INSTRUCTIONS

J05896

2013-06-17



POLICE EMERGENCY LAMP KIT

GENERAL

Kit Number

41000203

Models

For model fitment information, see the Harley-Davidson Police and Fleet Motorcycle catalog or the Police and Fire/Rescue section of www.harley-davidson.com (English only).

NOTE

*This accessory **must be removed** when vehicle is sold for non-police use. Follow all applicable federal, state and local regulations when changing to a civilian vehicle.*

Installation Requirements

Models with turn signals mounted on the upper or lower fork clamp require separate purchase of a Front Directional Relocation Kit (Part No. 68603-01).

A Packard Crimping Tool (Part No. HD-38125-8) or equivalent device is required for proper installation of this kit.

An Ultratorch UT-100 (Part No. HD-39969), Robinair Heat Gun (Part No. HD-25070) with Heatshrink Attachment (Part No. HD-41183), or other suitable radiant heating device is required for proper installation of this kit.

⚠ WARNING

Rider and passenger safety depend upon the correct installation of this kit. Use the appropriate service manual procedures. If the procedure is not within your capabilities or you do not have the correct tools, have a Harley-Davidson dealer perform the installation. Improper installation of this kit could result in death or serious injury. (00333b)

NOTE

This instruction sheet refers to service manual information. A service manual and a Police Model service manual supplement for this year/model motorcycle is required for this installation. One is available from a Harley-Davidson dealer.

ELECTRICAL OVERLOAD

NOTICE

It is possible to overload the vehicle's charging system by adding too many electrical accessories. If the combined electrical accessories operating at any one time consume more electrical current than the vehicle's charging system can produce, the electrical consumption can discharge the battery and cause damage to the vehicle's electrical system. (00211d)

⚠ WARNING

When installing any electrical accessory, be certain not to exceed the maximum amperage rating of the fuse or circuit breaker protecting the affected circuit being modified. Exceeding the maximum amperage can lead to electrical failures, which could result in death or serious injury. (00310a)

This kit requires up to **2.8 amps** more current from the electrical system.

Kit Contents

See Figure 5 and Table 1.

PREPARATION

⚠ WARNING

To prevent spray of fuel, purge system of high-pressure fuel before supply line is disconnected. Gasoline is extremely flammable and highly explosive, which could result in death or serious injury. (00275a)

Purge and disconnect fuel supply line.

⚠ WARNING

To prevent accidental vehicle start-up, which could cause death or serious injury, remove main fuse before proceeding. (00251b)

NOTE

- **For vehicles equipped with security siren:** With security fob present, turn ignition switch ON. After system is disarmed, turn ignition switch OFF. **IMMEDIATELY** remove the main fuse per the service manual.
- **For vehicles WITHOUT security siren:** See the service manual to remove the main fuse or disconnect the battery cables.

⚠ WARNING

When servicing the fuel system, do not smoke or allow open flame or sparks in the vicinity. Gasoline is extremely flammable and highly explosive, which could result in death or serious injury. (00330a)

1. **Vehicles with instrument console on tank:** See the service manual to remove the instrument console from the fuel tank.
2. See the service manual for fuel tank removal instructions.



INSTALLATION

1. See Figure 1. Install the right side mounting bracket (2) on the fork tube (1) using the right side clamp (3) and two hex socket head screws (4-5). Tighten the outboard screw (4) to 8–9 N·m (70–80 **in-lbs**). Tighten the inboard screw (5) to 8–9 N·m (70–80 **in-lbs**).
2. See Figure 2. Route the wire (2) of the **blue** lamp (1) through the mounting bracket (3). Secure the lamp to the bracket with a clamp block (4), lockwasher (5) and retainer (6). Tighten the retainer to 22–24 N·m (16–18 ft-lbs).
3. Slide the conduit (7) over the lamp wire.
4. Repeat Steps 1-3 on the left side of the vehicle using the red lamp.

NOTICE

When routing wires and harnesses, verify that they are clear of moving parts, heat sources and pinch points to avoid wire damage or a short circuit, which could result in electrical system damage. (00579b)

5. See Figure 5. Install the wiring harness (18). Place the flasher (20) in the opening beneath the fuel tank, and route the long leg of the harness forward along the frame backbone inside the plastic wire caddy.

NOTE

Electrical connectors are identified in the service manual by the numbers and letters shown here **within brackets**.

6. Route the terminated black wire (C) to the P&A diagnostic port [C91A]. Insert the black wire terminal into **cavity 6** of the gray six-way socket housing (21) from the kit.
7. Plug the gray socket housing into the P&A diagnostic port. Secure the connectors and wire with cable straps (15) from the kit.
8. Route the harness past the steering head. Route the lamp switch (A) leg of the harness along the left side of the handlebar to the clutch control.
9. Unscrew the boot (19) from the lamp switch. Install the switch into the switch mounting bracket (12). Install the boot on the switch.

NOTE

Over time the boot may become lost, worn or damaged. Replace the boot to prevent moisture from entering the switch.

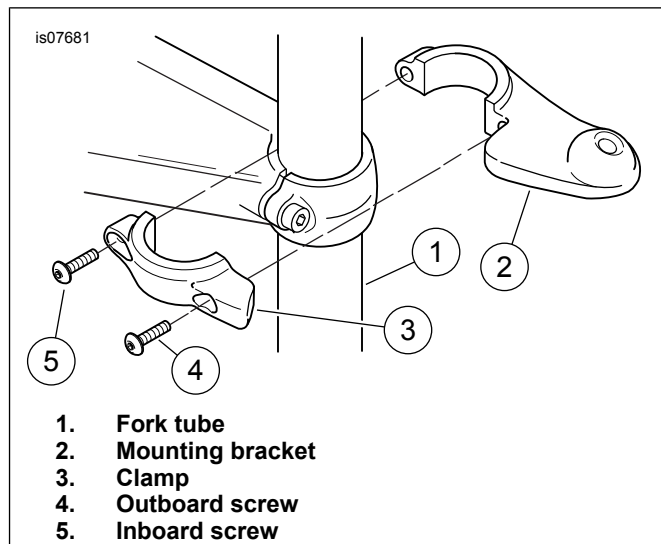


Figure 1. Install Mounting Bracket on Fork Tube (Right Side Shown)

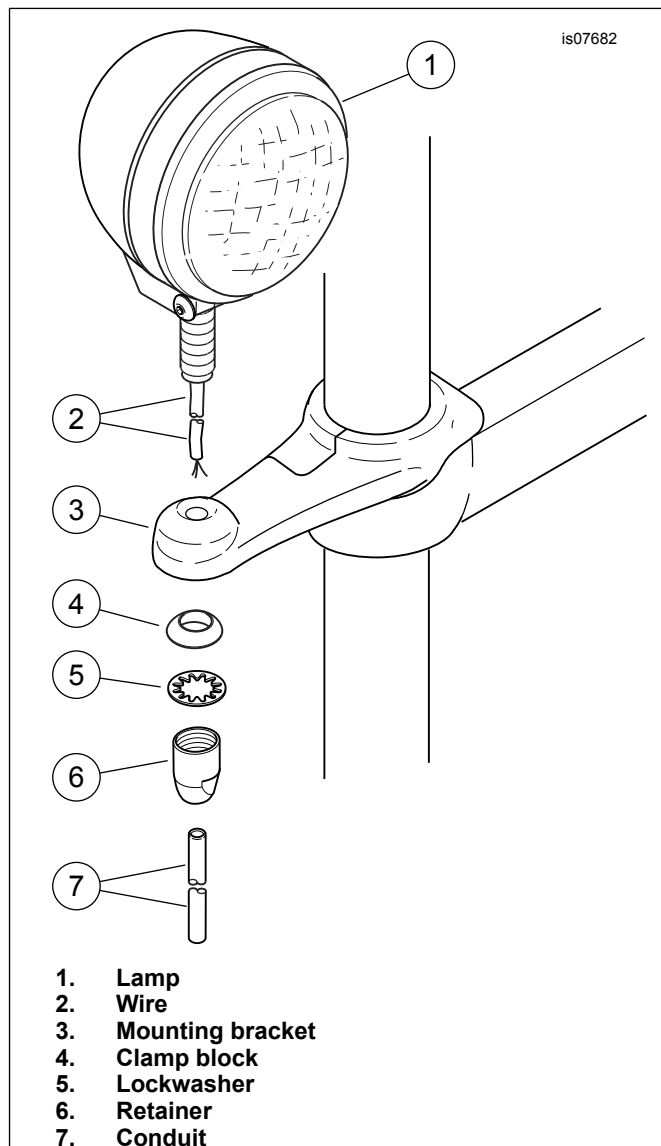


Figure 2. Install Lamp (Right Side Shown)

10. See Figure 3. Remove the lower screw (1) and washer from the clutch control clamp. Install the lamp switch and bracket assembly (2) with the screw and washer. Tighten to 7–9 N·m (60–80 in-lbs).
11. Secure the lamp switch leg of the harness to the handlebar with the **new** wire harness retainers (Figure 5, Item 17) as needed. Snap the retainers into the holes in the handlebar.
12. Get a piece of heat shrink tube (13) and a sealed splice connector (14) from the kit. See Figure 4. Slide the heat shrink tubing (1) over the blue wire (2) of the kit harness. Crimp the sealed splice connector (3) to the wire using a Packard Crimping Tool (Part No. HD-38125-8) or equivalent.
13. Bring the right side lamp wire (4) to the connector. Trim the wire, allowing approximately 25 mm (1 in) of the wire to extend past the sealed splice connector. Trim the conduit (5) approximately 38 mm (1.5 in) back from the end of the wire.
14. Remove approximately 10 mm (0.38 in) of insulation from the end of the lamp wire.
15. Insert the end of the lamp wire into the sealed splice connector. Crimp the wire to the connector with the Packard Crimping Tool.

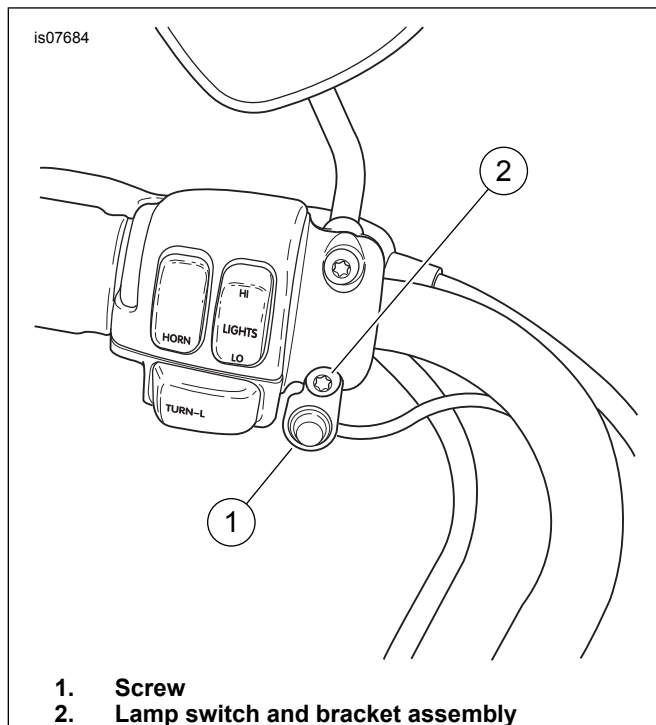


Figure 3. Install Lamp Switch on Clutch Control Clamp

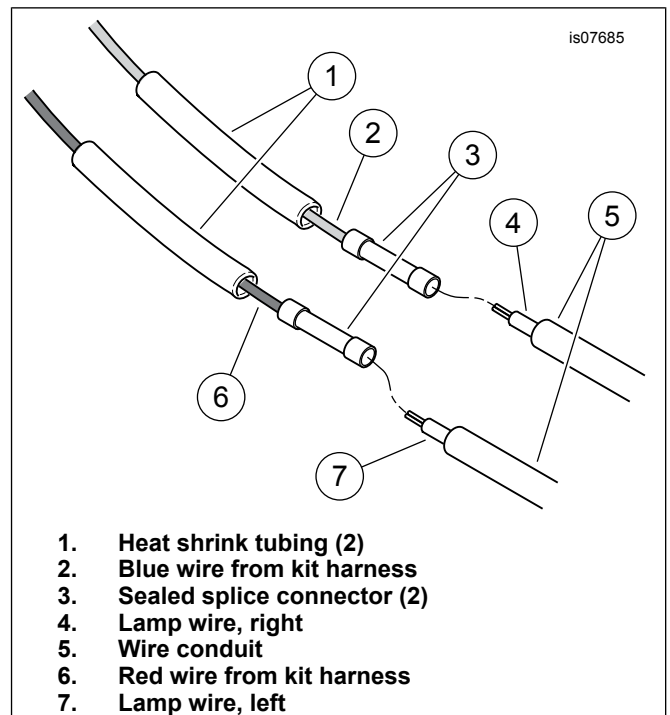


Figure 4. Connect Lamp Wires to New Harness

16. Repeat steps 12-15 to connect the left side lamp wire (7) to the red wire (6) of the harness.

Installation of protective shrink tubing over wire leads is necessary in the installation of this kit to the motorcycle.

▲ WARNING

Be sure to follow manufacturer's instructions when using the UltraTorch UT-100 or any other radiant heating device. Failure to follow manufacturer's instructions can cause a fire, which could result in death or serious injury. (00335a)

- Avoid directing heat toward any fuel system component. Extreme heat can cause fuel ignition/explosion resulting in death or serious injury.
- Avoid directing heat toward any electrical system component other than the connectors and tubing on which heat shrink work is being performed.
- Always keep hands away from tool tip area and heat shrink attachment.

NOTE

Protect the heat shrink tubing from the heat source while applying heat to the sealed splice connectors.

17. Use a heat gun or suitable radiant-heating device to shrink the tubing and conduit to the connectors.
18. Slide the heat shrink tubing (1) away from the splice. Use the radiant heating device to heat the crimped sealed splice connectors (3). Apply heat from the center of the crimp out to each end until the meltable sealant exudes out of both ends of the connector. Let the connector cool.
19. Slide the heat shrink tubing (1) over the splice. Use the radiant heating device, heat the heat shrink tubing to encapsulate the sealed splice connection. Apply heat from the center of the crimp out to each end.

20. See Figure 5. Secure the wires to the lower fork steering bracket using adhesive backed clips (16) from the kit.

COMPLETION

⚠ WARNING

When servicing the fuel system, do not smoke or allow open flame or sparks in the vicinity. Gasoline is extremely flammable and highly explosive, which could result in death or serious injury. (00330a)

NOTICE

When routing wires and harnesses, verify that they are clear of moving parts, heat sources and pinch points to avoid wire damage or a short circuit, which could result in electrical system damage. (00579b)

1. See the service manual for fuel tank installation instructions.

NOTE

Verify that the ignition key switch is in the OFF position **before** installing the main fuse.

2. See the service manual to install the main fuse.

⚠ WARNING

After installing seat, pull upward on seat to be sure it is locked in position. While riding, a loose seat can shift causing loss of control, which could result in death or serious injury. (00070b)

3. See the service manual to install the seat.

NOTE

Properly aligned police emergency lamps shine straight ahead, with the center of the light beams even with a horizontal line drawn on a wall 7.6 m (25 ft) away. Draw the line on the wall at the same height as the center of the lamps with the rider mounted on the vehicle.

4. Align the lamps.
 - a. Insert a flare nut socket at the bottom of the turn signal mounting bracket. Loosen the locknut on the stud.
 - b. Move the lamp and swivel block to the desired position.
 - c. Tighten the locknut to 24.4 N·m (18 ft-lbs).

OPERATION

Set the engine hot idle to 1000 rpm for best operation.

SERVICE PARTS

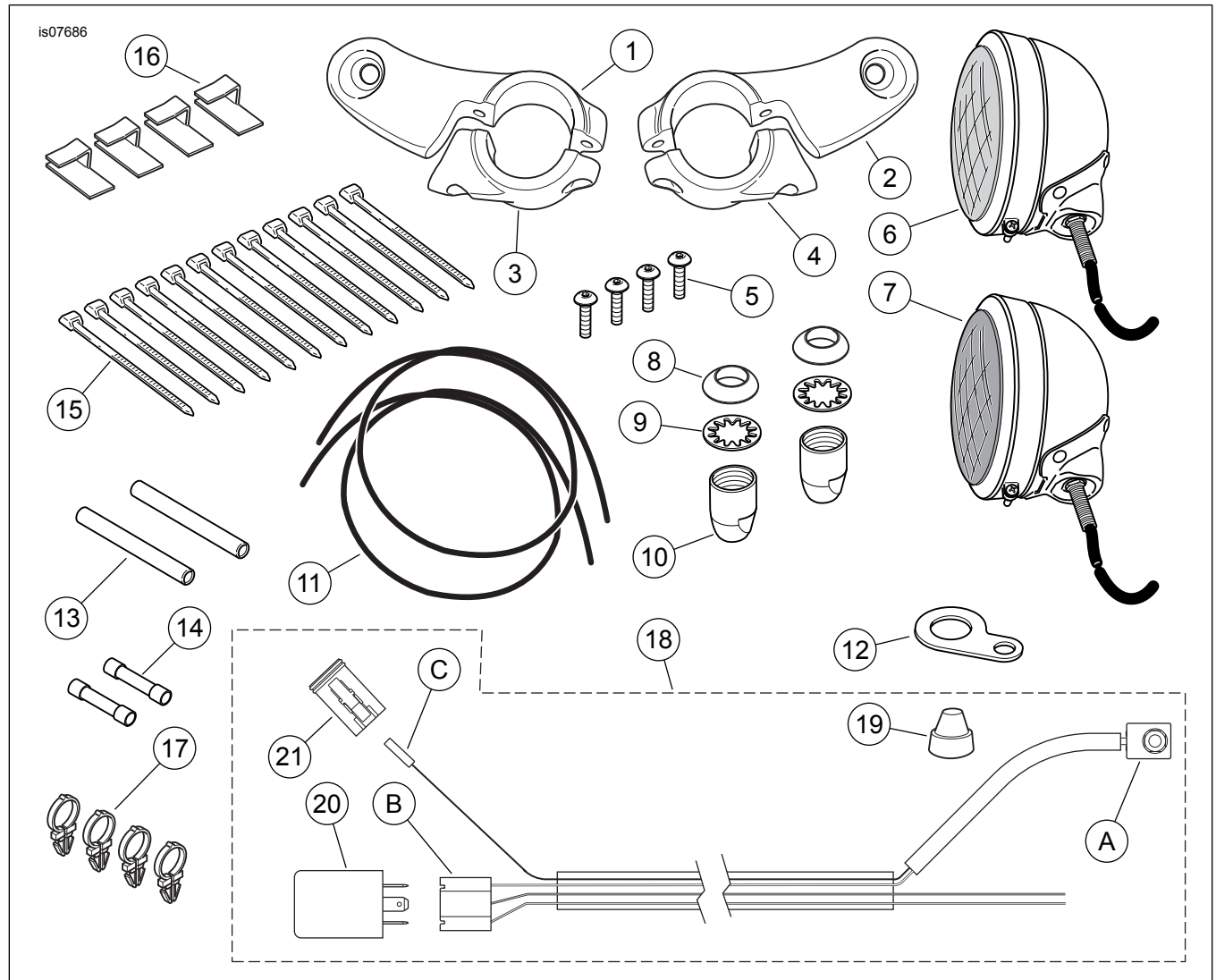


Figure 5. Service Parts, Police Emergency Lamp Kit

SERVICE PARTS

Table 1. Service Parts

Item	Description (Quantity)	Part Number
1	Mounting bracket, police emergency lamp (right)	68302-00
2	Mounting bracket, police emergency lamp (left)	68303-00
3	Clamp, police emergency lamp mounting bracket (right)	68304-00
4	Clamp, police emergency lamp mounting bracket (left)	68305-00
5	Screw, hex socket button head, 1/4-20 x 19 mm (0.75 in) long, with lock patch (4)	927A
6	Pursuit lamp assembly (chrome), right side (with blue lens)	69288-03A
7	Pursuit lamp assembly (chrome), left side (with red lens)	68779-03A
8	Clamp block (2)	68720-62
9	Lockwasher, internal tooth (2)	7130W
10	Retainer, pursuit lamp (2)	68306-00
11	Conduit, extruded vinyl, 0.76 m (30 in) long (2)	70530-89
12	Bracket, push button switch mounting	70371-00
13	Shrink tube (2)	72266-94
14	Sealed splice connector, blue (2)	70586-93
15	Cable strap (12)	10181
16	Clip, adhesive backed (4)	10102
17	Wire harness retainer (4)	70345-84
18	Pursuit lamp wire harness (includes items 19-21)	69200913
19	• Boot, push button switch	67880-94

Table 1. Service Parts

Item	Description (Quantity)	Part Number
20	• Flasher relay	68563-04A
21	• Deutsch socket housing, six-way, gray	72136-94GY
Items mentioned in text, but not included in kit:		
A	Push button switch	
B	Relay terminal connector	
C	Terminated black wire	