



# INSTRUCTIONS

J05655

2013-09-10



## AIR FOIL DETACHABLE LUGGAGE RACK LED LIGHT KITS

### GENERAL

#### Kit Numbers

68000076, 68000077

#### Models

For model fitment information, see the P&A retail catalog or the Parts and Accessories section of [www.harley-davidson.com](http://www.harley-davidson.com) (English only).

#### ⚠ WARNING

**Rider and passenger safety depend upon the correct installation of this kit. If the procedure is not within your capabilities or you do not have the correct tools, have a Harley-Davidson dealer perform the installation. Improper installation of this kit could result in death or serious injury. (00308b)**

#### NOTE

*This instruction sheet refers to service manual information. A service manual for this year/model motorcycle is available from a Harley-Davidson dealer.*

### Installation Requirements

Prior or concurrent installation of an Air Foil Luggage Rack or Air Wing Detachable Sissy Bar Upright is necessary. A model-specific extension wire harness will also be required.

See the P&A retail catalog or the Parts and Accessories section of [www.harley-davidson.com](http://www.harley-davidson.com) (English only) for these items, and for model fitment information.

### Electrical Overload

#### NOTICE

**It is possible to overload the vehicle's charging system by adding too many electrical accessories. If the combined electrical accessories operating at any one time consume more electrical current than the vehicle's charging system can produce, the electrical consumption can discharge the battery and cause damage to the vehicle's electrical system. (00211d)**

#### ⚠ WARNING

**When installing any electrical accessory, be certain not to exceed the maximum amperage rating of the fuse or circuit breaker protecting the affected circuit being modified. Exceeding the maximum amperage can lead to electrical failures, which could result in death or serious injury. (00310a)**

This light kit requires up to **52 mA** additional current from the electrical system.

### Kit Contents

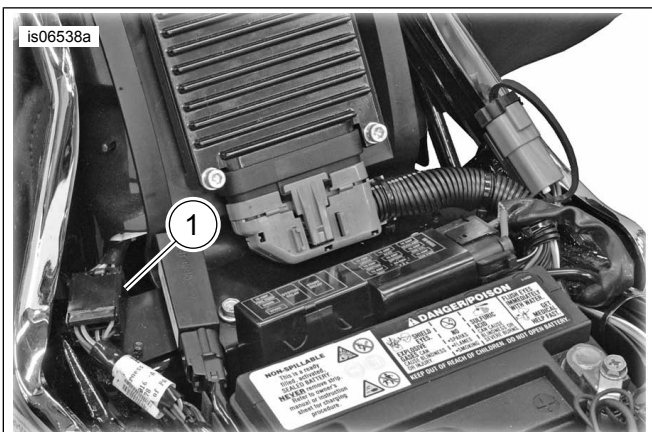
See Figure 6 and Table 1.

### INSTALLATION

#### ⚠ WARNING

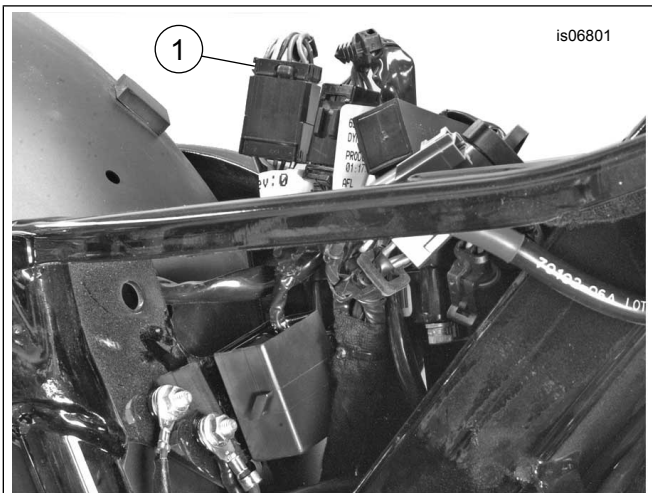
**To prevent accidental vehicle start-up, which could cause death or serious injury, remove main fuse before proceeding. (00251b)**

1. See the owner's manual to remove the seat and main fuse.
2. See Figure 6. **For Sportster, Dyna or Softail models:** If already installed, remove the luggage rack (A) from the vehicle. Place the rack upside-down on the work surface. **For Touring models:** If already installed, remove the sissy bar upright (C) from the vehicle. Place the upright face down on the work surface.
3. **ALL models:** Remove the light filler (B) and two screws (3).
4. **For Sportster, Dyna or Softail models:** Remove the black plastic plug from the hole at the bottom of the left rail.
5. **ALL models:** Insert the loop end of the nylon monofilament guide wire (5) through the lower hole in the left rail, and out through the upper hole at the rear of the rail. Keep the straight end of the guide wire outside the lower hole.
6. Insert approximately 50 mm (2 in) of the light wires through the loop end of the guide wire. Fold the wires compactly to enable threading the wires through the rail.
7. Carefully pull the straight end of the guide wire to draw the wires and shrink tubing into and through the rail, and out the lower hole. Feed the wires through the rail while pulling on the guide wire.
8. Detach the light wires from the guide wire after the wires have been pulled through the lower hole.
9. Install the light assembly (1) to the rear of the luggage rack or upright. Secure with two screws (3).



1. Rear Lighting Harness Connector [7B]

Figure 1. Rear Lighting Harness Connector - Softail Models



1. Rear lighting harness connector [7B]

Figure 2. Rear Lighting Harness Connector - Dyna Models

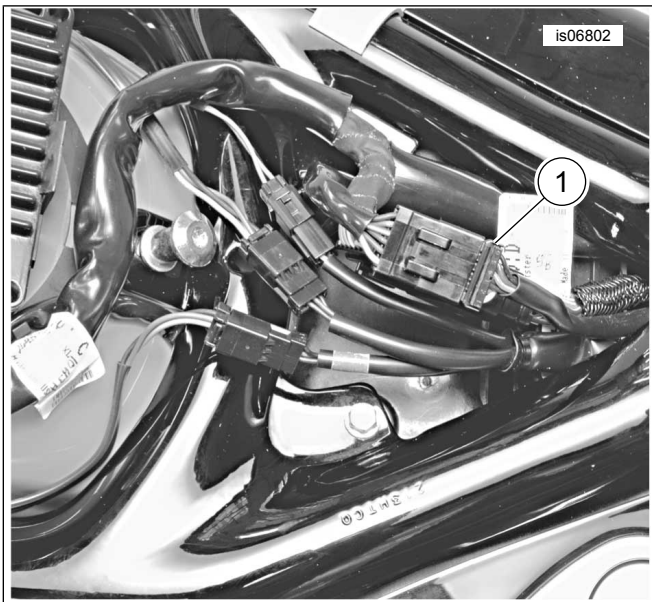
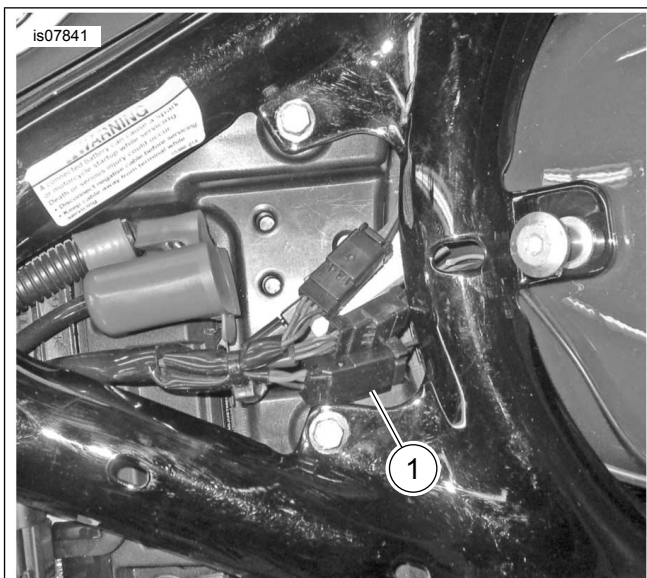


Figure 3. Rear Lighting Harness Connector - Sportster Models: through 2013



1. Rear Lighting Harness Connector [40A]

Figure 4. Rear Lighting Harness Connector - Sportster Models: 2014 and later

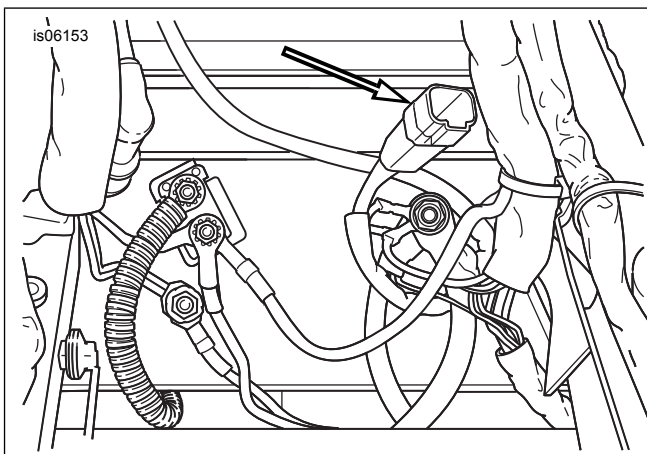


Figure 5. Accessory Connector [4] Location Under Seat - Touring

## WIRING

1. For Air Foil Luggage Rack on Softail, Dyna or Sportster models: For Air Wing Detachable Sissy Bar Upright on Touring models:
  - a. See Figure 1 through Figure 4. Locate and disconnect rear lighting harness connector from the main wiring harness connector.
  - b. See "**GENERAL-Installation Requirements**". Connect the extension wire harness (purchased separately) between the rear lighting connectors.
  - c. Mount the luggage rack to the vehicle per the instructions in **that** kit.

- d. Route the light assembly wires along the frame rail to the three-way connector. Fasten the light assembly wires to the vehicle with adhesive-backed clips (6) (see Figure 6 ).
  - a. See Figure 5. Locate the four-way accessory connector [4] in the area under the seat. Remove the plug from connector [4]. **NOTE:** *If the accessory connector is already in use, a Switched Circuit Adapter Harness (Part No. 70264-94A) is available from a Harley-Davidson dealer to provide an additional connection point.*
  - b. See "**GENERAL-Installation Requirements**". Get the extension wire harness (purchased separately) required for this model motorcycle. Plug the harness into connector [4].
  - c. Mount the sissy bar upright to the vehicle docking points per the instructions in **that** kit. Fasten the light assembly wires to the vehicle with adhesive-backed clips (6) (see Figure 6 ).
  - d. Route the extension harness so the three-way connector can be easily accessed for upright installation and removal.
2. **For ALL Models:** Cut the light assembly wires to eliminate excess but allow easy connection to the extension wire harness.
  3. See Figure 6. See the service manual to crimp the pin terminals (2) to the three wires of the light assembly harness.
  4. Insert the wires and terminals from the light assembly harness into the pin housing (4) from the kit:
    - a. **Blue** wire into cavity 1.
    - b. **Red/yellow** wire into cavity 2.
    - c. **Black** wire into cavity 3.

5. Apply the contents of the dielectric grease packet (8) to the light and extension harness connector terminals.
6. Connect the light assembly harness to the extension wire harness three-way connector.
7. Secure the extension harness to the vehicle with cable straps (7).

## COMPLETION

1. See the owner's manual and install the main fuse.
2. Turn the ignition key switch to IGNITION, but do not start the motorcycle. Test the luggage rack or upright light **and** motorcycle lamps for proper operation:
  - a. With the ignition switch on, the light should illuminate, along with the vehicle tail lamp(s).
  - b. When either the brake hand lever or foot pedal are activated, the light should noticeably brighten along with the vehicle stop lamp(s).
  - c. When either turn signal is activated, the light should remain lit steadily, and not flash.
  - d. Turn the ignition key switch to OFF. The light should turn off along with the vehicle tail lamp(s).

### **⚠ WARNING**

**After installing seat, pull upward on seat to be sure it is locked in position. While riding, a loose seat can shift causing loss of control, which could result in death or serious injury. (00070b)**

3. See the owner's manual to install the seat.

SERVICE PARTS

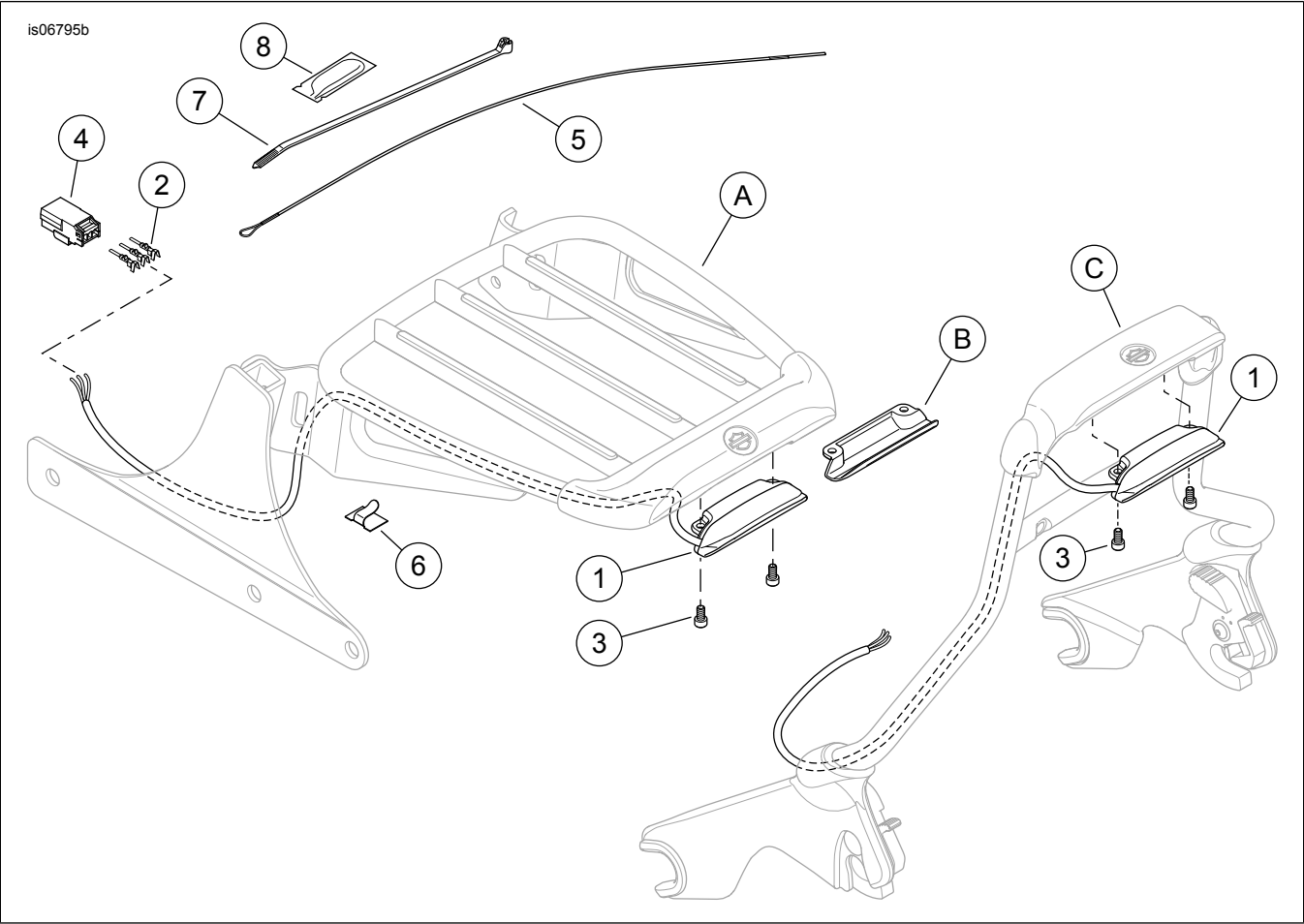


Figure 6. Service Parts: Air Foil Luggage Rack Light Kits

Table 1. Service Parts

Item	Description (Quantity)	Part Number
1	Light assembly, Air Foil detachable luggage rack	Not sold separately
2	Pin terminal, 20-16 AWG (3)	73190-96
3	Screw, socket head, #8-32, stainless steel (2)	Not sold separately
4	Pin housing, three-way	73103-96BK
5	Guide wire (nylon monofilament), with loop end	Not sold separately
6	Clip, adhesive-backed (6)	10102
7	Cable strap (3)	10006
8	Dielectric grease packet	76001-04
Items mentioned in text:		
A	Air Foil Luggage Rack	
B	Light filler	
C	Air Wing Detachable Sissy Bar Upright	