



INSTRUCTIONS

J05742

2013-06-05



XL SUPER SPORT WIND DEFLECTOR

GENERAL

Kit Number

57400184

Wide Clamp Installation

NOTE

Some models may require a re-route for the clutch cable to the outside of the fork tube.

1. Locate the clamps (2) from the kit. Lubricate the upper portion of the fork tubes with soapy water.
2. Note that the bushings are already installed. Install screws (5) to the top mount (11) and through the four bushings (7) and secure the brackets (8) and (9) with the acorn nuts (6).
3. Loosely install the clamps (2) to the fork tubes. Install the cupped sides of the belleville washers on each side followed by the cup spacer (12), and acorn nuts (3) to the lower brackets and clamps. Tighten windshield mount screw (1) to 6.7 N·m (60 **in-lbs**).

4. Position the wind deflector to the desired location on the fork tubes making sure that no cables or other items come in contact with the wind deflector. Tighten windshield mount screw (1) using an eight inch extension tool with hex socket tool to 2.7 N·m (24 **in-lbs**).

Narrow Clamp Installation

NOTE

Some models may require the re-route of the clutch cable to the outside of the fork tube.

1. Lubricate the upper portion of the fork tubes with soapy water. Install the clamps (2) loosely to the inside of the forks.
2. Install the cupped sides of the belleville washers on each side of the clamps followed by the cup washer spacers (12) and acorn nuts (6). Tighten the clamp screws (4) to 6.7 N·m (60 **in-lbs**).
3. Position the wind deflector to the desired location on the fork tubes making sure that no cables or other items come in contact with the wind deflector. Tighten fastener (1) using an eight inch extension tool with hex socket tool to 2.7 N·m (24 **in-lbs**).

SERVICE PARTS

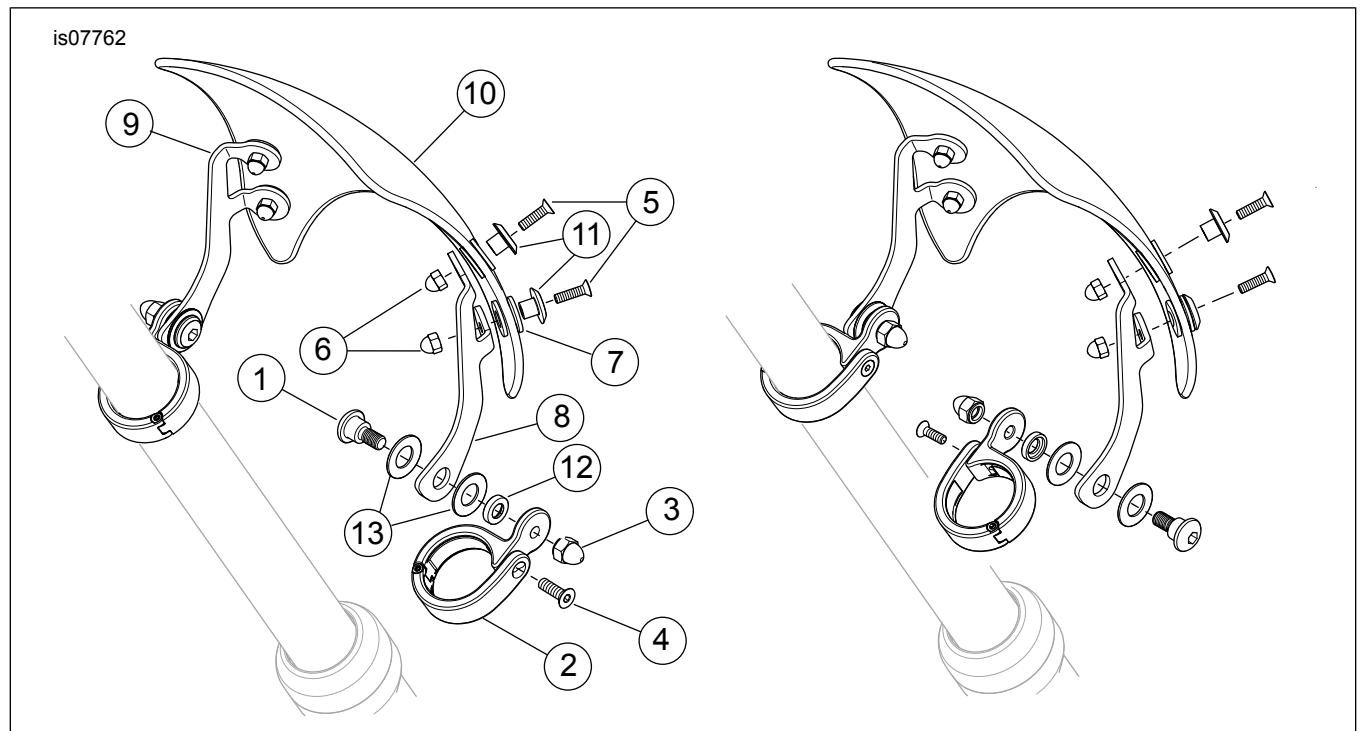


Figure 1. Service Parts: XL Wind Deflector

Table 1. Service Parts Table

Item	Description (Quantity)	Part Number
1	Windshield mount screws (2)	58790-04
2	Windscreen mounting clamps, chrome (2)	10800077
3	Nut, acorn 5/16-24 (2)	94007-90T
4	Socket flat head screw 10-24 unc 5/8 long (4)	10200269
5	Socket flat head screw 10-24 unc, 3/4 long (4)	10200276
6	Acorn nut, 10-24 (4)	10400018
7	Grommet, 0.365 ID	12100057
8	Bracket, RH mounting XL sport windscreen	12700071
9	Bracket, LH mounting XL sport windscreen	12700072
10	Windscreen	57400185
11	Front top mount sporty wind deflector	57400244
12	Cup washer spacer (2)	58610-04