



INSTRUCTIONS

J05822

2013-06-10



XL CHROME MASTER CYLINDER AND CLUTCH BRACKET KIT

GENERAL

Kit Number

41700190, 41700262

Models

For model fitment information, see the P&A Retail Catalog or the Parts and Accessories section of www.harley-davidson.com (English only).

Additional Parts Required

Installation of this kit will also require the use of Brake Pin Grease (Part Number 42820-04) and D.O.T. 4 Hydraulic Brake Fluid (Part Number 99953-99A), available separately from any Harley-Davidson dealer.

Ask your Harley-Davidson Dealer about the selection of hand control levers, and braided brake lines and clutch cables that are also available for these models. These items can be easily installed at the same time as this kit.

⚠ WARNING

Rider and passenger safety depend upon the correct installation of this kit. Use the appropriate service manual procedures. If the procedure is not within your capabilities or you do not have the correct tools, have a Harley-Davidson dealer perform the installation. Improper installation of this kit could result in death or serious injury. (00333b)

NOTE

This instruction sheet references service manual information. A service manual for your model motorcycle is required for this installation and is available from a Harley-Davidson Dealer.

⚠ WARNING

Brakes are a critical safety component. Contact a Harley-Davidson dealer for brake repair or replacement. Improperly serviced brakes can adversely affect brake performance, which could result in death or serious injury. (00054a)

⚠ WARNING

Do not use parts from single caliper repair kits (9/16 inch bore) on dual caliper models. Likewise, do not use parts from dual caliper repair kits (11/16 inch bore) on single caliper models. Using incorrect parts can cause brake failure, which could result in death or serious injury. (00278a)

Kit Contents

See Figure 1 and Table 1.

INSTALLATION

This kit is a direct replacement for the original equipment master cylinder and clutch bracket. Follow the instructions in the service manual to remove and install the original equipment front master cylinder and clutch bracket.



SERVICE PARTS

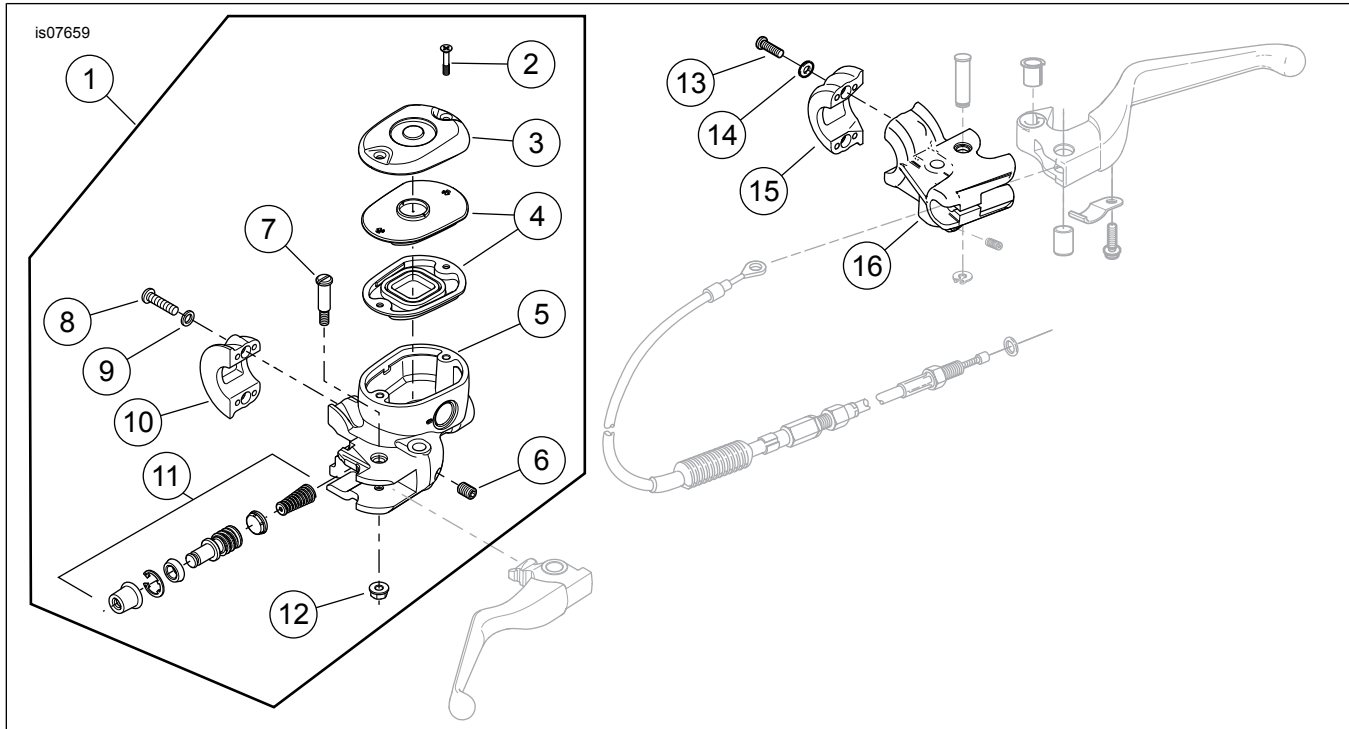


Figure 1. Service Parts: XL Chrome Master Cylinder and Clutch Bracket Kit

Table 1. Service Parts Table

Item	Description (Quantity)	Part Number
1	Master cylinder Assembly (chrome)	Not Sold Separately
2	• Screw, flat (2)	2498
3	• Cover, front master cylinder (chrome)	42318-04
4	• Gasket kit, master cylinder	42805-04
5	• Master cylinder, front, single disc (chrome)	Not Sold Separately
6	• Set screw	Not Sold Separately
7	• Front master cylinder pivot pin bolt (chrome)	41700252
8	• Screw (2)	2472M
9	• Washer (2)	6099
10	• Clamp, half (chrome)	Not Sold Separately
11	• Rebuild kit, front master cylinder, single disc, non-ABS	41700087
	• Rebuild kit, front master cylinder, single disc, ABS	41700084
12	• Front master cylinder pivot pin nut	41700253
13	Screw (2)	2472M
14	Washer (2)	6099
15	Half clamp, clutch (chrome)	Not Sold Separately
16	Clutch lever bracket (chrome)	Not Sold Separately
17	Brake line gasket (not shown) (2)	41756-08