



INSTRUCTIONS

J06012

2014-05-12



CHROME BRAKE AND CLUTCH MASTER CYLINDER/RESERVOIR KIT

GENERAL

Kit Number

36700100

Models

For model fitment information, see the P&A Retail Catalog or the Parts and Accessories section of www.harley-davidson.com (English only).

Installation Requirements

⚠ WARNING

When any hydraulic brake component, line or connection is loosened or replaced on an ABS motorcycle, Digital Technician II must be used during the brake bleeding procedure to verify all air is removed from the system. Failure to properly bleed the brake system could adversely affect braking, which could result in death or serious injury. (00585c)

⚠ WARNING

Rider and passenger safety depend upon the correct installation of this kit. Use the appropriate service manual procedures. If the procedure is not within your capabilities or you do not have the correct tools, have a Harley-Davidson dealer perform the installation. Improper installation of this kit could result in death or serious injury. (00333b)

NOTE

This instruction sheet references service manual information. A service manual for your model motorcycle is required for this installation. One is available from a Harley-Davidson dealer.

⚠ WARNING

Brakes are a critical safety component. Contact a Harley-Davidson dealer for brake repair or replacement. Improperly serviced brakes can adversely affect brake performance, which could result in death or serious injury. (00054a)

Fresh, uncontaminated D.O.T. 4 brake fluid from a sealed container is required. GM-40M grease (2 gram bag, part number 42820-04) is also needed. These items are available from a Harley-Davidson Dealer.

If the original brake and clutch levers are reused, new retaining rings (Harley-Davidson Part Number 11143) must be installed.

Kit Contents

See Figure 1 and Table 1.

INSTALLATION

Prepare Motorcycle for Service

⚠ WARNING

To prevent accidental vehicle start-up, which could cause death or serious injury, remove main fuse before proceeding. (00251b)

1. Remove main fuse.

Remove and Install Clutch Lever Bracket

1. See the service manual and following the procedures.

Remove and Install Front Brake Fluid Reservoir

1. See the service manual for the following procedures:
 - a. Remove the stock brake fluid reservoir.
 - b. Install brake fluid reservoir.
 - c. Fill brake fluid reservoir with **new** DOT 4 brake fluid.
 - d. Bleed the front brake system.

Return the Motorcycle to Service

1. Install the main fuse.
2. Apply brakes to check proper lamp operation.

⚠ WARNING

Be sure that no lubricants or fluids get on tires, wheels or brakes when changing fluid. Traction can be adversely affected, which could result in loss of control of the motorcycle and death or serious injury. (00047d)

⚠ WARNING

After repairing the brake system, test brakes at low speed. If brakes are not operating properly, testing at high speeds can cause loss of control, which could result in death or serious injury. (00289a)

3. Test ride motorcycle at low speed.
 - a. Repeat the bleeding procedure if brakes feel spongy.
 - b. If the clutch drags or if the transmission shifts hard see the service manual.



SERVICE PARTS

is08372

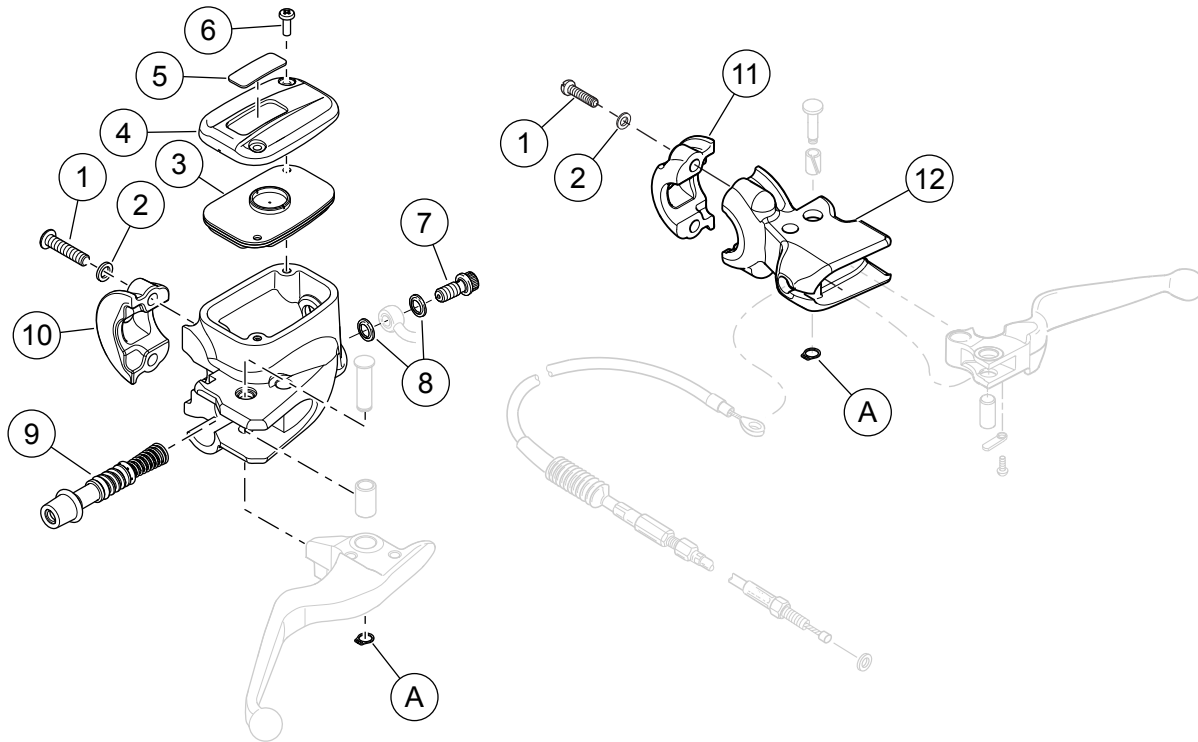


Figure 1. Service Parts: Chrome Clutch and Brake Master Cylinder/Reservoir Kit

Table 1. Service Parts: Chrome Master Cylinder/Reservoir Kit

Item	Description (Quantity)	Part Number
1	Screw, button head (4)	4293
2	Washer (4)	6099
3	Gasket	41700238
4	Cover with decal, includes items 4 and 5	41700294
5	Decal	Not Sold Separately
6	Screw (2)	10500056
7	Banjo bolt	11600001
8	Gasket, brake line	41756-08
9	Rebuild kit	41700087
10	Clamp, chrome	Not Sold Separately
11	Clamp, chrome	Not Sold Separately
12	Clutch Lever bracket	Not Sold Separately
Items mentioned in text, but not included in kit:		
A	Retaining ring	11143