



# INSTRUCTIONS

J05918

2018-09-24



## TRIKE PASSENGER ARMREST KIT

### GENERAL

#### Kit Number

52400106

#### Models

For model fitment information, see the P&A retail catalog or the Parts and Accessories section of [www.harley-davidson.com](http://www.harley-davidson.com) (English only).

#### Installation Requirements

Both LOCTITE 243 MEDIUM STRENGTH THREADLOCKER AND SEALANT (BLUE) (99642-97) and LOCTITE 262 HIGH STRENGTH THREADLOCKER AND SEALANT (RED) (94759-99) are required for proper installation of this kit.

Electrical Contact Lube (H-D Part No. 11300004) or equivalent is required for proper installation of this kit.

These items are available from a Harley-Davidson dealer.

#### ⚠ WARNING

Rider and passenger safety depend upon the correct installation of this kit. Use the appropriate service manual procedures. If the procedure is not within your capabilities or you do not have the correct tools, have a Harley-Davidson dealer perform the installation. Improper installation of this kit could result in death or serious injury. (00333b)

#### NOTE

This instruction sheet refers to service manual information. A service manual for this year/model motorcycle is required for this installation. One is available from a Harley-Davidson dealer.

#### Kit Contents

See Figure 3. and Refer to Table 1.

### PREPARATION

#### ⚠ WARNING

To prevent accidental vehicle start-up, which could cause death or serious injury, remove main fuse before proceeding. (00251b)

#### NOTE

- **WITH security siren:** With security fob present, turn ignition switch ON. See the service manual. Disarm security system. Turn ignition switch OFF. **IMMEDIATELY** remove the main fuse.
- **WITHOUT security siren:** See the service manual. Remove main fuse.

### INSTALLATION

1. **2008-2013 models:** See the service manual. Remove the Tour-Pak®. Set aside for installation. Discard the screws. **2014-later models:** See the service manual. Remove the Tour-Pak and mounting bracket assembly as a unit. Set aside for installation. Save the nuts

#### Drill Armrest Support Mounting Holes

1. **ALL models:** See Figure 3. Get the armrest support drilling template (19) from the kit. Cut out the template along the black outline (A). See Figure 1. Place the template on the top front of the vehicle body, aligning with body contours.
  - a. See Figure 3. Align the template centerline (B) with the seat mounting screw threaded hole.
  - b. Align the template forward edges (C) along the body downward curves.
  - c. Align the template sides (D) between the body upward curves.

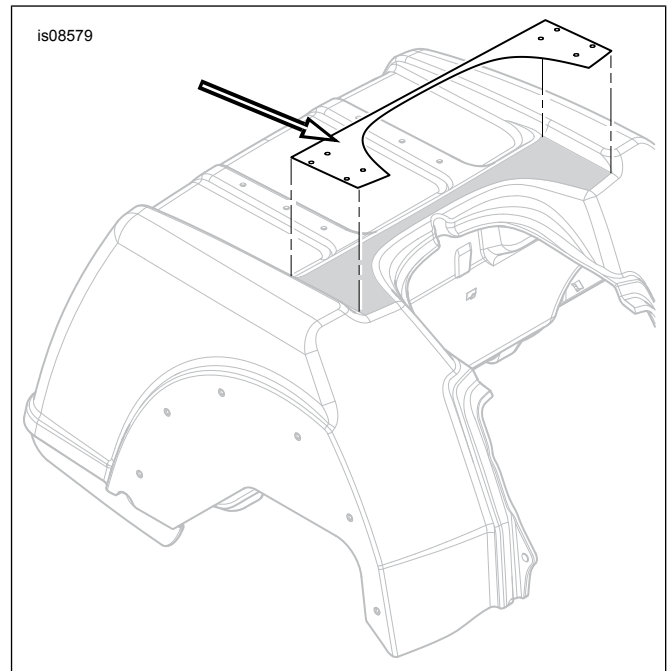


Figure 1. Armrest Support Drilling Template

2. Tape the template to the body to hold in place.
3. Drill eight pilot holes at the indicated locations (E). Enlarge the holes with a 9/32 in (K) (7.2 mm) stepped drill bit.
4. Remove the template.

## Install Armrest Support Blocks

### NOTE

Support block installation requires rear wheel and tire removal.

1. Remove rear wheel and tire. See service manual.
2. See Figure 3. Assemble an armrest support block (13\*) and pad (14). Place the assembly onto the vehicle body with the two side holes facing the vehicle center. Align the four mounting holes.
3. Get an armrest support plate (15), two short screws (16), two long screws (18) and four split lockwashers (17) from the kit. Slide a lockwasher onto the threads of each screw.
4. Apply a few drops of threadlocker to the **clean** screw threads.  
Consumable: LOCTITE 262 HIGH STRENGTH THREADLOCKER AND SEALANT (RED) (94759-99)
5. See Figure 2. Place the armrest support plate (3) on the underside of the body in the orientation shown, aligning the holes.
6. Using the longer screws (4) at the rear, fasten the armrest support block (1), pad (2) and plate (3) to the body. Tighten.  
Torque: 13.6 N·m (120 **in-lbs**) *hex socket head screw*
7. Install rear wheel and tire. See service manual.
8. Repeat steps 6-12 on the opposite side.

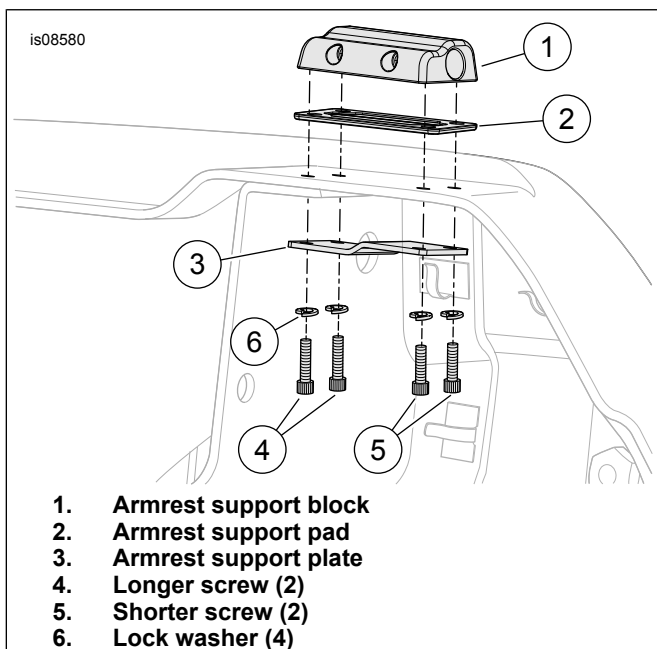


Figure 2. Armrest Support Block Installation

## Install Tour-Pak

1. Get the Tour-Pak set aside earlier. **2008-2013 models:** Get four long button head cap screws (12) from the kit. **2014-Later models:** Remove the Tour-Pak from the mounting bracket. Remove the ground plate from inside the Tour-Pak bottom.
  - a. Set the Tour-Pak onto the Tour-Pak mounting bracket. Align the holes.
  - b. Insert the screws through the ground plate and Tour-Pak bottom. Thread the screws into the nuts on the underside of the Tour-Pak mounting bracket.
  - c. Secure the screws. Tighten.  
Torque: 13.6 N·m (120 **in-lbs**) *hex socket head screw*
  - d. Turn the ground plate over, above a work surface with the stud threads facing upward.
  - e. Get a socket large enough to fit over the stud heads. Place the socket on the work surface.
  - f. Rest the ground plate on the socket so one stud head is inside the socket opening.
  - g. Lightly tap the screw end with a hammer to remove the stud. Discard the stud. Repeat for the remaining studs.
  - h. Turn the ground plate right side up. Set the ground plate inside the Tour-Pak. Align the holes.
  - i. See Figure 3. Place two armrest support adapter plates (11) on the Tour-Pak mounting rack. Align the four holes.
  - j. Get four long button head cap screws (12) from the kit. Insert the screws through the ground plate, Tour-Pak bottom and armrest support adapter plates. Thread the screws into the nuts on the underside of the Tour-Pak mounting bracket.
  - k. Secure the screws. Tighten.  
Torque: 13.6 N·m (120 **in-lbs**) *hex socket head screw*
  - l. Set the Tour-Pak and mounting bracket assembly onto the vehicle body. Align the studs into the holes. Fasten with four nuts removed earlier. Tighten.  
Torque: 13.6 N·m (120 **in-lbs**) *hex nut*

## Install Armrest Assemblies

### NOTE

The armrest assemblies are side-specific. The left knuckle bar (20) is marked "L", the right bar is marked "R".

1. Get one armrest assembly (Item 1 or 2) and two screws (18) from the kit. Apply Electrical Contact Lube (Part No. 11300004) to the armrest knuckle bar (20) before installation.
2. Slide the knuckle bar into the correct-side support (13\*) until the holes align. Apply a few drops of threadlocker to the **clean** screw threads. Insert the screws. Tighten.  
Torque: 16.3 N·m (144 **in-lbs**) *hex socket head screw*

Consumable: LOCTITE 243 MEDIUM STRENGTH  
THREADLOCKER AND SEALANT (BLUE) (99642-97)

**NOTE**

*The armrest pads are side-specific. The underside of the pad is marked "L" (left) or "R" (right). In addition, the left armrest pad (7) has an operation label (8) under the lid.*

3. Get the correct armrest pad (Item 6 or 7) from the kit. Apply Electrical Contact Lube to the linear bearing (H) before installation.
4. Install the pad assembly by carefully pushing the pin on the underside into the armrest. A slight back-and-forth rotation of the pad helps get the bearing surface into the armrest receptacle.
5. Repeat Steps 15-18 for the remaining armrest.

## COMPLETION

**NOTE**

*To prevent possible damage to the sound system, verify that the ignition switch is OFF **before** installing the main fuse.*

1. See the owner's manual. Install main fuse.

## IN USE

**IMPORTANT: After 50 mi (80 km) of travel, tighten rear wheel lug nuts per the service manual.**

**Passenger mounting and dismounting:** See label inside left armrest pad.

To minimize wear of armrest pads or backrest covering, rotate pad so nose faces straight outward or inward. Rotate arm outward.

DO NOT press down on armrest when mounting or dismounting vehicle.

Check armrest torque (rotational resistance) every service interval. Tighten bolts (5) to 27 N·m (20 ft-lbs). Then, while holding bolt, tighten each nut to 27 N·m (20 ft-lbs).

A service hardware kit (G) is available if adequate resistance cannot be achieved due to normal wear of rotating parts. When installing, apply threadlocker to **only the threads** of the shoulder bolt. Apply electrical contact lube (Part No. 11300004) to the bolt shaft and other rotating contact surfaces. Tighten bolt to 27 N·m (20 ft-lbs). Then, while holding bolt, tighten each nut to 27 N·m (20 ft-lbs). LOCTITE 262 HIGH STRENGTH THREADLOCKER AND SEALANT (RED) (94759-99)

If arms are loose after being tightened to torque specification, disassemble and realign disc spring support structure bushing and top hat. When properly installed, arms show some resistance when rotated around shoulder screw.

The pad assembly will loosen over time through normal use. A replacement linear bearing (21) and an O-ring service kit (22) are available from a Harley-Davidson dealer.

## SERVICE PARTS

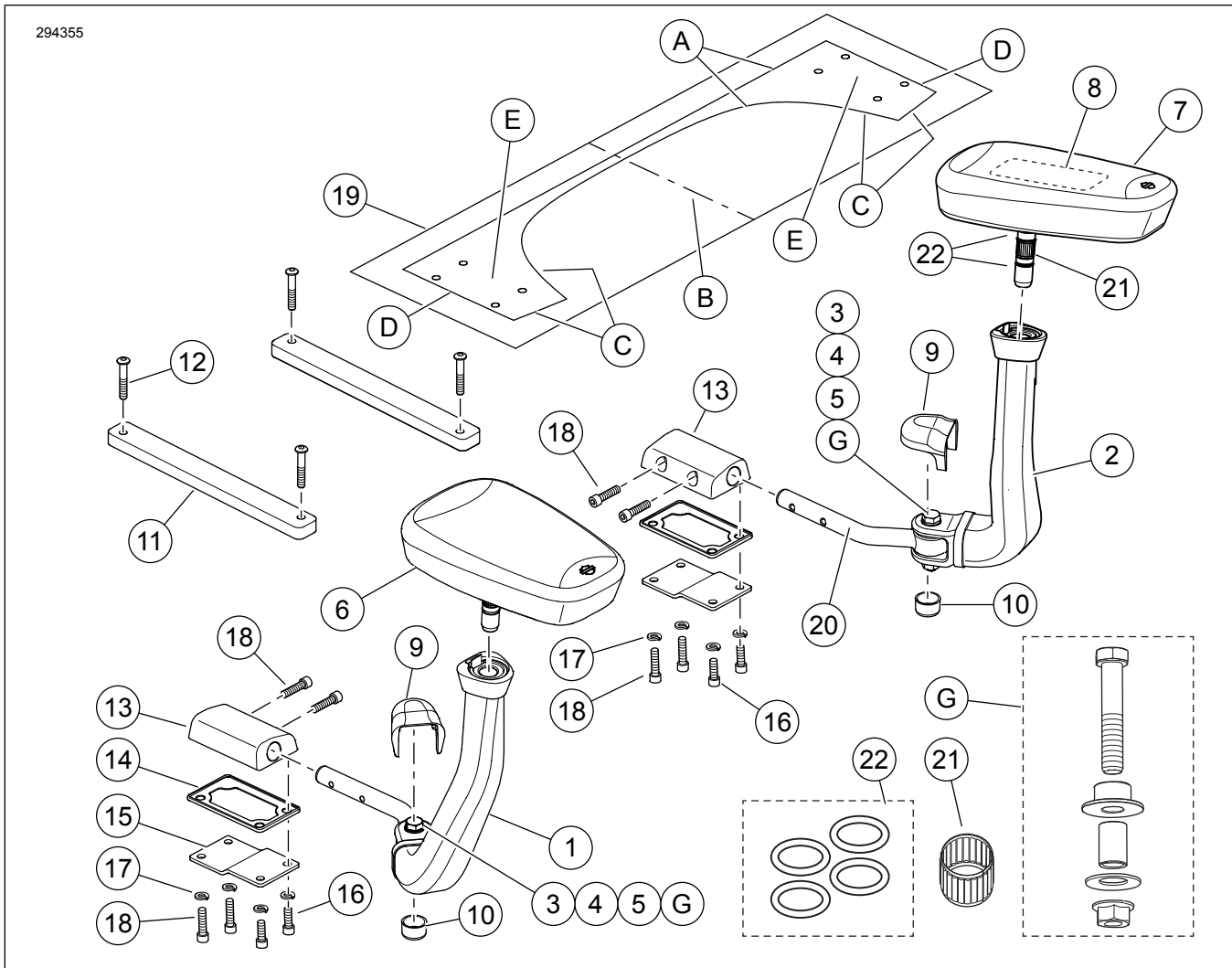


Figure 3. Service Parts, Trike Passenger Armrest Kit

## SERVICE PARTS

Table 1. Service Parts

Item	Description (Quantity)	Part Number
1	Passenger armrest assembly (right). Includes items 3-5)	Not Sold Separately
2	Passenger armrest assembly (left). Includes items 3-5)	Not Sold Separately
3	• Bushing	11000087
4	• Cap screw, hex head	9468
5	• Flanged locknut	7601
6	Passenger armrest pad (right)	52400133
7	Passenger armrest pad (left). Includes Item 8.	52400134
8	• Label, armrest operation	Not sold separately
9	Knuckle cover, passenger armrest (2)	Not sold separately
10	Nut cap (2)	Not sold separately
11	Adapter plate, armrest support (2 included in spacer kit 53000461)	Not sold separately
12	Screw, hex socket button head (4)	3088
13*	Support blocks, armrest (2) (*Hardware is under the arm rest pad)	Not Sold Separately
14	Pad, armrest support block (2)	Not Sold Separately
15	Plate, armrest support (2)	Not Sold Separately
16	Screw, hex socket button head (4)	4069A
17	Lockwasher, split, 1/4 in (8)	7036
18	Screw, hex socket button head (8)	852A

**Table 1. Service Parts**

<b>Item</b>	<b>Description (Quantity)</b>	<b>Part Number</b>
19	Template, armrest support drilling	52400120
20	Armrest knuckle bar (2)	Not Sold Separately
21	Linear bearing (2)	12600089
22	O-ring Service Kit (contains four O-rings)	11900037
<b>Items referenced in text, but not included in kit:</b>		
A	Template outline	
B	Template centerline	
C	Template forward edge	
D	Template side	
E	Pilot hole location (8)	
G	Service Hardware Kit. Part No. 91800061	