



INSTRUCTIONS

J05928

2018-10-01



BOOM! AUDIO STAGE II SADDLEBAG SPEAKER KIT

GENERAL

Dealer installation is recommended.

Kit Number

76000319B

Models

For model fitment information, see the P&A retail catalog or the Parts and Accessories section of www.harley-davidson.com (English only).

Installation Requirements

Amplifier Kit (part number 76000277B).

Amplifier Installation Kit (part number 76000745 or 76000584). These kits include all brackets, wiring, hardware and installation instructions for these kits.

Amplifier Kit and Installation Kit require installation before the Saddlebag Speaker Kit installation. Amplifier must be installed before the EQ can be loaded.

These speakers are for use **ONLY** on **2014 and later** Harley-Davidson audio systems. Using these speakers on **2006-2013** Harley-Davidson audio systems **WILL permanently damage these speakers**. Using these speakers on **2005 or earlier** Harley-Davidson audio systems **WILL permanently damage those systems**.

NOTE

DO NOT mix Stage I and Stage II speakers on the same vehicle.

NOTICE

Radio EQ MUST be updated by a Harley-Davidson dealer BEFORE operating the audio system. Operating the audio system prior to radio EQ update will IMMEDIATELY damage the speakers. (00645d)

Radio EQ update using the Digital Technician® II diagnostic tool is only available through authorized Harley-Davidson dealers. This tool is :

- Required **before** audio system OPERATION.
- Recommended **before** speaker INSTALLATION.

⚠ WARNING

Rider and passenger safety depend upon the correct installation of this kit. Use the appropriate service manual procedures. If the procedure is not within your capabilities or you do not have the correct tools, have a Harley-Davidson dealer perform the installation. Improper installation of this kit could result in death or serious injury. (00333b)

NOTE

This instruction sheet references service manual information. A service manual for this year/model motorcycle is required for this installation. One is available from a Harley-Davidson dealer.

Electrical Overload

⚠ WARNING

When installing any electrical accessory, be certain not to exceed the maximum amperage rating of the fuse or circuit breaker protecting the affected circuit being modified. Exceeding the maximum amperage can lead to electrical failures, which could result in death or serious injury. (00310a)

NOTICE

It is possible to overload the vehicle's charging system by adding too many electrical accessories. If the combined electrical accessories operating at any one time consume more electrical current than the vehicle's charging system can produce, the electrical consumption can discharge the battery and cause damage to the vehicle's electrical system. (00211d)

This amplifier requires up to **8 amps** more current from the electrical system.

The purchase of this kit entitles you to a specially developed sound equalization software that is used with the Advanced Audio System. This unique equalization was designed to optimize the performance and sound response of the BOOM! Audio fairing lower speakers. If this kit is not installed by a Harley-Davidson dealer, this special equalization software is available without charge from any dealer through Digital Technician II. Dealer labor rates may apply for the upgrade procedure.

Kit Contents

See Figure 3 and Table 1.

INSTALLATION

1. See the service manual. Remove fuse.

NOTE

Unfinished saddlebag covers must be finish painted before speaker installation.

2. Install **finish painted** Boom! saddlebag covers per the instructions in **that** kit.
3. See Figure 1. Position the smaller tweeter speaker (3) is toward the rear of the saddlebag as shown.



4. Secure the speaker (1) with the four long screws (2). Alternately tighten screws. Tighten.

Torque: 25.4–38.1 N·m (10–15 **in-lbs**) *TORX* head screw

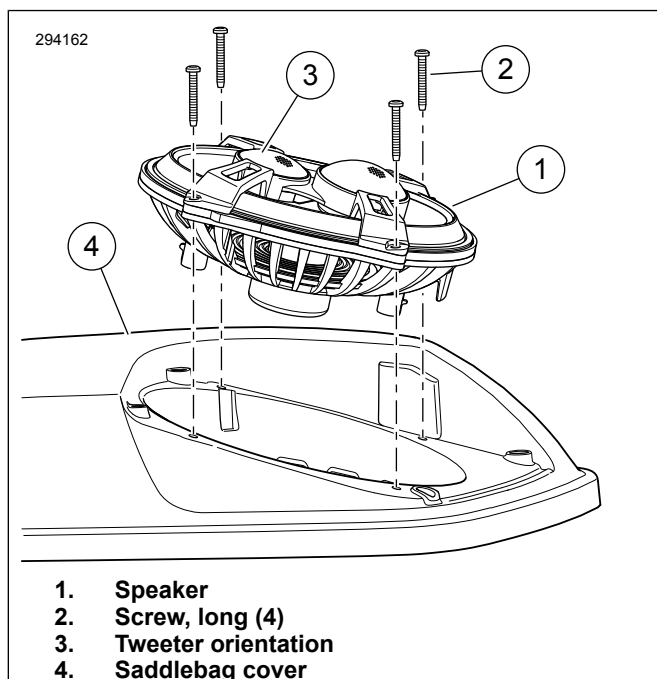


Figure 1. Speaker Orientation

5. See Figure 2. Place rubber washers (1) into the grille mount well (2).
6. Place the speaker grille (4) into position over the speaker face.
7. Secure with the four short screws (3). Alternately tighten the screws. Tighten.
Torque: 25.4–38.1 N·m (10–15 **in-lbs**) *TORX* head screw
8. Repeat steps for the opposite-side saddlebag cover.

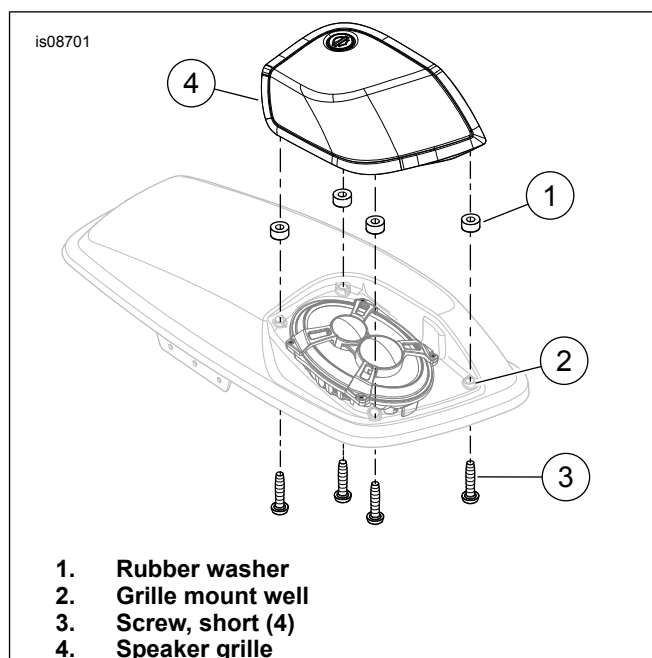


Figure 2. Grille Installation

CONNECTION

1. Connect both two-way audio connectors from the amplifier harness to the mid-range/tweeter connection and the woofer connection on the underside of the speaker. The connectors are unique and only fit one way.
2. Add cable straps and wire retainers from the Amplifier Installation Kit to retain the harness inside the saddlebag as needed.

COMPLETION

NOTE

*To prevent possible damage to the sound system, verify that the ignition is OFF **before** installing the main fuse.*

NOTICE

Radio EQ MUST be updated by a Harley-Davidson dealer BEFORE operating the audio system. Operating the audio system prior to radio EQ update will IMMEDIATELY damage the speakers. (00645d)

1. See the service manual. Install main fuse.
2. Have a Harley-Davidson dealer update the radio EQ using Digital Technician II.
3. Turn the ignition ON, but do not start the motorcycle.
4. Refer to the BOOM! BOX INFOTAINMENT SYSTEM section of the owner's manual. Turn the radio ON. Make sure that all speakers are working and front/rear fader function is operating correctly. If not, check speaker wiring.
5. See the service manual. Install seat. After installing seat, pull up on the seat to verify that it is secure.

IN USE

Avoid direct contact with speaker grilles by a pressure washer. Damage to speakers can result.

A small amount of water can at times collect in the speaker cavities while parked outdoors. The saddlebag speakers are

weatherproof, and the heat from speaker operation would soon evaporate the water. Water could be a temporary effect on sound quality. To empty the speaker cavities, open the saddlebag cover.

SERVICE PARTS

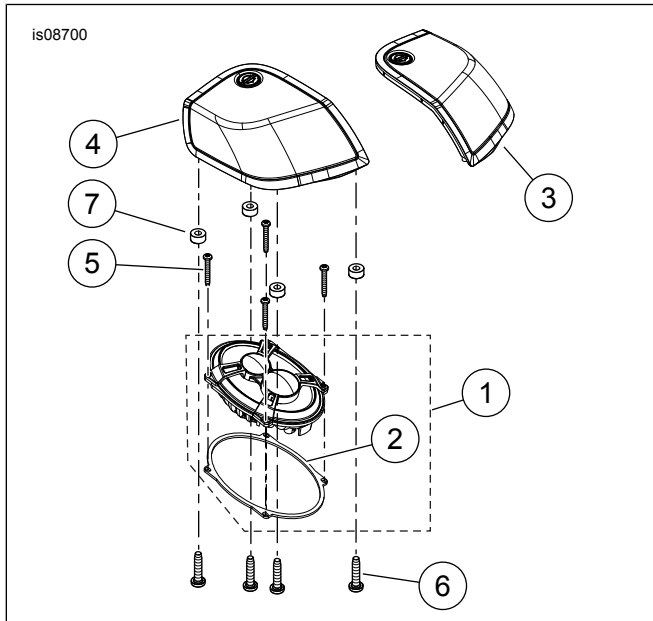


Figure 3. Service Parts, Boom! Audio Stage II Saddlebag Speaker Kit

Table 1. Service Parts

Item	Description (Quantity)	Part Number
1	Speaker assembly (2) (includes item 2)	76000333A
2	• Gasket	Not sold separately
3	Speaker grille (left)	76000417
4	Speaker grille (right)	76000418
5	Screw, TORX head, #8-18 x 1.25 in (8)	10200095
6	Screw, TORX head, #8-18 x 0.75 in (8)	10200012
7	Rubber washer (8)	10300066