



# INSTRUCTIONS

J05764

2021-01-19



## TRIGLIDE LIGHT FASCIA

### GENERAL

#### Kit Number

68000129 (Red Lens), 68000128 (Smoke Lens)

#### Models

For model fitment information, see the P&A Retail Catalog or the Parts and Accessories section of [www.harley-davidson.com](http://www.harley-davidson.com) (English only).

#### Additional Parts Required

##### ⚠ WARNING

Rider and passenger safety depend upon the correct installation of this kit. Use the appropriate service manual procedures. If the procedure is not within your capabilities or you do not have the correct tools, have a Harley-Davidson dealer perform the installation. Improper installation of this kit could result in death or serious injury. (00333b)

##### NOTE

This instruction sheet references service manual information. A service manual for your model motorcycle is required for this installation and is available from a Harley-Davidson Dealer.

### Kit Contents

See Figure 4 and Table 1.

### PREPARE

##### ⚠ WARNING

To prevent accidental vehicle start-up, which could cause death or serious injury, remove main fuse before proceeding. (00251b)

1. Remove main fuse. See service manual.
2. Remove seat. See service manual.
3. Remove left wheel. See service manual.

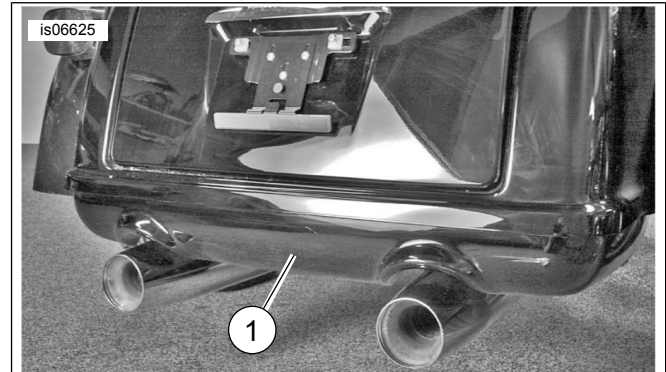
### INSTALLATION

##### NOTE

Do not install this kit if ambient temperature is below 10 °C (50 °F).

1. See Figure 1 and Figure 4. Install chrome fascia against muffler skirt (1).
  - a. Make sure that fascia is centered and top edge contacts underside of body lip.

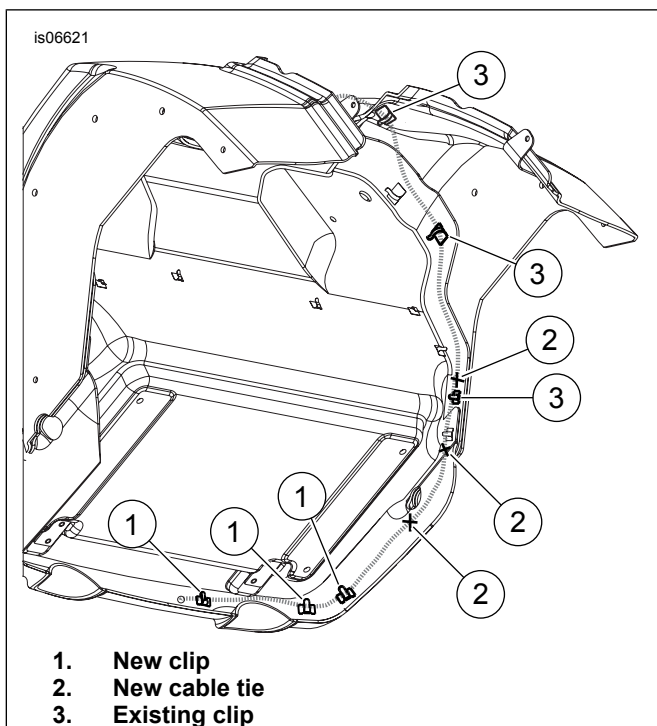
- b. Do not remove backing from adhesive pads.
- c. Temporarily tape or hold fascia in place.



1. Muffler skirt

Figure 1. Muffler skirt

2. Mark muffler skirt using three holes in fascia as a template.
3. Remove fascia and drill a 7/32 inch hole at each outer mark and a 3/8 inch hole at center mark. Verify that drilled holes are parallel with ground.
4. Thoroughly clean outer surface and left inner surface of muffler skirt with a 50/50 mix of isopropyl alcohol and water. Let dry completely.
5. Remove backing from adhesive pads on fascia.
6. Align fascia holes with drilled holes in muffler skirt. Press and hold fascia against skirt for one minute.
7. See Figure 4. Bolt fascia in place using socket head screw (5) and nut (3). Tighten.  
Torque: 2.3 N·m (20 in-lbs)
8. Feed wiring of LED assembly (2) through center hole in fascia. Install assembly with screws (4). Tighten.  
Torque: 1.7 N·m (15 in-lbs)
9. See Figure 2. Using provided adhesive backed clips, existing body clips and cable straps, route wiring along the inside of the body as shown exiting under seat area.



**Figure 2. Wire Harness Routing (Underneath view of trike body. All chassis components removed for clarity)**

10. See Figure 4. Insert terminal pins into connector (10) as detailed below:

- Blue = Cavity 3
- Red/Yellow = Cavity 4
- Black = Cavity 6
- Cavities 1, 2, 5 are not used

11. See Figure 3. Disconnect rear lighting connector [7A/B]. Plug Y-harness between main harness and rear lighting harness.

12. **NOTE**

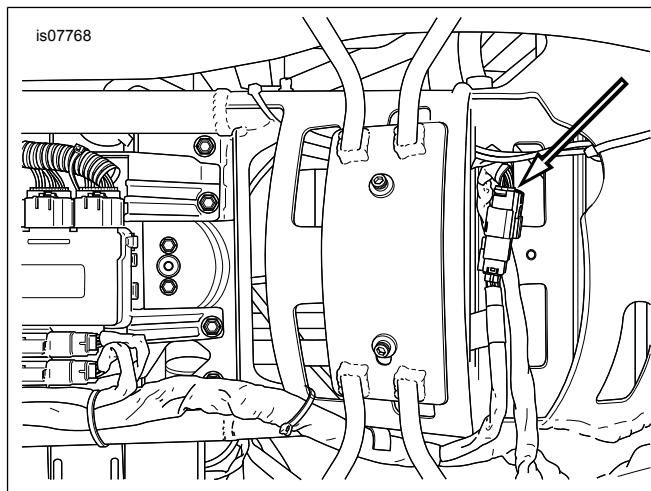
*Wire colors of connector (10) will not always match wire colors of mating connector.*

Plug connector (10) into Y-harness.

13. Use remaining cable straps to secure Y-harness and LED wiring to adjacent wiring or frame members. Make sure wiring and connectors do not interfere with seat installation

14. Verify rear lighting operation:

- a. With ignition on, LED assembly is illuminated.
- b. With brakes applied, LED assembly is brightly illuminated.



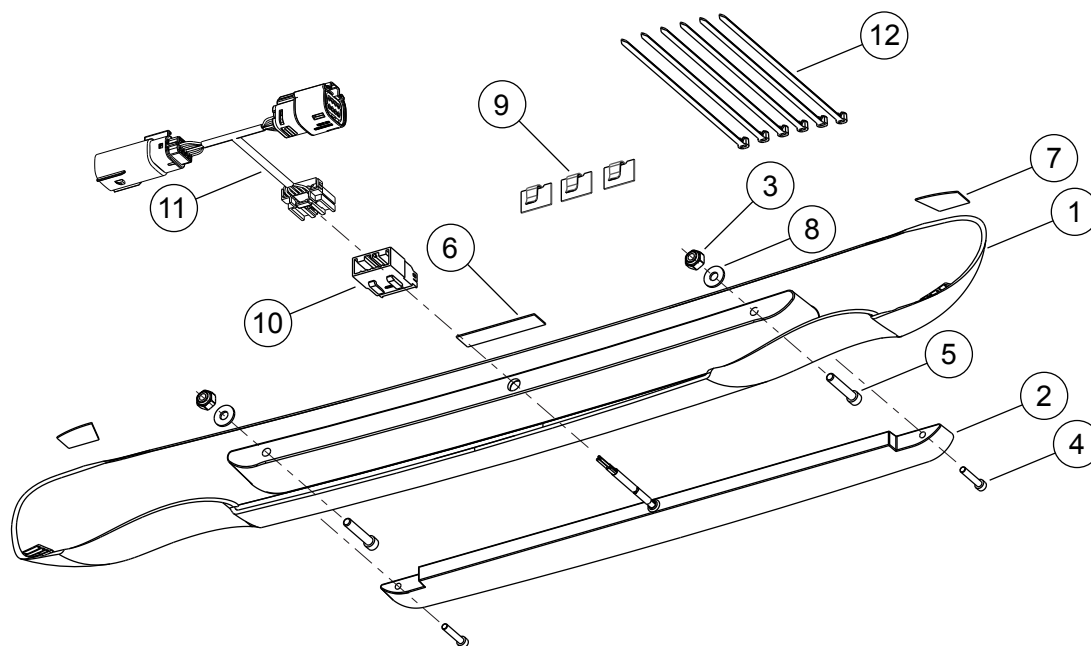
**Figure 3. Rear Lighting Connector**

## COMPLETE

1. Install left wheel. See service manual.
2. Install seat. After installing seat, pull up on seat to verify that it is secure. See service manual.
3. Install main fuse. See service manual.

## SERVICE PARTS

is07771



**Figure 4. Service Parts: TRIGLIDE Light Fascia**

**Table 1. Service Parts Table**

Kit	Item	Description (Quantity)	Part Number
68000129	1	Fascia, chrome plated	Not Sold Separately
	2	LED rear light insert, red lens	84025-11
68000128	1	Fascia, chrome plated	Not Sold Separately
	2	LED rear light insert, smoke lens	84026-11
<b>Items common to both kits:</b>			
	3	Nut, nyloc, #10-24 (2)	Not Sold Separately
	4	Socket head screw, #6-32 x 75 (2)	Not Sold Separately
	5	Socket head screw, #10-24 x 1.25 (2)	Not Sold Separately
	6	Tape, double-coated foam	Not Sold Separately
	7	Tape, double-coated foam (2)	Not Sold Separately
	8	Washer, flat (2)	Not Sold Separately
	9	Wire clip (3)	10102
	10	Six pin connector	73106-96BK
	11	Y-Harness	69200795
	12	Cable strap (6)	10065