



INSTRUCTIONS

J06035

2014-03-21



RIGID SEAT MOUNTING KIT

GENERAL

Kit Number

52100016

Models

For model fitment information, see the P&A retail catalog or the Parts and Accessories section of www.harley-davidson.com (English only).

Installation Requirements

Separate purchase of a Solo Saddle is required for proper installation of this kit. See a Harley-Davidson dealer, the P&A retail catalog or the Parts and Accessories section of www.harley-davidson.com (English only) for available saddles.

⚠ WARNING

Rider and passenger safety depend upon the correct installation of this kit. If the procedure is not within your capabilities or you do not have the correct tools, have a Harley-Davidson dealer perform the installation. Improper installation of this kit could result in death or serious injury. (00308b)

Kit Contents

See Figure 2 and Table 1.

INSTALLATION

1. Follow owner's manual instructions to remove the existing seat.
2. See Figure 1. Remove and discard seat post (1), washer (2) and screw (3), grommet (5) and tee spacer (4) from the rear fender.

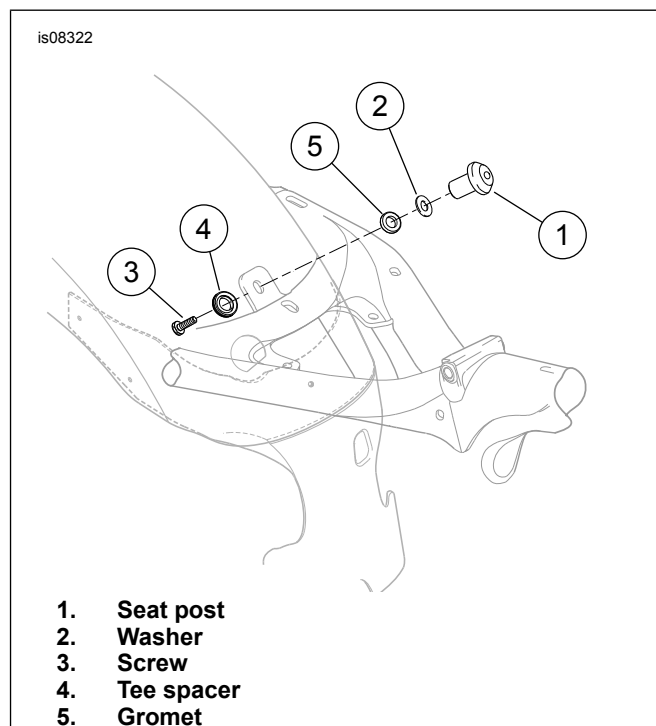


Figure 1. Seat Post and Mounting Hardware

3. See Figure 2. Install the saddle pivot bracket (1) to the saddle with three washers (2) and screws (3). Tighten the screws to 5.5–8 N·m (48–72 in-lbs).
4. Remove the rear fuel tank mounting screw, washers, nut and thread protector.
5. Install bushings (5) into the pivot bracket from the inside.
6. Install washer (8) and a sleeve spacer (7) from the kit onto stud (4). Insert the stud through the right side of the pivot bracket. Install a thin spacer (6) onto the stud.
7. Install the pivot bracket over the rear fuel tank mounting point (B).
8. Install a thin spacer (6) between the left side of the fuel tank mounting point and the left bushing. Slide the stud through the left side of the pivot bracket.
9. Add spacer and washer to the left side. Center the stud. Secure the stud with nuts (9). Tighten the nuts to 20–27 N·m (15–20 ft-lbs).



10. Install bracket (10) to seat. **Seats with 1/2 in hole:** secure with screws (14). Tighten the screws to 14–16 N·m (120–144 in-lbs). **Seats with 3/8 in hole:** secure with screws (13), washer (12) and spacer (11). Tighten the screws to 14–16 N·m (120–144 in-lbs).
11. Secure seat mount bracket to seat mount tab (C) with screw (15). Tighten the nuts to 20–27 N·m (15–20 ft-lbs).

Table 1. Service Parts

Item	Description (Quantity)	Part Number
Items mentioned in text, but not included in kit.		
A	Solo saddle	
B	Rear fuel tank mount	
C	Seat mount tab	

⚠ WARNING

After installing seat, pull upward on seat to be sure it is locked in position. While riding, a loose seat can shift causing loss of control, which could result in death or serious injury. (00070b)

SERVICE PARTS

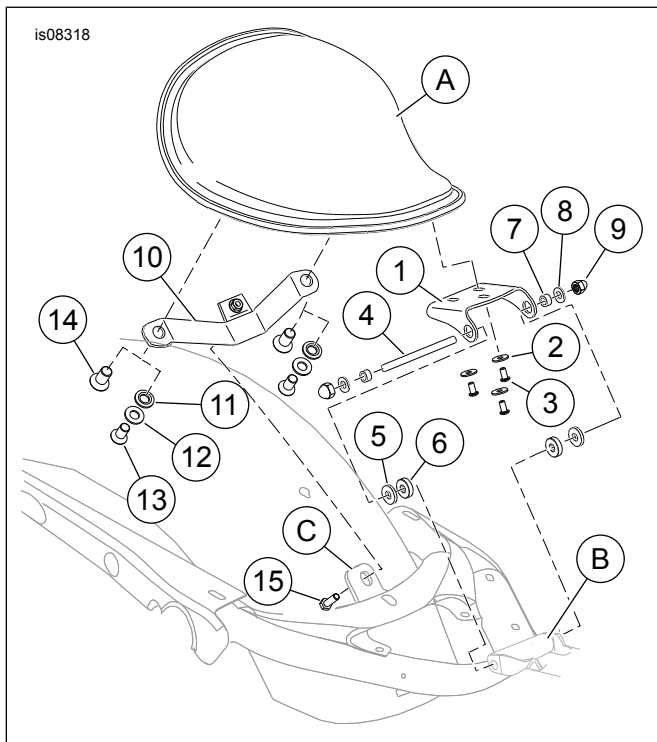


Figure 2. Service Parts: Rigid Seat Mounting Kit

Table 1. Service Parts

Item	Description (Quantity)	Part Number
1	Saddle pivot bracket	Not sold separately
2	Washers (3)	Not sold separately
3	Screw, button head (3)	3063
4	Stud	Not sold separately
5	Bushing, seat pivot (2)	Not sold separately
6	Spacer, seat pivot mount (2)	Not sold separately
7	Spacer (2)	Not sold separately
8	Washer (2)	Not sold separately
9	Acorn nut (2)	8196
10	Seat mount bracket	Not sold separately
11	Spacer, seat support (2)	Not sold separately
12	Washer (2)	6701
13	Screw, 3/8 in, hex, button head (2)	Not sold separately
14	Screw, 1/2 in, hex, button head (2)	Not sold separately
15	Screw, hex	4017