



INSTRUCTIONS

J05467

2011-07-01



FRONT TURN SIGNAL RELOCATION KIT

GENERAL

Kit Number

69433-08A

Models

For model fitment information, see the P&A Retail Catalog or the Parts and Accessories section of www.harley-davidson.com (English only).

Additional Parts Required

⚠ WARNING

Rider and passenger safety depend upon the correct installation of this kit. Use the appropriate service manual procedures. If the procedure is not within your capabilities or you do not have the correct tools, have a Harley-Davidson dealer perform the installation. Improper installation of this kit could result in death or serious injury. (00333b)

NOTE

This instruction sheet references service manual information. A service manual for your model motorcycle is required for this installation and is available from a Harley-Davidson Dealer.

Kit Contents

See Figure 8 and Table 1.

REMOVAL

⚠ WARNING

When servicing the fuel system, do not smoke or allow open flame or sparks in the vicinity. Gasoline is extremely flammable and highly explosive, which could result in death or serious injury. (00330a)

1. Purge the high-pressure fuel line and disconnect the fuel line following the instructions in the appropriate service manual.

⚠ WARNING

To prevent accidental vehicle start-up, which could cause death or serious injury, remove main fuse before proceeding. (00251b)

2. Remove the main fuse following the instructions in the appropriate service manual.
3. Remove the seat following the instructions in the appropriate service manual. Save all seat mounting hardware.

NOTE

When moving the fuel tank back, do not damage the fuel gauge wires clipped to the frame under the left side of the fuel tank.

4. Remove the front and rear fuel tank mounting hardware following the instructions in the appropriate service manual. Move the fuel tank back on the frame to gain access to the tabs on the steering head harness shield.
5. See Figure 1. Disengage the tabs (2) from the holes (3) on each side of the frame and remove the shield (1).
6. **All Models Except 2012 and Later Dyna Models with Internally Wired Handlebars:** Pull the wire harness down from inside the frame enough to disconnect the white (left) [31L] and black (right) [31R] 3-place turn signal connectors. Set aside the frame-side connector halves.
7. **All Models Except 2012 and Later Dyna Models with Internally Wired Handlebars:** Remove the socket terminals from the lamp-side connector halves following the instructions in the appropriate service manual. Make note of the wire colors installed in the cavities of each connector, which **should** be: Left side (white connector): Right side (black connector):
 - a. Black [BK] wire in cavity 1
 - b. Violet [V] wire in cavity 2
 - c. Blue [BE] wire (if installed) in cavity 3
 - d. Black [BK] wire in cavity 1
 - e. Brown [BN] wire in cavity 2
 - f. Blue wire [BE] (if installed) in cavity 3



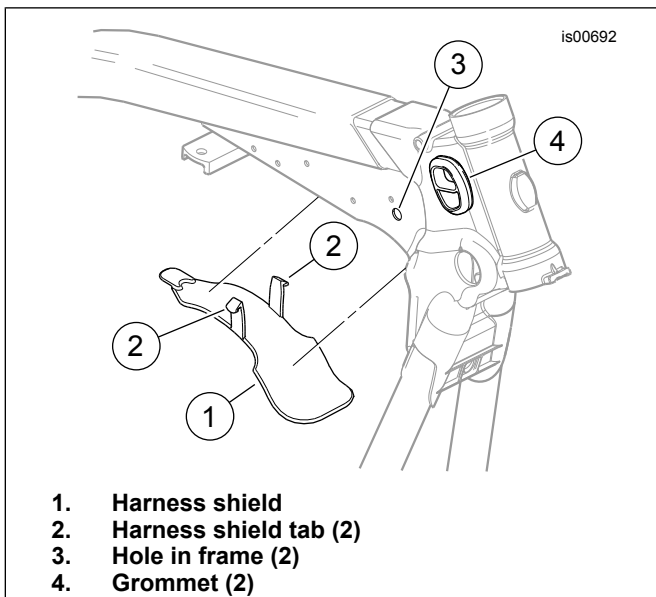


Figure 1. Harness Shield Removal

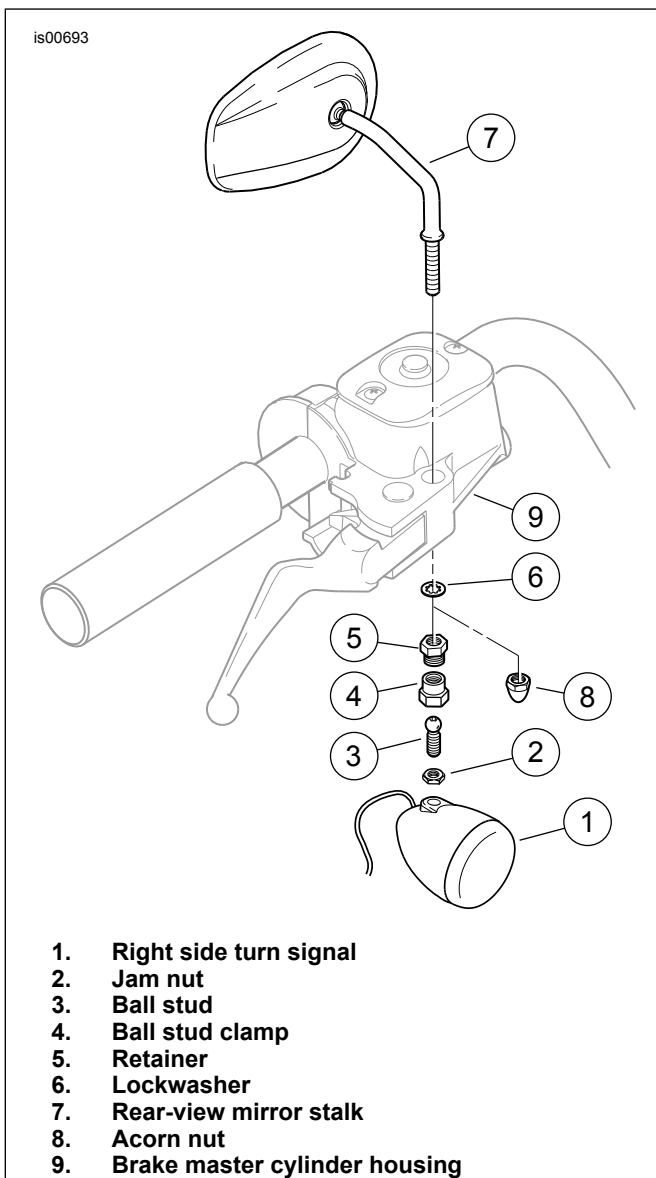


Figure 2. Right Side Turn Signal Removal

8. See Figure 2. Loosen the jam nut (2).
9. Remove the ball stud clamp (4) from the retainer (5). Discard ball stud clamp.
10. Remove and discard the ball stud (3) and jam nut from the right side turn signal (1). Remove the turn signal lamp and allow it to hang down, taking care not to damage any surfaces.
11. Remove the retainer (5) and lockwasher (6) from the rear-view mirror stalk (7). Discard the lockwasher and retainer.
12. See Figure 3. Loosen the jam nut (2).
13. Remove the ball stud clamp from the ball receptacle (5). Discard the ball stud clamp. Unscrew and discard the ball stud (3) and jam nut from the left-side turn signal (1). Remove the turn signal lamp and allow it to hang down, taking care not to damage any surfaces.

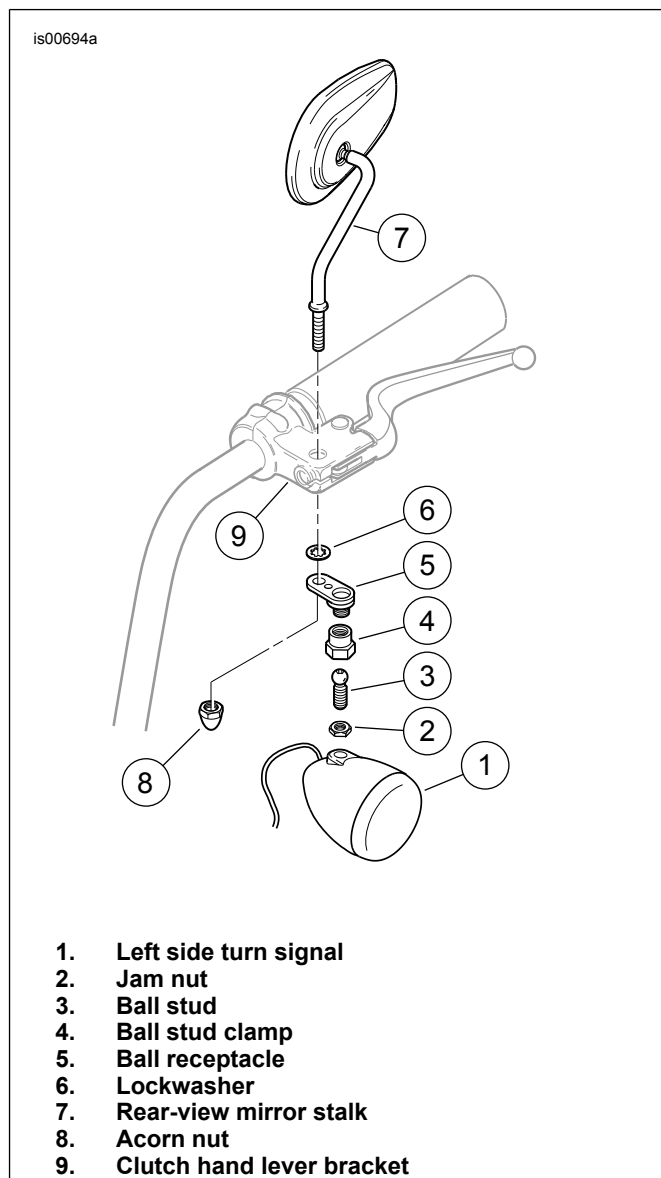


Figure 3. Left Side Turn Signal Removal

- Remove the acorn nut (8), ball receptacle and lockwasher (6) from the rear view mirror stalk (7). Discard the ball receptacle, lockwasher and acorn nut.

Models with Turn Signal Wires Outside the Handlebar

- While supporting the turn signal lamp, pull the turn signal wires upward and outward through the wire retainers.
- Set the signal lamps and wires aside for installation.

2012 and Later Dyna Models with Turn Signal Wires Inside the Handlebar

- See Figure 4. Cut the turn signal wires and conduit flush with the grommet (1) on the underside of the handlebar lower switch housing (2).
- Separate the upper (3) and lower switch housings per service manual instructions.
- Remove the grommet from the end of the turn signal wire vinyl conduit (4) still connected to the switch housing.
- Make about a 25 mm (1 in) long slit in the end of the conduit. Cut one wire back about 12 mm (1/2 in) from the end of the conduit. Cut the second wire back about 6 mm (1/4 in) from the end of the conduit.
- Slip the 50.8 mm (2 in) long section of encapsulating (dual wall) shrink tube (5) over the conduit and wires.

▲ WARNING

Be sure to follow manufacturer's instructions when using the UltraTorch UT-100 or any other radiant heating device. Failure to follow manufacturer's instructions can cause a fire, which could result in death or serious injury. (00335a)

- Avoid directing heat toward any fuel system component. Extreme heat can cause fuel ignition/explosion resulting in death or serious injury.
 - Avoid directing heat toward any electrical system component other than the tubing on which heat shrink work is being performed.
 - Always keep hands away from tool tip area and heat shrink attachment.
- Use a heat gun or suitable radiant-heating device to shrink the tubing to the wires and conduit.
 - Assemble the switches and switch housings to the handlebar per service manual instructions, tucking the shrink-sealed wire ends back inside the switch housings. Repeat on the opposite side of the vehicle.
 - Repeat for the other turn signal.

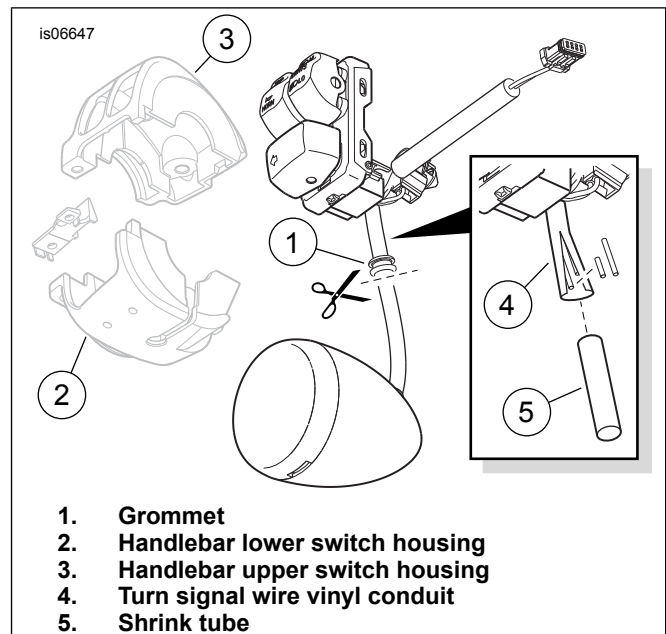


Figure 4. Cut Turn Signal From Switch Assembly

INSTALLATION

- ALL models:** See Figure 2. Fasten the mirror stalk to the front brake master cylinder housing (9) with the acorn nut (8) and lockwasher (6) from the kit, but do not fully tighten at this time.
- See Figure 3. Fasten the mirror stalk to the clutch hand lever bracket (9) with the acorn nut (8) and lockwasher (6) from the kit, but do not fully tighten at this time.
- 2012 and Later Dyna Models with Turn Signal Wires Inside the Handlebar:** See Figure 5. Replace the reflector socket of the turn signal as follows:
 - Remove the turn signal lens (5) and bulb (4).
 - Pry the reflector socket (3) and grommet from (2) the turn signal housing (1).
 - Remove the socket and wire from the the grommet and housing.
 - Route the harness of the new socket through the grommet and housing.
 - Install the grommet and socket into the housing.
 - Install bulb in socket.
 - Install lens to the housing.

NOTE

See Figure 6. The mounting brackets are stamped with either LH (left side) or RH (right side). Be sure to install the correct bracket on the correct side.

Both left side and right side turn signal lamps are identical.

The wire harness exiting the turn signal lamp has a flat cross-section, similar to the wire slot (3) near the lamp end of the stalk.

For best appearance, align the harness along its full length to determine the flat side that will lie against the stalk when the lamp is attached. Insert the harness into the slot in **that** orientation to avoid a half-twist in the wire harness at the lamp.

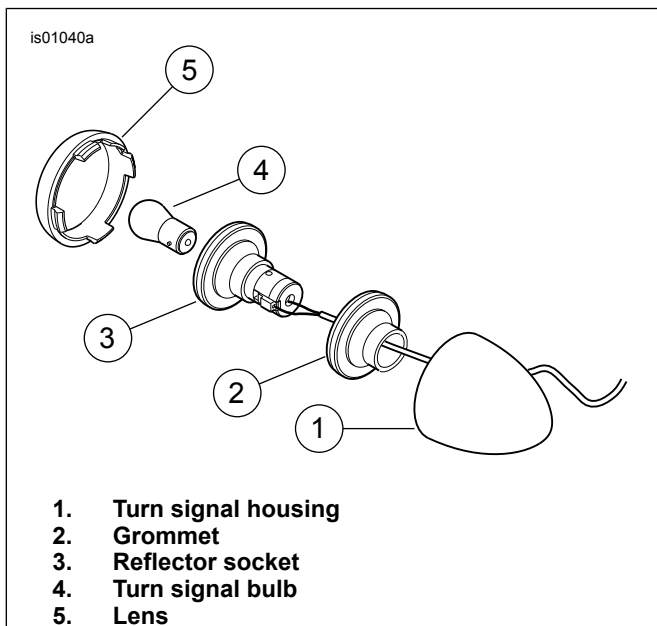


Figure 5. Front Turn Signal

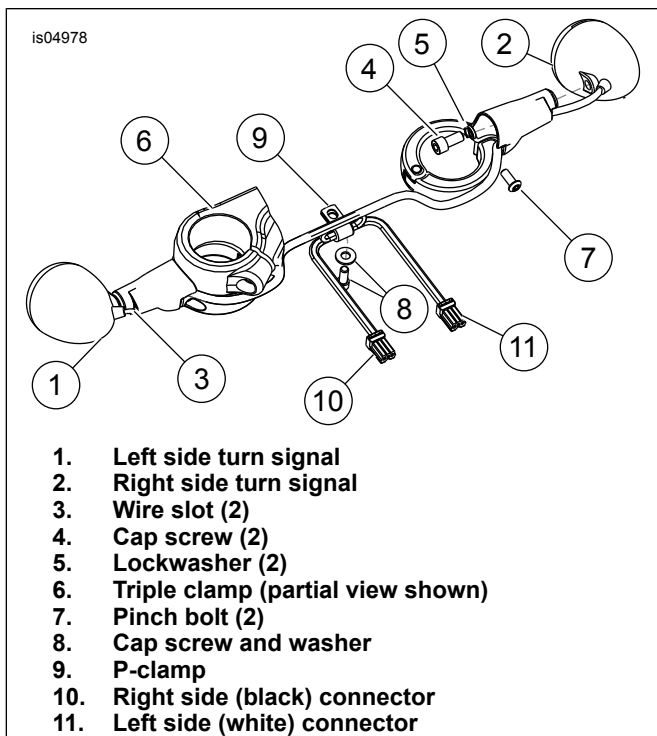


Figure 6. Installation of Mounting Bracket and Wire Harness

4. **ALL models:** See Figure 6. Carefully feed the length of wire from the turn signal lamp into the stalk through the wire slot (3).
5. Install the screw (4) and lockwasher (5) into the stalk and through the hole. Position the turn signal lamp against the end of the stalk and thread the screw into the lamp housing. Do not fully tighten at this time.

6. Place the mounting bracket in position on the lower fork below the triple clamp (6). Align the lamp to face forward, and parallel to the ground. While holding the alignment, remove the assembly and tighten the lamp mounting screw (4) to 8–9 N·m (70–80 **in-lbs**).
7. Install the mounting bracket assembly to the lower fork with a pinch bolt (7), ensuring:
 - a. That the lamp is facing forward and parallel to the ground.
 - b. Verify that the exiting wire is centered in the wire-notch (3) at the stalk base and is not being pinched by the stalk against the fork bracket.
8. Tighten the pinch bolt (7) to 8–9 N·m (70–80 **in-lbs**).
9. Repeat Steps 4-8 for the opposite side.
10. Remove the cap screw and washer (8) that mount the front brake line(s) to the underside of the lower fork bracket, and set aside.
11. Loosely install the P-clamp (9) and the brake line with the cap screw and washer (8).

NOTE

P-clamp orientation should be opposite of the brake-line mounting.

12. See Figure 7. Route the wires behind the fork tubes. Feed both signal wires through the P-clamp in the direction opposite that from which they originated, so the wire is heading back toward its own turn signal lamp.

NOTE

Make sure the wires are not pulled tight when the handlebars are turned full to the left or right fork stops.

13. Pull the wires through the P-clamp so they are just pulled taut and tighten the cap screw to 11.3–13.6 N·m (8.3–10 **ft-lbs**). The wires from the right-side turn signal should now be toward the right side of the vehicle, and the left-side wires toward the left.

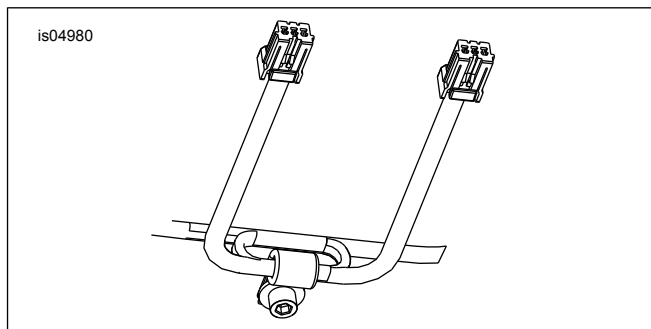


Figure 7. Routing the Wires

14. See Figure 6. Install the socket terminals from the the turn signal harnesses into the correct lamp side connector halves following the instructions in the appropriate service manual. Unless noted differently on removal, Left side (white connector) (11): Right side (black connector) (10):
 - a. Black [BK] wire in cavity 1
 - b. Violet [V] wire in cavity 2
 - c. Blue [BE] wire (if installed) in cavity 3
 - d. Black [BK] wire in cavity 1
 - e. Brown [BN] wire in cavity 2
 - f. Blue wire [BE] (if installed) in cavity 3
15. See Figure 1. Feed the assembled right side turn signal connector, from the outside, through the grommet (4) in the right side of the frame, behind the steering head. Feed the assembled left side connector through the grommet in the left side of the frame.
16. Connect the left and right connector halves to the same-color mating connector halves coming from the frame.
17. Temporarily install the main fuse following the instructions in the appropriate service manual.
18. **2012 and Later Dyna Models with Internally Wired Handlebars:** Perform BCM front turn signal auto-learn procedure as follows:
 - a. See owner's manual and activate the hazard warning lights for at least 10 flashes, which allows the system to verify turn signal bulb operation.
 - b. Deactivate hazard warning lights.
 - c. Activate the hazard warning lights for at least 10 flashes to allow BCM to auto-learn new turn signal connections.
 - d. See the service manual and clear any BCM codes.
 - e. Turn the ignition switch to the IGN position, then back to OFF.
 - f. Activate hazard warning lights and verify that no BCM fault codes are returned.
19. Test the turn signals to verify that they function correctly.

⚠ WARNING

To prevent accidental vehicle start-up, which could cause death or serious injury, remove main fuse before proceeding. (00251b)

20. Remove the main fuse.

⚠ WARNING

Be sure that steering is smooth and free without interference. Interference with steering could result in loss of vehicle control and death or serious injury. (00371a)

- Be sure wires do not pull tight when handlebars are turned fully to left or right fork stops.
21. Use cable straps from the kit as needed to secure the harnesses so they do not interfere with steering function, or become entangled or pinched. Secure any excess harness length with a cable strap so it can be stowed inside the steering head.

22. Push the wire harness back up inside the frame, behind the steering head. Position the harness shield (1) to the underside of the top bar with the tabs (2) inside, and push upward until the tabs engage the holes (3) on each side of the frame.

⚠ WARNING

When servicing the fuel system, do not smoke or allow open flame or sparks in the vicinity. Gasoline is extremely flammable and highly explosive, which could result in death or serious injury. (00330a)

23. Install the fuel tank and connect the fuel line following the instructions in the appropriate service manual.
24. Install the main fuse.
25. Install the seat following the instructions in the appropriate service manual.

⚠ WARNING

After installing seat, pull upward on seat to be sure it is locked in position. While riding, a loose seat can shift causing loss of control, which could result in death or serious injury. (00070b)

26. Adjust the mirrors for proper field of vision and tighten the acorn nuts to 16 N·m (12 ft-lbs). Check mirror adjustment and reposition if necessary.

SERVICE PARTS

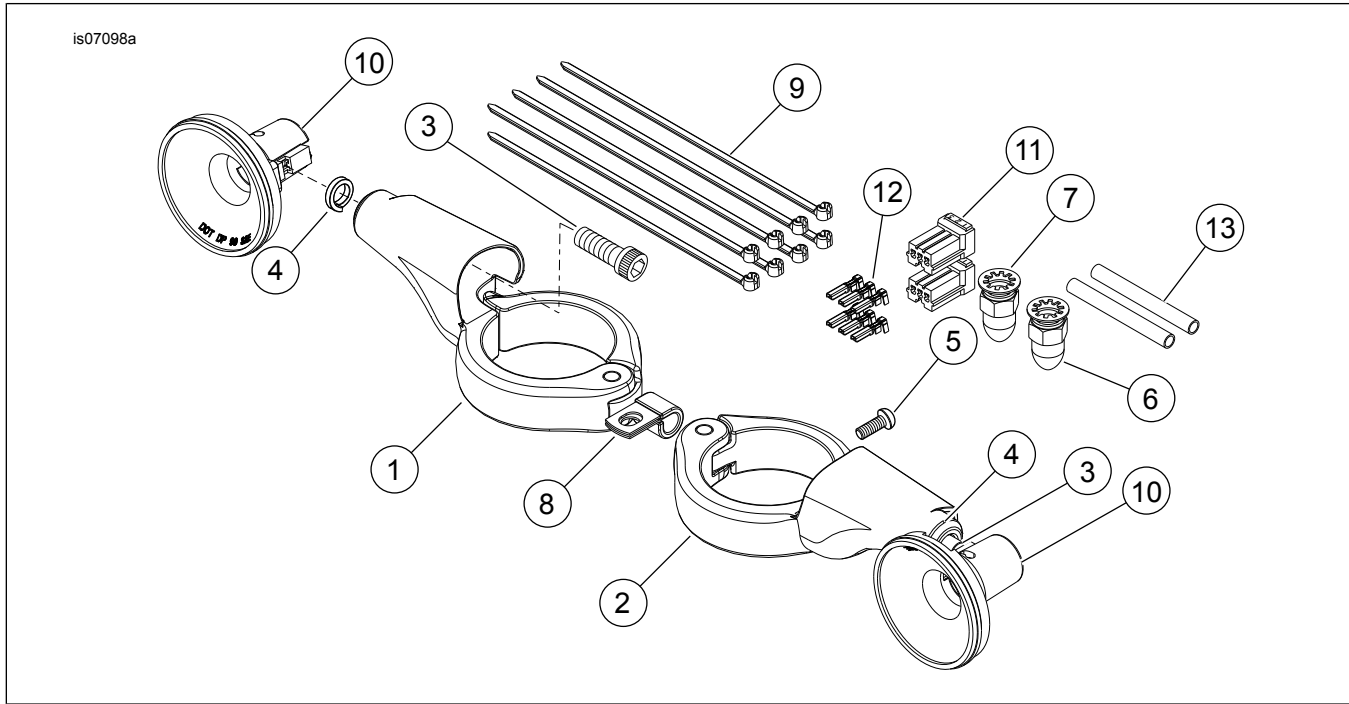


Figure 8. Service Parts: Front Turn Signal Relocation Kit

Table 1. Service Parts Table

Item	Description (Quantity)	Part Number
1	Stalk, front turn signal relocation (right)	Not Sold Separately
2	Stalk, front turn signal relocation (left)	Not Sold Separately
3	Socket head cap screw, 5-16-24 x 5/8 in., Grade 8 (2)	2698A
4	Lock washer, split, 5/16 in. (2)	7042
5	Screw, button head (2)	926
6	Nut, acorn 5/16-24 chrome (2)	7720
7	Washer, star lock, 5/16 inch	7127
8	P-clamp, 0.31 nominal diameter	10059A
9	Cable strap (8)	10065
10	Socket assembly (2)	68904-00
11	Socket terminal housing (2)	73153-96BK
12	Terminal, socket (6)	73191-96
13	Tube, shrink (2)	72411-97