



INSTRUCTIONS

J06338

2016-08-22



CHROME BRAKE AND CLUTCH MASTER CYLINDER/RESERVOIR KIT

GENERAL

Kit Number

41700441

Models

For model fitment information, see the P&A Retail Catalog or the Parts and Accessories section of www.harley-davidson.com (English only).

Installation Requirements

⚠ WARNING

When any hydraulic brake component, line or connection is loosened or replaced on an ABS motorcycle, Digital Technician II must be used during the brake bleeding procedure to verify all air is removed from the system. Failure to properly bleed the brake system could adversely affect braking, which could result in death or serious injury. (00585c)

⚠ WARNING

Rider and passenger safety depend upon the correct installation of this kit. Use the appropriate service manual procedures. If the procedure is not within your capabilities or you do not have the correct tools, have a Harley-Davidson dealer perform the installation. Improper installation of this kit could result in death or serious injury. (00333b)

NOTE

This instruction sheet references service manual information. A service manual for your model motorcycle is required for this installation. One is available from a Harley-Davidson dealer.

⚠ WARNING

Brakes are a critical safety component. Contact a Harley-Davidson dealer for brake repair or replacement. Improperly serviced brakes can adversely affect brake performance, which could result in death or serious injury. (00054a)

Fresh, uncontaminated DOT 4 brake fluid from a sealed container is required. GM-40M grease (2 gram bag, part number 42820-04) is also needed. These items are available from a Harley-Davidson Dealer.

If the original brake and clutch levers are reused, new retaining rings (Harley-Davidson Part Number 11143) must be installed.

Kit Contents

See Figure 1 and Table 1.

INSTALLATION

Prepare Motorcycle for Service

⚠ WARNING

To prevent accidental vehicle start-up, which could cause death or serious injury, remove main fuse before proceeding. (00251b)

1. Remove main fuse.

Remove and Install Clutch Fluid Reservoir

1. See the service manual for the following procedures:
 - a. Remove the stock clutch master cylinder/reservoir.
 - b. Install clutch master cylinder/reservoir.
 - c. Fill reservoir with DOT 4 brake fluid.
 - d. Bleed the clutch master cylinder, clutch fluid line and secondary actuator.

Remove and Install Front Brake Fluid Reservoir

1. See the service manual for the following procedures:
 - a. Remove the stock brake fluid reservoir.
 - b. Install brake fluid reservoir.
 - c. Fill reservoir with DOT 4 brake fluid.
 - d. Bleed the front brake system.

Return the Motorcycle to Service

1. Install main fuse.
2. Apply brakes to check proper lamp operation.

⚠ WARNING

Be sure that no lubricants or fluids get on tires, wheels or brakes when changing fluid. Traction can be adversely affected, which could result in loss of control of the motorcycle and death or serious injury. (00047d)

⚠ WARNING

After repairing the brake system, test brakes at low speed. If brakes are not operating properly, testing at high speeds can cause loss of control, which could result in death or serious injury. (00289a)



3. Test ride motorcycle at low speed.
 - a. Repeat the bleeding procedure if brakes feel spongy.
 - b. If the clutch drags or if the transmission shifts hard, repeat the clutch bleeding procedure.

SERVICE PARTS

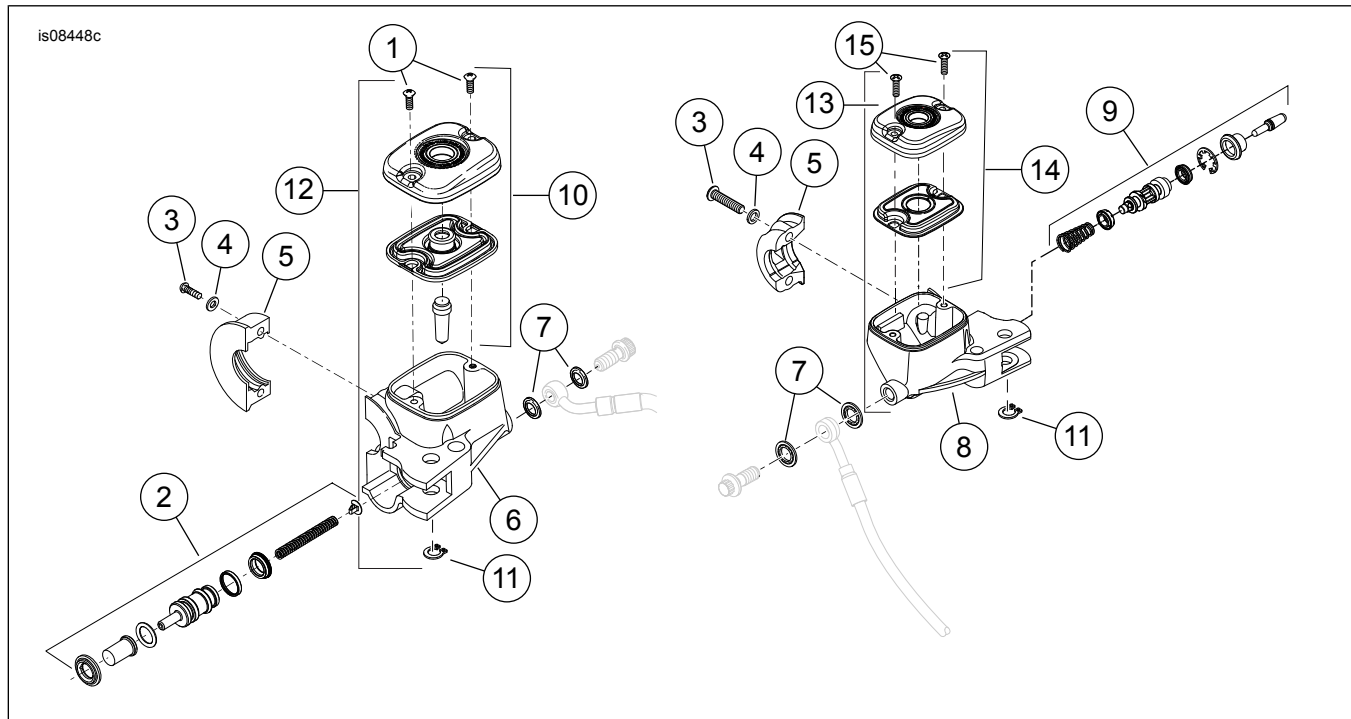


Figure 1. Service Parts: Chrome Clutch and Brake Master Cylinder/Reservoir Kit

Table 1. Service Parts: Chrome Master Cylinder/Reservoir Kit

Item	Description (Quantity)	Part Number
1	Screw, (2)	2573
2	Rebuild kit, front master cylinder	45072-96D
3	Screw (4)	4293
4	Washer (4)	6099
5	Clamp, brake reservoir, chrome (2)	45282-99A
6	Body, brake reservoir	Not Sold Separately
7	Gasket, steel/rubber, brake line (4)	41731-01
8	Body, clutch reservoir	Not Sold Separately
9	Rebuild kit, clutch master cylinder	36700132
10	Cover assembly, master cylinder (1)	46602-05B
11	Ring, retaining	11143
12	Brake master cylinder complete, chrome	Not Sold Separately
13	Clutch master cylinder complete, chrome	Not Sold Separately
14	Cover assembly, master cylinder, clutch	37000278
15	Screw kit	42858-06A