



INSTRUCTIONS

J05686

2013-07-31



TOURING OIL COOLER KIT AND CHROME OIL COOLER COVER

GENERAL

Kit Number

26155-09A

Models

For model fitment information, see the P&A Retail Catalog or the Parts and Accessories section of www.harley-davidson.com (English only).

- This kit **does not** fit with Definitive5™ Filtration System Kits (63800-07, 63801-07 or 63802-07).
- This kit **does not** fit motorcycles equipped with a sidecar.

Additional Parts Required

⚠ WARNING

Rider and passenger safety depend upon the correct installation of this kit. If the procedure is not within your capabilities or you do not have the correct tools, have a Harley-Davidson dealer perform the installation. Improper installation of this kit could result in death or serious injury. (00308b)

Kit Contents

See Figure 5 and Table 1.

INSTALLATION

1. See Figure 1. Remove the oil filter (2) and oil filter adapter (1) from oil filter mount location. Clean the oil filter mounting area thoroughly. Discard oil filter adapter.

NOTE

See Figure 2. The oil adapter assembly has two positioning bosses (1) protruding out of the back. The bosses must be installed toward the oil filter mounting location.

2. See Figure 3. Install the oil filter adapter assembly (1) and oil filter adapter (2). The oil adapter assembly flanges should be aligned so they are installed into the oil adapter gasket cutout as shown.

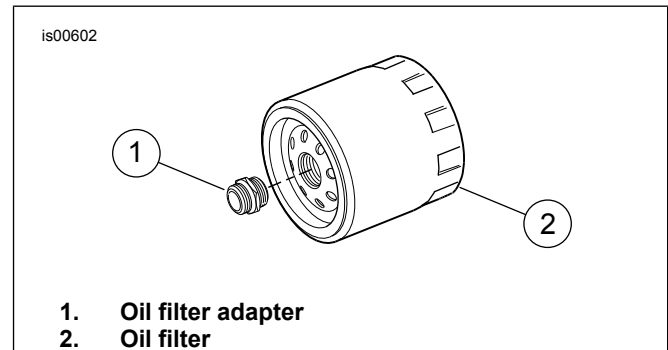


Figure 1. Oil Filter and Adapter

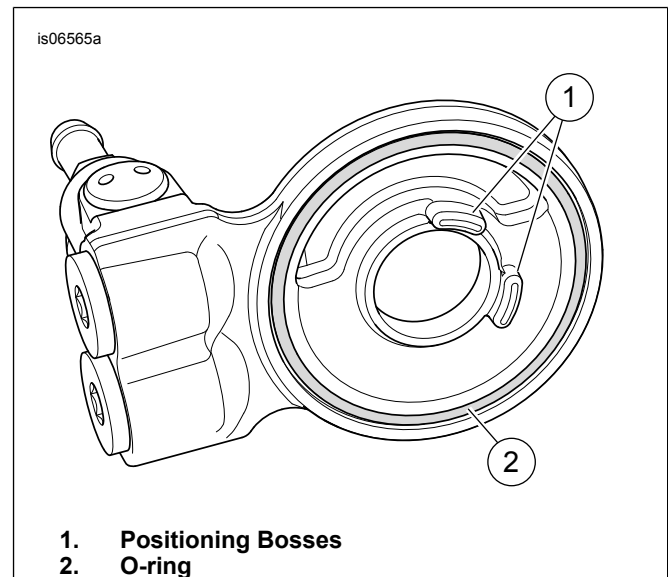


Figure 2. Oil Cooler Adapter

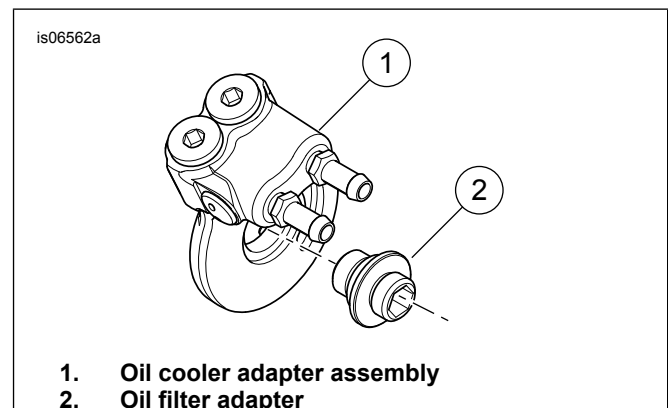


Figure 3. Install Oil Cooler Adapter Assembly

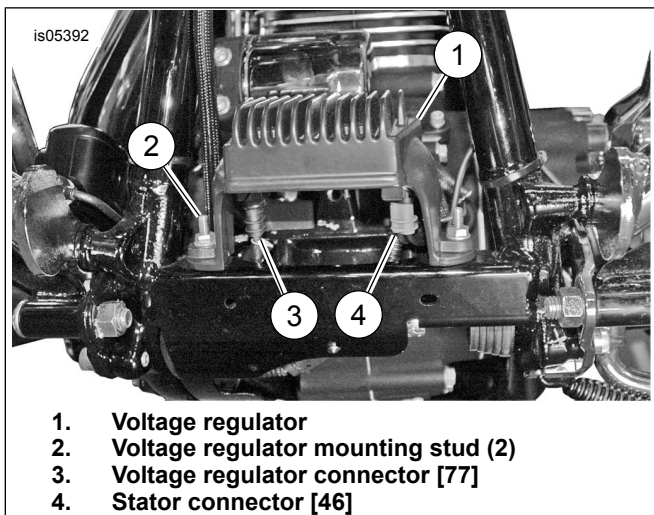


Figure 4. Voltage Regulator and Connectors

3. Tighten oil filter adapter to 16.3–21.7 N·m (12–16 ft-lbs).
4. See Figure 4. Release locking latches from connectors and disconnect the stator connector (4) and voltage regulator connector (3) from the voltage regulator (1).
5. Remove voltage regulator mounting nuts.
6. Lift voltage regulator (1) to remove it from mounting studs (2).
7. See Figure 5. Install the oil cooler cover (11) over the oil cooler (2) studs, then install the mounting bracket (8) over the studs. Secure the bracket and cover to the oil cooler with the three washers (3) and three locknuts (4). Tighten the nuts to 10.8–13.5 N·m (96–120 in-lbs).
8. Install the oil cooler mounting bracket onto the regulator mounting studs. Place the wire mounting bracket on top of the oil cooler mounting bracket, then install the voltage regulator on the studs over the oil cooler bracket. Secure the regulator using two flange nuts (Item 5, Figure 5), but do not tighten at this time.
9. See Figure 4. Connect stator connector (4) and voltage regulator connector (3) to the voltage regulator (1). Secure connectors with latches.
10. Tighten regulator nuts to 84-120 in-lbs (9.5-13.6 Nm).
11. See Figure 5. Slide two clamps onto the left hose (10) and the right hose (9) and connect the hoses onto the oil cooler (2) and oil cooler adapter (1).
12. Fasten hoses to oil filter adapter and oil cooler with worm drive clamps (6). Tighten clamps to 0.9 N·m (8 in-lbs).

NOTE

Using an oil filter wrench (HD-44067A) will prevent damage to the crankshaft position sensor. Position the clamps to avoid interference with oil filter installation. Verify the hose routing is clear of the oil filter and any sharp edges. The hoses must be free of bends or kinks that could obstruct oil flow.

13. Verify that all cables and harnesses are clear of the oil cooler adapter, in order to prevent wear.
14. Lubricate oil filter seal with new engine oil. Thread filter on until seal touches mounting surface, then turn an additional 1/2 to 3/4 turn.
15. Add oil to FILL level on dipstick.
16. Start the motorcycle and check for oil leaks on and around installed parts. Add oil as needed.

System Flow Test

NOTICE

Oil level cannot be accurately measured on a cold engine. For pre-ride inspection, with motorcycle leaning on jiffy stand on level ground, oil should register on dipstick between arrows when engine is cold. Do not add oil to bring the level to the FULL mark on a COLD engine. (00185a)

NOTICE

Do not operate the engine when the oil level is below the add mark on the dipstick at operating temperature. Engine damage will result. (00187b)

1. Start engine. Examine all hose connections for leaks. If there is no leakage, allow engine to warm up.

NOTE

Position the clamps to avoid interference with oil filter installation. Check that hose routing is clear of the oil filter and sharp edges. The hoses must be free of bends or kinks that could obstruct oil flow.

2. Verify that temperature of oil cooler increases when engine reaches normal operating temperatures. If the oil cooler remains cool after engine has warmed up, there may be an oil obstruction. Turn off engine, allow engine to cool and check system for source of obstruction.
3. Verify that all hose clamps are tightened to 0.9 N·m (8 in-lbs).
4. Fill oil to FILL level on dipstick.

SERVICE PARTS

is07478

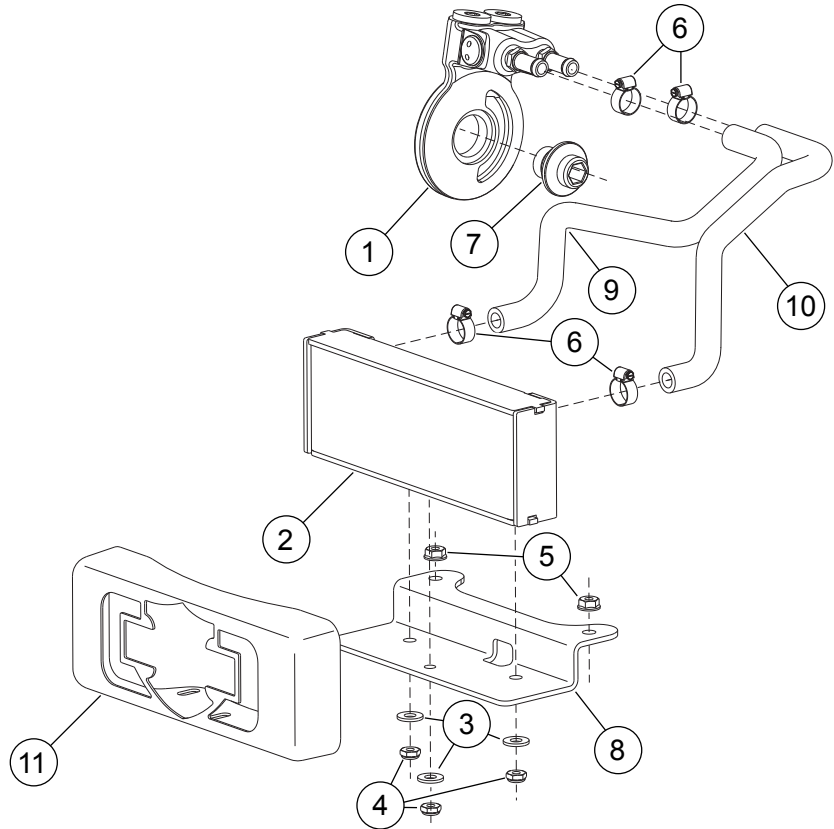


Figure 5. Service Parts for Touring Oil Cooler Kit with Chrome Oil Cooler Cover

Table 1. Service Parts Table

Item	Description (Quantity)	Part Number
1	Adapter assembly, oil cooler	63059-09A
2	Oil cooler core	63068-09
3	Washer (3)	6703
4	Locknut, nylon insert (3)	7671
5	Flange nut (2)	7716
6	Clamp, worm drive (4)	9823
7	Adapter, oil filter	26041-05A
8	Mounting bracket, oil cooler	62108-09
9	Hose, preformed, right	62629-09
10	Hose, preformed, left	62641-09
11	Cover, oil cooler	63056-07A