



# INSTRUCTIONS

J06389

2016-09-01



## HAND LEVER KIT

### GENERAL

#### Kit Numbers

41700423

#### Models

For model fitment information, see the P&A Retail Catalog or the Parts and Accessories section of [www.harley-davidson.com](http://www.harley-davidson.com) (English only).

#### ⚠ WARNING

Rider and passenger safety depend upon the correct installation of this kit. Use the appropriate service manual procedures. If the procedure is not within your capabilities or you do not have the correct tools, have a Harley-Davidson dealer perform the installation. Improper installation of this kit could result in death or serious injury. (00333b)

#### NOTE

*This instruction sheet references service manual information. A service manual for this year/model motorcycle is required for this installation. One is available from a Harley-Davidson dealer.*

#### Kit Contents

See Figure 1 and Table 1.

### BRAKE LEVER INSTALLATION

1. See the Figure 1 and the FRONT BRAKE MASTER CYLINDER section of the service manual. Remove the retaining ring (4) from the groove in the pivot pin and discard retaining ring.
2. Remove the pivot pin and discard along with the original equipment brake lever and pivot lever bushing.

#### NOTE

*New levers come with the pivot lever bushing installed.*

*Follow the instructions in Steps 3 and 4 carefully in order to prevent the actuating tab on the brake lever from*

*damaging the rubber boot and plunger of the front stoplight switch.*

3. Gently press and hold the piston cap (A) forward with a screwdriver. Slip the brake lever into position and align the pivot pin holes.
4. Install the pivot pin and new retaining ring (4) from kit.
5. Check the front brake for proper operation. There should be no free play in the hand lever. A slight preload is permissible.

#### ⚠ WARNING

**A plugged or covered relief port can cause brake drag or lock-up, which could lead to loss of control, resulting in death or serious injury. (00288a)**

6. To verify proper operation of the master-cylinder relief port, actuate the brake lever with the reservoir cover and gasket removed. A slight spurt of fluid will break the surface if internal components are working properly.
7. Install the master cylinder cover.

#### ⚠ WARNING

**Be sure that all lights and switches operate properly before operating motorcycle. Low visibility of rider can result in death or serious injury. (00316a)**

8. Check that the stop light goes on when the brake lever is actuated.

### CLUTCH LEVER INSTALLATION

See the CLUTCH CONTROL section of the appropriate Service Manual for all clutch lever removal, installation and adjustment procedures.



# SERVICE PARTS

301222

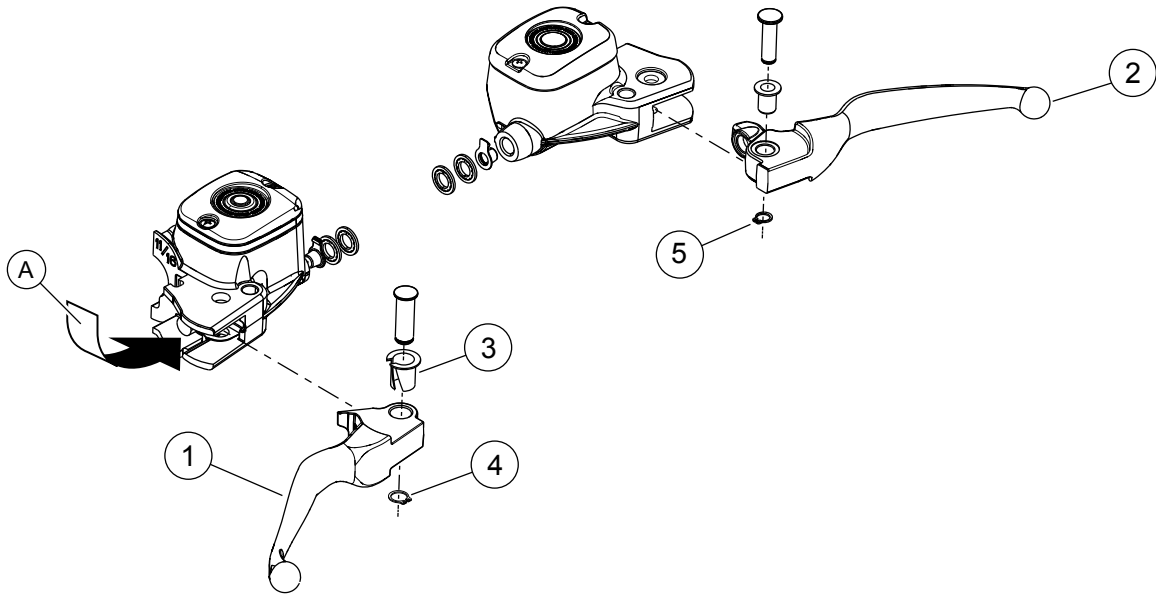


Figure 1. Service Parts: Hand Lever Kit

Table 1. Service Parts Table

Kit	Item	Description (Quantity)	Part Number
Kit 41700423	1	Brake lever, chrome	Not sold separately
	2	Clutch lever, chrome	Not sold separately
	3	Bushing, pressed into brake lever	45423-96
	4	Retaining ring	11143
	5	Retaining ring	11615
<b>Items mentioned in text, but not included in kit:</b>			
	A	Press piston cap forward	