



INSTRUCTIONS

J07054

2021-11-08



STOP/TURN/RUN LED LAMPS

GENERAL

Kit Numbers

67800639, 67800640

Models

For model fitment information, see the P&A retail catalog or the Parts and Accessories section of www.harley-davidson.com (English only).

Installation Requirements

A SNAP-ON PICK (PART NUMBER: TT600-3) or equivalent, mini needle nose pliers and an adjustable pliers aid in the installation of this kit.

⚠ WARNING

Rider and passenger safety depend upon the correct installation of this kit. Use the appropriate service manual procedures. If the procedure is not within your capabilities or you do not have the correct tools, have a Harley-Davidson dealer perform the installation. Improper installation of this kit could result in death or serious injury. (00333b)

NOTE

This instruction sheet refers to service manual information. A service manual for this year/model motorcycle is required for this installation. One is available from a Harley-Davidson dealer.

Electrical Overload

NOTICE

It is possible to overload the vehicle's charging system by adding too many electrical accessories. If the combined electrical accessories operating at any one time consume more electrical current than the vehicle's charging system can produce, the electrical consumption can discharge the battery and cause damage to the vehicle's electrical system. (00211d)

⚠ WARNING

When installing any electrical accessory, be certain not to exceed the maximum amperage rating of the fuse or circuit breaker protecting the affected circuit being modified. Exceeding the maximum amperage can lead to electrical failures, which could result in death or serious injury. (00310a)

Kit Contents

See Figure 5 and Table 1.

Installation

⚠ WARNING

To prevent accidental vehicle start-up, which could cause death or serious injury, remove main fuse before proceeding. (00251b)

1. Remove main fuse. See service manual.
2. See Figure 1. Insert coin (1) or blade of screwdriver into notch (2) at bottom of lens cap (3).
3. Carefully twist until lens cap pops out of lamp housing.
4. While pushing bulb in, rotate counterclockwise to remove.

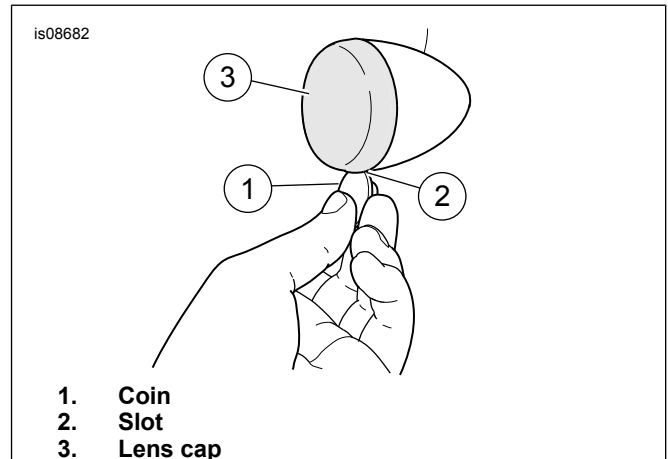


Figure 1. Remove Lens

5. See Figure 2. Pull reflector (1) from lamp housing (2). Insert a right angle pick or a small hex key from inside bulb socket through hole (4). Remove all terminals from lamp base (5).

NOTE

To ease splicing, cut wires to leave as much wire length as possible.

Some models have only two wires to lamp housing.

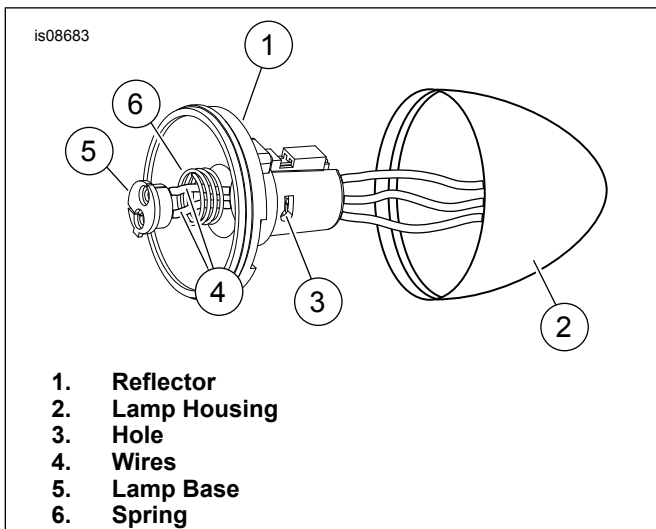


Figure 2. Socket, Lamp Housing, Wires, Lamp Terminal Base and Spring

6. Cut wires as close to terminal end as possible.
7. See Figure 5. Match harness wire (2) with same wire color in lamp housing. Cut shrink insulator (A) off matching wire color.
8. See Figure 3. Slide color matched wires (4) all way into connector (5) as shown.
9. Using pliers, crimp button from up position (6) to down position (7).

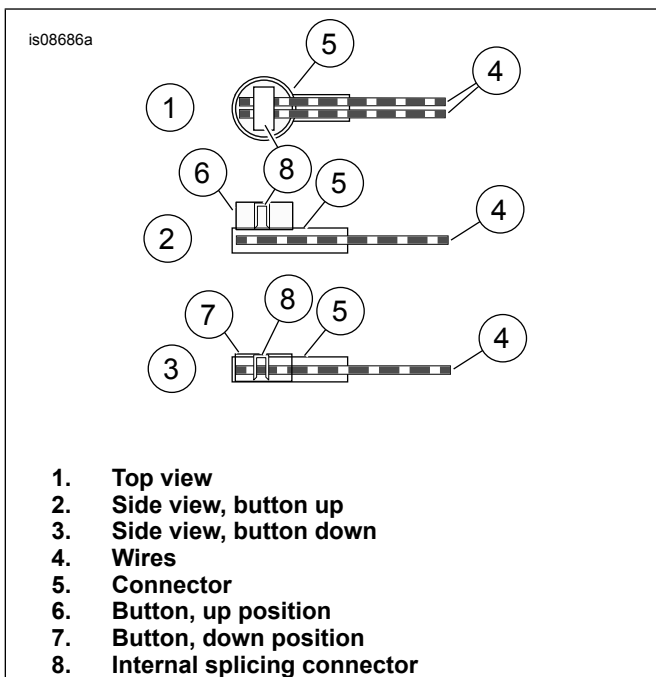


Figure 3. Splice Connector and wires

10. Repeat previous procedures and splice all wires.

11. Verify that all buttons are in the down position. Failure for full engagement of internal splicing connectors (8) can result in a faulty splice. This can cause lights to malfunction or not operate.

12. See Figure 5. Connect lamps (1) to harnesses (2).

NOTE

Verify that ignition switch is in OFF position **before** installing main fuse.

13. Install main fuse. See service manual.

14. Turn ignition switch to IGNITION, but do not start motorcycle. Check operation of all lamps.

15. See Figure 4. Align notch on gasket (4) with notch on LED lamp (5).

16. Align tabs (2) with socket slot (3). Slide LED lamp (1) into housing keeping LED lamp even and square to housing. The LED lamp is held in place with friction from the rubber gasket (6).

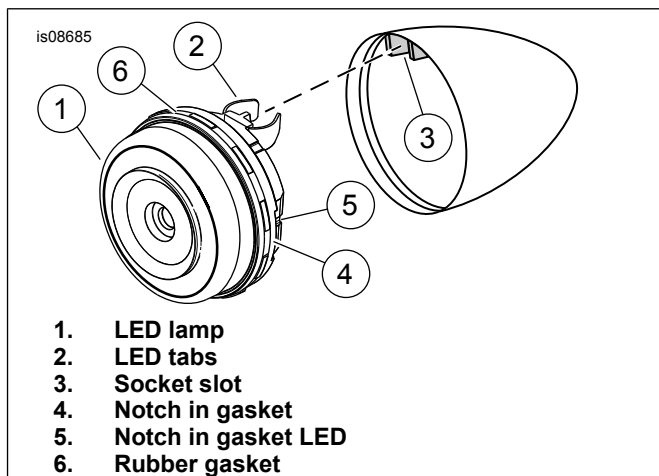


Figure 4. LED Tab and Lamp Housing

17. Snap lens cap into lamp housing with notch on bottom. Repeat for all lens caps.

18. Follow procedure for clearing BCM codes. See service manual.

19. Program BCM. **2014 and Later Touring and Sportster, 2012 Later Dyna, 2011 and Later Softail:** BCM can self-learn if LED turn signals are installed when Hazards are active after LED installation. BCM ignores first two cycles of Hazards. It then learns during next ten Hazards. After 12 cycles of Hazards, settings are updated in the BCM.

20. Verify that there are no BCM codes. If codes display, see service manual.

21. Follow procedure for clearing BCM codes. See service manual.

⚠ WARNING

Be sure that all lights and switches operate properly before operating motorcycle. Low visibility of rider can result in death or serious injury. (00316a)

22. Verify that all lights are working properly before putting the motorcycle in service.

SERVICE PARTS

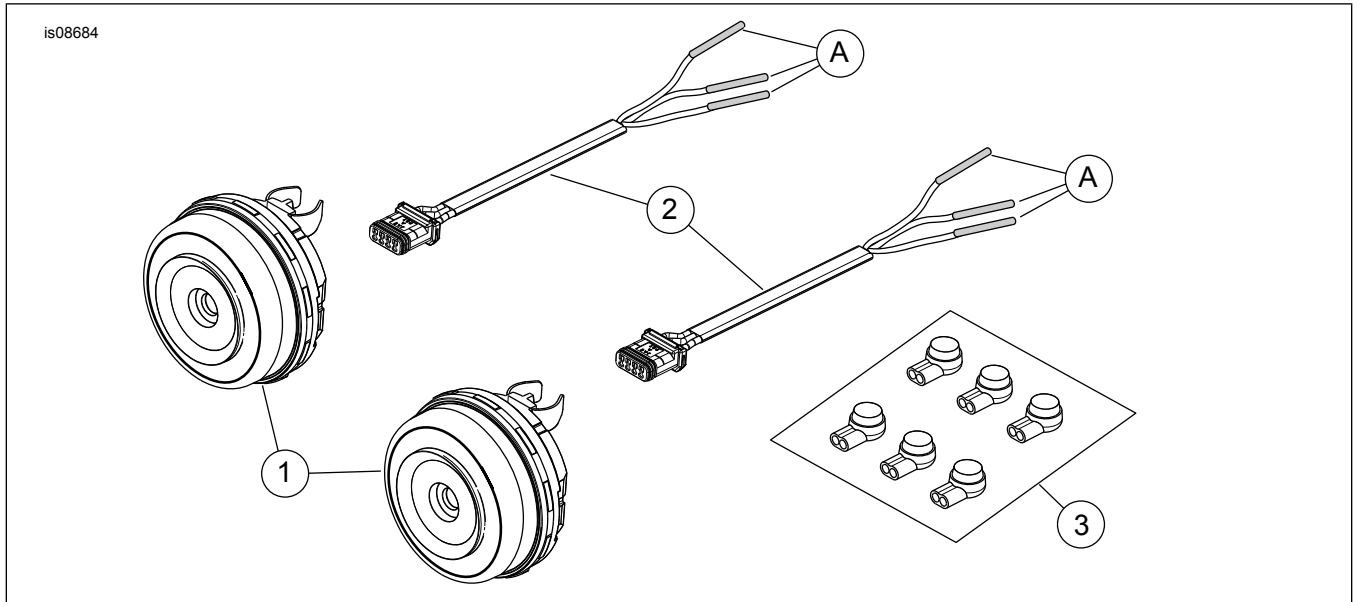


Figure 5. Service Parts: Run/Stop/Turn Lamp

Table 1. Service Parts Table

| Kit | Item | Description (Quantity) | Part Number |
|--|------|----------------------------------|-------------|
| Kit 67800639 Amber LED | 1 | Stop/Run/Turn LED lamp (2) | 67800257 |
| | 2 | Harness, LED (2) | 69201498 |
| | 3 | Connector, Butt-Splice, Seal (6) | 69201499 |
| Kit 67800640 Red LED | 1 | Stop/Run/Turn LED lamp (2) | 67800308 |
| | 2 | Harness, LED (2) | 69201498 |
| | 3 | Connector, Butt-Splice, Seal (6) | 69201499 |
| Items mentioned in text, but not included in kit: | | | |
| | A | Shrink insulation | |