



INSTRUCTIONS

J07069

2016-03-29



BOOM! AUDIO CRUISER AMP AND SPEAKER EXPANSION KIT

GENERAL

Kit Numbers

76000666, 76000700

Models

For model fitment information, see the P&A retail catalog or the Parts and Accessories section of www.harley-davidson.com (English only).

Installation Requirements

Separate purchase of more parts or accessories may be required for proper installation of this seat to your model motorcycle. Refer to the latest P&A Retail Catalog for a list of required parts or accessories for your model.

Separate purchase and installation of a Harley-Davidson® upright.

Previous or simultaneous installation of BOOM! Audio Cruiser Amp and Speaker Kit speakers and hand control to the vehicle.

2011 and later Softail, 2012 Dyna, 2014 and later XL requires separate purchase of a jumper harness, Part No. 72673-11.

Models with in use detachable upright requires separate purchase of extra components.

Loctite® 243 Medium Strength Threadlocker and Sealant - Blue (Part No. 99642-97) is required for proper installation of this kit.

⚠ WARNING

Rider and passenger safety depend upon the correct installation of this kit. Use the appropriate service manual procedures. If the procedure is not within your capabilities or you do not have the correct tools, have a Harley-Davidson dealer perform the installation. Improper installation of this kit could result in death or serious injury. (00333b)

NOTE

This instruction sheet refers to service manual information. A service manual for this year/model motorcycle is required for this installation. One is available from a Harley-Davidson dealer.

ELECTRICAL OVERLOAD

NOTICE

It is possible to overload the vehicle's charging system by adding too many electrical accessories. If the combined electrical accessories operating at any one time consume more electrical current than the vehicle's charging system can produce, the electrical consumption can discharge the battery and cause damage to the vehicle's electrical system. (00211d)

⚠ WARNING

When installing any electrical accessory, be certain not to exceed the maximum amperage rating of the fuse or circuit breaker protecting the affected circuit being modified. Exceeding the maximum amperage can lead to electrical failures, which could result in death or serious injury. (00310a)

The amplifier installed **with this kit** requires up to **4 amps** more current from the electrical system.

Kit Contents

See Figure 1 and Table 1.

PREPARATION

For ALL Vehicles With Main Fuse:

⚠ WARNING

To prevent accidental vehicle start-up, which could cause death or serious injury, remove main fuse before proceeding. (00251b)

1. See the service manual. Remove fuse.

For ALL Vehicles With Main Circuit Breaker:

⚠ WARNING

To prevent accidental vehicle start-up, which could cause death or serious injury, disconnect negative (-) battery cable before proceeding. (00048a)

1. See the service manual. Disconnect the negative (black) battery cable from the negative battery terminal. Retain all seat mounting hardware.

ALL Vehicles:

1. Turn ignition switch OFF.
2. See the service manual. Remove seat. Retain the seat and all mounting hardware.
3. Install the BOOM! Audio Cruiser Amp and Speaker Kit speakers and hand control to the vehicle handlebar per the instructions in **that** kit.

INSTALLATION

Speaker Installation

NOTE

Test-fit to determine the desired location for the speaker pods on the upright.



- See Figure 1. The speaker pod (1) with **three** electrical connectors mounts on the **right** side of upright. The speaker pod (2) with **one** electrical connector mounts on the **left** side of upright.
- Figure 1. Small round uprights need spacers (7) and clamps (5). Square uprights use clamps (5). There are square cutouts in the clamps. Large round uprights use clamps (5).
- Install clamps to upright.
- Check to make sure that speaker and clamp positioning does not interfere with passenger seating function.

If mounting to a large upright or square upright the spacers (8) can be discarded.

NOTE

Insert the spacers inside the clamps (5) for vehicles with 15.8 mm (5/8 in) diameter upright. Verify the spacers seat in the recesses inside the clamps.

1. Place a few drops of thread sealant on screws. Secure speaker to uprights using clamp (5) and screws (6). Tighten to 3.9–5 N·m (35–45 **in-lbs**). Install speaker clamp (5) securing with washers (4) and screws (3) and spacers (7) if needed. Tighten to 20–27 N·m (180–240 **in-lbs**).
2. Locate wires so they do not interfere with operation of vehicle or loading and securing gear. Secure with cable straps.

Electrical Connection

1. **All models:** Connect DIN connectors. Align arrows. Secure female connector (15) to male connector (16). Align arrows and connect rear system connector (17) to front system. Splice and heat shrink inline fuse holder to Red/Blue wire of this kit.

NOTE

If detaching the upright is **not** desired, splice and heat shrink the wires from this kit to the corresponding wires for the electrical connection kit installed with the front kit. Proceed to step 3.

2. **2006-2011 Dyna, 2000-2010 Softail, 2004-2013 XL models only:** Crimp ring terminal from kit to black wire. Install to negative battery terminal. Crimp ring terminal to the other end of the fuse holder and connect to positive battery terminal. Proceed to step 3.

2011 and later Softail, 2012 and later Dyna, 2014 and later XL models only: Purchase electrical connection kit (part number 72673-11).

- Splice and heat shrink the Black wire from this kit to Black wire from electrical connection kit.
- Splice and heat shrink Red/Blue wire (w/ inline fuse holder) from this kit to Red/Blue of electrical connection kit.
- Do not use red/yellow. Close off with heatshrink.
- Connect socket side 6-way of electrical connection to the 6-way pin side 72673-11 of the front kit.
- Apply weather cap to remaining pin side.
- Proceed to step 3.

2014-2016 Road King models: electrical connection kit (part number 69200722) used with Front kit. **2017 and Later Road King models:** electrical connection kit (part number 69201599) used with Front kit.

All Road King models: Purchase Deutsch socket (part number 72144-94BK), socket terminals (part number 72191-94), sealed pins (part number 72154-94).

Requires purchase of extra parts and use of a Deutsch crimp tool. If installer does not have this tool, visit a Harley-Davidson dealer for installation of connector.

- Apply socket (2) terminals (72191-94) one end of to each wire of this kit (requires Deutsch crimp tool).
 - Insert terminal end of Black wire from this kit into cavity 4 of 4-way Deutsch socket housing 72144-94BK.
 - Insert terminal end of Red/Blue wire and inline fuse holder in to cavity 1 of 4-way Deutsch socket housing 72144-94BK.
 - Insert secondary lock 72154-94 into socket housing.
 - Insert seal pins (72195-94) into unused cavities of 4-way socket housing (2 and 3).
 - Mate 4-way socket side to 4-way pin side of: Accessory Vehicle Connection [4A]: (see service manual for location) for 2009-2013 models. Proceed to step 3.
3. **All models:** Install the 10A fuse into the inline fuse holder.

NOTE

Verify that the ignition switch is in the OFF position **before** installing the main fuse or attaching the battery cable.

4. **Models with main fuse:** See the service manual. Install main fuse. **Models with main circuit breaker:** See the service manual and attach the negative battery cable. Apply a light coat of petroleum jelly or corrosion retardant material to battery terminals.
5. See the service manual. Install seat. After installing seat, pull up on the seat to verify that it is secure
6. Verify rear speakers function correctly with front system.

SERVICE PARTS

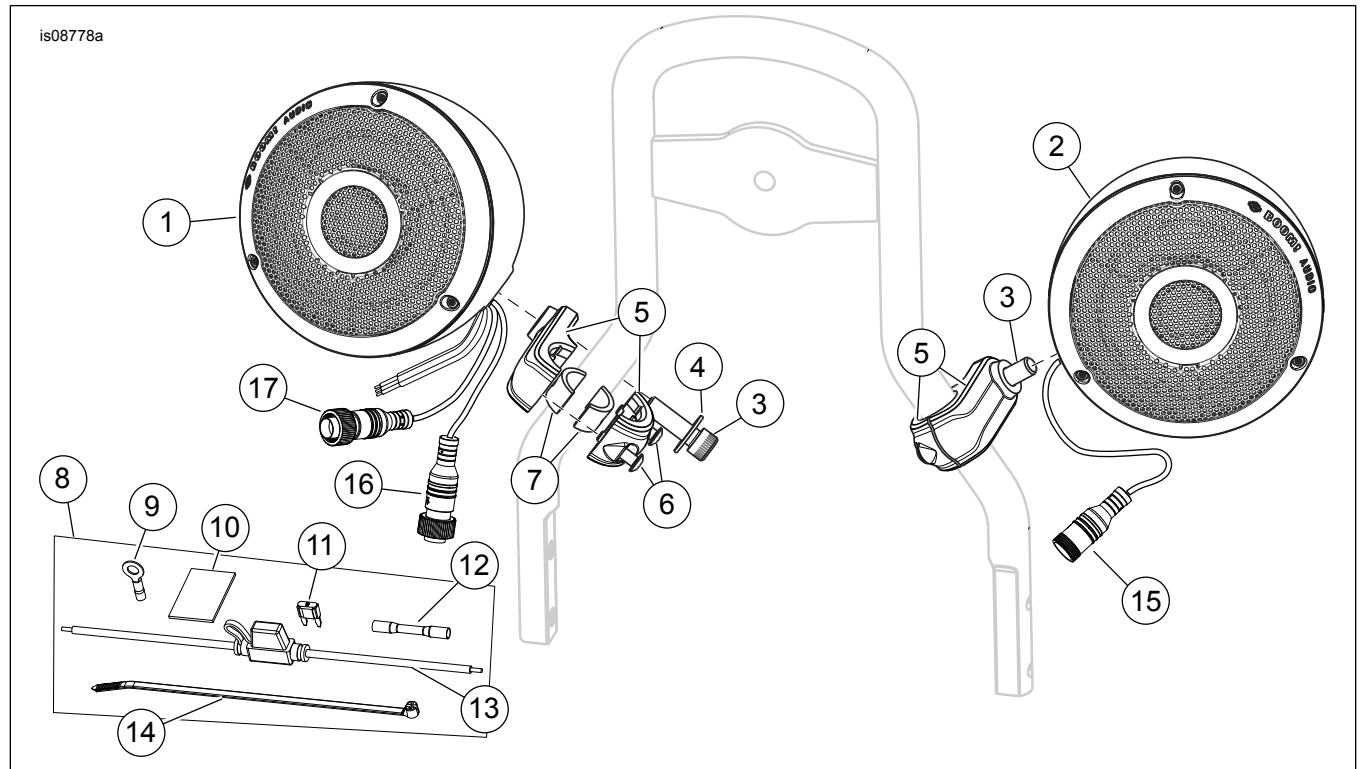


Figure 1. Service Parts, Upright-Mounted Speaker Kits

Table 1. Service Parts

Item	Description (Quantity)	Part Number
1	Speaker assembly, right side, black	76000637
	Speaker assembly, right side, chrome	76000640
2	Speaker assembly, left side, black	76000656
	Speaker assembly, left side, chrome	76000655
3	Screw, socket head, 5/16 x 1 (2)	Not Sold Separately
4	Washer, 5/16 (2), black	Not Sold Separately
	Washer, 5/16 (2), polished	Not Sold Separately
5	Mounting clamp (2), black	10800103
	Mounting clamp (2), chrome	10800104
6	Screw, #10-24 x 3/4 in, black	10200490
	Screw, #10-24 x 3/4 in	10200491
7	Spacer (4)	76000752
8	Wire harness kit (includes items 9, 10, 11, 12, 13, 14)	69201357
9	Ring terminal, 1/4 in	9858
10	Adhesive tape	Not Sold Separately
11	Fuse, 10A, mini	72462-00
12	Butt splice, sealed, #14-16	70586-93
13	Fuse holder, mini type, with cover	70306-02
14	Cable strap	10006
15	Female connector, speaker to speaker	
16	Male connector, speaker to speaker	
17	Rear system to front system connector	