



# INSTRUCTIONS

J05783

2022-07-25



## XL FORWARD CONTROL KIT

### GENERAL

#### Kit Number

50700020, 50700021

#### Models

For model fitment information, see the Parts and Accessories (P&A) Retail Catalog or the Parts and Accessories section of [www.harley-davidson.com](http://www.harley-davidson.com) (English only).

Verify that the most current version of the instruction sheet is used. It is available at: [www.harley-davidson.com/isheets](http://www.harley-davidson.com/isheets)

Contact Harley-Davidson Customer Support Center at 1-800-258-2464 (U.S. only) or 1-414-343-4056.

### Installation Requirements

#### ⚠ WARNING

Rider and passenger safety depend upon the correct installation of this kit. Use the appropriate service manual procedures. If the procedure is not within your capabilities or you do not have the correct tools, have a Harley-Davidson dealer perform the installation. Improper installation of this kit could result in death or serious injury. (00333b)

- LOCTITE 243 MEDIUM STRENGTH THREADLOCKER AND SEALANT (BLUE) (99642-97)

### Kit Contents

See Figure 5, Figure 6 and Table 1.

### INSTALL

#### Remove Stock Shift Lever and Footrest

- See Figure 1. Remove shift lever and footrest bracket.
  - Remove retaining screw (2) from shift lever (1).
  - Remove shift lever (1) from splined shaft.
  - Remove shifter peg from shift lever (1). Mark parts for location and orientation upon removal.
  - Discard shift lever (1).
- Remove socket head screws (4) and footrest bracket (3) from frame. Discard screws (4).
- See Figure 5. Install two hole plugs (1) from kit.
  - Firmly press hole plugs (1) into frame where screws were removed.

- See Figure 2. Disassemble footrest.
  - Remove retaining ring (1) from clevis pin (4).
  - Remove clevis pin (4), footrest (3) and spring washer (2) from footrest bracket (5).
  - Save footrest (3), clevis pin (4) and spring washer (2) for later installation.
  - Discard retaining ring (1) and footrest bracket (5).

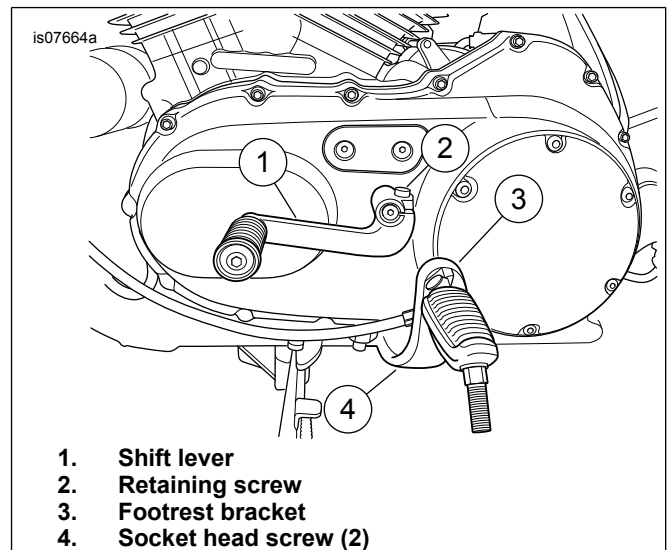


Figure 1. Remove Shift Lever and Footrest

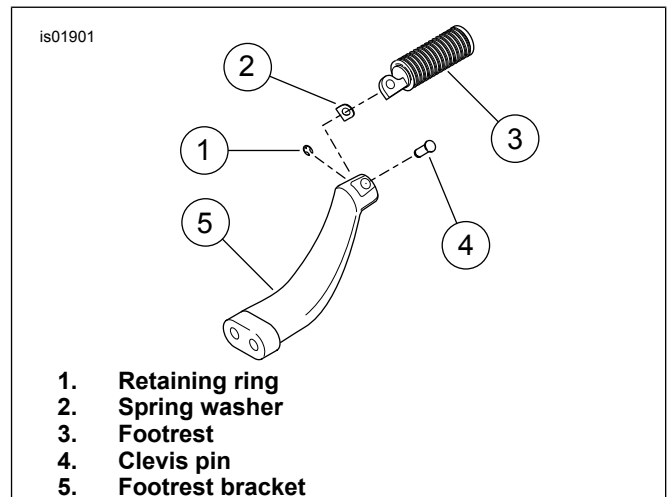


Figure 2. Remove Left Footrest from Support

## Remove Stock Brake Pedal and Footrest

1. See Figure 3. Remove retaining ring (1), clevis pin (2), footrest (3) and spring washer (4).
  - a. Discard retaining ring (1).
  - b. Save footrest (3), clevis pin (2) and spring washer (4) for later installation.
2. Remove brake rod (5) from brake pedal and master cylinder push rod collar. Discard brake rod (5).
3. Remove screws (6).
4. Remove footrest/brake pedal support bracket with attached brake assembly and discard.
5. See Figure 6. Install two hole plugs (1) from kit.
  - a. Firmly press hole plugs (1) into frame where screws (6) were removed.

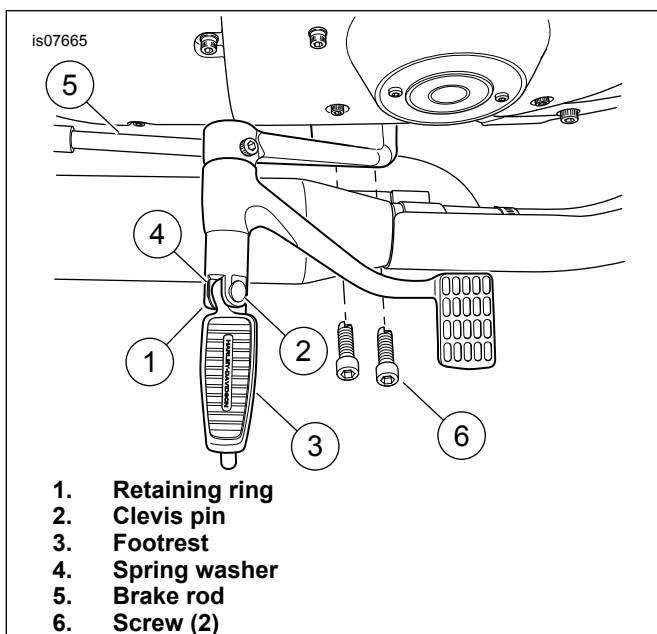


Figure 3. Remove Footrest Support and Brake Pedal

## Install Forward Control Brake Pedal

### NOTE

For an easier installation process, remove exhaust system. See Service Manual.

1. See Figure 6. At lower front of right frame downtube, remove two screws securing J-clip (B) to frame.
  - a. Discard screws but save J-clip for later installation.
2. Assemble footrest components.
  - a. Install brake pedal (6) to footpeg clevis (9).
  - b. Install footpeg clevis (9) to footpeg support bracket (7).

- c. Align hole in footpeg clevis (9) with hole in footpeg support bracket (7).
- d. Install screw (5). Tighten.  
Torque: 17.6–23 N·m (13–17 ft-lbs) *Screw*
3. Install retaining ring (15) to groove end.
4. Install footpeg support bracket.
  - a. Position J-clip (from Step 1) against frame aligning mounting holes.
  - b. Install footpeg support bracket (7).
  - c. Install screws (2). Tighten.  
Torque: 61.1–67.9 N·m (45–50 ft-lbs) *Footpeg support bracket screw*
5. Insert brake rod (13) end into master cylinder pushrod collar (19).
  - a. Secure with brake pedal pushrod pin (18) and E-style clip (17).
6. Apply two drops of threadlocker to ball stud screw.  
Consumable: LOCTITE 243 MEDIUM STRENGTH THREADLOCKER AND SEALANT (BLUE) (99642-97)
7. Align brake rod (13) ball stud with brake pedal assembly (6).
8. Install ball stud screw. Tighten.  
Torque: 13.6–20.4 N·m (120–180 in-lbs) *Brake rod ball stud screw*
9. See Figure 6. Install footpeg with spring washer on footpeg clevis (9).
  - a. Make sure spring washer is positioned inside footpeg clevis (9) with square edge toward inside.
  - b. Align holes. Push clevis pin from top going down through hole in clevis.
  - c. Secure clevis pin using **new** retaining ring (20).

## Install Forward Control Shift Lever

1. See Figure 5. Install shift shaft arm (11) pointing straight down to shift shaft (exiting engine sidecover).
  - a. Install screw (16). Tighten.  
Torque: 22–27 N·m (16–20 ft-lbs) *Shift shaft arm screw*
2. Install footpeg support bracket (8) to frame.
  - a. Install screws (2). Tighten.  
Torque: 61.1–67.9 N·m (45–50 ft-lbs) *Footpeg support bracket screw*

3. Install shift lever (12) to footpeg clevis (10).
  - a. Install footpeg clevis (10) to footpeg support bracket (8).
  - b. Align hole in footpeg clevis (10) with hole footpeg support bracket (8).
  - c. Install screw (5). Tighten.  
Torque: 17.6–23 N·m (13–17 ft-lbs) *screw*
4. Install retaining ring (15) to groove end.
5. Apply two drops of threadlocker to screws (3, 4).  
Consumable: LOCTITE 243 MEDIUM STRENGTH THREADLOCKER AND SEALANT (BLUE) (99642-97)
6. Install shift rod link.
  - a. Install screws (3, 4).
  - b. Tighten.  
Torque: 13.6–20.3 N·m (10–15 ft-lbs) *shift rod*
7. Install shifter peg to **new** shift lever (12). Tighten.
8. See Figure 5. Obtain the saved footpeg, spring washer, footpeg clevis pin and footpeg clevis retaining ring (20) from kit.
9. Install footpeg with spring washer on footpeg clevis (10).
  - a. Make sure spring washer is positioned inside footpeg clevis (10) with square edge toward inside.
  - b. Align holes. Push clevis pin from top going down through hole in clevis.
  - c. Secure clevis pin using **new** retaining ring (20).

1. See Figure 4. Remove screw (1) securing ball joint (2) to shift pedal (5).
2. Turn ball joint or shift rod (4) to adjust rod length.
  - a. Temporarily attach ball joint to shift pedal and check pedal angle.
  - b. Make sure an equal number of threads are visible on both ends of shift rod.
3. When pedal angle is at 45 degrees, install screw (1). Tighten.  
Torque: 13.6–20.3 N·m (10–15 ft-lbs) *shift rod*
4. While holding shift rod (4), tighten locknuts (3) on each end.

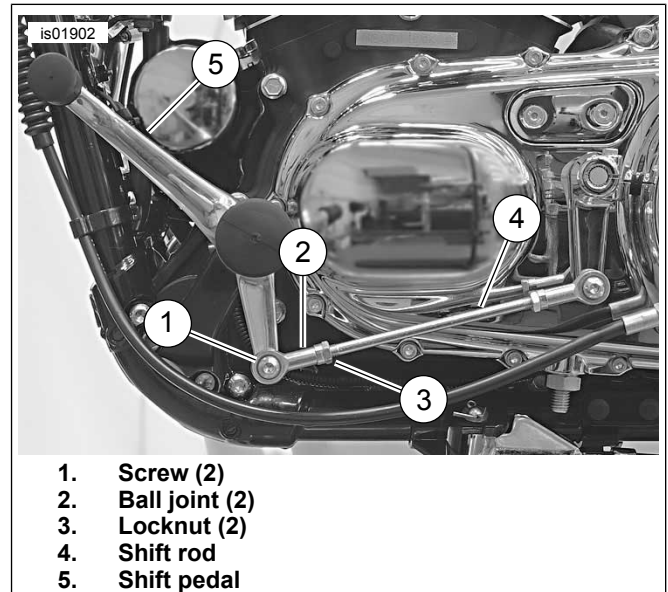


Figure 4. Adjusting Shift Pedal

## Adjusting Shift Pedal

If gears do not fully engage or toe shifter travel is incorrect, adjust shift linkage to 45 degrees.

## SERVICE PARTS

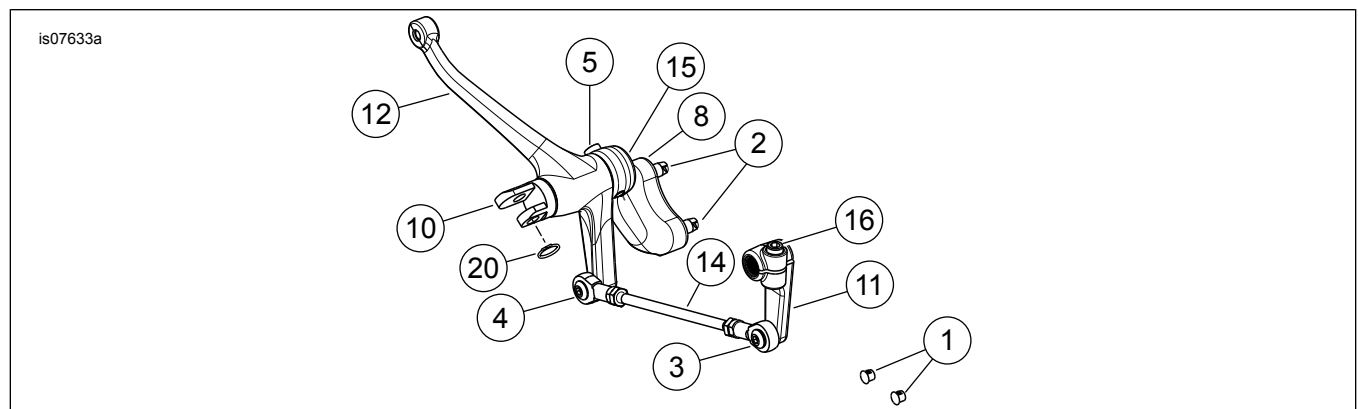
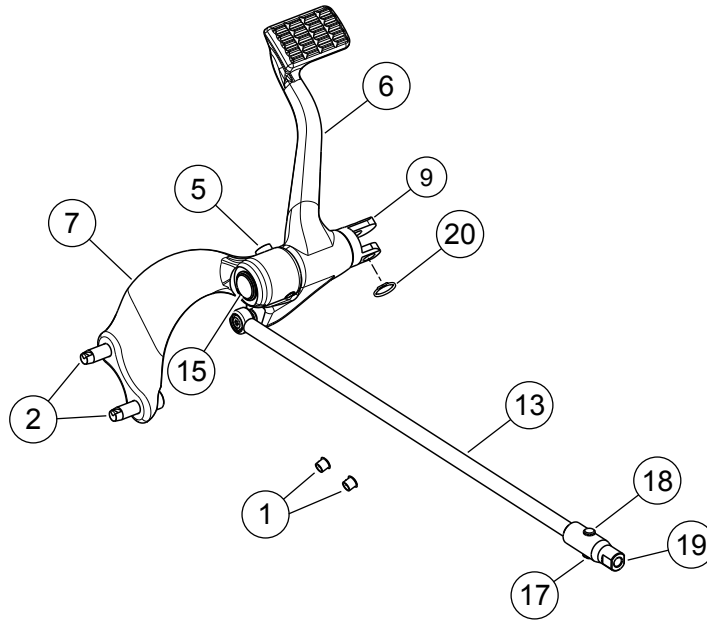


Figure 5. Service Parts: Forward Control Left (Shift) Side



**Figure 6. Service Parts: Forward Control Right (Brake) Side**

**Table 1. Service Parts Table**

Item	Description (Quantity)	Part Number
1	Plug, hole (4)	90493-83
2	Screw, 3/8-16 x 1-1/4 inch (4)	3214
3	Screw, 5/16-18 x 7/8 inch	4359
4	Screw, hex button (lock) 5/16-18 x 1 inch	4016
5	Screw, hex socket 5/16-18 x 1-1/4 inch (2)	3210A
6	Assembly, brake pedal, chrome	50600111
	Assembly, brake pedal, black	50600025
7	Bracket, right rider footpeg support, black	42652-04
8	Bracket, left rider footpeg support, black	42651-04
9	Clevis footpeg, right	51731-10
10	Clevis footpeg, left	51730-10
11	Lever, shift shaft arm, black	34724-10
	Lever, shift shaft arm, chrome	34670-06
12	Assembly, shift lever, chrome	33600043
	Assembly, shift lever, black	34723-10
13	Assembly, brake rod, black	50600092
	Assembly, brake rod, chrome	50600123
14	Assembly, shift rod link, black	34663-10
	Assembly, shift rod link, chrome	33600049
15	Ring, footrest mount clevis retaining (2)	11390
16	Screw	2708A
17	Clip, E-style	12600080
18	Brake pedal pushrod pin	50600101
19	Rear master cylinder pushrod collar, chrome	41700259
20	Retaining ring	11304
<b>Items mentioned in text, but not included in kit:</b>		
A	Stock footrest	
B	Stock J-clip	