



INSTRUCTIONS

J06075

2014-07-28



FOOTPEG OR MINI FOOTBOARD BRACKET KIT

GENERAL

Kit Number

50500403

Models

For model fitment information, see the P&A Retail Catalog or the Parts and Accessories section of www.harley-davidson.com (English only).

Installation Requirements

Separate purchase and installation of other parts or accessories may be required for proper installation of this kit on your model motorcycle. See the P&A Retail Catalog or the Parts and Accessories section of www.harley-davidson.com (English only).

⚠ WARNING

Rider and passenger safety depend upon the correct installation of this kit. Use the appropriate service manual procedures. If the procedure is not within your capabilities or you do not have the correct tools, have a Harley-Davidson dealer perform the installation. Improper installation of this kit could result in death or serious injury. (00333b)

NOTE

This instruction sheet references service manual information. A service manual for your model motorcycle is required for this installation. Service manuals are available from a Harley-Davidson dealer.

Kit Contents

See Figure 1 and Table 1.

REMOVAL

⚠ WARNING

Wear safety glasses or goggles when removing or installing retaining rings. Retaining rings can slip from the pliers and could be propelled with enough force to cause serious eye injury. (00312a)

1. See service manual. Remove the passenger footpeg or mini footboard.
2. Repeat steps for the opposite side.

INSTALLATION

NOTE

2010 and later Touring motorcycles: Three holes are available in the rear fork brackets for footboard bracket mounting. The footboards can be installed in any of three

positions for passenger comfort. A plastic plug in the upper hole can be removed.

2009 and earlier Touring motorcycles: The lowest hole is **not** usable because the hole is not threaded.

1. See Figure 1. Align support (1) with appropriate mounting holes.
 - a. **2010 and Later Models:** Install shoulder screw (3) into the lowest hole in the rear swingarm bracket of the frame.
 - b. **All Other Models:** Align bracket with desired mounting hole. Install shoulder screw (3).
2. Tighten to 5–8 N·m (48–72 in-lbs).
3. At the desired height, install the upper screw (6) and lockwasher (7). Tighten to 49–56 N·m (36–42 ft-lbs).
4. Follow instructions in service manual to install footpeg or mini footboard. Install clevis pin (5) and retaining ring (2).
5. Repeat steps for the opposite side.

SERVICE PARTS

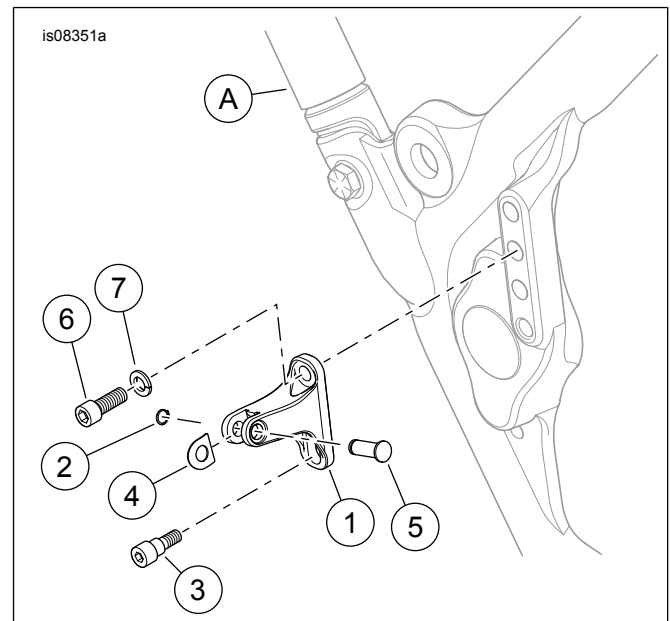


Figure 1. Service Parts: Passenger Bracket Kit



Table 1. Service Parts

Item	Description (Quantity)	Part Number
1	Support, RH (shown)	50500332
	Support, LH (not shown)	50500334
2	Retaining ring (2)	11304
3	Screw, shoulder 2)	4916
4	Spring washer (2)	50912-72
5	Clevis pin (2)	45041-01A
6	Screw, socket head (2)	3143
7	Lockwasher (2)	Not Sold Separately
Items mentioned in text, but not included in kit.		
A	Frame	