



INSTRUCTIONS

J05553

2013-02-27



MIRROR EXTENDER KITS

GENERAL

Kit Numbers

56000039, 56000042

Models

For model fitment information, see the P&A retail catalog or the Parts and Accessories section of www.harley-davidson.com (English only).

Kit Contents

See Figure 1 and Table 1.

INSTALLATION

1. See Figure 1. Remove the left and right side mirrors (A) currently installed on the vehicle. Retain the mirrors and attaching fasteners (B, C) for installation to the extenders.

NOTE

The mirror extenders (1, 2) are side-specific. The extenders install with the mounting boss (F) facing down, forward and outboard.

2. Assemble the correct extender to the hand control with fasteners from the kit.
 - a. Insert a screw (3) from the kit, from the top, through the hole in the end of the extender opposite the mounting boss.
 - b. Install a lockwasher (4) from the kit onto the screw threads.
 - c. Insert the screw through the mirror mounting hole in the hand lever bracket (D or E).
 - d. Install a flat washer (5) from the kit onto the screw threads, followed by another lockwasher (4).
 - e. Install an acorn nut (6) from the kit onto the screw threads, but do not fully tighten now.
3. Assemble the correct mirror (A) to the extender with the fasteners (B, C) removed in Step 1, but do not fully tighten.
4. Repeat Steps 2-3 on the opposite side of the vehicle.
5. Adjust the mirrors and extenders for proper field of vision. Tighten the acorn nuts (C) on the mirror studs to 13.6 N·m (10 ft-lbs). Tighten the acorn nuts (6) and screws (3) to 16.3 N·m (12 ft-lbs). Check mirror and extender adjustment and reposition if necessary.



SERVICE PARTS

is07434

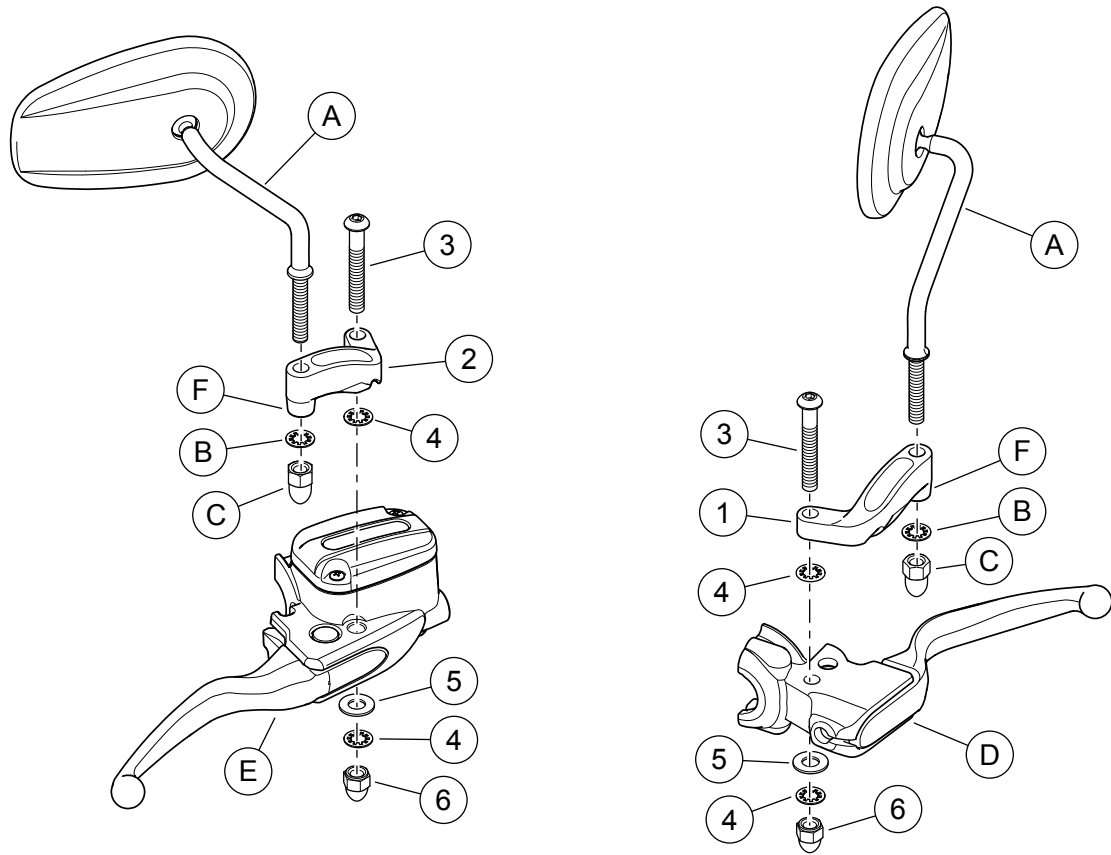


Figure 1. Service Parts, Mirror Extender Kits

Table 1. Service Parts

Kit	Item	Description (Quantity)	Part Number
Kit 56000039 Mirror Extenders (Chrome)	1	Mirror extender, left (Chrome)	56000040
	2	Mirror extender, right (Chrome)	56000041
	3	Screw, hex socket button head, 5/16-24 x 57.2 mm (2.25 in) long (2)	10500032
	4	Lockwasher, internal tooth, 5/16 in. (4)	7127
	5	Flat washer (2)	6771A
	6	Acorn nut, 5/16-24 (2)	7736
Kit 56000042 Mirror Extenders (Black)	1	Mirror extender, left (Black)	56000043
	2	Mirror extender, right (Black)	56000044
	3	Screw, hex socket button head, 5/16-24 x 57.2 mm (2.25 in) long, Black (2)	10500033
	4	Lockwasher, internal tooth, 5/16 in, Black (4)	7155
	5	Flat washer, Black (2)	6929
	6	Acorn nut, 5/16-24, Black (2)	8196
Items mentioned in text, but not included in kit:			
	A	Currently installed mirror (2)	
	B	Internal-toothed lockwasher (2)	
	C	Tall acorn nut (2)	
	D	Clutch lever and bracket assembly	
	E	Front brake lever and master cylinder assembly	
	F	Mounting boss (2)	