



INSTRUCTIONS

J05983

2014-03-27



EXTENDED JIFFY STAND

GENERAL

Kit Number

50000091

Models

For model fitment information, see the P&A Retail Catalog or the Parts and Accessories section of www.harley-davidson.com (English only).

Installation Requirements

Proper installation of this kit requires the use of LUBRIPLATE® 110 lubricant or equivalent. This item is available from a Harley-Davidson dealer.

⚠ WARNING

Rider and passenger safety depend upon the correct installation of this kit. Use the appropriate service manual procedures. If the procedure is not within your capabilities or you do not have the correct tools, have a Harley-Davidson dealer perform the installation. Improper installation of this kit could result in death or serious injury. (00333b)

NOTE

This instruction sheet refers to service manual information. A service manual for this year/model motorcycle is required for this installation. One is available from a Harley-Davidson dealer.

Kit Contents

See Figure 1 and Table 1.

INSTALLATION

This kit is a direct replacement for the OE jiffy stand.

⚠ WARNING

Block or jack vehicle under frame in a way that the vehicle will not fall over. Failure to properly block and/or raise the vehicle could result in death or serious injury. (00462c)

1. Refer to the service manual to remove the OE jiffy stand. Discard bushings and pretzel clip.
2. See Figure 1. Install jiffy leg bumper (4) into the jiffy stand leg.
3. Refer to the service manual and install the extended jiffy stand (1), bushings (2) and pretzel clip (3), **with the following exception:**
 - The clevis pin (A) must be installed from the top of the jiffy stand bracket (B). The pretzel clip must be installed on the bottom side of the jiffy stand bracket.

SERVICE PARTS

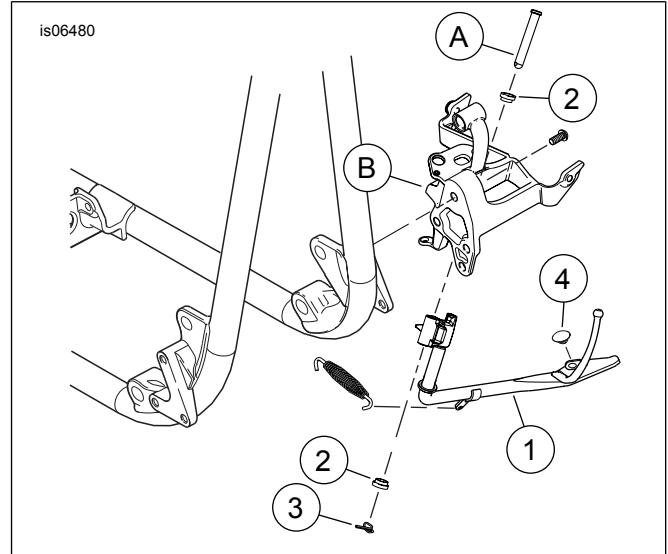


Figure 1. Service Parts: Extended Jiffy Stand

Table 1. Service Parts

Item	Description (Quantity)	Part Number
1	Jiffy stand, extended	50103-07B
2	Bushing (2)	53176-08
3	Clip, pretzel	554A
4	Bumper, jiffy leg	62123-07
Items mentioned in text, but not included in kit:		
A	Clevis pin	
B	Jiffy stand bracket	

