



INSTRUCTIONS

J05720

2013-06-01



CUSTOM HAND LEVER KITS

GENERAL

Kit Numbers

36700067, 36700066, 36700065, 36700064, 36700091

Models

For model fitment information, see the P&A Retail Catalog or the Parts and Accessories section of www.harley-davidson.com (English only).

Tools and Supplies Required

⚠ WARNING

Rider and passenger safety depend upon the correct installation of this kit. Use the appropriate service manual procedures. If the procedure is not within your capabilities or you do not have the correct tools, have a Harley-Davidson dealer perform the installation. Improper installation of this kit could result in death or serious injury. (00333b)

NOTE

This instruction sheet references service manual information. A service manual for your model motorcycle is required for this installation and is available from a Harley-Davidson Dealer.

⚠ WARNING

Brakes are a critical safety component. Contact a Harley-Davidson dealer for brake repair or replacement. Improperly serviced brakes can adversely affect brake performance, which could result in death or serious injury. (00054a)

Kit Contents

See Figure 1 and Table 1.

BRAKE LEVER INSTALLATION

⚠ WARNING

Contact with DOT 4 brake fluid can have serious health effects. Failure to wear proper skin and eye protection could result in death or serious injury.

- **If inhaled:** Keep calm, remove to fresh air, seek medical attention.
- **If on skin:** Remove contaminated clothing. Rinse skin immediately with plenty of water for 15-20 minutes. If irritation develops, seek medical attention.
- **If in eyes:** Wash affected eyes for at least 15 minutes under running water with eye lids held open. If irritation develops, seek medical attention.
- **If swallowed:** Rinse mouth and then drink plenty of water. Do not induce vomiting. Contact Poison Control. Immediate medical attention required.
- See Safety Data Sheet (SDS) for more details available at sds.harley-davidson.com

(00240e)

NOTICE

DOT 4 brake fluid will damage painted and body panel surfaces it comes in contact with. Always use caution and protect surfaces from spills whenever brake work is performed. Failure to comply can result in cosmetic damage. (00239c)

NOTE

Immediately wipe up any brake fluid spillage with a clean, dry, soft cloth. Follow up by thoroughly wiping affected area with a clean, damp, soft cloth (small spills) or washing with a large quantity of soapy water (large spills).

Cover nearby motorcycle surfaces with a polyethylene protective sheeting to help protect against damage to finish caused by spillage or splash of D.O.T. 4 brake fluid.

1. Remove stock brake lever following instructions in the service manual.
2. Install new brake lever following instructions in the service manual.

CLUTCH LEVER INSTALLATION

See the CLUTCH CONTROL section of the Service Manual for clutch lever (8) removal, installation and adjustment procedures.



SERVICE PARTS

is07658

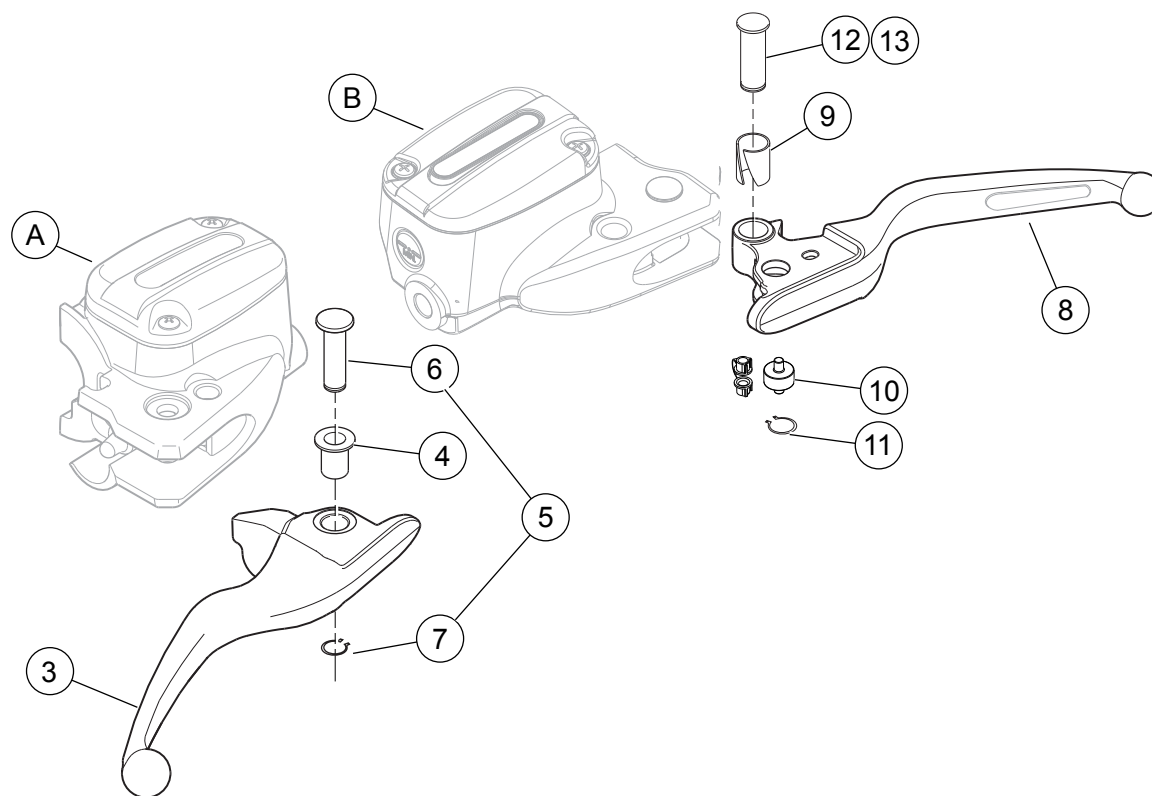


Figure 1. Service Parts: Hand Control Lever (Slotted Shown)

Table 1. Service Parts: Hand Control Lever Kits

Kit	Item	Description (Quantity)	Part Number	
Kit 36700065	1	Brake hand lever, chrome (includes Items 3 through 7)	Not Sold Separately	
Chrome Levers	2	Clutch hand lever, chrome (includes Items 8 through 11, 13)	Not Sold Separately	
Kit 36700064	1	Brake hand lever, black (includes Items 3 through 7)	Not Sold Separately	
Black Levers	2	Clutch hand lever, black (includes Items 8 through 11, 12)	Not Sold Separately	
Kit 36700066	1	Brake hand lever, slotted (includes Items 3 through 7)	Not Sold Separately	
Slotted Levers	2	Clutch hand lever, slotted (includes Items 8 through 11)	Not Sold Separately	
Kit 36700067	1	Brake hand lever, slotted (includes Items 3 through 7)	Not Sold Separately	
Edge Cut Levers	2	Clutch hand lever, slotted (includes Items 8 through 11, 12)	Not Sold Separately	
Kit 36700091	1	Brake hand lever, slotted (includes Items 3 through 7)	Not Sold Separately	
Chrome Levers	2	Clutch hand lever, slotted (includes Items 8 through 11)	Not Sold Separately	
Parts common to ALL Kits	3	Brake hand lever (includes Item 4)	Not sold separately	
	4	• Bushing, brake lever pivot	Not sold separately	
	5	Pivot pin kit (polished). For all Kits EXCEPT 36700064 (includes Items 6 and 7) Pivot pin kit (black). For Kit 36700064 (includes Items 6 and 7)	42105-06A 42860-06B	
	6	• Pivot pin, brake lever	Not sold separately	
	7	• Retaining ring	11615	
	8	Clutch hand lever	Not sold separately	
	9	Bushing	Not Sold Separately	
	10	Bushing and Roller Kit	46246-01	
	11	Retaining ring	11143	
	12	Pivot pin, black	38738-08	
	13	Pivot pin, stainless steel	45032-82	
	Reference items not included in kit:			
		A	Front brake master cylinder	
	B	Clutch master cylinder		