



# INSTRUCTIONS

J05187

2016-08-22



## SCREAMIN' EAGLE XL 883 TO 1200 CONVERSION KIT

### GENERAL

#### Kit Number

29836-10A

#### Models

For model fitment information, see the P&A Retail Catalog or the Parts and Accessories section of [www.harley-davidson.com](http://www.harley-davidson.com) (English only).

#### Additional Parts Required

See the appropriate sections of the service manual for special tools required to install this kit.

This kit requires a performance air cleaner kit. Refer to the Screamin' Eagle catalog or the P&A retail catalog.

Proper installation of this kit requires ECM recalibration. Contact a Harley-Davidson dealer for details.

#### ▲ WARNING

**Rider and passenger safety depend upon the correct installation of this kit. Use the appropriate service manual procedures. If the procedure is not within your capabilities or you do not have the correct tools, have a Harley-Davidson dealer perform the installation. Improper installation of this kit could result in death or serious injury. (00333b)**

#### NOTE

*This instruction sheet references service manual information. A service manual for your model motorcycle is required for this installation and is available from a Harley-Davidson dealer.*

### Kit Contents

See Figure 1 to Figure 3 and Table 1 to Table 3.

#### NOTE

*This kit is intended for racing applications only.*

*Engine related performance parts are intended for the experienced rider only.*

### REMOVAL

#### ▲ WARNING

**When servicing the fuel system, do not smoke or allow open flame or sparks in the vicinity. Gasoline is extremely flammable and highly explosive, which could result in death or serious injury. (00330a)**

1. Remove left side cover and the main fuse. Refer to MAIN FUSE REMOVAL in service manual.
2. Remove air cleaner assembly. Refer to AIR CLEANER REMOVAL in service manual.
3. Remove cylinder heads, cylinders, and pistons. Refer to appropriate ENGINE sections in service manual.
4. Remove clutch components. Refer to DRIVE/TRANSMISSION section in service manual.
5. Remove cam gears. Refer to appropriate ENGINE sections in service manual.

### INSTALLATION

#### Install Engine and Clutch Components

##### NOTE

*The 1200 cc pistons have an arrow on the top of the piston. This arrow must face the front of the engine when piston is installed. There is no front cylinder piston or rear cylinder piston. New pistons can be installed in either cylinder.*

*Check piston rings for proper side clearance and end gap. Be sure end gaps of adjacent rings are installed 90 degrees apart.*

1. Install cam gears from kit. Refer to appropriate ENGINE sections in service manual.
2. Install cylinders, and pistons from kit. Refer to appropriate ENGINE sections in service manual.
3. Install cylinder heads previously removed. Refer to appropriate ENGINE sections in service manual.
4. Install clutch components. Replace original gaskets, O-rings, and seals with new components from kit. Refer to DRIVE/TRANSMISSION section in service manual.
5. Install air cleaner assembly.

#### Recalibrate ECM

##### NOTICE

**You must recalibrate the ECM when installing this kit. Failure to properly recalibrate the ECM can result in severe engine damage. (00399b)**

Proper installation of this kit requires ECM recalibration. Contact a Harley-Davidson dealer for details.

#### Return to Service

1. Install the main fuse and left side cover.



# SERVICE PARTS

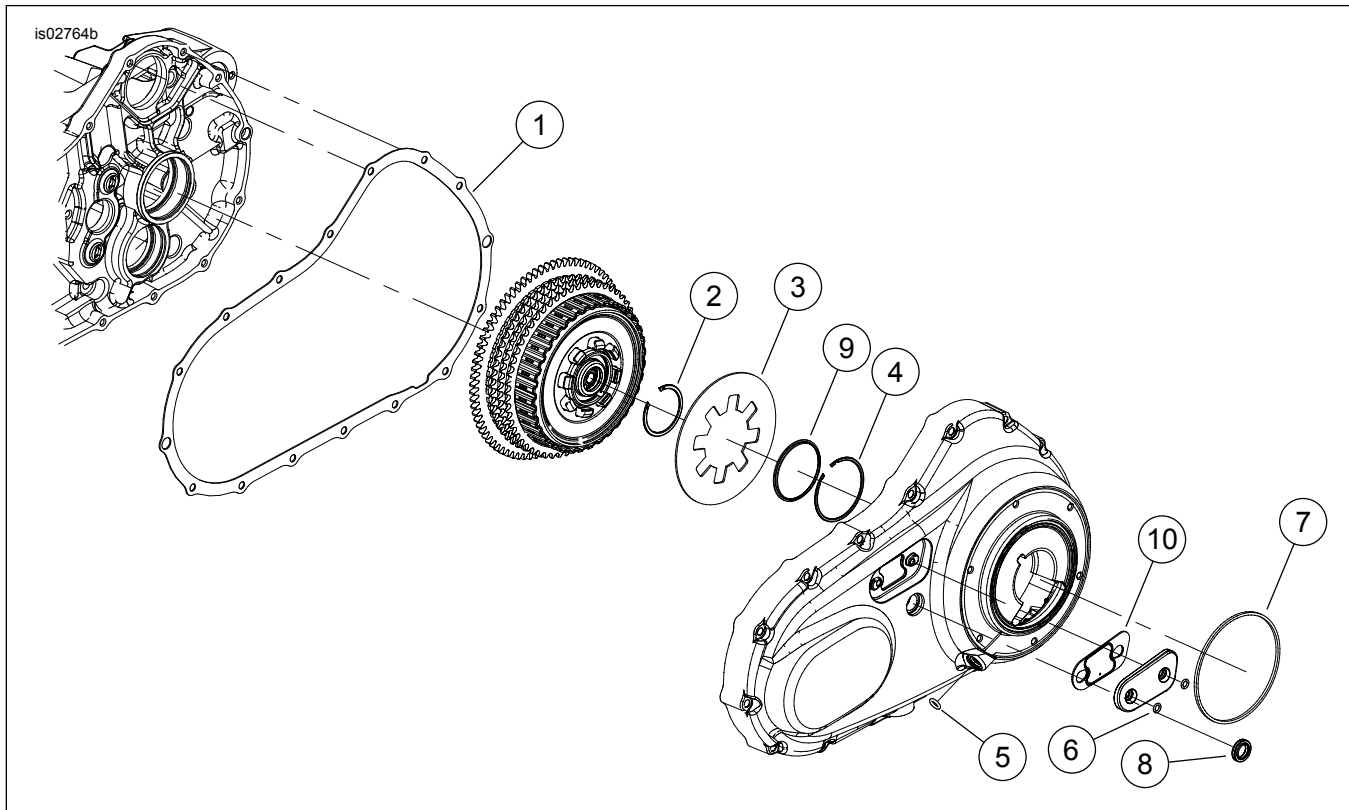


Figure 1. Service Parts: Screamin' Eagle XL 833 to 1200 Conversion Kit

Table 1. Service Parts: Screamin' Eagle XL 833 to 1200 Conversion Kit

Item	Description (Quantity)	Part Number	Item	Description (Quantity)	Part Number
1	Gasket, primary cover	34955-04	6	O-ring (2)	11171
2	Retaining ring, clutch plate	37909-90	7	Gasket, clutch inspection cover	25463-94A
3	Spring, clutch plate	37924-04A	8	Seal, oil	37107-06
4	Retaining ring	37908-90	9	Clutch retaining ring	37872-90
5	O-ring, clutch cable	11179	10	Gasket, chain inspection	34990-08

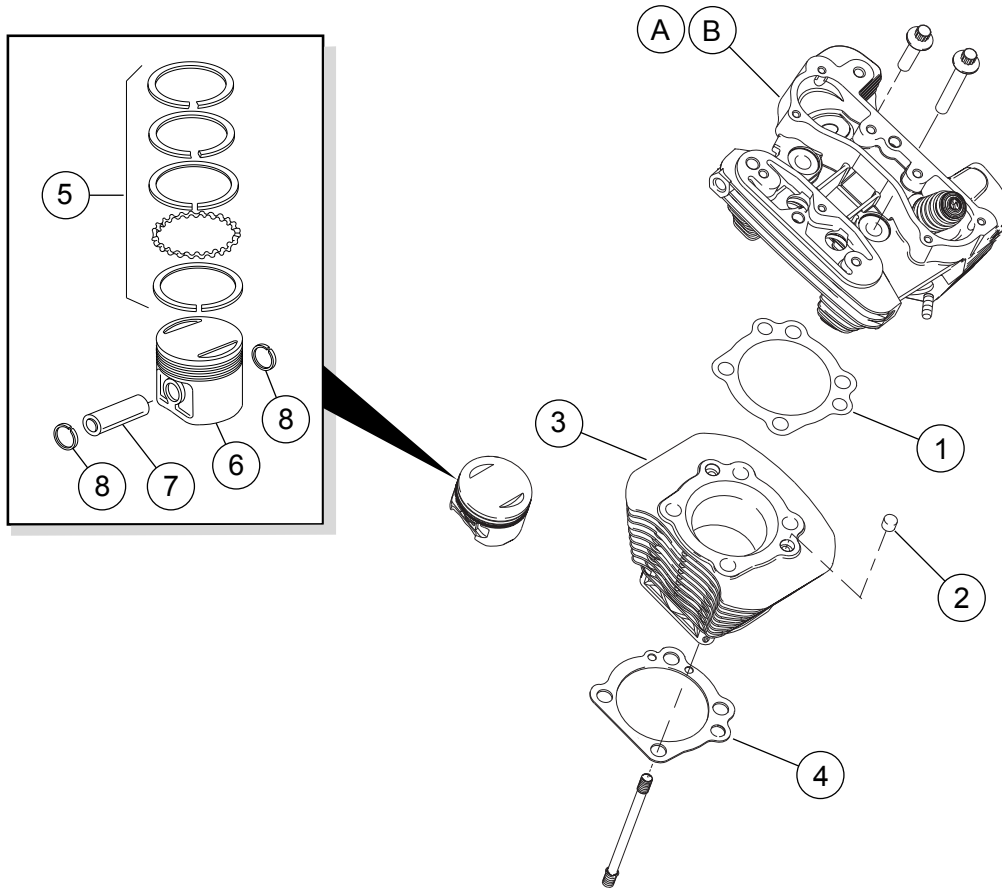
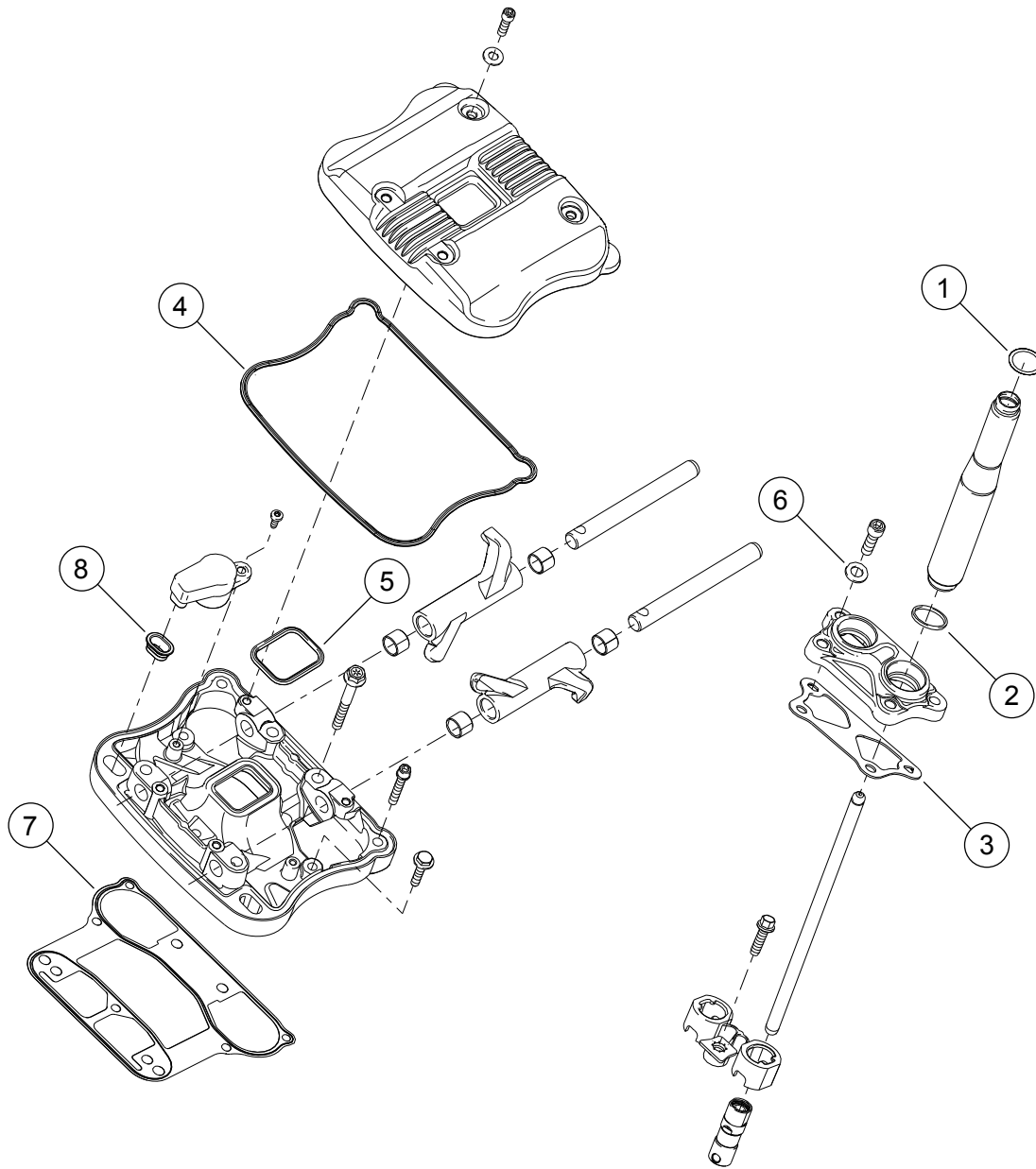


Figure 2. Service Parts: Screamin' Eagle XL 833 to 1200 Conversion Kit

Table 2. Service Parts: Screamin' Eagle XL 833 to 1200 Conversion Kit

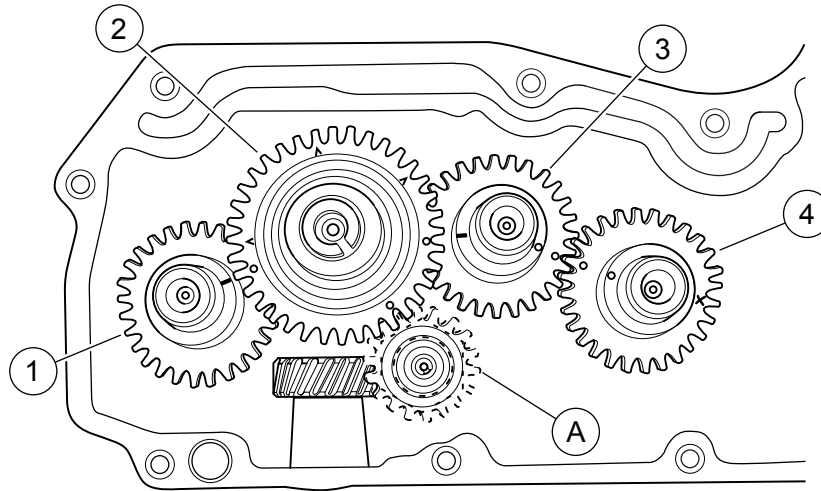
Item	Description (Quantity)	Part Number
1	Gasket, cylinder head (2)	16770-84F
2	Dowel (4)	16573-83A
3	Cylinder, std., black, non-highlighted (2)	Not Sold Separately
4	Gasket, cylinder base (2)	16789-04
5	Piston ring set, 1200 std. (2)	21925-04
6	Piston, 1200, std. (2)	22691-01A
7	Piston pin (2)	22481-04
8	Retaining ring (4)	22482-04
9	Seal, exhaust (Not Shown)	65324-83B
<b>Items mentioned in text, but not included in kit:</b>		
A	Cylinder head, front	
B	Cylinder head, rear	



**Figure 3. Service Parts: Screamin' Eagle XL 833 to 1200 Conversion Kit**

**Table 3. Service Parts: Screamin' Eagle XL 833 to 1200 Conversion Kit**

Item	Description (Quantity)	Part Number	Item	Description (Quantity)	Part Number
1	O-ring, upper push rod cover (4)	11190	5	Gasket, rocker cover, inner (2)	17695-07A
2	O-ring, tappet cover (4)	11377	6	Seal washer, tappet cover (8)	6589
3	Gasket, tappet cover (2)	17976-04	7	Gasket, rocker box (2)	16800-84A
4	Gasket, rocker cover, lower (2)	17362-07A	8	Gasket, seal breather (2)	17393-07



**Figure 4. Service Parts: Screamin' Eagle XL 833 to 1200 Conversion Kit**

**Table 4. Service Parts: Screamin' Eagle XL 833 to 1200 Conversion Kit**

Item	Description (Quantity)	Part Number
1	Rear exhaust cam gear	25198-04
2	Rear intake cam gear	25200-04
3	Front intake cam gear	25682-04
4	Front exhaust cam gear	25681-04
<b>Items mentioned in text, but not included in kit:</b>		
A	Pinion gear, for reference only	