



# INSTRUCTIONS

J06392

2017-01-16



## BAR-END GRIPS, 22 MM

### GENERAL

#### Kit Number

56100202

#### Models

For model fitment information, see the P&A Retail Catalog or the Parts and Accessories section of [www.harley-davidson.com](http://www.harley-davidson.com) (English only).

### Installation Requirements

Read and understand the complete procedure before beginning.

A solution of 70% alcohol and 30% water is needed. This solution temporarily reduces the adhesive properties of the two-sided tape.

#### ⚠ WARNING

Rider and passenger safety depend upon the correct installation of this kit. Use the appropriate service manual procedures. If the procedure is not within your capabilities or you do not have the correct tools, have a Harley-Davidson dealer perform the installation. Improper installation of this kit could result in death or serious injury. (00333b)

#### NOTE

This instruction sheet refers to service manual information. A service manual for this year/model motorcycle is required for this installation. One is available from a Harley-Davidson dealer.

### Kit Contents

See Figure 4 and Table 1.

## INSTALLATION

### Left Hand Grip

1. See Figure 1. Remove the left switch housing. See the service manual.
2. Remove the grip by carefully cutting it away from the handlebar using a sharp blade or knife.
3. Remove tape and adhesive residue from the handlebar.

#### NOTE

Thoroughly clean handlebar to remove all residual adhesive.

#### NOTE

Do not install the adhesive tape now.

#### ⚠ WARNING

Do not lubricate left handlebar grip before installation. Lubricating grip can cause it to come off while riding, which could result in loss of control and death or serious injury. (00315a)

4. To understand the correct orientation of the left side grip: Position the **new** left grip so the flat surface of tab (5) faces the rider. Fit the grooves on the outboard side of the switch housings over the flange on the end of the grip. Note the position of tab (5).
5. Test fit the grip without the adhesive tape. Remove the left side hand grip.

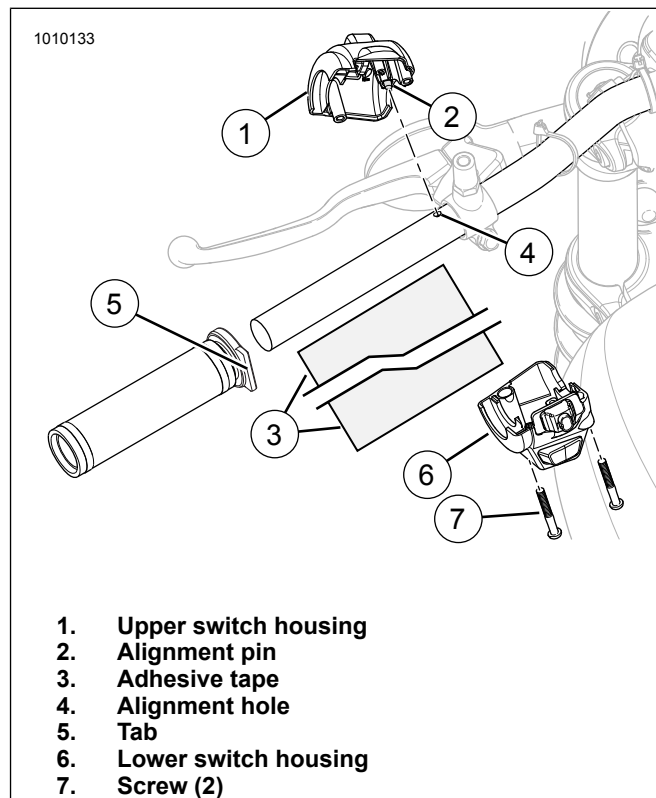
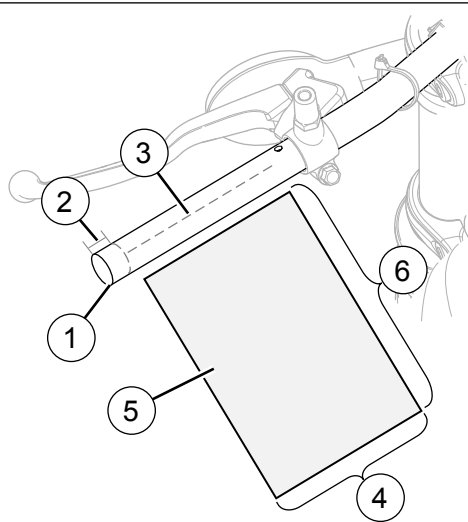


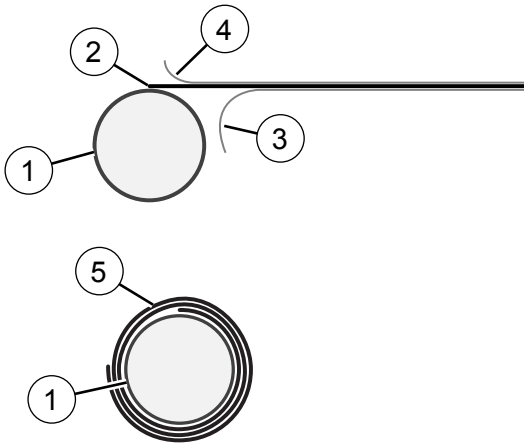
Figure 1. Left Hand Grip





1. Handle bar
2. 1/4 in measurement
3. Center line of handle bar
4. Short side, 4 in
5. Adhesive tape
6. Long side, 6 in

Figure 2. Handle Bar and Adhesive Tape



1. Handle bar
2. Adhesive tape
3. Paper backing, bottom
4. Paper backing, top
5. Adhesive tape completely wrapped

Figure 3. Handle Bar, Paper Backing and Adhesive Tape

## Adhesive Tape

1. To ease installation. See Figure 2. Make a mark 1/4 in (2) from the end of the handlebar. Keep the adhesive tape along this line while applying. To aid in alignment make a mark (3) straight along handlebar.
2. See Figure 3. Remove the paper from the bottom side (3) of the adhesive tape (2).
3. See Figure 2. Align one of the short sides (4) of the adhesive tape (5) with line (3).

4. See Figure 3. Begin to apply the adhesive tape to the handlebar. Do not wrinkle the adhesive tape. Remove the top side of the paper (4) to prevent overlapping the paper while wrapping the handlebar. Fully wrap the adhesive tape around the handlebar.

### NOTE

Once the isopropyl alcohol and water solution has been applied to the tape there is a limited time to complete the installation. Verify that the switch housing and grip are oriented correctly before proceeding.

5. Spray the tape liberally with the solution of 70% isopropyl alcohol and 30% water. The solution will temporarily reduce the adhesive property so the grip can be installed. After the solution is applied, you have about 1 minute to work before the adhesive begins to harden. Do not move the hand grip for 4 hours after installation to allow the adhesive tape to cure.
6. See Figure 1. Working quickly align the flat side of the grip (5) as noted earlier. Slide the grip onto the handlebar lifting the switch housing to find the final location. Align the pin (2) in the switch housing with the hole (4) in the handlebar.
7. Mate the lower housing to the upper housing to check for proper fit.
8. Tighten housing screws to 0.9–1.1 N·m (8–9 in-lbs).

### NOTE

Do not move the hand grip for 4 hours after installation to allow the adhesive tape to cure.

## Right Hand Grip

1. Remove the switch housing assembly. See the service manual.
2. Disconnect the throttle cables. Remove the existing right grip/throttle sleeve assembly. See the service manual.
3. Verify that the handlebar end is clean and smooth.
4. Install the new right grip/throttle sleeve to the handlebar and connect the throttle cables. See the service manual.

### ⚠ WARNING

Before starting engine, be sure throttle control will snap back to idle position when released. A throttle control that prevents engine from automatically returning to idle can lead to loss of control, which could result in death or serious injury. (00390a)

5. Verify that the right grip/throttle sleeve rotates and returns freely not binding on the handlebar or switch housing.
6. Set sleeve (3) aside for use during bar-end mirror or plug kit installation.

SERVICE PARTS

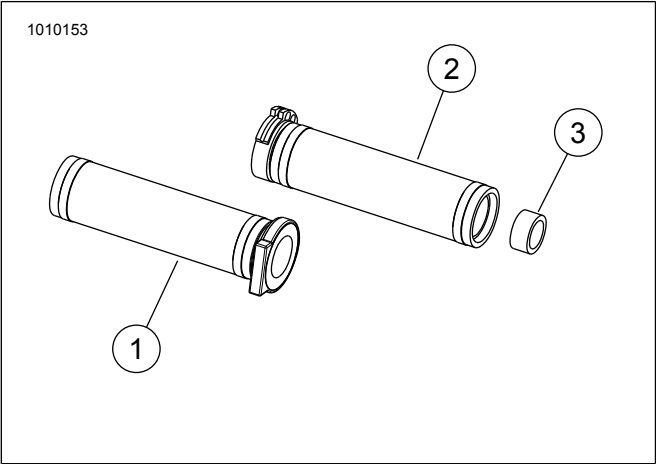


Figure 4. Left and Right Hand Grips

Table 1. Service Parts

Item	Description (Quantity)	Part Number
1	Left Hand Grip	Not sold separately
2	Right Hand Grip	Not sold separately
3	Spacer, throttle side only	Not sold separately