



INSTRUCTIONS

J06391

2017-01-16



BAR-END MIRROR KIT

GENERAL

Kit Numbers

56000133, 56000134

Models

For model fitment information, see the P&A Retail Catalog or the Parts and Accessories section of www.harley-davidson.com (English only).

Kit Contents

See Figure 2 and Table 1.

Additional Parts Required

This kit is designed for use along with a Bar-End Grips Kit (Part No. 56100199 or 56100202).

This instruction sheet references service manual information. A service manual for this year/model motorcycle is required for this installation. One is available from a Harley-Davidson dealer

INSTALLATION

⚠ WARNING

Rider and passenger safety depend upon the correct installation of this kit. Use the appropriate service manual procedures. If the procedure is not within your capabilities or you do not have the correct tools, have a Harley-Davidson dealer perform the installation. Improper installation of this kit could result in death or serious injury. (00333b)

NOTE

This kit cannot be installed on vehicles having electronic throttle control (ETC).

1. Install the appropriate Bar-End Grips Kit.

2. **NOTE**

See Figure 1. Some handlebars can be used for both cable throttle and electronic throttle control (ETC). The ETC bars can be identified by having a cutouts in the right end.

See Figure 2. Assemble components:

- a. **22 mm handlebar:** Assemble components (3). Add spacer (Part No. 12400134) from Bar-End Grip Kit (Part No. 56100202) if right end assembly.
- b. **FXDF:** Assemble components (4, 5). Add sleeve (6) if right end assembly.
- c. **1 in and 1-1/4 in handlebar without ETC cutout:** Assemble components (4, 5).

- d. **1 in and 1-1/4 in handlebar with ETC cutout:** Assemble components (4, 5). Add sleeve (7) if right end assembly.

3. Install mirror assembly into end of handlebar.

- a. Adjust mirror post to vertical.

4. Tighten screw (A).

- a. Reach through opening (B) in plug with a 4 mm hex key.

- b. **22 mm handlebar:** Tighten to:
Torque: 8.1 N·m (72 in-lbs)

- c. **1 in and 1-1/4 in handlebar with ETC cutout:** Assemble nut (8) into large clamp (4). Tighten to:
Torque: 5.4 N·m (48 in-lbs)

⚠ WARNING

Before starting engine, be sure throttle control will snap back to idle position when released. A throttle control that prevents engine from automatically returning to idle can lead to loss of control, which could result in death or serious injury. (00390a)

5. Verify that the right grip/throttle sleeve rotates and returns freely and does not bind on the handlebar or switch housing.

6. If throttle binds:

- a. Loosen switch housing screws.
- b. Slide switch housing inboard slightly to provide clearance between grip and end cap.

7. Tighten switch housing screws:

- a. Street:
Torque: 0.9–1.0 N·m (8–9 in-lbs)
- b. All but Street:
Torque: 4.0–5.1 N·m (35–45 in-lbs)



1010368

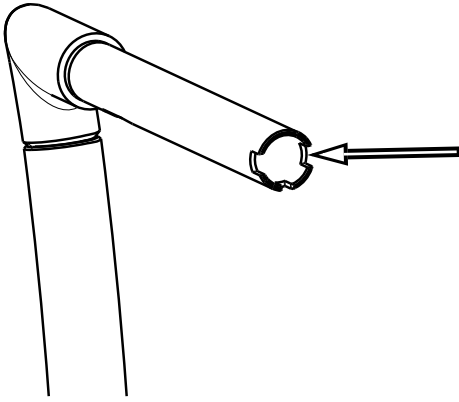


Figure 1. ETC Cutouts

SERVICE PARTS

1010379

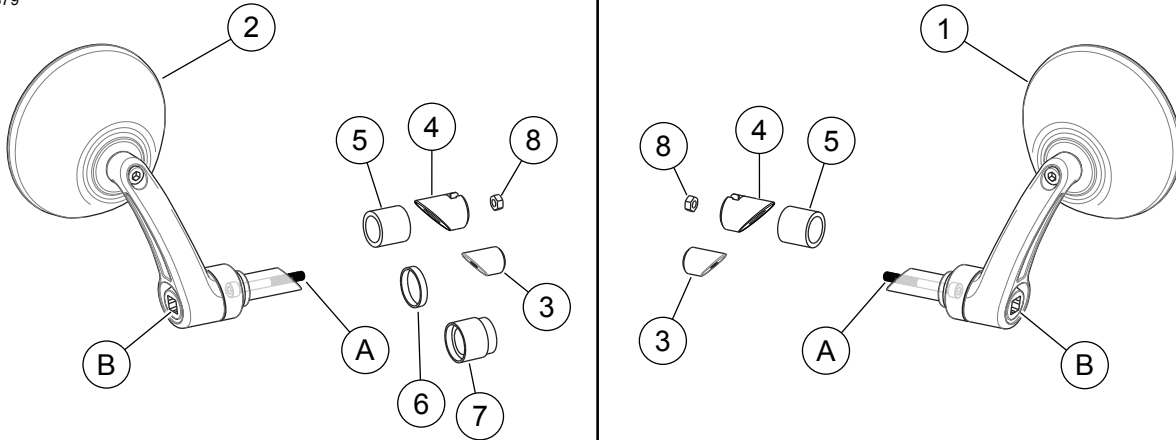


Figure 2. Service Parts: Bar-End Mirror Kits

Table 1. Service Parts Table

Item	Description (Quantity)	Part Number	
		Left Mirror Kit	Right Mirror Kit
1	Left mirror	Not Sold Separately	Not Sold Separately
2	Right mirror	Not Sold Separately	Not Sold Separately
3	Clamp, small	Not Sold Separately	Not Sold Separately
4	Clamp, large	Not sold separately	Not sold separately
5	Spacer	Not sold separately	Not sold separately
6	Spacer, small	-	Not sold separately
7	Spacer	-	Not sold separately
8	Nut, M5	Not sold separately	Not sold separately
Parts referenced in text			
A	Screw	-	-
B	Opening in plug	-	-