



# INSTRUCTIONS

J05562

2016-11-09



## AIR WING DETACHABLE UPRIGHTS

### GENERAL

#### Kit Numbers

52300146, 52300147

#### Models

For model fitment information, see the P&A retail catalog or the Parts and Accessories section of [www.harley-davidson.com](http://www.harley-davidson.com) (English only).

#### Installation Requirements

Separate purchase and installation of additional parts or accessories may be required for proper installation of this kit on your model motorcycle. See the P&A retail catalog or the Parts and Accessories section of [www.harley-davidson.com](http://www.harley-davidson.com) (English only) for a list of required parts or accessories for your model.

#### NOTE

*The Detachable Upright can be installed on either a two-point or four-point Docking Kit.*

#### ⚠ WARNING

**Rider and passenger safety depend upon the correct installation of this kit. If the procedure is not within your capabilities or you do not have the correct tools, have a Harley-Davidson dealer perform the installation. Improper installation of this kit could result in death or serious injury. (00308b)**

#### Kit Contents

See Figure 3 and Table 1.

### INSTALLATION

1. Unless already in place, install the Detachable Docking Hardware Kit (either two-point or four-point) to the vehicle per the instructions in **that** kit.
2. See Figure 3. Stand behind the motorcycle. Place the left-side and right-side front upright notches (with bushings in place) onto the docking points (A) inboard of the upper shock absorber mounts. Make sure the notch bushings (9) seat fully into the shock absorber docking points.
3. See Figure 3, arrows (D) and (E), and Figure 1. Position the rotary latches (4) over the rear docking points (3). Check to be sure the upright sides (1) and latches fit into the neck (7) of the rear docking points as shown. This may require some gentle squeezing or spreading of the upright sides.

#### NOTE

**\* If interference is encountered at the shock absorber mounts:** Remove the right side shock absorber. See the service manual. Reinstall the shock absorber in the rod down position. See Figure 3. This will allow the necessary clearance for luggage rack installation. If fitment issues continue, contact a Harley-Davidson dealer for assistance.

**\* You must hear a *CLICK* to verify that the rotary latch is completely engaged.**

**\* The docking points must be fully engaged. See Figure 1 and Figure 3 for correct engagement. If docking points are not fully engaged they could shift position or come loose during operation.**

4. Push the rear of the upright downward. Close the latches by pressing the latch lever as far forward as it will go. You hear a "CLICK" when the latch is in place. If the latch does not easily close, do not force. Check the upright alignment again, as described in steps 2 and 3.

#### NOTE

*After installing the upright, check to be sure it is secure. The front and rear docking points must be fully engaged. See Figure 1 for correct engagement.*

5. To remove the upright, press the release button (G) on each side. Pull the latch levers back. Carefully lift the rear of the upright up. Pull the upright out of the front docking points.



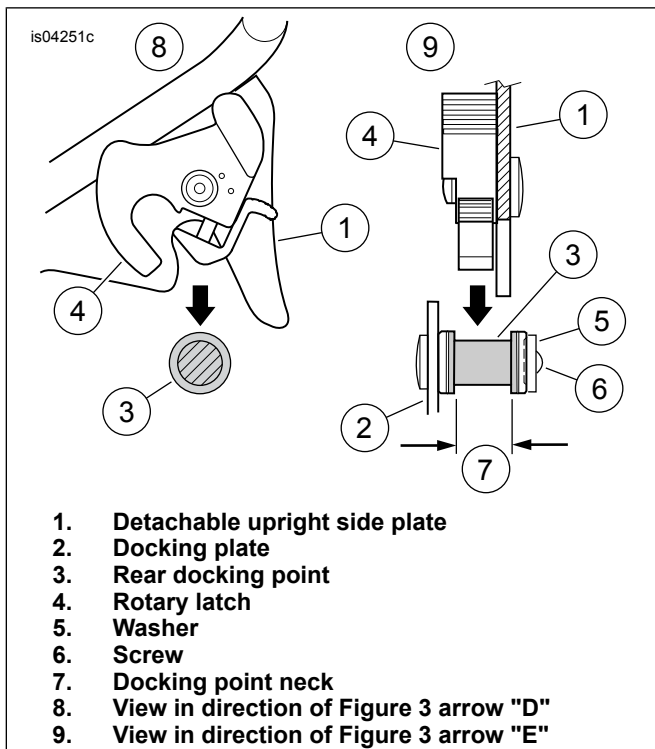


Figure 1. Proper Alignment of Latch in Rear Docking Point, Views in Direction of Figure 3 Arrows (D) and (E)

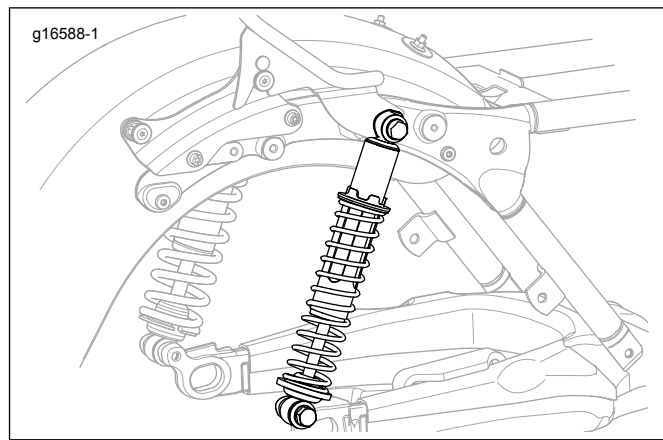


Figure 2. Shock Absorber Orientation with P&A Detachables

## SERVICE PARTS

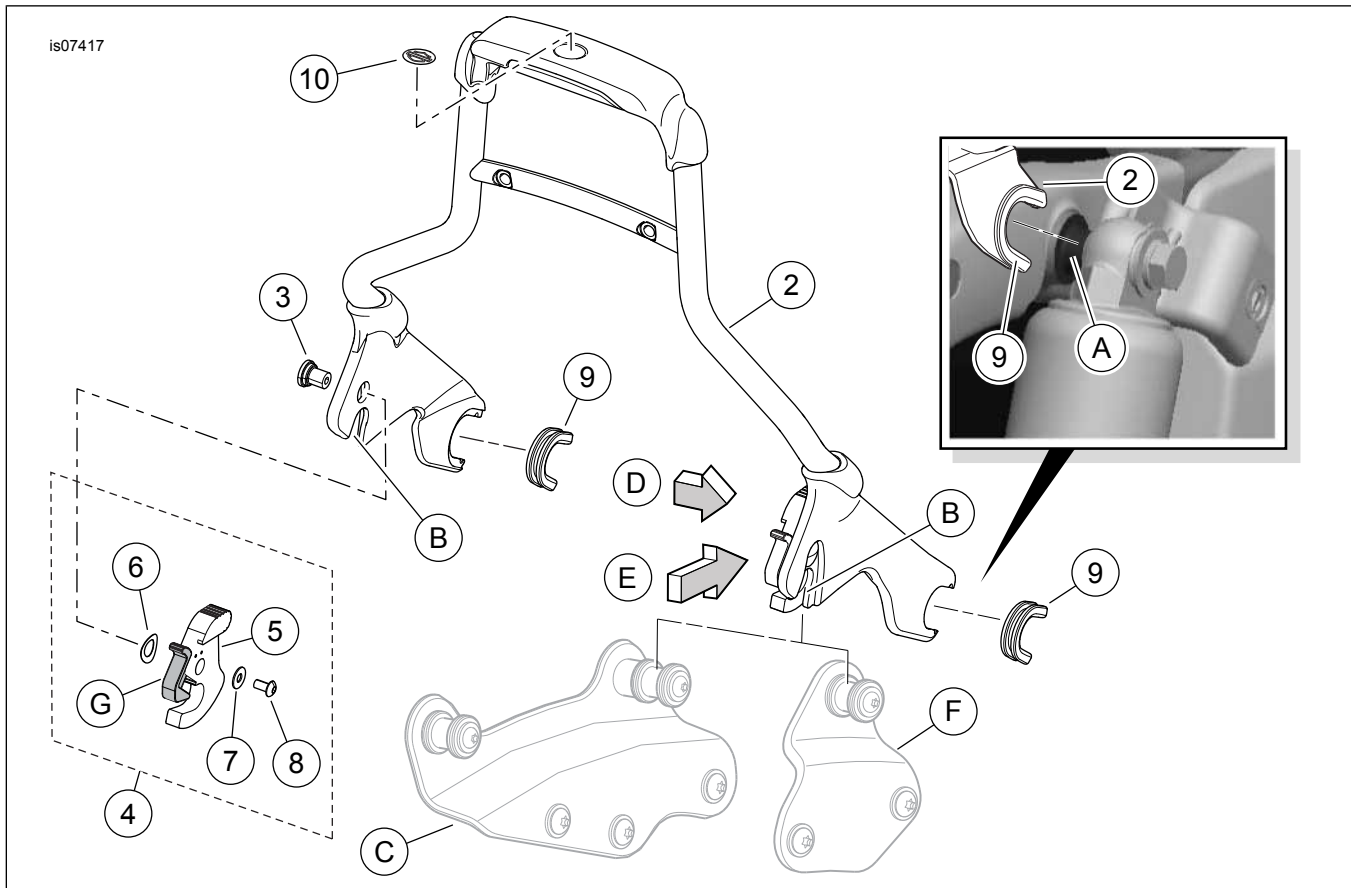


Figure 3. Service Parts, Air Wing Detachable Upright

**Table 1. Service Parts**

<b>Item</b>	<b>Description (Quantity)</b>	<b>Part Number</b>
1	Air Wing detachable upright assembly (includes items 2-10)	Not sold separately
2	___ Detachable upright weldment	Not sold separately
3	___ Pivot stud (2)	Not sold separately
4	___ Rotary latch kit, right side (not shown. Includes items 5-8)	12600021
	___ Rotary latch kit, left side (shown. Includes items 5-8)	12600022
5	___ ___ Rotary latch assembly	Not sold separately
6	___ ___ Wave washer	6828
7	___ ___ Flat washer, stainless steel	6827
8	___ ___ Screw, button head	Not sold separately
9	___ Bushing (2)	52682-09
10	___ Medallion, Bar & Shield logo (silver background, for Kit 52300146)	14448-94
	___ Medallion, Bar & Shield logo (black background, for Kit 52300147)	14750-01
<b>Items mentioned in text, but not included in kit:</b>		
A	Front docking point (2)	
B	Detachable upright rear notch (2)	
C	Four-point docking plate assembly (2)	
D	To right side of vehicle (view direction for Figure 1)	
E	To front of vehicle (view direction for Figure 1)	
F	Two-point docking plate assembly (2)	
G	Rotary latch release button (2)	